



# BSNM Newsletter

April 2023

The mission of this newsletter is to inform our members of the activities, events, and classes in the local beading community and to provide a forum where members can share beading knowledge and techniques.

## In This Issue

Message from the President  
Upcoming Events  
Raffle and Door Prize Winners  
Raffle Tickets  
April Raffle Basket  
Cherry Hills Library Exhibit  
Congratulations  
Support Our Local Businesses  
Beading Groups  
Placitas Library Call for Artists  
Gem of the Month  
New Resin Jewelry Book  
Mixed Media Beaded Mosaic Sculpture  
Top 10 Recommended Bead Embroidery Supplies  
Community Beading Project  
Bead Arts Competition  
Metal Findings  
Fiber Arts Council  
Keep in Your Thoughts  
BSNM Financials Available on Website  
2023 BSNM Calendar  
Workshops and Classes  
Art and Craft Shows  
Business Member Ads  
Procedure for Submitting for Publication  
2023 Board of Directors

This newsletter welcomes new ideas from members and solicits articles and items of interest. Any special events taking place in your life (birthdays, anniversaries, condolences needed, new job, moving, births, weddings, awards, trips, transitions, etc.)? All manuscripts are subject to editing. The editor does not assume responsibility for the accuracy of information contained in the articles received. Please send all contributions for the newsletter to the editor in care of the Bead Society of New Mexico.

## From the President

Hello Members,

Our March meeting was so interesting. Anna Holland, of Dorje Designs, gave a presentation on her vast ethnic bead collection. Her beads were collected during her world travels. Alice Helstrom was also at the meeting and talked about her collection as well. Stay tuned for information on a field trip in May to visit Anna at her studio in Tesuque. Anna would like to sell some of her collection to BSNM members. On the field trip we will also stop in at Alice Helstrom's new store in Santa Fe.

I would like to **thank the Board members, Caroline Bleil, Jeanette Easley, and Jan Kenney** for their commitment to getting the Juanita Finger donation priced and ready to sell. This has been a far more daunting task than we imagined. Hundreds of bottles of beads had to be found on an inventory list that is 22 pages long (in small type!). Because of the claimed dollar amount of the beads, the beads in the bottles often had to be counted to determine if the inventory list was correct. Some bottles were full and some had fewer than 5 beads. After that, fair market value had to be researched for each item. And then, the beads could be priced for selling. But wait! **There's more.** Because of the "claimed value" of the collection, there are tax implications for the Bead Society. After talking to an attorney that works with non-profits, we were advised on how to proceed.

All this has taken many hours to accomplish. A huge Thank You from me, to all who **helped get this done.** We couldn't have done it with your dedication.

While noodling around on the internet, I found something interesting on the Syracuse University Library website ([https://surface.syr.edu/the\\_bead\\_forum/](https://surface.syr.edu/the_bead_forum/)): **"The Bead Forum: Newsletter of the Society of Bead Researchers,"** which is the biannual newsletter of the Society of Bead Researchers. It contains short articles on various aspects of bead research, as well as Society news, reports on current research, listings of recent publications, conference and symposia announcements, and requests for information. If you would like to know more about the Society of Bead Researchers, go to <https://beadresearch.org/>.

Stay calm and keep beading,

Barbara Rosen, BSNM President, 301-351-3303,

[beadsocietynm@gmail.com](mailto:beadsocietynm@gmail.com), [www.beadsocietynm.org](http://www.beadsocietynm.org),  
[www.facebook.com/BeadSocietyNM/](https://www.facebook.com/BeadSocietyNM/)



## Upcoming Events

**April 8**

### Basic Bead Embroidery Class

**Saturday, April 8, 2023**

**1:00 pm to 4:00 pm**

**Heights Cumberland Presbyterian Church, 8600 Academy Rd. NE**

**This is a technique class.** Pam Troutman will teach you how to bead around a cab with backstitch, how to raise the bezel with peyote stitch, finish the back with Ultrasuede, choose your edge stitch, then add a beaded bail. You will finish your simple pendant project in class.

**Class fee: \$30**

**Kit fee: \$20**

Pam will have kits to choose from in class for \$20 each, but if you'd like to make your own, the supplies needed are:

- Deep domed round or oval cabochon 0.25 to 0.5 inches high and 1 to 2 inches wide glued to Stiff Stuff or stiffened felt with a half-inch edge of backing on all sides of the cab.
- Size 11, 6, and 8 seed beads (tubular shape or Delicas preferred but not required) – please bring anything except Chinese-made beads, as these are not consistent in shape or size.
- Ultrasuede backing

**Students need to bring:**

- Beading needles
- Choice of beading thread
- Scissors sharp enough to cut thread/Fireline and stiff material
- Beading mat
- Light, magnifier, or anything else you use for close beadwork

Once you learn the technique, you can use smaller beads in future projects (size 11 and 15) and bead embroider shaped cabochons with lower domes. Instructor will talk about adding picot edging, which can be done in class if students are quick, or at home depending on which finished edging style the student chooses.

Class is limited to 12 students. Sign up on the BSNM website:

[www.beadsocietynm.org](http://www.beadsocietynm.org)



**April 11**

### Board Meeting

**Tuesday, April 11, 2023 11:30 am to 1:30 pm**

The Board will meet to conduct the business of the bead society. Board members please plan to attend.

## Upcoming Events

**April 23**

### General Meeting

**Tuesday, April 23, 2023 6:00 pm to 8:00 pm  
(set-up, social time, and buying raffle tickets beginning at 5:30 pm)  
Heights Cumberland Presbyterian Church, 8600 Academy Rd. NE**

Member Helen Yackel will lead a class on how to create a simple macramé bracelet using cord (either S-Lon or waxed linen) and regular-hole beads. Bracelet will include a knotted loop and a bead or metal button for the clasp. Macramé knots will include the square knot, half-square knot, and overhand knot. If time allows a sliding knot will also be demonstrated. If other members are familiar with macramé, please feel welcome to assist others and share tips as well. This class is free to the membership.

**Items provided for the class:** waxed linen or S-Lon (your choice of color); glass beads (your choice); button clasp (metal) – if desired; glue and toothpicks; class handout

**Members need to bring:**

- Sharp scissors
- Macramé board OR clipboard with binder clips
- Beading mat (recommended)
- Beading light (optional)
- Magnifiers or magnifying eyeglasses (optional)
- If you wish to use gemstones in your bracelet (rather than glass beads), please bring fifteen 6mm or 8mm beads (not pearls).

**Also bring one piece of your best handmade jewelry (necklace, bracelet, or earrings) to the meeting.**

Members will vote on their 15 to 20 favorite items that will then be displayed at the Cherry Hills Library during the month of May.

Masks are optional. We must wipe down the tables and must be out of the room by 8:30 pm.



**June 10**

### Stacked Right-Angle Wrap Bracelet Class

**Saturday, June 10, 2023  
1:00 pm to 4:00 pm  
Heights Cumberland Presbyterian Church, 8600 Academy Rd. NE**

Julie Fear will teach you how to make a double or triple wrapped bracelet using a variation of right-angle weave. Some experience in bead weaving is helpful. **Class is limited to 12 students.**

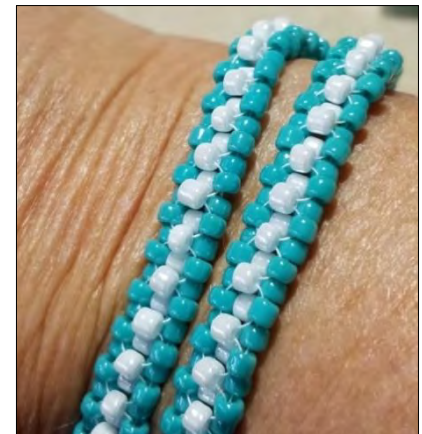
Cost: to be announced

**Students need to bring:**

- A total of approx. 20-21 grams of size 8 beads in 2 or 3 colors
- A small amount of size 11 beads (about 16 beads) to attach your clasp
- 1 clasp (I prefer a strong magnetic clasp)
- 6-lb. Fireline in smoke or crystal depending on your bead colors (or your preferred material)
- Beading needle size 11 or 12
- Bead mat
- Additional light source, if needed
- Magnifiers, if needed

Julie will have some kits available that will include enough beads for a triple wrap and clasp only. Students will have your choice of 2 or 3 colors of size 8 beads. The bracelet will have a small, very strong magnetic clasp. Students should be able to finish the bracelet in the class or be well along so finishing it at home will be easy.

Sign up on the BSNM website: [www.beadsocietynm.org](http://www.beadsocietynm.org)



## Winner, Winner

Congratulations to **Judi Burkhalter** who won the door prize at the March general meeting: her choice of a beading/jewelry book from the BSNM stash.

Congratulations to **Linda Gregory** who won the Spring Fling raffle basket at the March general meeting. Linda, who also won two of the raffle baskets at the January gala, commented on how much fun she had at the tea party and how she appreciated the work that went into developing that fun event, as well as the raffle baskets.

## Price of Raffle Tickets Reduced

Beginning at the March 2023 general meeting, the price of raffle tickets has returned to the original pricing of \$1 each or 6 tickets for \$5. More chances to win for less money!

## April Raffle Basket

Be sure to buy your raffle tickets for a chance to win the **Dream Big raffle basket**. This collection of blue beads and other items includes Czech glass beads and recycled glass and Krobo glass beads from Ghana (donated by Baskets of Africa).

## Cherry Hills Library Exhibit

**BSNM will have an exhibit at the Cherry Hills Library for the month of May in 2023. We need someone to work with the Board to coordinate and organize the items for this display.**

We will also be presenting a class on beads with a make-and-take bracelet (stretchy or memory wire). BSNM will provide kits for the class. We need someone to volunteer to present this class. Please let us know at [beadsocietynm@gmail.com](mailto:beadsocietynm@gmail.com)

**Bring one piece of your best handmade jewelry (necklace, bracelet, or earrings) to the April general meeting.** Members will vote on their 15 to 20 favorite items that will then be displayed at the Cherry Hills Library during the month of May.

(This is strictly an exhibit – no selling – similar to the displays we've had in years past in the library at the South Broadway Cultural Center.)

## Congratulations

Congratulations to Barbara Rosen who was accepted into the Corrales Bosque Gallery. Barbara uses stone and ethnic beads and pieces to create jewelry with a modern vibe.



The gallery is located at 4685 Corrales Road in Corrales, New Mexico. Hours are Tuesday thru Sunday, 10:00 am to 5:00 pm.



## Thanks!

Thank you to Barbara Rosen and Helen Yackel for going through the large bead donation from Juanita Finger and organizing the beads by type of bead (based on the inventory list). This will make the rest of the work that needs to be done on these beads easier.



## Support Our Local Businesses

**A Few of My Favorite Beads:** Call 505-974-1645 or come by to see our latest beads. We carry seed beads, crystals, and other bead items for your projects.

**Baskets of Africa:** We have an abundance of baskets to choose from. Come see our great selection of beautiful artisan-made, fair-trade baskets. Call 505-323-2315 for appointment or go to [info@basketsofafrica.com](mailto:info@basketsofafrica.com).

**Beadweaver of Santa Fe:** We are still offering a 10% discount to BSNM members.

**The Beaded Iris:** We offer 10% discount to BSNM members, as well as our punch cards for future savings. Come on into the store and rediscover all the beads, crystals, delicas, findings, thread, and other products you need to complete your beautiful project. **Open beading on Wednesdays.** Store hours are Mon. through Thurs. 10am to 5pm; Fri. through Sat. 10am to 4pm. Sun. closed. Phone: 505-299-1856; email: [beadedirisstore@aol.com](mailto:beadedirisstore@aol.com).

**Glorianna's Beads (Santa Fe):** 70 West Marcy Street, Suite B. Phone: 505-982-0353. Open Tues-Wed and Fri-Sun 10:30am to 4pm.

**Mama's Minerals:** Bead Society members get 15% off on regular-priced merchandise. You can buy beads in bulk every day for up to 25% off. We will be moving this spring to 12th Street and Menaul, right across from the Indian Pueblo Cultural Center. [www.MamasMinerals.com](http://www.MamasMinerals.com).

**Meltdown Studio:** Check out our **new and returning classes** (Fluorite Pendulum Pendant, Desert Shield Necklace, Turquoise Orbit Hoops, Paperclip Chain, Gemstone Stack Ring, Intro to Sand Casting) at <https://www.meltdownstudio.com/group-classes-1>.

**Downtown Growers Market opens April 15th.**

**New Mexico Bead Company:** New Mexico Bead Company is located at 4111 Louisiana NE, Albuquerque (north of Montgomery). 505-243-2600. Website: <https://www.nmbead.com/>. Come and see our new 8mm round stone beads and stone fetish beads.

**Santa Fe Jewelers Supply:** Open 9:00am to 5:00pm. Curbside pickup, mail order, or visit our showroom today! Order on our website at [www.sfjs.net](http://www.sfjs.net) day or night. Phone: 505-988-9157.

**Stone Mountain Bead Gallery:** We're open Mon. through Sat. from 11am to 6pm; Sun. 12:30pm to 4:30pm. Call 505-385-2200 to arrange contactless pickup. **20% off for BSNM members.** Back issues of *Bead&Button* magazine are 50% off.

**Thomason Stone Supply:** Store hours are Mon. through Sat. 9am to 5pm (winter hours). You can place an order by calling us at 888-353-9934 or 505-268-9934, or by filling out a contact form on our website, <https://www.thomasonstonesupply.com/>.

**Thunderbird Supply Company:** See our website (<https://www.thunderbirdsupply.com/>) for online and in-store specials. Store hours: Mon.-Fri. 9am-6pm; Sat. 10am-5pm.

**Treasures of the Gypsy/Gypsy Raven:** Treasures of the Gypsy Show Room is open by appointment, as well as for classes. Please contact Pamela Armas to schedule your appointment at 505-847-0963, or email her at [gypsytreasures@cs.com](mailto:gypsytreasures@cs.com)

## Beading Groups

**Laurye Tanner's house:** Beginning November 18th, **every Friday at 1:00 pm.** Bring your beads, thread, needles, beading matt, etc. – whatever you need for the project you are working on. Also bring your own beverage. 3100 Camino de la Sierra NE, Albuquerque, 87111. You **must RSVP** as there is limited space. [laurvert@yahoo.com](mailto:laurvert@yahoo.com)

**Bosque Farms:** Do you live in the Bosque Farms area? Join BSNM member Kathy Jost at the Bosque Farms Community Center for the **BFCC Bead Group on the 2nd and 4th Thursday of the month from 2:00 pm to 5:00 pm.** Bosque Farms Community Center is located at 950 N Bosque Loop in Bosque Farms, New Mexico. Phone: 505-869-5133.

**Placitas:** This beading group is taking a break for the winter months. We'll let you know when they start meeting again.

## Placitas Library Call for Artists



**Submissions accepted: March 3—April 7, 2023**

**Exhibition Dates: May 23—July 6, 2023**

While you might never do a "Thelma and Louise" but secretly envy that unrestrained streak of adventure they followed.

Do you fantasize about getting a bike and joining a club to head out on the highway in a fearless leather motorcycle jacket - decked out and ready to rumble? We all have a bit of the wild streak in us.

Let everyone have just a peek of your wild streak and exhibit something that uniquely expresses yours at the BORN TO BE WILD! exhibit.

Submission forms and detailed information can be found on the PCL website: <http://placitaslibrary.com/programs/art-exhibits/call-for-artists/artist-submission/>

Please address questions to the Art Committee at [PCL.art.committee@gmail.com](mailto:PCL.art.committee@gmail.com)

## Gem of the Month – Aquamarine

Aquamarine is the green-blue to blue variety of the mineral beryl. (Emerald is the green to bluish green variety of the same mineral.) Its color is usually a light pastel greenish blue. The best gems combine high clarity with limpid transparency and blue to slightly greenish blue hues. Heat treatment usually gives it a more bluish appearance.

The name “aquamarine” is derived from two Latin words: *aqua*, meaning “water,” and *marina*, meaning “of the sea.”

Aquamarine can mostly be found in granite pegmatites (igneous rocks). It can also be found in veins of metamorphic rocks that became mineralized by hydrothermal activity.



Aquamarine on muscovite from the Nagar Hunza Valley in Pakistan

Aquamarine has a chemical composition of  $\text{Be}_3\text{Al}_2\text{Si}_6\text{O}_{18}$ . This mineral has a hardness of 7.5 to 8. Aquamarine contains no or few noticeable inclusions but it can have inclusions such as mica, hematite, or saltwater. Some stones contain “snow-stars,” irregularly shaped liquid droplets in a star formation.

Aquamarine crystals are part of the hexagonal system, forming large, bladed crystals with vertical striations and the tendency to break along that vertical plane. Like many beryls, these large crystals are suitable for sizable fashioned gems and carvings. The largest gem-quality aquamarine crystal mined to date is 19 inches long and weighs 110 kilos (242.5 pounds).

This beautiful gem receives its coloring from trace amounts of ferrous iron. Its hues range can range from blueish green, blue-green, greenish blue, to deep blue, and its tones can vary from very light to moderately dark. You'll rarely see aquamarines darker than a Swiss blue topaz. When you do, the color is usually enhanced by the cut.

Blue-green is the color most commonly associated with aquamarine, but crystals are found without the greenish component. **In fact, they're found often enough that, through time, they've set the bar for the finest color of aquamarine.** The remarkable Midnight Blue Aquamarine sold by designer Graziela, found in a single small source in Brazil, is a case in point.

In the 1970s, Maxixe (pronounced mah-SHE-she), a very dark blue aquamarine, appeared on the market, but the color of this irradiated product wasn't stable.

Consequently, these stones have mostly disappeared from the market.

There are plenty of lovers of the blue-green aquamarine color who would disagree that a truer blue is a better blue. But it did mean that, sooner or later, someone **was going to try to “improve” the color of greenish stones.** Today, many aquamarines have been heat treated to reduce/remove the greenish tint and feed the **demand for “the best” aquamarine.** The color is **stable and doesn't affect durability, so if you love less-green aquamarine, you can buy these stones with confidence.**



A 33.58-carat cushion-cut aquamarine with a slightly greenish cast to the gem.

(Photo: Mia Dixon, courtesy of Pala International)

Because a green-less blue aquamarine has been considered the ideal, imitation aquamarines—like those often seen in inexpensive birthstone rings—are usually **created in that “true blue” color.** Today those imitations are often cubic zirconia. At one time, they were synthetic spinel.

Aquamarine is relatively inexpensive due to its abundance. The value of aquamarine is determined by its weight, color, cut, or clarity. Cut aquamarines that are over 25 carats will have a lower price per carat than smaller ones of the same quality. Natural truly blue aquamarine is very expensive.

When cutting aquamarine, the primary consideration should be depth of color. Deep designs, like Barions and emerald cuts, are usually preferred. Stones faceted with low crown angles will produce higher brilliance, but higher crowns are often used to deepen the color.



Faceted aquamarine from Brazil

In the language of gemstones, aquamarine represents happiness, hope, and everlasting youth. Ancient Romans believed that aquamarine could protect people who are travelling across the sea. It was believed to make sailors fearless and safe from adversaries on the open waters.

It has been said that the mineral beryl gives the wearer protection against foes in battle or litigation. It makes the wearer unconquerable and amiable, and also quickens the intellect. Aquamarine is also thought to enhance the happiness of marriages.

Aquamarine helps to gain insight, truth, and wisdom. It can be used to help calm the mind, nerves, and anxieties. Physically, it's said to help relieve the symptoms of fluid retention. Because it's associated with water and water is cleansing, aquamarine can also help aid in the flushing of toxins from the body.

Place raw aquamarine stones over the breastbone or at the throat to facilitate these chakras and enhance communication.

Aquamarine is a birthstone for March and the zodiac signs of Taurus (April 20 to May 20), Scorpio (October 23 to November 21), and Aquarius (January 20 to February 18). It is also the state gem of Colorado.

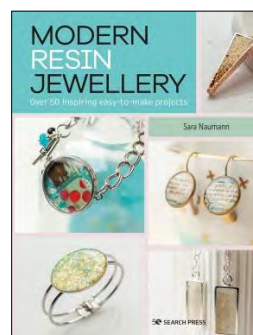
Aquamarine can be found Afghanistan, Australia, Brazil, China, India, Kenya, Madagascar, Malawi, Mozambique, Myanmar, Namibia, Nigeria, Pakistan, Russia, Sri Lanka, Tanzania, United States, Zambia, and Zimbabwe. Brazil and Pakistan are the leading producers of aquamarine. This mineral is mined at high elevations in Pakistan's Karakoram Mountains.



## New Resin Jewelry Book

### *Modern Resin Jewellery: Over 50 Inspiring Easy-to-Make Projects*

by Sara Naumann



Using a small number of tools and materials, learn how to make beautiful, unique resin jewelry that is both stylish and timeless. Be impressed by the ease and versatility of resin jewelry making. Well-known crafter Sara Naumann provides over 50 projects that are modern and straightforward to replicate. She:

- Demonstrates how simple and quick resin jewelry is to make, using minimal equipment and readily available products.
- Guides you through the resin process which involves mixing and measuring chemicals.
- Relevant safety information is included, along with a troubleshooting section.

The technique is very easy: simply mix the two-part resin together and pour into a mold, bezel, or pendant. Sara uses pre-made, inexpensive molds in a variety of shapes and sizes. Rings, pendants, brooches, cufflinks, hairpins, and bracelets are all achievable and look store-bought.

You can add numerous items to the resin to create different effects. Paper or foil inserts can provide a background for the bezel (for example, old maps or photographs). Paper can be sprayed or stenciled before being coated with resin. You can also immerse various items in the resin before it cures, such as dried flowers, feathers, shells, and beads, or use glitter, colored inks, or nail polish to personalize.

Sara Naumann has been teaching, designing, and developing products, ideas, and projects in the craft industry for over 20 years. She is the author of two books (*How to Make Resin Jewellery*, 2017 and *20 to Make: Washi Tape Cards*, 2015). She has guested programs on Create and Craft television, as well as QVC and Scrapbook Soup (in the US). Sara has been a monthly columnist for *Crafts Beautiful* magazine for nearly a decade. Teaching and inspiring crafters of all experience levels is her passion.

This 8.13-inch by 0.24-inch by 10.25-inch paperback book was published by Search Press in March 2023. It has 96 pages. The list price is \$19.95 (\$16.99 on Amazon).

## Mixed Media Beaded Mosaic Sculpture with Melanie Christie

Katie Hacker, March 17, 2023,

[https://www.interweave.com/article/beading/mixed-media-beaded-sculpture-melanie-christie/?utm\\_campaign=IW+Beading+-+Newsletter&utm\\_id=Newsletter\\_20230327\\_GPM230324028&utm\\_medium=email&utm\\_source=omeda&oly\\_enc\\_id=7354A2943523A3R](https://www.interweave.com/article/beading/mixed-media-beaded-sculpture-melanie-christie/?utm_campaign=IW+Beading+-+Newsletter&utm_id=Newsletter_20230327_GPM230324028&utm_medium=email&utm_source=omeda&oly_enc_id=7354A2943523A3R)



*Rhino* beaded sculpture (photo courtesy of Melanie Christie)

Melanie Christie creates mosaic sculptures using **beads, stained glass, and found objects**. Her painter's eye looks at unadorned surfaces and sees a world of colorful possibilities. Melanie won Grand Prize in the 2022 Bead Arts Awards with one of her beaded mosaic sculptures, *Rhino*, which wowed the judges with its meticulous craftsmanship and creativity.



Melanie Christie with her Bead Arts Awards Grand Prize-Winning bead sculpture, *Rhino*  
(Photo by Jeffrey Litvack)

## Melanie's Process

**Q:** How do you build your beaded mosaic sculptures?

**MC:** I scour places like discount home décor stores, thrift shops, garage sales, and antique stores for unique shapes, and I also sculpt substrates when I have something specific in mind. I use Apoxie Sculpt to change the shape of the substrate, if I need to, but also as a layer of adherent for the beads. I also use a layer of glue on top of the Apoxie Sculpt and I seal the **beads with clear acrylic urethane when I'm finished**. This way I am sure that no beads will pop off. Choosing the beads is an ongoing process—and I have a lot to choose from.

**Q:** Can you describe your process for creating your winning *Rhino*?

**MC:** I happened to come across a pair of rhino bookends at HomeGoods and I knew immediately that they needed to be beaded (yes, I have another one that will be beaded soon). I began by cutting out the eye sockets to make room for two beautiful vintage German blown-glass eyeballs in my collection.

**Q:** What made you choose *Rhino* for entry in the competition?

**MC:** I chose this piece because it's special. Ever since I placed the eyes and decided to use horsehair on the eyelashes and ears, the piece has had real presence. Also, I thought that if I had to ship the piece for a show – that this one would ship easily. Some of my other pieces, like *Ketch* (my pelican) are quite large.



Herbert "Ketch" Pollack the pelican  
(Photo courtesy of Melanie Christie)





*Covid Preserves* is a clever twist on hoarding supplies.  
(Photo courtesy of Melanie Christie)



*Old Green Grasshopper*, winner of The Judges Choice Award in the Museum of Beadwork's inaugural Wings and Stings exhibit (Courtesy of Melanie Christie)

## A Career in Bead Arts

**Q:** How did you begin doing this type of bead art and what do you love about it?

**MC:** A few years ago, I began making mosaics, taking a turn from painting which I have done most of my life. I was using mostly stained glass and I kept wanting to use smaller pieces to create finer details. Then I realized the solution was beads, so I started dipping into my bead collection. I have been beading since high school when I began making and selling beaded earrings. Throughout my life I have collected beads and made jewelry for myself and to give as gifts. But when I realized that I could use beads as my medium to create color and texture in mosaics and on sculptural pieces, my bead collection exploded.

**Q:** Is creating bead mosaics a full-time job or a side project?

**MC:** Yes, this is my day job. Previously, I had run the art program at my local K-8 school. I love working with kids and making sure they have art as a part of their curriculum is very important to me. Now I spend most of my time in my home studio creating new work when I'm not traveling with my husband.

## Advice for Entering Competition

**Q:** What advice would you share with people who are considering entering a beading competition?

**MC:** Go for it! In fact, I thought about NOT entering this competition because I thought it was more geared toward jewelry. But there was one sentence in the prospectus that said something about bead sculptures being welcomed. So, when I was discussing this competition with my friend, she urged me to enter, saying that she was sure that the people from Fire Mountain Gems, Interweave, and the beading community would love to see how I am using beads. However, one does have to be ready for rejection and not take it personally. **Usually a "no" means that your work doesn't fit with what the jurors have in mind for the show, not that your work doesn't stack up.** So be brave.

## Find Melanie Online

Melanie now focuses on making art full time in her home studio in San Jose. See more of her work and shop at [melaniechristie.com](http://melaniechristie.com) and her Etsy shop, [Flying Glass Art](#).

**Pay attention to detail.**

– Anna Holland

## Top 10 Bead Embroidery Supplies Recommended by Melissa Grakowsky Shippee

Interweave Editorial Team, March 21, 2023,

[https://www.interweave.com/article/beading/top-bead-embroidery-supplies-recommended-melissa-grakowsky-shippee/?utm\\_campaign=IW+Beading+-+Newsletter&utm\\_id=Newsletter\\_20230324\\_GPM230323015&utm\\_medium=email&utm\\_source=omeda&oly\\_enc\\_id=7354A2943523A3R](https://www.interweave.com/article/beading/top-bead-embroidery-supplies-recommended-melissa-grakowsky-shippee/?utm_campaign=IW+Beading+-+Newsletter&utm_id=Newsletter_20230324_GPM230323015&utm_medium=email&utm_source=omeda&oly_enc_id=7354A2943523A3R)

Bead embroidery is one of the most popular beading techniques—and Melissa Grakowsky Shippee is a queen of the technique. She is known for her intricate, ethereal beadwork. It is easy to get started with bead embroidery and you will soon see why it is so satisfying. Bead embroidery is a beautiful way to create beaded jewelry, embellish clothing and accessories, and express your style.

You can start with a beading needle, thread, seed beads, and something to stitch onto, but there are some supplies that will make bead embroidery easier, more durable, and especially elegant. We asked Melissa to share her essential supplies for bead embroidery.

### Beads and Crystals

**1. Czech glass cabochons** make beautiful focal points for bead embroidery. Melissa recommends placing large elements first, then filling the spaces with smaller beads.



**2. Fire-polished beads** are traditionally made in the Czech Republic and provide a lot of sparkle at a lower cost than machine-cut crystals. These faceted beads are known for their consistency and luster.



**3. Swarovski and other crystals in settings**—or with metal settings that fit them—can be stitched between beads to create sparkly elements in bead embroidery.



**4. Size 10/0 cylindrical beads** are ideal for creating smooth lines and beaded bezels in bead embroidery. Delicas are famous for their uniformity and wide range of colors.

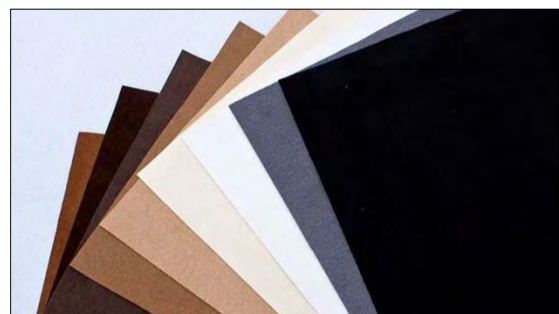


**5. Size 11/0 and 15/0 seed beads** are essential for bead embroidery. Combining varying sizes of seed beads creates dimension and texture in your beadwork.



### Backings for Bead Embroidery

**6. Ultrasuede** is a synthetic microfiber that is soft, durable, and perfect for bead embroidery. It is available in a wide variety of colors so you can match the backing to your beadwork.



**7. Cork** makes a smooth, pliable backing for bead embroidery, or you can stitch onto it. Some cork fabric (or leather) is backed with cotton or other woven fabric.



**8. Pelon Peltex sewing interfacing** is easy to cut and stitch onto. You can print or draw a pattern onto Peltex and then stitch onto it.



## Thread and Needles

**9. Hana beading thread** is no-ply, strong, and perfect for bead weaving. Hana has been discontinued by the manufacturer, so stock up when you find it. Toho One G beading thread is a good alternative.



**10. Tulip size 10 needles** are Melissa's top choice for bead embroidery. The eye is easy to thread and the rounded tip makes it easy to thread seed beads.

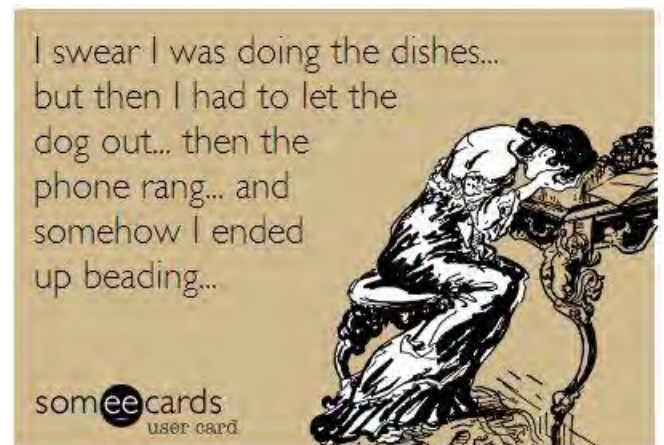


**Melissa Grakowsky Shippee** is known for her elaborate masks and intricate yet ethereal beadwork. An award-winning designer, Melissa has written books, taught internationally, and was a [2017 Beadwork Designer of the Year](#). Melissa draws in beadwork with her methodical approach to artistic designs. She also takes a creative approach to beadwork, using unusual elements to make masks and other accessories in addition to making jewelry. Find Melissa online at [MSGbeads.com](http://MSGbeads.com).

## Lampwork Glass Beads

If you're interested in making, or just admiring, lampwork glass beads, the following books will be of interest:

- *1000 Glass Beads: Innovation & Imagination in Contemporary Glass Beadmaking* by Valerie Arsdale Shrader
- *The Art & Soul of Glass Beads: 14 Bead Artists Share Their Inspiration & Methods* by Susan Ray and Richard Pearce
- *Beads of Glass* by Cindy Jenkins
- *Making Glass Beads* by Cindy Jenkins
- *Passing the Flame - A Beadmaker's Guide to Detail and Design* by Corina Tettinger
- *Contemporary Lampworking: A Practical Guide to Shaping Glass in the Flame* (2 vol. set) by Bandhu Scott Dunham
- *Glass Notes: A Reference for the Glass Artist* by Henry Halem
- *A Glassblower's Companion: A Compilation of Studio Equipment Designs, Essays, & Glassblowing Ideas* by Dudley F. Giverson, Fritz Dreisbach, and Linda Burdick
- *Lampwork Beads: The Book* by Alice Foster Zimmerman (out of print)



## Community Beading Project

### Join the Museum of Beadwork's annual Collaborative Community Project!

How it works: Each year we ask artists to contribute a beaded item of a specific theme. We install these collected items in an exhibition highlighting the power of people coming together for the purpose of community and creation. The exhibition is then on display for roughly a year. Once finished the individual items are used in fundraising efforts for the Museum support the staff, development, and programs of this community-based institution.



The theme for this year is **"Grandifolia"** and we would like you to make and send us a beaded leaf that will be part on an installation exhibit in our gallery. We will be creating branches that all the leaves will be wired/attached to and then use those to form a canopy or tree. Help us create a canopy of leaves for all visitors to gather under!

We invite you, no matter your experience, style, or technique, to make a leaf and send it to us.

### Guidelines:

- Leaves can be anywhere between 2 inches in any direction to 12 inches in any direction.
- As the leaves will be wired to branches in all directions, 3-dimensional is best, but we are not discouraging 2-dimensional as long as they do not fold under their own weight.
- Use of an armature, framework, or solid structure to bead upon is acceptable.
- **Each leaf needs to have a sturdy "stem"** (for example, wire) protruding beyond the beadwork. This is how we will attach them to the branches we are creating for the installation.
- Found materials are acceptable but we ask that the leaves are at least 70% beads.
- No color requirements.
- Single leaves, clusters, or even vines are great. Leaves based on trees, shrubs, annuals/perennials, or the imagination are perfect.

- Original designs only. Due to copyrights that some patterns have, we must require that designs are created by you or that you have express permission to use them for this project.
- Feel free to send us as many leaves as you like. In fact, the more the better!

**Please mail your leaves to us no later than May 30, 2023.** When mailing, please include:

- Your leaves.
- Your name, town/state/country, and age (if you wish to share)
- Whether or not you would like to be listed as a contributing artist.

Mail to:

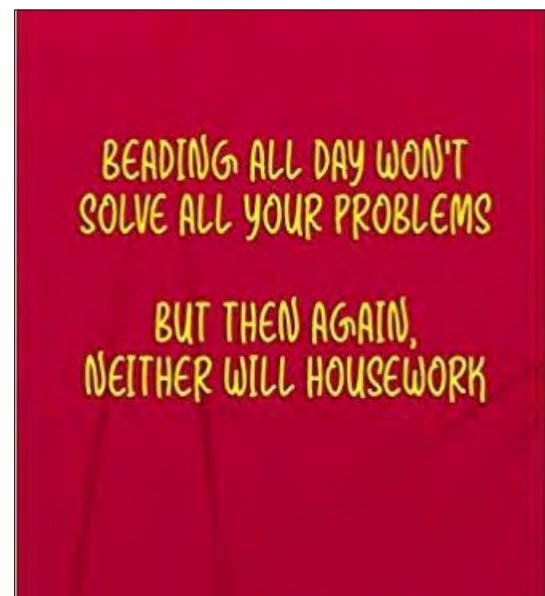
Museum of Beadwork  
915 Forest Avenue  
Portland, Maine 04103

The final installation will largely depend on how many individual leaves we receive.

### Fine Print – Please Read!

Upon receiving, the leaves become the property of the Museum of Beadwork. They are intended to be on display at the Museum of Beadwork as an installation for roughly a year before becoming part of an annual fundraising effort for the Museum. Individual leaves will not be returned.

All submissions to this project become the full property of the Museum of Beadwork and can be used by that institution in any lawful way including (but not limited to) publicity, marketing, exhibitions, sale, etc., in perpetuity. All proceeds resulting from this project will go to support the Museum of Beadwork and its mission.



## Bead Arts Competition

<https://www.interweave.com/bead-arts/>



Artists of all levels are welcome to enter the Bead Arts Awards competition for the chance to gain recognition for their accomplishments and to show off their best beadwork. While we love dramatic beadwork, we're also looking for bead contest entries with interesting stories, careful craftsmanship, or new twists on a technique. Show us what you can do!

Whether you begin with a sketch or simply start stitching, use this beading contest as inspiration for your next beaded jewelry design. Look at your stash with fresh eyes, revisit one of your favorite techniques, or enter a favorite beaded jewelry design that's already in progress—or finished. We want to see your most creative and very best work using techniques and materials that inspire you.

Beyond the inspiration that comes from entering a beading contest, the prizes and recognition are motivating, too! All winners of the Bead Arts Awards will be announced and featured at Bead Fest in Lancaster, PA. These awards highlight the best of the best, with an overall \$750 cash prize for the Grand Prize Winner and a \$250 cash prize to Category Winners.

*"Most importantly, enjoy the process as that will shine through—no matter what you create."*

Interweave Director of Content Tamara Honaman

### Categories

**Bead Embroidery:** Bead embroidery is one of the most popular beading techniques—and it can be interpreted in so many ways! Whether you create a wearable design or an elaborate home accessory, we can't wait to see your inspired bead embroidery beadwork.

**Beaded Sculpture:** Beaded sculpture is one of our most popular categories, year after year. We're continually inspired by the way beaded-sculpture artists create figurines, home décor, and other three-dimensional objects. Show us your off-loom beadweaving or meticulous gluing techniques

**Bead Looming:** Bead looming is a traditional form of beading that has evolved over the years to allow for

many variations. Use your favorite beading loom to create a sensational wearable or non-wearable work of art. We love looming because it's limitless!

### Prizes & Awards

**Grand Prize Winner:** \$750 in cash, plus featured artist profile on Interweave.com. Work will be featured at Bead Fest Lancaster, PA.

#### Three Category Winners:

\$250 Sponsored Prize. Work will be featured at Bead Fest Lancaster, PA.

**Four Honorable Mentions:** \$50 Interweave.com Gift Cards. Work will be featured at Bead Fest Lancaster, PA.

All winners will receive a one-year membership to Interweave Plus (a \$49.99 value), a feature on Interweave.com, and a digital badge to use on your platforms.

### Entry Period

Entries in the Bead Arts Awards (the "Contest") must be submitted between 12:01 a.m. ET on March 8, 2023, and 11:59 p.m. ET on June 16, 2023. The Super Early Bird deadline for taking advantage of the lowest priced entry fees is 11:59 p.m. ET on March 31, 2023. The Early Bird deadline for taking advantage of reduced entry fees is 11:59 p.m. ET on May 9, 2023.

### Eligibility

Entrants must be at least 18 years of age or older and of the age of majority in their jurisdiction of residence. Employees of Golden Peak Media ("Sponsor"), their parents, subsidiaries, affiliates, and divisions (the "Promotion Entities"), their immediate families (parent, child, sibling, spouse), and persons living in the same households of such individuals (whether related or not) are not eligible to participate in the Contest.

### How to Enter

Enter as often as you like. Entries must be submitted as JPG digital files online at <https://goldenpeakmedia.submittable.com/submit> during the Entry Period. Files under 5MB are more likely to upload properly. Entrants should be prepared to send a hi-resolution, print-quality replacement file should their entry be selected as a Winner; detailed requirements will be provided at that time. Entry fees are due with entries. Your record of the credit card or PayPal charge will be your receipt.

#### Fees are as follows:

- Super Early Bird Deadline – Entry Fee: \$15 Interweave+ members; \$25 non-members
- Early Bird Deadline – Entry Fee: \$25 Interweave+ members; \$35 non-members
- Extended Deadline – Entry Fee: \$35 Interweave+ members; \$45 non-members

### Additional Requirements for Entries

The Contest is open to all artists working in Bead Embroidery, Beaded Sculpture, or Bead Looming. Each entry must represent one piece of jewelry or one gem or one multiple-piece set or suite. You may

submit as many entries as you wish, but each piece, set, or suite must be submitted as a separate entry. All works must be original. **"Original" means that the work must be from the hand of a principle artist;** pieces that originate from a workshop or a class under the direction of a teacher are not eligible. Entries must be submitted by the designer/maker or lapidary, or in cases of collaborative work, the principal designer/maker or lapidary. By entering, you represent and warrant that your entry is your original work, that your entry does not infringe the rights of any third party, and that you have all the rights necessary to submit the entry and to assign the rights in the entry. Works deemed unsuitable for publication or that do not meet above criteria, in the sole discretion of Sponsor, are not eligible. Works previously published at the time of submission to this contest in a national publication or receiving an award at a national-level exhibition are not eligible.

## Judging and Notification

There will be a total of eight (8) winners. Limit one (1) prize per entrant. All eligible entries will be judged in two rounds using the following criteria:

- Artistic technique
- Handling of medium
- Design and creative elements
- Overall impression/impact

Judging will be blind; no information regarding the entrants will be shared with judge until all scoring has been made final. In the event of a tie, the entry with the highest score in overall impression/impact will be deemed the Winner. If there is still a tie, the judge will select the entry deemed to be the better entry overall.

Judging will take place in two rounds. The first round judges will select a set number of entries per category as finalists to move to the second round. The second round judges will confer and select the winners. Second Round jurying will be done by a member of the Interweave Editorial team. Sponsor reserves the right, in its sole discretion, to disqualify any entries it deems to be inappropriate for publication or display. Sponsor also reserves the right, in its sole discretion, to disqualify entries that are entered into the wrong category as deemed by the judges. Refunds or rebates will not be offered to entrants whose entries have been disqualified for any reason.

Potential winners will be notified no later than August 1, 2023, by email. Each potential winner will be required to complete and return an Affidavit of Eligibility and Compliance with Official Rules, a Publicity Release, and a Release of Liability within ten (10) days of notification. If a potential winner does not respond to notification or does not return the forms in the required time, the prize will go to the person with the next highest score.

Please keep in mind that winning items may need to be shipped to Colorado for photography in July 2023 or transported to Pennsylvania for display in August 2023.

## General Conditions

Void where prohibited. Any entrant suspected of tampering with or disrupting any aspect of the Contest will be disqualified. All decisions of Sponsor are final. By your participation in the Contest, you (i) agree to be bound by these Official Rules, (ii) agree to release, indemnify, and hold Sponsor, their affiliates, parents, subsidiaries, and divisions, and all of their officers, directors, employees, and agents harmless from any and all claims, liabilities, losses, and damages of any kind arising in whole or in part, directly or indirectly, **from your participation in the Contest, from Sponsor's use of your entry, or from your acceptance, possession, use, or misuse of any Prize, and (iii) agree that any dispute or claim will be resolved individually and without resort to class action.**

**For the complete contest rules and guidelines, go to <https://www.interweave.com/bead-arts-awards-rules-and-guidelines/>**

## Metal Findings

reprinted from *Bead Style* magazine, March 2006

**Base-metal** findings are typically a silver- or gold-colored nickel alloy and are less expensive than other metal findings. One common metal allergy is a sensitivity to nickel. If your ears swell or become itchy, avoid nickel.

**Gold-plated** metal has a very thin layer of gold on the surface of a base metal. Most commonly, a 10-karat (10K) layer is applied by the process of electroplating. Gold plate is a thinner layer of gold than the amount in a gold-filled finding.

**Surgical-grade stainless steel** findings are often referred to as "hypoallergenic," but do not equate hypoallergenic with nickel-free. Surgical stainless steel contains a small amount of nickel (usually 8 percent in jewelry). If you are slightly sensitive to nickel, you can probably wear surgical stainless steel for a few hours.

**Niobium and titanium** can be anodized (coated with oxide) to create colors. Most metal-sensitive people can comfortably wear these lightweight, hypoallergenic metals. Both are soft, and given time, the color will erode to a natural dark grey.

**Sterling silver** is a combination of pure silver and copper or other alloy. Many nickel-sensitive people can wear sterling silver without experiencing a reaction. In time, sterling silver will take on an antique patina.

**Gold-filled wire** will last a long time without showing wear. A tube of gold is formed and filled with a base metal, usually jeweler's brass. The purity or fineness of gold is indicated by its karat number. If you are hypersensitive to nickel alloys, wear 14k (or higher) gold. Fine gold, or 24k gold, is the purest gold for jewelry and is greater than 99.7 percent pure gold.

## Rio Rancho Bead Estate

Jerome Nunez, of A Few of My Favorite Beads, knows of a bead estate in Rio Rancho with beads for sale at a discount. There are some stipulations to buying:

- You must call Jerome and make an appointment to go to the bead estate (it is not at his shop)
- The bead estate is only available on Tuesdays
- Limit of 3 people at a time
- Jerome will drive you to the bead estate

To make an appointment or if you have any questions, call 505-974-1645.

## Studio Space Available

Business partners Sally Jewell and Sally Williams have opened a 1,700-square-foot studio in the Hoffmantown Shopping Center at Menaul and Wyoming for all fiber arts crafts. They offer guilds, groups, or individuals a meeting space, a gathering work space, or an opportunity to use the space to teach classes.

The partners are both mothers and work full time, so the space is currently open Fridays and Saturdays, but will open and host any group when requested.

The Sewing Place Abq  
8252 Menaul Blvd. NE, Albuquerque, NM 87110  
[thesewingplaceabq@gmail.com](mailto:thesewingplaceabq@gmail.com), 505-705-2952  
[www.thesewingplaceabq.com](http://www.thesewingplaceabq.com)

## Fiber Arts Council

The Albuquerque Fiber Arts Council is looking for candidates who are interested in promoting fiber arts in New Mexico to fill board positions. If interested, please go to <https://abqfiberartscouncil.org/fiber-arts-council/> to fill out an application. (This is different than being BSNM's representative to the Council.)

The Albuquerque Fiber Arts Council was formed in 1997 to provide the opportunity for local fiber guild members to show their work to the public. It has grown from six guilds then to almost twenty. The Board of Directors has seven members who are dedicated to continuing the tradition of hosting the Albuquerque Fiber Arts Fiesta every other year. As a 501(c)3 organization, the proceeds from the Fiesta provide funding for other public shows and scholarships.

The Council is also seeking individuals interested in working on the marketing committee. If you would like to be involved and work with a great team promoting Fiber art, please email [michellejackson@quiltfashions.com](mailto:michellejackson@quiltfashions.com)

## Bead Store for Sale

After 30 years in retail and 50 years in jewelry, imports, and wholesale, **Robert Steinberg, owner of Stone Mountain Bead Gallery (voted Albuquerque's Best Bead Store), is selling off his huge accumulation beads, jewelry, and world handicrafts.**

Included are thousands of strands of vintage Czech beads; African trade beads; gemstone and mineral beads; Native American turquoise and heishi; and more. Also loads of silver and gemstone jewelry; Bali silver beads; wood, ceramic, glass, brass, and stone beads; Swarovski crystals; costume jewelry; seed beads by the pound; and handicrafts, art, and jewelry from Nepal, India, Tibet, Thailand, Bali, and Turkey. Collectables and statues – oriental, Native American, dragons, skulls, Buddhas, malas, and rosaries.

Quantity discounts!

Also, building for sale: retail space on Route 66/ Central Ave. in popular Nob Hill neighborhood. 5,000 square feet currently divided into two stores. Signage and huge parking lot.

Contact: Robert Steinberg  
Stone Mountain Bead Gallery  
4008 Central Ave. SE, Albuquerque, NM 87108  
Phone: 505-260-1121  
Email: [rsteinberg50@comcast.net](mailto:rsteinberg50@comcast.net)

## Fundraiser for Barbara Butcher

Barbara Butcher, who has been battling cancer, had a stroke earlier this year that left her with limited use of her right arm and leg. Consequently, she will probably need 24-hour assistance going forward.

To help combat this expense, Jerome Nunez of A Few of My Favorite Beads has volunteered to sell the leftover stock from Barbara's former store, The Beading Heart of Santa Fe. **Sales are cash only. All monies will go to Barbara for her medical expenses.**

**You must make an appointment to purchase these beads. Please call Jerome at (505) 974-1645.**

Jerome says he can accommodate appointments 7 days a week, beginning at about 11am, but says that Wednesdays are probably the best days.

**All items are upstairs at Jerome's store (up a spiral staircase).** If you are unable (or unwilling) to climb the stairs, Jerome said he is willing to bring boxes down to you – if you have an idea of what you are looking for.

**Put Fiber Arts Fiesta 2024 on your calendar for April 11-13, 2024!**

**It will be here before you know it!**

## Keep in Your Thoughts

Claudette Jaramillo, whose husband recently had knee replacement surgery

Barbara Rosen, whose son was recently in the hospital

All those who are going through a difficult time, whether that may be due to a death, illness, or the stress of modern living

If you would like to send a card or note of encouragement to any of these members, please address the envelope to them **in care of the Bead Society of New Mexico, P.O. Box 91655, Albuquerque, New Mexico 87199**, and we will ensure that they get your messages.

## Happy Birthday

Sylvia Chao – April 29

Sandy Greenfield – April 30

If your birthday isn't listed here, please let us know at [beadsocietynm@gmail.com](mailto:beadsocietynm@gmail.com) so we can wish you a Happy Birthday!

## Get More Information on the BSNM Website

■ **Classes:** For classes taught by our business members and other non-BSNM-sponsored classes, go to <https://beadsocietyofnewmexico.wildapricot.org/Bead-Time> for dates, times, and descriptions.

To review class details and to register online, log in to the BSNM website with your email and password and go to the event page <https://beadsocietyofnewmexico.wildapricot.org/Meetings-Classes-and-Events>.

■ **Craft Shows and Other Events:** To see upcoming shows that our members are involved in, go to the Members Art Shows listing at <https://beadsocietyofnewmexico.wildapricot.org/Art-Shows>. Also, if you have an art show you are participating in, don't forget to send the information and event link to [beadsocietynm@gmail.com](mailto:beadsocietynm@gmail.com) so we can include your event.



## BSNM Financials Available on Website

The monthly and annual financial reports for the Bead Society of New Mexico are now available in the "Members Only" section of the BSNM website (you must have/create an account on the website to access these documents). Go to [www.beadsocietynm.org](http://www.beadsocietynm.org) and log in to the website (click on "Log In" in the far upper right corner of the homepage; you need to register first if you haven't done so before). Hover over the "Members Only" section on the right end of the categories bar with your mouse and click on "Financials" in the drop-down menu. Then click on the document you want to read. (You may need to temporarily disable your pop-up blocker since the documents may open in a new window or tab).

## 2023 BSNM Calendar

The following is the calendar for BSNM meetings and events for 2023. **Dates and events are subject to change.**

General meeting, 3rd Tues., 6:00pm	Board meeting, 2nd Tues., 11:30am	Classes	Special events
Jan. 17	Jan. 5		Annual gala
Feb. 21	Feb. 13	Confetti Polymer Beads	Annual bead swap
March 21	March 14		Whole Bead Show
April 18	April 11	Basic Bead Embroidery	
May 16	May 9		Cherry Hills Library exhibit
June 20	June 13	Stacked Right Angle Wrap Bracelet	Placitas Flea Market
July – no meeting	July 11	Crystals in Epoxy Clay Pendant	Field trip?
August 15	August 8	Macramé with Leather & Pearls	
Sept. 19	Sept. 12		State Fair
Oct. 17	Oct. 10		Elections
Nov. 14	Nov. 7		
Dec. – no meeting	Dec. 12		

As of February 28, 2023



## New Workshops at Gypsy Raven Studio/Gallery

All workshops will be held at Gypsy Raven Studio/Gallery located at 111 W. Broadway, Mountainair, NM 87036. For multiple day workshops, Pamela Armas will make arrangements with local hotels with special rate discounts for those that need overnight lodging. Lunch and dinner can either be brought by the attendee or B Street Deli has a good menu for take-out.

**To sign up for any of the workshops**, contact Pamela Armas by email at [gypsytreasures@cs.com](mailto:gypsytreasures@cs.com) and she will email you a form to fill out to register for class. Mail form and check made out to Pamela Armas to: Pamela Armas, P.O. Box 748, Mountainair, NM 87036. Phone: 505-847-0963. **Maximum of 10 students per workshop. No cancellation refunds within 72 hours of workshop.**

### Bohemian Travels Book

**Thurs., April 13 – Sun., April 16, 2023**  
**10:00 am – 5:00 pm each day**



In this four-day workshop you will create a 9x7-inch leather-covered, beaded-edge book cover with five removable pages. These pages have hand painted backgrounds and are covered with beautiful images and embellishments. Just imagine that Bohemian life! Gypsy Pamela will guide you in laying out collaged pages with images, treasures, and more.

Four-day workshop cost: \$450 plus a \$30 kit fee (kit fee can be paid at workshop). Deposit of \$250 is due March 1, 2023 to hold your place. Balance of \$200 is due April 1, 2023. Material list will be sent to you once you register.

### Slow Stitch Book

**Saturday, May 6, 2023 10:00 am – 5:00 pm**



In this one-day workshop you can create one or two of these small books. The covers of these books are made from coffee-dyed fabric and embellished with a lot of unique stitches and treasures. Each book has three signatures bound to the cover with the coptic stitch. Bring your playful SPIRIT for a day of fun!

One-day workshop cost: \$100 plus a \$30 kit fee (kit fee can be paid at workshop, Gypsy Pamela will have kits for each student to make 2 books). Workshop fee of \$100 is due by April 6, 2023 to hold your place. Material list will be sent to you once you register.

### Buttonhole Book with Jacques Dorier

**Saturday, May 20, 2023 10:00 am – 5:00 pm**

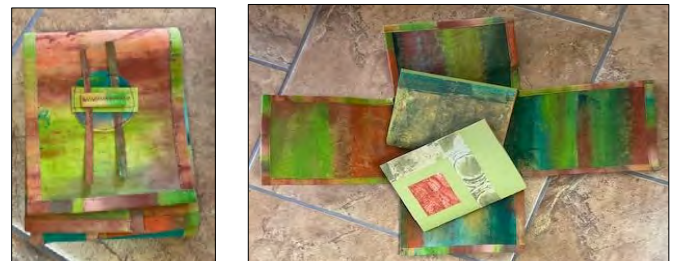


Jacques will share with you all of the techniques to create a 3x4-inch book with a buttonhole spine that shows the different sections of the book. Students will need to prepare in ADVANCE the book pages. Jacques will send each student a text with a video on how to prepare these pages once the student is registered for the class.

One-day workshop cost: \$110. Workshop fee of \$110 is due April 20, 2023 to hold your place. Material list will be sent to you once you register.

### Japanese Etui Fold Book with Gypsy Pamela

**Sat., May 27, 2023 10:00 am – 5:00 pm**



In this one-day workshop you will create a unique 6 ¼-inch x 8-inch (when folded) book cover. The book cover is a four way open fold painted canvas. The cover holds 2 signatures (16 pages each) bound with the coptic stitch. There is room for more signatures to be added to this book if you wish.

One-day workshop cost: \$100 plus a \$20 kit fee (kit fee can be paid at the workshop). Workshop fee of \$100 is due April 27, 2023 to hold your place. Material list will be sent to you once you register.

**NOTE: If you sign up for all three May one-day workshops, you are offered a 10% discount at the Gypsy Raven Gallery!**

## Learn the Round Kumihimo Braid



**Saturday, April 8, 2023 10:00 am to 1:30 pm**

Instructor: Anna Murphy

**Class fee: \$45 + supplies (\$10-\$15)**

- No experience is necessary for this class
- You will learn the basics of the round kumihimo braid using the foam disk
- You will make a sampler that demonstrates how your layout affects the finished pattern. Then you will make a completed bracelet.
- If you have a foam disk and/or your own tools, you are welcome to bring it. You will get a supply list when you register.
- Bring a snack and drink.

**Register at The Beaded Iris, 1512-F Wyoming Blvd. NE, Albuquerque,  
505-299-1856**

 **SPRING ARTS & CRAFTS SHOW**  
**SATURDAY, APRIL 1, 2023**  
10 am to 3 pm  
Rio Rancho Regional Chamber of Commerce  
4201 Crestview Drive SE Rio Rancho, NM 87124  
<http://ssheridan4.wix.com/vacqnm> Variety of artisans & crafters Food Trucks

**Deb Cole, Pam Troutman, and Pat Verrelle have booths at this show.**

# *Spring Pop Up*

*Saturday April 8th*

*From 10am-3pm*

*Where: Found on 4th*

*8909 4th St, NW*

*Los Ranchos*

**Over a dozen artisans gather to welcome the spring and sell their handcrafted items, including Pottery, paintings, jewelry, and more!**

**Jill Bartel will have a booth at this show.**

25<sup>th</sup> Annual  
**Corrales Art Studio Tour**



Auntie, L. BalloVIBINI / red paint studio

**May 6–7, 2023**  
**10:00 a.m. – 5:00 p.m.**

**CorralesArtStudioTour.com**



**Barbara Rosen will share her studio during this event.**  
**For a tour catalog, as well as a map and list of artists, go to**  
<https://corralessocietyofartists.org/studio-tour/>

Join the *Soft Flex* Community!

Live Design Challenges  
Tutorials  
BOGO Offers  
Giveaways  
Special Discount Offers  
Live Sales

Join the "Soft Flex Very Important Beading Studio" Group on Facebook for jewelry making inspiration!

Subscribe to our YouTube Channel for video tutorials!

[www.SoftFlexCompany.com](http://www.SoftFlexCompany.com)

Toll Free Phone (866) 925-3539 • U.S. Phone (707) 938-3539 • Free Shipping on orders over \$65 in the USA

Use coupon code **BeadSociety10** to get 10% off! • DOES NOT APPLY WITH OTHER DISCOUNTS • LIMIT 4 USES PER CUSTOMER

SoftFlex loves to support bead societies, as they are the backbone to our beading community. We have a coupon code for BSNM members. Just enter the code **BeadSociety10** at checkout. Coupon gives 10% off of each item, but it does not apply on top of other discounts and there is a limit of 4 uses per customer. No expiration date.

**MAMA'S MINERALS**  
BEADS, FOSSILS, ROCKS & MORE

**Your One Stop For the Holidays!**

Drilled & Polished Stones & Fossils, Local Artisan Jewelry, Rock Tumblers, Stone Lamps, NatGeo Kits, MamaMade Christmas Ornaments, Gift Certificates, & MUCH MORE

505-266-8443  
[www.MamasMinerals.com](http://www.MamasMinerals.com)  
New Website!

We specialize in providing care for clients who need companionship as well as for clients who need end of life care.

**Help For Your Loved One:**

- Medication reminders
- Cooking favorite meals
- Total personal care including bathing, dressing, and assisting with hygiene
- Changing bed linens and doing laundry
- Light housekeeping
- Assistance with transportation to doctor's appointments, errands, and shopping

9004 Menaul Blvd NE #11,  
Albuquerque, NM 87112  
505-798-0978

Owner: Elizabeth Sands (BSNM member)  
[easands@msn.com](mailto: easands@msn.com)

# dorje designs



Style, soul, and history . . .  
all in a single piece of adornment.

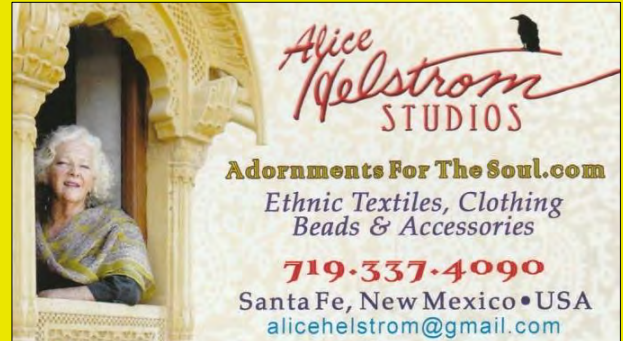
Anna Holland designs unique ethnic jewelry and tribal jewelry using contemporary, antique, and ancient beads and artifacts. Her handcrafted necklaces, bracelets, and rings are all one-of-a-kind treasures, collected and worn by women and men around the world.

<http://www.dorjedesigns.com/>  
[info@dorjedesigns.com](mailto:info@dorjedesigns.com)



10% discount for BSNM members

## Alice Helstrom Studios



Visit our new store:

The Design Center  
418 Cerrillos Road, Santa Fe, NM

10% discount for BSNM members

## Treasure of El Dorado

Lewis S. Toth, Owner and Designer

Handmade Southwestern style jewelry,  
beadwork with semi-precious gems, corals,  
shells, artistic metal, and glass beads  
from all over the world,  
and fetishes imported from Philippines.

Best material and workmanship guaranteed.

Offered to you at affordable prices  
for your enchantment

6508 Rancho Ladera Road NE  
Albuquerque, New Mexico 87113

Phone/Fax: (505) 821-4276

email: [lulutoth7@aol.com](mailto:lulutoth7@aol.com)

registered New Mexico small business  
since 1993

Jerome Nuñez  
Owner

**A FEW OF MY FAVORITE BEADS**  
Seed Beads • Delicas  
Swarovski Crystals & Pearls  
Fire Polish, Daggers & More

10137 Edith Blvd. NE  
Albuquerque, NM 87113

(505) 974-1645

No additional discount for BSNM members

Beads • Findings • Classes

*The Beaded Iris*

(505) 299-1856  
1512-F Wyoming Blvd. NE (N of I-40 at Constitution)  
Albuquerque, NM 87112  
www.thebeadediris.com

10% discount for BSNM members

**Baskets of Africa.com**  
info@basketsofafrica.com

1-505-323-2315 – Local  
1-800-504-4656 – Toll Free

Visit Our Showroom:  
Open 10-3 Mon-Fri

1714 Eubank Blvd NE  
Albuquerque, NM

FAIR TRADE  
FEDERATION  
MEMBER

15% discount for BSNM members

STONE MOUNTAIN  
BEAD GALLERY

Beads, Jewelry &  
Handicrafts of the World

Voted Albuquerque's Best Bead Shop!

Robert Spindling - owner

4008 Central Ave SE  
Albuquerque, NM 87108 505-260-1121

Mon-Sat 11-6 Sun 12:30-4:30  
www.stonemountainbeadgallery.com

30% discount for BSNM members

**Beads and Beyond by Betty**  
Designer  
Betty Smith  
bettygardens@gmail.com  
520-405-8142  
www.BeadsandBeyondbyBetty.com

*Cynthia A. Romero*

Tax Preparation & Planning  
Bookkeeping & Payroll Services

(505) 296-0521  
(505) 263-3646  
Romero111@msn.com

Member NATP

**Get Your BSNM Discount**

To get your BSNM discount at our business members' stores, you must show your current membership card. They won't accept expired cards or membership renewal emails or a letter from your mom!

Don't lose out. Be sure you have your 2022 BSNM membership card and show it when you make a purchase.

## Procedure for Submitting Articles for Publication

Producing a quality monthly publication as well as maintaining an up-to-date website and Facebook page is not an easy task. We have three people who work hard to ensure that our members have the most timely and accurate **information possible. But these tasks take lots of time and can't be done properly without the assistance of our members.** Please remember to follow these procedures when submitting information to be shared with the general membership:

- Send all information to [beadsocietynm@gmail.com](mailto:beadsocietynm@gmail.com)
- Please send just one topic per email and be sure to include the topic in the subject line and indicate that the topic is for publication.
- Do not send articles or information as a response to another email; send a new, separate email.
- Be sure that any artwork, etc., you send is copy-ready in a format that can easily be downloaded and copied – preferably as an attachment (JPG, TIF, or PNG, or incorporated into a Word document).
- Please send complete information. The members of the Communications Committee are not mind readers. ☺ Please provide full names of persons, full addresses and contact information, dates and times, etc.
- Information to be included in the Newsletter MUST be received no later than the 20th of the prior month. Information received after that date will be shared via social media and on the BSNM website, and used for **the following month's publication if appropriate.**

## 2023 Board of Directors

The Board of Directors currently meets in person on the second Tuesday of the month.

*Members are welcome to attend.*

President .....	Barbara Rosen
First Vice President - Special Events and Workshops.....	
Second Vice President – Programs.....	Pat Verrelle
Treasurer .....	Deb Cole
Secretary .....	Helen Yackel
Membership Chair .....	Deb Cole and Barbara Rosen
Newsletter Editor .....	Jill Bartel
Volunteer Coordinator.....	
Member-at-Large .....	Laurye Tanner
Past President.....	
Webmaster.....	Amanda Archuleta
Social Media Manager .....	
Photographer.....	Pam Troutman
Historian.....	
Meeting Coordinator .....	Claudette Jaramillo and Mia Seitz
Membership Recruiter.....	
Fiber Arts Council Representative.....	
Fiber Arts Education Committee Representative .....	Elizabeth (Liz) Reisinger

Copyright © 2023 Bead Society of New Mexico. All rights reserved.

Address: Bead Society of New Mexico, P.O. Box 91655, Albuquerque, New Mexico 87199

Website: [www.beadsocietynm.org](http://www.beadsocietynm.org)

Facebook: <https://www.facebook.com/BeadSocietyNM/>

Contact email: [beadsocietynm@gmail.com](mailto:beadsocietynm@gmail.com)

You are receiving this newsletter because you opted in at [beadsocietynm.org](http://beadsocietynm.org).