



BSNM Newsletter

December 2023

The mission of this newsletter is to inform our members of the activities, events, and classes in the local beading community and to provide a forum where members can share beading knowledge and techniques.

In This Issue

Message from the President
Upcoming Events
Doorprize and Raffle Winners
Time to Renew Membership
40th Anniversary Gala
Our Members' Work
Congratulations
Holiday Greeting Project Idea
Beaded Angel Ornament
Support Our Local Businesses
Beading Groups
The Nature of Glass Exhibit
Gem of the Month
Lighting Solutions for Beaders
Beads on Film
Fiber Arts Beadwork Call for Entries
Museum of Beadwork Challenge
Keep in Your Thoughts
BSNM Financials Available on Website
2023 BSNM Calendar
Art and Craft Shows
Business Member Ads
Procedure for Submitting for Publication
2023 Board of Directors

This newsletter welcomes new ideas from members and solicits articles and items of interest. Any special events taking place in your life (birthdays, anniversaries, condolences needed, new job, moving, births, weddings, awards, trips, transitions, etc.)? All manuscripts are subject to editing. The editor does not assume responsibility for the accuracy of information contained in the articles received. Please send all contributions for the newsletter to the editor in care of the Bead Society of New Mexico.

From the President

Greetings Members,

I am proud to announce that Helen Yackel will be the next Bead Society President. Helen has been a member for a number of years and has served on the Board. She is an accomplished beader, always looking to learn new beading methods. Her specialty is leather macramé and has taught a number of classes during the last two years. I am looking forward to working with Helen and I hope you do too.

I've really enjoyed getting to know many of you. Your support, patience, and dedication have been so appreciated. I want to thank all of you for being members, participating in events, coming to meetings, and volunteering. **The Bead Society couldn't exist without you! I'm looking forward to next year with new classes, programs, and, hopefully, a field trip.**

Speaking of next year, the Bead Society of New Mexico celebrates its 40th year. There will be a gala to celebrate this momentous occasion on January 16th. The tea party last January was such a success that the Board decided to do it again. **Ruby is the stone for 40th anniversaries and we've chosen that color for our theme. There will be more details to follow.**

December is filled with arts & crafts shows. I hope you will take the time to visit some of them and support local artists like yourselves.

Also, now is the time to renew your Bead Society membership. Membership is only \$35 for an individual. You can renew online via the BSNM website (www.beadsocietynm.org), by mailing a check to BSNM, P.O. Box 91655, Albuquerque NM 87199, or by paying by check or cash at a meeting.

I wish you peace, love, and joy during this holiday season and throughout next year.

Barbara Rosen, BSNM President, 301-351-3303,

beadsocietynm@gmail.com, www.beadsocietynm.org,
www.facebook.com/BeadSocietyNM/



Happy Holidays

Upcoming Events

December 12	<p>Board Meeting</p> <p>Tuesday, December 12, 2023 11:30 am to 1:30 pm</p> <p>The Board will meet to conduct the business of the bead society. Current and newly elected Board members please plan to attend.</p>
December	<p>General Meeting</p> <p>There is no general meeting in December due to the holidays.</p> <p>The Bead Society of New Mexico wishes all its members and their families a happy and safe Holiday Season and a wonderful New Year. See you all in January!</p>
January 7, 2024	<p style="text-align: center;">Fiber Arts Fiesta Deadline</p> <p style="text-align: center;">Sunday, January 7, 2024 at midnight</p> <p style="text-align: center;">Note extension of deadline</p> <p>Due to input from the guilds, the deadline for Call to Entry items for the 2024 Fiber Arts Fiesta has been extended from November 30, 2023 to MIDNIGHT on January 7, 2024.</p> <p>This should allow more people to finish up items over the holidays! We hope extension encourages and facilitates more gorgeous entries.</p> <p>To enter, you must submit a photo of your entry and the \$10 entry fee on the Fiber Arts Fiesta website (https://abqfiberartscouncil.org/). The actual entries will be collected in the March 2024 timeframe to allow for judging before the Fiesta.</p> <p>See the announcement elsewhere in this newsletter for the categories in the Beadwork competition.</p>
January 9, 2024	<p>Board Meeting</p> <p>Tuesday, January 9, 2024 11:30 am to 1:30 pm</p> <p>The Board will meet to conduct the business of the bead society. Current and newly elected Board members please plan to attend.</p>
January 16, 2024	<p>General Meeting</p> <p>Tuesday, January 16, 2024 6:00 pm to 8:00 pm (set-up, social time, and buying raffle tickets beginning at 5:30 pm) Heights Cumberland Presbyterian Church, 8600 Academy Rd. NE</p> <p>We will have a brief business meeting and then party and conduct our annual fundraiser raffle. Everyone is encouraged to wear red – including a hat if desired. (Some of the Board members found red fastenators on Amazon.) There will be a special red raffle basket, as well as other items to bid on.</p> <p>Don't forget to bring your money for raffle tickets and to renew your annual dues.</p>
February 20, 2024	<p style="text-align: center;">General Meeting</p> <p style="text-align: center;">Tuesday, February 20, 2024 6:00 pm to 8:00 pm (set-up, social time, and buying raffle tickets beginning at 5:30 pm) Heights Cumberland Presbyterian Church, 8600 Academy Rd. NE</p> <p>Claudette Jaramillo is teaching a copper stamping class.</p> <p>This class will include kits for the necklace at no cost to members. Each table will be provided with a stamping surface and multiple stamps. Each table will have a board member ready to assist with this project. Stamped metal charms are a fun accent to add to all your jewelry. Please come and enjoy this project.</p> <p>What you need to bring:</p> <ul style="list-style-type: none"> • Hammer (Claudette recommends getting a short-handled hammer from Harbor Freight; only \$2.99) • Basic wire-working tools • Bead mat • Magnifiers, if needed



Winner, Winner

Congratulations to **Helen Yackel** who won the door prize at the November general meeting: her choice of a beading/jewelry book from the BSNM stash.

Congratulations to **Betty Smith** who won the Black and White raffle basket at the November general meeting. Betty generously donated the basket for the raffle at the January gala. Thanks Betty!

Time to Renew Your Membership

Now is the time to renew your BSNM membership!

Cost is \$35 for individual membership, \$45 for household membership, \$55 to \$200 for business membership (depending on desired level).

You can renew with a credit card on our website, www.beadsocietynm.org/. (This is a secure website.)

Or mail your check to:

Bead Society of New Mexico

Attention: Membership

P.O. Box 91655

Albuquerque, New Mexico 87199

40th Anniversary Gala

The traditional gift for the 40th anniversary is ruby. **While we can't afford rubies at our anniversary gala on January 16, 2024, we will definitely be seeing red!**

The theme will be an Anniversary Tea. Everyone is encouraged to wear red – including a hat if desired. (Some of the Board members found red fasteners on Amazon.) There will be a special red raffle basket, as well as other items to bid on.

It's not too early to start gathering items to raffle off at the January gala. If you have something to donate or you know of a business or individual who might be willing to donate, please contact Helen Yackel at nmlady05@gmail.com or 505-850-8983 (we have donation letters that you can give them). We need a **good variety of new or gently used items for the raffle:** jewelry, accessories (such as scarves, purses), gift certificates (for bead stores, restaurants, etc.), home décor (such as pillows, glassware, artwork)

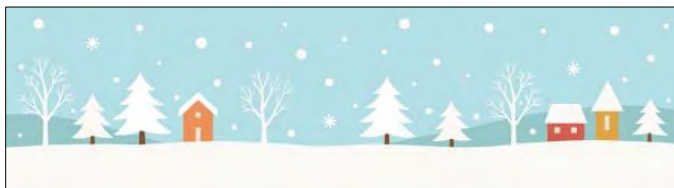
Our Members' Work

Shown here is Liz Sands' beaded purse in progress. She will be adding fringe to it. Liz started her purse in a class she attended in Massachusetts. We can't wait to see the finished project!



Congratulations

Betty Smith celebrated her birthday recently. Then she left the next morning on a cruise! Bon voyage, Betty!



Holiday Greeting Project Idea

Send a Christmas, Hanukkah, Kwanzaa, or Winter Solstice greeting using beads. In Africa, children send messages to one another using strands or designs of beads. (These are sometimes called Zulu love letters.) You can use the African color code (provided below) or make up your own color code. For something quick and easy, use pony beads and jute to string them on. For something more elaborate, use smaller beads or crystals and beading thread or wire to string them. Create a holiday message or story.

Black – missing someone, sad someone is saying goodbye, grief, loneliness

Blue – loyalty, making a request, wanting something; can also mean that you are angry about something

Brown – hope

Green – love sickness, jealousy

Pink – promises kept, high status and rank, working hard; can also mean laziness (depending on context)

Red – strong emotions, lots of love, longing; can also mean a broken heart, sadness

Turquoise – impatience

White – purity, vision, love, spirituality, cleanliness, good things

Yellow – wealth (or lack of it), creating things, fading away

Striped – doubt, accusation



Beaded Angel Ornament

from Make-Stuff.com, contributed by Daria Akers

You will need:

- 28 8-mm beads (for dress)
- 1 16-mm bead (for head)
- 42 3-mm by 6-mm beads (for halo and wings)
- 1.5 yards of 24 gauge wire

Instructions:

1. Find the center point of the wire. Bend wire into an L-shape at the center.
2. Slide 7 of the 8-mm beads to the bend in the wire.
3. Slide 6 of the 8-mm beads onto one end of the wire, keeping them near the end. Thread the other end of the wire back through the 6 beads and pull tight.

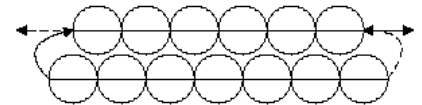


Diagram 1

4. Flatten out the rows as needed. (see diagram 1)
5. Slide 5 of the 8-mm beads onto one end of the wire, pass the other end of the wire through all 5 beads, and pull tight.

5. Continue adding beads using the same method until there is a row with just one bead.

6. Take the longer end of the wire and thread 17 of the 3x6-mm beads on it. Pass the wire through the row of 3 (8-mm) beads. Then thread 17 of the 3x6-mm beads on the wire and then pass it through the row of 1 (8-mm) bead. (see diagram 2)

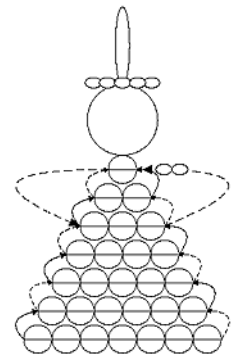


Diagram 2

7. Pass both ends of the wire through the 16-mm bead.
8. Take the longer end of the wire and thread 8 of the 3x6-mm beads for the halo. Take the other end of the wire and form a hanger loop. Take both ends of the wire and wrap them around the wire just below the halo.
9. Cut off any extra wire and adjust the wings.



Support Our Local Businesses

A Few of My Favorite Beads: Call 505-974-1645 or come by to see our latest beads. We carry seed beads, crystals, and other bead items for your projects.

Baskets of Africa: Come see our great selection of beautiful artisan-made, fair-trade baskets. Call 505-323-2315 for appointment or go to info@basketsofafrica.com.

Beadweaver of Santa Fe: We are still offering a 10% discount to BSNM members.

The Beaded Iris: We offer 10% discount to BSNM members, as well as our punch cards for future savings. Come on into the store and rediscover all the beads, crystals, delicas, findings, thread, and other products you need to complete your beautiful project. **Open beading on Wednesdays.** Store hours are Mon. through Thurs. 10am to 5pm; Fri. through Sat. 10am to 4pm. Sun. closed. Phone: 505-299-1856; email: beadedirisstore@aol.com.

Glorianna's Beads (Santa Fe): 70 West Marcy Street, Suite B. Phone: 505-982-0353. Open Tues-Wed and Fri-Sun 10:30am to 4pm.

Mama's Minerals: Come to our new store at 2500 12th Street (12th and Menaul), right across from the Indian Pueblo Cultural Center. **We can't wait for you to see the new shop!** Bead Society members get 15% off on regular-priced merchandise. www.MamasMinerals.com.

Meltdown Studio: Check out our new and returning classes at <https://www.meltdownstudio.com/group-classes-1>.

New Mexico Bead Company: New Mexico Bead Company is located at 4111 Louisiana NE, Albuquerque (north of Montgomery). 505-243-2600. Website: <https://www.nmbead.com/>.

Santa Fe Jewelers Supply: Open 9:00am to 5:00pm. Curbside pickup, mail order, or visit our showroom today! Order on our website at www.sfjs.net day or night. Phone: 505-988-9157.

Stone Mountain Bead Gallery: We're open Mon. through Sat. from 11am to 6pm; Sun. 12:30pm to 4:30pm. Call 505-385-2200 to arrange contactless pickup. **20% off for BSNM members.** Back issues of *Bead&Button* magazine are 50% off.

Thomason Stone Supply: Stop by and see all the new goodies!! We have everything you need for creating beautiful jewelry! Store hours are Mon. through Sat. 10am to 6pm. Call us at 888-353-9934 or 505-268-9934. Website: <https://www.thomasonstonesupply.com/>.

Thunderbird Supply Company: See our website (<https://www.thunderbirdsupply.com/>) for online and in-store specials. Store hours: Mon.-Fri. 9am-6pm; Sat. 10am-5pm.

Treasures of the Gypsy/Gypsy Raven: Treasures of the Gypsy Show Room is open by appointment, as well as for classes. Please contact Pamela Armas to schedule your appointment at 505-847-0963, or email her at gypsytreasures@cs.com

Beading Groups

Bosque Farms: Do you live in the Bosque Farms area? Join BSNM member Kathy Jost at the Bosque Farms Community Center for the **BFCC Bead Group on the 2nd and 4th Thursday of the month from 2:00 pm to 5:00 pm.** Bosque Farms Community Center is located at 950 N Bosque Loop in Bosque Farms, New Mexico. Phone: 505-869-5133.

Placitas: This beading group is taking a break. We'll let you know when they start meeting again.

The Nature of Glass Exhibit

**New Mexico Museum of Art,
107 W. Palace Ave., Santa Fe
through December 31, 2023**

"The Nature of Glass" exhibit focuses on 28 contemporary works by such household names as Judy Chicago, Georgia O'Keefe, and Preston Singletary, as well as William Morris, Robert Wilson, and Tony Jojola.

The featured techniques include blown, hot-wired, etched, assemblage, sand carved, cast, kiln-formed, stained, and more. Most of the works reflect nature or the environment via images of flora and fauna, as well as the human body, said curator Christian Waguespack.

"This looks at how [artists] brought nature into their work through the representation of flowers, animals, the body, space, science, and the environment," Waguespack said. "It's pretty broad."

Glass has been used as an artistic medium for thousands of years and remains one of the world's most prevalent art forms.

"Glass is becoming more and more popular in New Mexico," Waguespack said. "We've got several glass studios in Santa Fe. Even [famed glass artist Dale] Chihuly taught at the Institute of Indian Arts and Culture. It's definitely got a presence here and a big, strong following."



Gem of the Month – Turquoise

Turquoise, the “fallen sky stone,” “gem of the centuries,” is indigenous to the Americas, Egypt, ancient Persia (Iran), Tibet, and China. Throughout human history, the stone has been revered and admired for its beauty and reputed spiritual life-enhancing qualities. The oldest known piece of jewelry, a turquoise bracelet, was found on the wrist of a 7,000-year-old mummified Egyptian queen.

The oldest mine of any kind on the North American continent, the Cerrillos turquoise mine just south of Santa Fe, New Mexico, dates back at least 2,000 years. Ancient Pueblo peoples dug deep into the stony ground using antlers and stone mauls to bring up the precious turquoise, a true labor of love. To the Pueblo peoples and the Navajos, turquoise is sacred, takes its color from the sky, and symbolizes the supreme, life-giving, and healing power of the Creator. Originally, indigenous peoples of the Southwest carved turquoise into beads or animal fetishes or overlaid it onto wood, bone, or shell using such fixatives as beeswax or piñon pine pitch. The Spanish introduced silver mining, smelting, and smithing technology into the Southwest in the sixteenth century. Combining that new knowledge of silver with the turquoise stone, the Native Americans created an industry of beauty.

Silver and turquoise jewelry is increasingly renowned around the world. Turquoise is New Mexico's gemstone and is recognized as the birthstone of December. It has been known by this name since the French purchased the “turkey stone” from Turkish traders, never realizing that the turquoise was mined in Persia and later traded to the Turks.

Turquoise generally forms in arid climates and, therefore, large deposits have been found in the southwest United States, China, Iran, Chile, and Mexico. Each turquoise mine is marketed by its name, such as Cerrillos, Bisbee, Sleeping Beauty, Kingman, Morenci, Number 8, Royston, Pilot Mountain, and Blue Gem. These are all American mines.

China and Tibet have large mines also. In fact, about 80 percent of all the turquoise on the market worldwide today is Chinese or Tibetan. The currently popular chunky blue-green turquoise nuggets with dark spider-web matrix are mined north of Bhutan high in the mountains of the former Tibet. Northwest of Shanghai is the Ma'ashan turquoise mine, and the Hubei Province produces turquoise colors reminiscent of the much-prized blues and greens of the now closed mines in Nevada. Most of the remaining 20 percent is American, once came from the Sleeping Beauty and Kingman mines. (The price of natural untreated Sleeping Beauty turquoise has risen dramatically since the mine's closing in 2012. The Kingman Mine as of 2015 still operates alongside a copper mine outside Globe, Arizona.) The other American mines are producing very little or no turquoise. Stones from these highly collectible but depleted mines come onto the market from collections from time to time.

As for shopping for turquoise jewelry, there are some basic understandings necessary in order to make a

savvy choice that will serve one's artistic and economic needs. Turquoise (hydrated cupric aluminum phosphate) is a porous stone that is created in a manner that is not well understood. Let's say that water gradually seeps through a host rock, interacts with copper, iron and aluminum in a very rare situation over a period of thousands (or millions) of years, producing a turquoise of various hardnesses that can have many colors, ranging from deep green and yellow green to a strong bright blue and very light blue. Also, part of the host rock or other minerals included in the turquoise can display a handsome design of black, browns and other colors, known as matrix. This overall process is so rare that diamond formation is common by comparison.

There are five “kinds” of turquoise as described by law:

Natural turquoise – turquoise that is so hard and beautiful that it is simply mined, cut, polished, and set into a piece of jewelry or carved into a fetish or sculpture. Less than **3 percent** of all the turquoise on the market worldwide is natural.

Stabilized turquoise – soft or “chalk” turquoise has been infused with a clear epoxy resin. The resin, under pressure, absorbs into the rock, which permanently hardens the rock and deepens the color. Unlike the collectible natural turquoise which deepens in color over time by gradually absorbing oils from the skin as it is worn, the colors in stabilized turquoise are permanent. Most of the turquoise on the market is stabilized and should not cost as much as natural. Stabilized turquoise can be very beautiful, and is a good buy.

Treated turquoise - soft or “chalk” turquoise that is stabilized as described above, except that the epoxy resin is also dyed. Colors in treated turquoise have a tendency to look artificial. Prices should be much less than natural or stabilized.

Reconstituted turquoise - turquoise “chalk” that is very low grade and has been ground into powder, saturated with epoxy resin, dyed, and compressed into blocks or cakes to be cut into shapes for jewelry making. Prices should be most inexpensive.

Imitation turquoise - there is no turquoise in this category. Either there are stones like howlite (white stone, very porous) dyed to look like turquoise or there is pure plastic (epoxy resin) that has been dyed to look like turquoise. It is a shame that these materials are set in silver and priced as if they had intrinsic value.

Unfortunately, treated, reconstituted, and imitation turquoise can be made to look remarkably like collectible stones. Trust is the bottom line. Be sure that the seller guarantees that the jewelry is what he or she says it is, not just verbally, but in writing, including a signature on the sales document with the name of the store on it. Be sure the description is complete. Also be sure to shop at businesses that offer refunds, whether the item was bought on sale or not.

Gift Guide: Lighting Solutions for Beaders and Metalsmiths

Interweave Editorial Team, November 22, 2023:

https://www.interweave.com/article/jewelry/gift-guide-lighting-solutions-for-beaders-and-metalsmiths/?utm_campaign=IW+Beading+-+Newsletter&utm_id=Newsletter_20231128_GPM231127019&utm_medium=email&utm_source=omeda&oly_enc_id=7354A2943523A3R

There is no doubt that good lighting makes it easier to make beautiful beadwork and jewelry. With bright lighting, you can match colors and see essential details. Show your favorite beader or metalsmith you care while brightening their day. We are here to shed some light on top lighting gifts for you and the other makers on your list, for a variety of different preferences and applications.

Lighting to Wear



The Carson NeckLight hands-free light is great for times when you need extra light focused on your work. Or you can use it to read-up on techniques wherever you are. Do you know a beader who likes to stitch in front of the TV or around the campfire? Boom. It has two light modes for different light preferences. About \$20.

Portable Task Lighting



See every color as if you are in natural daylight with the UnoLamp Clamp. We love its flexible arm that points bright light on your work surface. This version has a clamp that you can easily attach to your studio

bench or table—or take it along to a workshop. Four brightness levels. About \$60.

Grade Gemstones



Grade gemstones with different intensity light for true colors of diamonds, gemstones, pearls, and jewelry enhancements using this grading lamp. There are four Kelvin settings on the GemOro Horizon 2 LED Grading Lamp. It is easy to pack for travel and even has a built-in USB port for charging your device. About \$100.

Choose Your Lighting Adventure



The OttLite Ultimate 3-in-1 Craft Lamp is an illuminated magnifier, lamp, and clip combo that transforms from clamp-on to tabletop to floor lamp for maximum flexibility. It also has a charging outlet so you can charge your phone or watch a video while you work. About \$250.

Shine Bright



Once you have tried CraftOptics, you cannot go back to regular old reading glasses. And the DreamBeam 3 Light is next level, with bright light exactly where you are looking. It attaches to the center of your CraftOptics. No shadows and no hands in the way means you can see details better than ever before. About \$300.

Light Your Videos



We used the Daylight Gemini at Bead Fest 2022 and appreciated the bright, repositionable lights and cell phone holder for taking selfies and making videos. But it would also be very convenient at your workspace, whether that is a studio situation or over near your favorite chair. It comes with a carrying case so you can take your show on the road. About \$320.

Beads on Film

Looking for something to entertain the family during the holiday break? Or maybe just something to curl up with on a chilly winter's evening? Rent or buy these movies and no one will guess that you're really watching them for the beads and jewelry!

- **Autumn in New York**
2000, starring Winona Ryder and Richard Gere
Check out the beaded curtain in her apartment.
- **Breakfast at Tiffany's**
1961, starring Audrey Hepburn and George Peppard
Jewelry at breakfast—what a way to start the day!
- **Cinderella**
1950, Disney animation
Gus the mouse expresses the sentiments of most of us when he exclaims "Beads!"
- **Diamonds Are Forever**
1971, starring Sean Connery and Jill St. John
James Bond chases diamonds from Europe to Las Vegas.
- **Desperately Seeking Susan**
1985, starring Rosanna Arquette, Madonna, and Aidan Quinn
Stolen Egyptian earrings and the jewelry trends of the mid-1980s are among the highlights.
- **The First Wives Club**
1996, starring Goldie Hawn, Bette Midler, and Diane Keaton
Three women are bound together by friendship, love, and pearl jewelry.
- **Gentlemen Prefer Blondes**
1953, starring Marilyn Monroe and Jane Russell
Learn why diamonds are a girl's best friend.
- **The Ghost and the Darkness**
1996, starring Val Kilmer and Michael Douglas
Ethnic jewelry includes a lion's tooth necklace, a bone "witch doctor" pendant, and Masai beaded jewelry.
- **Moulin Rouge!**
2001, starring Nicole Kidman and Ewan McGregor
The greatest thing you'll ever learn is just to love and be loved in return—but diamonds run a close second.
- **A Patch of Blue**
1965, starring Sidney Poitier, Elizabeth Hartman, and Shelley Winters
A blind young woman strings beads to earn money.
- **Pretty Woman**
1990, starring Richard Gere and Julia Roberts
Every woman feels pretty in a ruby-and-diamond necklace.
- **Romancing the Stone**
1984, starring Kathleen Turner and Michael Douglas
Join the chase for an enormous emerald.
- **The Ten Commandments**
1956, starring Charlton Heston and Yul Brynner
The Egyptian jewelry is great and check out what the Ethiopians bring as tribute.
- **Thoroughly Modern Millie**
1967, starring Julie Andrews and Mary Tyler Moore
Flapper beads are all the rage.



Fiesta 2024

Call for Entries

Due January 7, 2024

Beadwork

Sponsored by:

The New Mexico Bead Society

A bead is defined as a small piece of glass, stone, or similar material, typically rounded, and perforated for threading

Judged with Cash Awards. Each category includes two monetary awards of \$50 1st place, \$25 Runner-Up for a total of \$75 per category.

Betty Whiteman Best of Show Award: \$50

Open to All

B101: All bead embroidery entries.

B102: Woven bead entries made both off and on loom, including kumihimo

B103: Beaded entries featuring beads MADE by the artist (minimum 50% components)

B104: Beaded entries featuring beads NOT made by the artist.

B105: Beaded non-jewelry (home décor and clothing) items (beads must comprise 50% of the Item)

B106: Metal jewelry items including chain mail and wire work (wire/metal must comprise 50% of the item)

B107: Not Judged: Beadwork by youth 12 years or under as of January 15, 2022

B108: Not Judged: Beadwork by youth 13- 18 years of age.

RULES FOR SUBMISSION OF BEADWORK

1. Work must have been completed by entrant after March 1, 2022.
2. Please label each piece with your name, address and the title of the piece.
3. All entries must be finished and ready to display.
4. The jury in each division and/or the Exhibition Committee reserves the right to reclassify an entry into another division and/or category when deemed appropriate based upon the description and photo(s) submitted on the **Fiesta Entry Form**.
5. Entries may not be removed from display until Fiesta closes. Professional Security is provided during Fiesta off-hours/overnight.

Note: Call for Entries opened October 1, 2023 and will close Sunday, January 7, 2024 at midnight. The entry forms are available on the Fiber Arts Council website (<https://abqfiberartscouncil.org/>). **To enter, you must submit a photo of your entry and the \$10 entry fee on the Fiber Arts Fiesta website.** The actual entries will be collected in the March 2024 timeframe to allow for judging before the Fiesta.

Museum of Beadwork Challenge 2024

<https://www.museumofbeadwork.org/pages/a-novel-tea-challenge>



"Tea Service" by Melissa Shippee

The second annual Museum of Beadwork Challenge is open to submissions!

This challenge is once again being co-sponsored by Miyuki Co., Ltd., and Caravan Beads, and the Museum of Beadwork (MOB) is very grateful for their support. In addition to prizes, selected entries will be part of an exhibition in 2024.

Challenge Details

The MOB Challenge will have 5 categories:

Sculpture - Free standing 3-dimensional pieces.

Tapestry - Hanging/wall pieces, or framed work, generally 2-dimensional.

Clothing - Embroidered or constructed garments.

Accessories - Purses, shoes, masks, etc.

Jewelry - Body adornment other than clothing or accessory items.

Requirements:

All entries must evoke the challenge theme for this year: **A Novel Tea: A Spot of Beads and Whimsy**

This year's theme is tea parties; from realistic representations to the delightfully unconventional, inspired by literature, film, fantasy, or any other tea party-infused ideas you can envision. The Museum of Beadwork's staff are avid readers and hobby historians, and honestly, who doesn't love a tea party? So come have a spot, brew up an idea, and pour out your imagination (with one lump or two)!

- One entry per person. Entries must be made by a single person; no group entries allowed.
- All entries must be of original design: winning designs from any other contests may not be submitted.
- Any beading technique or combination of techniques may be used.
- All entries must be comprised primarily of Miyuki beads (70% or higher). This does not include things like armature, support, substrate, etc. Any Miyuki beads are acceptable, not just Delica beads. If you are unsure about the beads you have, contact your supplier for help.
- This is an international competition; entries from all countries are encouraged.
- There is no size limitation for this competition. Just remember that if your entry is chosen you will be expected to cover the shipping to and from Portland, Maine.
- The initial judging is based on digital images. Each entry can submit up to 10 images. Do not mail your actual beadwork to us until instructed to do so.
- The selected entrants from the initial round will be required to send in or deliver their completed pieces in order to be considered for the final judging.
- If your entry requires special display fixtures you are expected to send those as well, along with clear and simple instructions for display. If you have questions about special display needs, please contact us directly. (This does not include typical neck forms or mannequins. Feel free to inquire with questions before shipping).
- Selected entries will be on exhibit for a 1-year show in the Museum of Beadwork gallery.
- **All applications, entrance fees, and photos must be received no later than midnight on March 15th, 2024.** Entry fee is \$30, payable through the MOB website. Late submissions will not be considered.
- Please check out our last MOB Challenge to see the finalists and winners [here](#).
- PDF Application [here](#).

Prizes:

Grand Prize - \$500 cash prize plus \$500 Caravan Beads gift certificate

Best of Category (5 prizes, one in each category) - \$300 Caravan Beads gift certificate

Judges Choice (1 from each judge from any category) - \$150 Caravan Beads gift certificate

People's Choice (This award will be given after the opening of the Exhibition as it will be chosen by votes from attendees) - \$150 Caravan Beads gift certificate

Judges' decisions are final. Entries will be judged on:

- Overall visual presence
- Craftsmanship

- Difficulty
- Use of beads
- Originality/creativity
- Connection to the theme
- All entrants will be informed via email whether they have been selected for the final round of judging or not.
- If you are selected for the final round you will also receive email notification with details on how to proceed.

Exhibit Details:

- Do not mail beadwork until instructed to do so.
- Only entries that make it to the second round of judging will be exhibited.
- Exhibition dates will be from June 1st, 2024 to May 31st, 2025.
- Artists will be responsible for all shipping to and from the Museum of Beadwork.
- **Voting for the People's Choice category will take place from the opening of the exhibit until June 29th, 2024.** Your piece must physically be on display to qualify.

Other Details:

- The Museum of Beadwork, Caravan Beads, Inc., and Miyuki co., Ltd. retain the right to photograph all entries and use those photographs as well as any photography entered into the competition in any lawful way including (but not limited to) publicity, marketing, publication, exhibitions, etc., in perpetuity with full credit to the artist.
- Employees, Owners and Board members of The Museum of Beadwork, Caravan Beads, Inc., and Miyuki Co., Ltd., are not eligible to participate in the competition.

Ethnic Collection Purchased

by Robert Steinberg, Stone Mountain Bead Gallery

Stone Mountain Bead Gallery recently purchased an amazing group of beads from the estate of Melanie Alter. Melanie was a founding member of the original Bead Society of New Mexico back in the 1980s, and was a serious, long-time collector and designer. She passed away on March 17, 2023, and her sons are working with me to evaluate and sell her collection. They tell me a lot more is being organized and coming, but I have many of her unusual African beads at my store now.

Bead Society members are invited to visit my store to see these treasures. Following are photos of some of the strands of beads.



Fiber Arts Council

The Albuquerque Fiber Arts Council is looking for candidates who are interested in promoting fiber arts in New Mexico to fill board positions. If interested, please go to <https://abqfiberartscouncil.org/fiber-arts-council/> to fill out an application. (This is different than being BSNM's representative to the Council.)

The Albuquerque Fiber Arts Council was formed in 1997 to provide the opportunity for local fiber guild members to show their work to the public. It has grown from six guilds then to almost twenty. The Board of Directors has seven members who are dedicated to continuing the tradition of hosting the Albuquerque Fiber Arts Fiesta every other year. As a 501(c)3 organization, the proceeds from the Fiesta provide funding for other public shows and scholarships.

The Council is also seeking individuals interested in working on the marketing committee. If you would like to be involved and work with a great team promoting Fiber art, please email michellejackson@quiltfashions.com

Studio Space Available

Business partners Sally Jewell and Sally Williams have opened a 1,700-square-foot studio in the Hoffmantown Shopping Center at Menaul and Wyoming for all fiber arts crafts. They offer guilds, groups, or individuals a meeting space, a gathering work space, or an opportunity to use the space to teach classes.

The partners are both mothers and work full time, so the space is currently open Fridays and Saturdays, but will open and host any group when requested.

The Sewing Place Abq
8252 Menaul Blvd. NE, Albuquerque, NM 87110
thesewingplaceabq@gmail.com, 505-705-2952
www.thesewingplaceabq.com



Bead Store for Sale

After 30 years in retail and 50 years in jewelry, imports, and wholesale, **Robert Steinberg, owner of Stone Mountain Bead Gallery (voted Albuquerque's Best Bead Store), is selling off his huge accumulation beads, jewelry, and world handicrafts.**

Included are thousands of strands of vintage Czech beads; African trade beads; gemstone and mineral beads; Native American turquoise and heishi; and more. Also loads of silver and gemstone jewelry; Bali silver beads; wood, ceramic, glass, brass, and stone beads; Swarovski crystals; costume jewelry; seed beads by the pound; and handicrafts, art, and jewelry from Nepal, India, Tibet, Thailand, Bali, and Turkey. Collectables and statues – oriental, Native American, dragons, skulls, Buddhas, malas, and rosaries.

Quantity discounts!

Also, building for sale: retail space on Route 66/ Central Ave. in popular Nob Hill neighborhood. 5,000 square feet currently divided into two stores. Signage and huge parking lot.

Contact: Robert Steinberg
Stone Mountain Bead Gallery
4008 Central Ave. SE, Albuquerque, NM 87108
Phone: 505-260-1121
Email: rsteinberg50@comcast.net

Fundraiser for Barbara Butcher

Barbara Butcher, who has been battling cancer, had a stroke earlier this year that left her with limited use of her right arm and leg. Consequently, she will probably need 24-hour assistance going forward.

To help combat this expense, Jerome Nunez of A Few of My Favorite Beads has volunteered to sell the leftover stock from Barbara's former store, The Beading Heart of Santa Fe. **Sales are cash only. All monies will go to Barbara for her medical expenses.**

You must make an appointment to purchase these beads. Please call Jerome at (505) 974-1645.

Jerome says he can accommodate appointments 7 days a week, beginning at about 11am, but says that Wednesdays are probably the best days.

All items are upstairs at Jerome's store (up a spiral staircase). If you are unable (or unwilling) to climb the stairs, Jerome said he is willing to bring boxes down to you – if you have an idea of what you are looking for.

Keep in Your Thoughts

All those who are going through a difficult time, whether that may be due to a death, illness, or the stress of modern living

If you would like to send a card or note of encouragement to any of these members, please address the envelope to them **in care of the Bead Society of New Mexico, P.O. Box 91655, Albuquerque, New Mexico 87199**, and we will ensure that they get your messages.

Happy Birthday

Linda Reyes-Alicea – December 7

Pam Troutman – December 11

Jill Bartel – December 26

If your birthday isn't listed here, please let us know at beadsocietynm@gmail.com so we can wish you a Happy Birthday!

Get More Information on the BSNM Website

■ **Classes:** For classes taught by our business members and other non-BSNM-sponsored classes, go to <https://beadsocietyofnewmexico.wildapricot.org/Bead-Time> for dates, times, and descriptions.

To review class details and to register online, log in to the BSNM website with your email and password and go to the event page <https://beadsocietyofnewmexico.wildapricot.org/Meetings-Classes-and-Events>.

■ **Craft Shows and Other Events:** To see upcoming shows that our members are involved in, go to the Members Art Shows listing at <https://beadsocietyofnewmexico.wildapricot.org/Art-Shows>. Also, if you have an art show you are participating in, don't forget to send the information and event link to beadsocietynm@gmail.com so we can include your event.

BSNM is scheduled to have a booth at the Placitas Flea Market on Saturday, June 8, 2024.

BSNM Financials Available on Website

The monthly and annual financial reports for the Bead Society of New Mexico are now available in the "Members Only" section of the BSNM website (you must have/create an account on the website to access these documents). Go to www.beadsocietynm.org and log in to the website (click on "Log In" in the far upper right corner of the homepage; you need to register first if you haven't done so before). Hover over the "Members Only" section on the right end of the categories bar with your mouse and click on "Financials" in the drop-down menu. Then click on the document you want to read. (You may need to temporarily disable your pop-up blocker since the documents may open in a new window or tab).

2023 BSNM Calendar

The following is the calendar for BSNM meetings and events for 2023. **Dates and events are subject to change.**

General meeting, 3rd Tues., 6:00pm	Board meeting, 2nd Tues., 11:30am	Classes	Special events
Jan. 17	Jan. 5		Annual gala
Feb. 21	Feb. 13	Confetti Polymer Beads	Annual bead swap
March 21	March 14		Whole Bead Show
April 18	April 11	Basic Bead Embroidery	
May 16	May 9		Cherry Hills Library exhibit
June 20	June 13	Stacked Right Angle Wrap Bracelet	Placitas Flea Market
July – no meeting	July 11	Crystals in Epoxy Clay Pendant	
August 15	August 8		
Sept. 19	Sept. 12		State Fair
Oct. 17	Oct. 10	Multi-strand Finishing	Elections
Nov. 14	Nov. 7	Macramé Wrap Bracelet	
Dec. – no meeting	Dec. 12		

As of October 29, 2023

2023 Holiday Craft & Plant Fair

Fri, December 1
Sat, December 2
9 am to 4 pm

Festive Food & Fun!
Over 35 Arts & Craft Vendors
Wreaths - Poinsettias - Succulent Bowls
Visit our Unique Garden Shop!

Albuquerque Garden Center
10120 Lomas Blvd NE (inside Los Altos Park)
AlbuquerqueGardenCenter.org
505-296-6020
Council of Albuquerque Garden Clubs is a 501(c)(3) non-profit organization

Jill Bartel will have a booth at this event (Booth 2).

Sales support the maintenance and preservation of the Old Church

40 New Mexico Artists!
Exceptional Art!
Historic Venue!

Free Parking & Admission

CSA
CORRALES OLD CHURCH
1971-2023

35th Annual JURIED WINTER CRAFT SHOW

Handcrafted Works of Art

Friday
Saturday
Sunday

DECEMBER 1-2-3
10 am to 4 pm

in the Historic Heart of Corrales
Old San Ysidro Church
966 Old Church Road • Corrales

www.CorralesHistory.org

FIRE & SUN
Traditional Jemez Food Vender

Barbara Rosen has artwork in this show.

Whole Bead Show

March 22-24, 2024
Friday & Saturday 10am-6pm,
Sunday 11am-4pm

Santa Fe Community Convention Center,
201 W Marcy Street, Santa Fe NM 87501

This show is open to the general public. No pre-registration is required or offered.

WHOLESALE – Bring a copy of your state-issued resale license to purchase as a wholesale buyer.

ADMISSION IS FREE with coupon

For more information, go to
<https://wholebead.com/showssf24/>

Fiber Arts Fiesta 2024

"Save the date"
April 12 and 13 2024
10 AM - 5 PM
Manuel Lujan Building
Expo NM

general admission - \$10
Expo parking additional cost

- Exhibits
- Vendors
- Classes

presented by

ALBUQUERQUE
Fiber Arts Council

For more information visit:
www.abqfiberartscouncil.org
an all volunteer
501 (c) (3) organization

Join the *Soft Flex* Community!

- Live Design Challenges
- Tutorials
- BOGO Offers
- Giveaways
- Special Discount Offers
- Live Sales

Join the "Soft Flex Very Important Beading Studio" Group on Facebook for jewelry making inspiration!

Subscribe to our YouTube Channel for video tutorials!

www.SoftFlexCompany.com

Toll Free Phone (866) 925-3539 • U.S. Phone (707) 938-3539 • Free Shipping on orders over \$65 in the USA

Use coupon code **BeadSociety10** to get 10% off! • DOES NOT APPLY WITH OTHER DISCOUNTS • LIMIT 4 USES PER CUSTOMER

We have a coupon code for BSNM members. Just enter the code **BeadSociety10** at checkout. No expiration date. Coupon gives 10% off of each item, but it does not apply on top of other discounts and there is a limit of 4 uses per customer.

MAMA'S MINERALS
BEADS, FOSSILS, ROCKS & MORE

Member Discounts
standard exclusions apply

- 15% Off Every Day
- Bulk Bead Discount
- 25% Off \$125
- 30% Off \$200

2500 12th Street (12th and Menaul),
right across from the
Indian Pueblo Cultural Center

2023 Quarterly Schedule

- Feb 27 - March 25
- May 30 - June 24
- Sept 18 - Oct 14
- Nov 27 - Dec 16

Home Decor • Sterling Silver • Mineral Specimens
Kids Geo Kits • Geodes • Petrified Wood • Beads

Albuquerque, New Mexico

DESERT ROSE TRADING Factory Outlet
Wyoming
Mon - Sat 10a - 5p
www.desertrosetrading.com • 821-6723-8001 Wyoming Blvd. NE Suite B-5 • Open Quarter

dorje designs



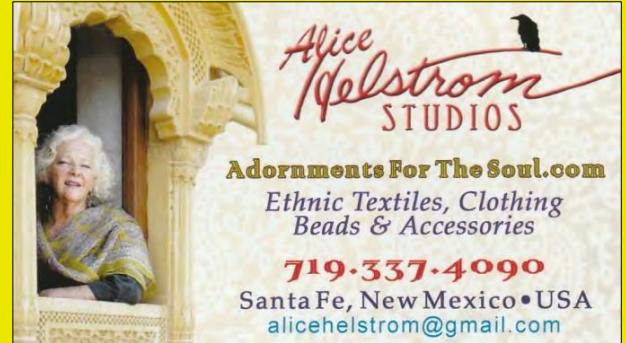
Style, soul, and history . . .
all in a single piece of adornment.

Anna Holland designs unique ethnic jewelry and tribal jewelry using contemporary, antique, and ancient beads and artifacts. Her handcrafted necklaces, bracelets, and rings are all one-of-a-kind treasures, collected and worn by women and men around the world.

<http://www.dorjedesigns.com/>
info@dorjedesigns.com



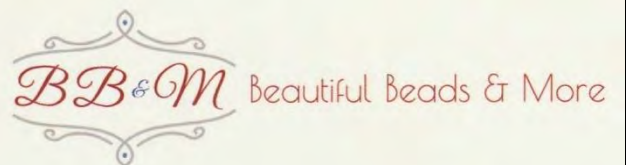
Alice Helstrom Studios



Visit our new store:

Travelers Boutique
at Santa Fe Place
(formerly The Design Center)
418 Cerrillos Road, Santa Fe, NM

10% discount for BSNM members



Barbara E. Marcus, Artist

www.beautifulbeadsandmore.com

email: beautifulbeadingandmore@gmail.com / phone: 505-228-7275

Jerome Nuñez
Owner

A FEW OF MY FAVORITE BEADS
Seed Beads • Delicas
Swarovski Crystals & Pearls
Fire Polish, Daggers & More

10137 Edith Blvd. NE
Albuquerque, NM 87113

(505) 974-1645

No additional discount for BSNM members

Beads • Findings • Classes



*The
Beaded
Iris*

(505) 299-1856
1512-F Wyoming Blvd. NE (N of I-40 at Constitution)
Albuquerque, NM 87112
www.thebeadediris.com

10% discount for BSNM members



Baskets of Africa.com
info@basketsof africa.com


1-505-323-2315 – Local
1-800-504-4656 – Toll Free

Shop the Warehouse:
By Appointment Only


1714 Eubank Blvd NE
Albuquerque, NM



15% discount for BSNM members



Beads, Jewelry &
Handicrafts of the World



Voted Albuquerque's Best Bead Shop!

Robert Spindler - owner

4008 Central Ave SE
Albuquerque, NM 87108 505-260-1121

Mon-Sat 11-6 Sun 12:30-4:30
www.stonemountainbeadgallery.com

20% discount for BSNM members

New Mexico Bead Company
4111 Louisiana Blvd NE
Albuquerque, New Mexico 87109-1862
505-243-2600 / 1-800-687-2701




Cynthia A. Romero
Tax Preparation & Planning
Bookkeeping & Payroll Services


(505) 296-0521
(505) 263-3646
Romeroill@msn.com

Member NATP

MONDAY-FRIDAY 10 A.M.-5:30 P.M.

JEWELERS REPAIR SHOP, LLC
Gold & Silver Repair
Loose Diamonds & Colored Stones
Custom Work & Gifts Items

(505) 266-9057
CHUCK & JOAN & CRAIG ALDRICH
7101 MENAUL N.E., SUITE A • ALBUQUERQUE, N.M. 87110
JRS1998@GMAIL.COM



9004 Menaul Blvd NE, #11
Albuquerque, NM 87112
505-798-0978

Owner: Elizabeth Sands (BSNM member)
easands@msn.com

Procedure for Submitting Articles for Publication

Producing a quality monthly publication as well as maintaining an up-to-date website and Facebook page is not an easy task. We have several people who work hard to ensure that our members have the most timely and accurate information possible. **But these tasks take lots of time and can't be done properly without the assistance of our members.** Please remember to follow these procedures when submitting information to be shared with the general membership:

- Send all information to beadsocietynm@gmail.com
- Please send just one topic per email and be sure to include the topic in the subject line and indicate that the topic is for publication.
- Do not send articles or information as a response to another email; send a new, separate email.
- Be sure that any artwork, etc., you send is copy-ready in a format that can easily be downloaded and copied – preferably as an attachment (JPG, TIF, or PNG, or incorporated into a Word document).
- Please send complete information. The members of the Communications Committee are not mind readers. ☺ Please provide full names of persons, full addresses and contact information, dates and times, etc.
- Information to be included in the Newsletter MUST be received no later than the 20th of the prior month. Information received after that date will be shared via social media and on the BSNM website, and used for **the following month's publication if appropriate.**

2023 Board of Directors

The Board of Directors currently meets in person on the second Tuesday of the month.

Members are welcome to attend.

President	Barbara Rosen
First Vice President - Special Events and Workshops.....	
Second Vice President – Programs.....	Pat Verrelle
Treasurer	Deb Cole
Secretary	Helen Yackel
Membership Chair	Deb Cole and Barbara Rosen
Newsletter Editor	Jill Bartel
Volunteer Coordinator.....	
Member-at-Large	Laurye Tanner
Past President.....	Pat Verrelle
Webmaster.....	Amanda Archuleta
Social Media Manager	
Photographer.....	Pam Troutman
Historian	
Meeting Coordinator	Claudette Jaramillo
Membership Recruiter.....	
Fiber Arts Council Representative	
Fiber Arts Education Committee Representative	Elizabeth (Liz) Reisinger

Copyright © 2023 Bead Society of New Mexico. All rights reserved.

Address: Bead Society of New Mexico, P.O. Box 91655, Albuquerque, New Mexico 87199

Website: www.beadsocietynm.org

Facebook: <https://www.facebook.com/BeadSocietyNM/>

Contact email: beadsocietynm@gmail.com

You are receiving this newsletter because you opted in at beadsocietynm.org.