



BSNM Newsletter

February 2022

The mission of this newsletter is to inform our members of the activities, events, and classes in the local beading community and to provide a forum where members can share beading knowledge and techniques.

In This Issue

Message from the President
Upcoming Events
Renew Your Dues
Paula Adams Estate
February Raffle Basket
Congratulations
Fiber Arts Fiesta 2022 Info
Gala Wrap Up
Wild Hearts Gallery
Chinese New Year
Support Our Local Businesses
Beading Groups
Gem of the Month
Beading Storage Ideas
Tips on Organizing Your
Jewelry Studio Space
Placitas Library Call for Entries
Museum of Beadwork Call for
Entries
Art Exhibits
Keep in Your Thoughts
BSNM Financials Available on
Website
2022 BSNM Calendar
Procedure for Submitting for
Publication
2022 Board of Directors

This newsletter welcomes new ideas from members and solicits articles and items of interest. Any special events taking place in your life (birthdays, anniversaries, condolences needed, new job, moving, births, weddings, awards, trips, transitions, etc.)?

All manuscripts are subject to editing. The editor does not assume responsibility for the accuracy of information contained in the articles received.

Please send all contributions for the newsletter to the editor in care of the Bead Society of New Mexico.

From the President

Dear Members,

As in years past, our **annual Gala** was a success! Nearly 25 members attended the January meeting, bought raffle tickets, ate delicious food, and had lots of fun. There were lots of fun items to bid on; everything from beads to spa treatments! We raised \$465.21 for the Bead Society. A big thank-you to everyone who donated items and who purchased raffle tickets.

Congratulations to Claudia Ross and Deb Cole for winning first and second place, respectively, in the 1920s costume contest. All the entries were great! And **congratulations to Pam Troutman and Laurie Tanner** for winning first and second place, respectively, in the jewelry contest. And thanks to our judges, Betty Smith and Jill Bartel.

We will be busy at our **February monthly meeting**:

- Attending members will vote on their favorite of the submissions to the "4x4x4 metallics" challenge for the education display at the 2022 Fiber Arts Fiesta.
- We will have our **annual Bead Swap!** Remember, your dues must be paid for 2022 to participate. **Please bring a cloth to cover your wares until we get to the swap portion of the meeting. And, please, no buying before the swap begins.**

Due to COVID, Liz Sands class, **"Sweetheart" pendant and earrings**, has been changed to Saturday, March 5 from 1:00 pm to 5:00 pm at Heights Cumberland Presbyterian Church. The class fee is \$55 and the kit fee is \$45.

Carolyn Bleil's **"Flowing River" cuff bracelet class** will be Saturday, February 12 from 1:00 pm to 5:00 pm at Mama's Minerals. The class fee is \$45 and the kit fee is \$55.

Fiber Arts Fiesta:

- Entries for the beadwork challenge are due February 1st.
- Don't forget to complete and submit your item for "4x4x4 metallics" challenge (for BSNM's portion of the education display) to either the Cherry Hills Library on February 4 or the February general meeting.
- Entries for the White on White+1 challenge are due March 1st.

At our **March general meeting** Diane Castillo, who will be teaching a class in April, will give a short presentation on wire weaving. We will also be making "doo-dahs" for Fiber Arts Fiesta.

See Upcoming Events in this newsletter for details on the classes with Liz Sands, Caroline Bleil, and Diane Castillo.

Please renew your annual membership. The Bead Society needs your support so that we can have these wonderful classes and presentations. If you have not already paid your 2022 dues, please bring your check, credit card, or cash to the February meeting.

Stay calm and bead on!

Barbara Rosen, BSNM President, 301-351-3303, beadsocietynm@gmail.com, www.beadsocietynm.org, www.facebook.com/BeadSocietyNM/



Upcoming Events

February 4

Fiber Arts Challenge Drop-off

Friday, February 4, 2022 1:00 pm to 4:00 pm
Cherry Hills Library, 6901 Barstow St NE, Albuquerque
(about one block east of the intersection of Wyoming and San Antonio)

Liz Reisinger and Mary Ellen Merrigan will be at the Cherry Hills Library to take your entries for the "4x4x4 metallics" challenge for BSNM's portion of the Fiber Arts education display.

February 9

Board Meeting

Wednesday, February 9, 2022 11:30 am to 1:30 pm

The Board will meet to conduct the business of the bead society. Board members, please plan to attend.

February 12

Flowing River Cuff Bracelet Class (2 parts)

Saturday, February 12, 2021 1:00 pm to 5:00 pm
Mama's Minerals, 800 20th St NW, Albuquerque

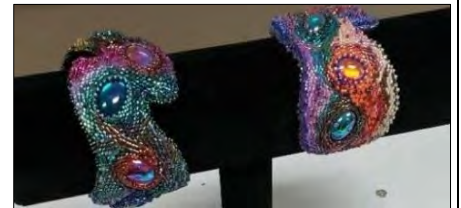
BSNM member and retired national instructor Caroline Bleil will teach this bead embroidery class. Caroline will be presenting her own technique of "Peyote Pavé" with this cuff bracelet.

Class fee: \$45

Kit fee: \$55. Kit includes vintage German glass cabochons (3 each of two colors – orange/red and green/purple); delicas in 27 colors to match or complement the cabochons; size 15 seed beads in 5 colors; beading foundation with pattern already drawn on it for placement of cabochons; ultrasuede backing; aluminum bracelet blank; small tube of E-6000 glue

Students need to bring: size 11 needle, either short or long; thread, black – either One-G or 6-lb Fireline; scissors with sharp point; bead mat; white glue; Suggested: pair of pliers to pull needle through the edge when doing edging and small quilting clip to clip the two and three layers together while white glue dries

Class size is limited. **Masks are required.**



February 22

General Meeting

Tuesday, February 22, 2022 6:00 pm to 8:00 pm
(set-up, social time, and buying raffle tickets beginning at 5:30 pm)
Heights Cumberland Presbyterian Church, 8600 Academy Rd. NE

We will have a brief business meeting and then conduct our annual **Bead Swap! Please bring a cloth to cover your wares until we get to the swap portion of the meeting. And, please, no buying before the swap begins.**

Your membership must be up to date to participate in the swap.

Don't forget to **bring your entry for the "4x4x4 metallics" challenge.** (We will vote for a favorite and there are prizes!)

Masks are required. We must wipe down the tables in the meeting room and must be out of the room by 8:30 pm.

March 5
new date!

Sweetheart Pendant and Earrings Class

Saturday, March 5, 2022 1:00 pm to 5:00 pm
Heights Cumberland Presbyterian Church,
8600 Academy Rd. NE
Education Building, Room 402

BSNM member Liz Sands will teach this beading and freestyle bead embroidery class.

Class fee: \$55

Kit fee: \$46. Kit includes one 28mm focal piece; glass flower beads (various sizes and colors); teacup beads; size 11 seed beads in red and gold; size 15 seed beads in red and gold; size 8 seed beads in red, pink, and white; white pearls; 3mm Czech fire polish beads; interface and backing; cording for necklace; two ear wires; and two head pins.

Students need to bring: 6-lb. FireLine in crystal; glue (Aileen's tacky glue or E-6000); size 11 and 12 beading needles; scissors; wire cutters; round-nose pliers; flat-nose pliers; work surface (such as a bead mat); beading light and extension cord; toothpicks

Class size is limited. **Masks are required.**



Upcoming Events

March 22	<p style="text-align: center;">General Meeting</p> <p style="text-align: center;">Tuesday, March 22, 2022 6:00 pm to 8:00 pm (set-up, social time, and buying raffle tickets beginning at 5:30 pm) Heights Cumberland Presbyterian Church, 8600 Academy Rd. NE</p> <p>We will have a brief business meeting –including a short wire-weaving presentation by Diane Castillo – and then we will make “doo-dahs” (bracelets and earrings) for the Fiber Arts Fiesta. These doo-dahs will be sold at the Fiesta for \$5 each to benefit Roadrunner Food Bank.</p> <p>You need to bring: chain-nose pliers, round-nose pliers, wire cutters, memory wire cutters (if you have them), crimping pliers (if you have them)</p> <p>Also bring any findings (head pins, ear wires, lobster claw clasps), stringing material, and beads you want to make with or donate.</p> <p>Masks are required.</p> <p>We must wipe down the tables in the meeting room and <u>must</u> be out of the room by 8:30 pm.</p>
April 14-16	<p style="text-align: center;">Fiber Arts Fiesta 2022</p> <p style="text-align: center;">Friday-Sunday, April 14-16, 2022 New Mexico State Fairgrounds, Manuel Lujan Building</p> <p>BSNM finds sponsors for the awards for the beaded entries; and provides volunteers to staff the bead exhibits, help out as rovers and booth sitters, and serve as instructors in classes attended by the public. We will have volunteer sign up lists at the next few general member meetings. It is a great way to meet new people, reconnect with old acquaintances, and be thoroughly inspired by the creativity that abounds at the Fiesta.</p> <p>Read the details about the BSNM education display and competitions in this newsletter. If you have any questions, please contact Liz Reisinger at lizreisinger1@gmail.com or (505) 977-3990</p>
April 23	<p style="text-align: center;">Wire Weaving Class</p> <p style="text-align: center;">Saturday, April 23, 2022 1:00 pm to 3:00 pm Mama’s Minerals, 800 20th St NW, Albuquerque</p> <p>Diane Castillo will teach this wire weaving class. She is the owner and jeweler for DTC Southwest Designs. Diane has been designing unique, artistic jewelry for over 10 years. Her work combines a blend of intricate wire weaving and the use of gemstones and beads to accentuate the full artistic expression of each piece.</p> <p>Have you ever wanted to try out wire weaving? Or have you thought about how wire weaving might add to your existing artistic talents? This 2-hour basic wire weaving class will cover types and characteristics of wire (including how/where to purchase), followed by practice in two basic wire-weaving techniques (coil, 3-2 weave, and variations), and the creation of a silver wire-weave heart pendant with an amethyst round, which participants will take home. If time allows, additional weave patterns will be practiced. Instructor will demonstrate and provide in a step-by-step directions and written instructions will be provided. Examples of other weave patterns will be shown in completed works by the instructor, some available for purchase. This class is for the beginner and assumes little to no knowledge of wire work.</p> <p>Class fee: \$65.</p> <p>Kit fee: \$20. Kit includes enough wire to practice weaves and patterns and to complete one heart pendant with amethyst round bead (and enough to complete 2nd heart pendant without bead at home). (If participants choose to purchase materials rather than kit, please bring to class one packet of 20-gauge dead-soft silver-plated wire; one packet of 26-gauge dead-soft silver-plated wire; and one 4mm drilled round bead.)</p> <p>Students need to bring: Flat needle-nose pliers (not ridged); round-nose pliers; wire cutters (instructor will bring extra); small scissors; flat 12” ruler; small cotton cloth (wash cloth or scrap t-shirt). Optional: metal file.</p> <p>Class size is limited. Masks are required.</p>
June	<p style="text-align: center;">Lariat Necklace and Earrings Class</p> <p style="text-align: center;">Date, time, and location TBD</p> <p>BSNM member Nan Card will teach this gorgeous stringing project. More details to come! Class size is limited.</p>



Renew Your Dues

A friendly reminder to renew your annual membership to continue receiving the full benefits from BSNM (such as buying and selling at the annual swap meet; reduced-price classes; special sales from our business members; and field trips). We need your support this year for the future of the Bead Society.

Cost is \$35 for individual membership, \$45 for household membership, \$55 to \$200 for business membership (depending on desired level).

You can renew with a credit card on our website, www.beadsocietynm.org/. (This is a secure website.)

Or mail your check to:

Bead Society of New Mexico
Attention: Treasurer
P.O. Box 91655
Albuquerque, New Mexico 87199

Paula Adams Estate

Paula Adams' beautiful beaded amulet necklaces are for sale at The Beaded Iris. All proceeds go to Paula, who is in assisted living in Albuquerque. Paula taught beading at the original Poppy Fields. Her attention to detail is very evident in her work.



February Raffle Basket

Be sure to buy your raffle tickets for a chance to win the **Beader's Passion raffle basket**. Red is the color of passion, and we are all passionate about beads! Feed your love of beads with this collection of red beads, pendant, and other items. (Total worth is at least \$75.)

This basket includes:

- Vintage Swarovski crystals
- Czech glass beads, seed beads, and glass pearls
- Chinese glass beads and crystals
- African trade beads
- Strand of Indonesian recycled glass beads
- Tagua nut beads (dyed)
- Garnet chips
- Strand of coral chips (dyed)
- Mountain jade beads (dyed)
- Long freshwater pearl (dyed) necklace
- Artisan-made glass pendant
- Pewter toggle clasps
- Flat-nose pliers
- Loop-making pliers
- Vinyl project/tool bag with handles
- Metal storage tin

(Portions of this raffle basket were donated by Jill Bartel, Pam Troutman, and Pat Verrelle.)

Congratulations

Congratulations to Bobbie Yoakum for receiving third place in the Seed Bead category in the Fire Mountain 2021 Beading Contest. Bobbie teaches immediate and advanced beading at The Beaded Iris in Albuquerque.



BSNM Challenge for Fiber Arts Education Display

Due February 4, 2022

For this challenge we are looking for ways that metallics can be used individually and in combination with each other – how they complement or contrast each other. We are not necessarily looking for finished jewelry. “Color Fantasy” is the theme – whacky, weird, and wild. This is your fantasy!

Due to space limitations for our display, pieces must be kept to a **size limit of 4”x4”x4” (maximum length, width, and height)**:

- Any individual or combination of metallics (gold, silver, copper, bronze, gunmetal, etc.) can be used; and if desired, pink can also be included. (No other colors are allowed as the other guilds are using the other colors.)
- Pieces must incorporate the overall display theme of “Fantasy.”
- Any technique (such as bead weaving, stringing, mixed media) or material (such as glass, metal, fabric, leather) may be used.

Pieces must be submitted on or before the general meeting on February 22, 2022, for consideration by the BSNM review team. Be sure your piece is clearly marked with your name, email address, phone number, and a description of the piece. **Liz Reisinger and Mary Ellen Merrigan will be at the Cherry Hills Library (6901 Barstow St NE, Albuquerque) on Friday, February 4th from 1:00 pm to 4:00 pm to take your challenge pieces.**

This challenge is an internal BSNM challenge and is not an official part of the Fiber Arts Fiesta 2022. Prizes will be awarded based on popular vote at the February meeting.

The Bead Society of New Mexico has been asked to create these pieces for the Albuquerque Fiber Arts Council (AFAC) Education Display titled “Color Fantasy.” The display will consist of tables in a wheel-spoke arrangement with each AFAC guild providing items that reflect their assigned color. BSNM will provide items reflecting metallics and how they are used in various combinations.

Contact Elizabeth Reisinger at lizreisinger1@gmail.com or (505) 977-3990 if you are interested in participating in this challenge or if you have questions about the challenge.

Fiber Arts Educational Display

Liz Reisinger is heading up the committee to create BSNM’s educational display for the 2022 Fiber Arts Fiesta. The committee will have its **next planning meeting on Monday, February 7, 2022 at 6:00 pm via Zoom.**

Albuquerque Fiber Arts Council Fiesta 2022

Friday-Sunday, April 14-16, 2022

New Mexico State Fairgrounds,
Manuel Lujan Building

Theme: Fiber Fantasies

Registration for entries begins December 1, 2021. Entry forms for the Bead and White On White+1 competitions are posted on the Albuquerque Fiber Arts Council (AFAC) website: <https://abqfiberartscouncil.org/>. Hover over the “Fiber Arts Fiesta 2022” tab to view the drop-down menu. Click on the desired competition. Choose the “Member” entry form.

Bead Society Sponsored Bead Challenge

Open to all, eight beadwork categories with two cash awards in each category - \$50 for 1st place and \$25 for runner-up. Your work must be completed after March 1, 2019 and is **due by February 1, 2022**. Pieces will be juried except for the two youth categories.

Categories:

- B101: Bead embroidery
- B102: Woven beads off/on loom
- B103: Beads made by artist
- B104: Beads NOT made by artist
- B105: Beaded non-jewelry
- B106: Metal jewelry
- B107: Youth 12 years or under as of 1/15/22
- B108: Youth 13-18 years of age

Instructions on how to enter can be found at <https://abqfiberartscouncil.org/fiber-arts-fiesta-2/fiber-fiesta-2022/call-for-entry/>

Special Category Challenge - White On White + One

Create a work using any or many shades of the color white (ranging from white, lead white, ivory, silver, whitewash, isabelline, chalk, through beige), plus one other color. The +1 color can be any value of one color, ranging from very dark to very light. Multiple values may be used if it is one color. Jurying will be by persons designated by the AFAC. No entry fee required for this challenge. Entrants are limited to one entry. **Deadline for entering is March 1, 2022.**

Instructions on how to enter can be found at <https://abqfiberartscouncil.org/fiber-arts-fiesta-2/fiber-fiesta-2022/challenge-white-on-white-plus-one/>

Color Fantasy Educational Exhibit

This is an educational display featuring a color wheel at the hub. Each participating guild chose a color(s) and will create displays that will radiate from the color wheel. The Bead Society of New Mexico will work with the metallics – gold, silver, copper, and bronze, with a touch of pink. This will be a wonderful opportunity to create fantastical beaded projects while encouraging the exploration of color!

Gala Wrap-Up

photos by Pam Troutman

A good time was had by all at our annual gala and fundraiser! Several members really got in the spirit of the evening and came in 1920s-style costumes. Claudia Ross won first place (\$35) in the costume contest and Deb Cole won second place (glass sculpture).



Liz Reisinger, Pam Troutman, Linda Gregory, Collette Chamberlain, Claudia Ross, Deb Cole, and Pat Verrelle show off their stylish 1920 threads.



Claudia Ross and Deb Cole won first and second place, respectively, in the costume contest.
(Love that cigarette holder, Claudia!)

Pam Troutman and Laurye Tanner won first (\$35) and second (glass sculpture) place, respectively, in the jewelry contest.



Necklace by Laurye Tanner made with silver-lined bugle beads and necklace by Pam Troutman made with black, grey, and white seed beads using a dimensional technique.

Pat Verrelle was presented with a bracelet and a book of photos in honor of her hard work and dedication as president for the past 3 years. Board members donated beads and the bracelet was designed and strung by Jill Bartel. Using Shutterfly (an online company for creating custom photography products), Jill used photos of BSNM events and wrote an accompanying story.



Jill Bartel presenting Pat Verrelle with her gifts.
(Pat loved her bracelet and book!)

A big thank you to everyone who donated items for the raffle and to those who bought tickets for the plethora of raffle items. And congratulations to everyone who won those items.

Jill Bartel: glass salt & pepper shakers with silver-plated tops; box of Japanese glass pearls (mixed sizes)

Nan Card: Silver Lining raffle basket; bead spinner; stained glass wall hanging; bag of miscellaneous beads

Collette Chamberlain: bag of pens and pencils; necklace (donated by Diane Kirkpatrick)

Deb Cole: neck stand with strands of amethyst, **moonstone, and rutiled quartz (donated by Mama's Minerals)**; amethyst geode angel with mica wings **(donated by Mama's Minerals)**

Anita Collins: necklace; beaded cholla suncatcher

Jeanette Easley: Santo Domingo silver earrings

Patti Farley: Dooney & Burke wristlet; box of 8mm Japanese glass pearls; 2 sets of Krobo bead bracelets (donated by Baskets of Africa)

Linda Gregory: gray necklace and earrings

Mary K. Phillips: Keurig thermal carafe

Liz Reisinger: 2 long strands of Krobo beads (donated by Baskets of Africa); 3 cork-inlaid cuff bracelets; shadow box with shirt signed by Brian Urlacher; necklace (donated by Diane Kirkpatrick); three 1-lb bags of seed beads (donated by Stone Mountain Bead Gallery); macramé board and large tote bag (donated by The Beaded Iris)

Barbara Rosen: 2 long strands of Krobo beads (donated by Baskets of Africa); carved and inlaid wooden tray; copper and clay wall hanging

Claudia Ross: 2-strand turquoise necklace; spa bath set; set of 3 red candles; full-body aromatherapy set; pear-shaped crystal pendant, faceted round crystal bead, and strand of crystals (donated by The Beaded Iris)

Laurie Tanner: 2 red seed bead necklaces; 2 Indian agate necklaces; Chinese-style purse with cloisonné bead handle

Pam Troutman: \$20 gift certificate (donated by Stone Mountain Bead Gallery); hand-painted rock tea-light holder

Pat Verrelle: ceramic tabletop nativity, one set of Krobo bead bracelets (donated by Baskets of Africa); large black Coach purse; dichroic glass pendant necklace; necklace (donated by Diane Kirkpatrick); **"bead-aholic" T-shirt**

Helen Yackel: 2 Paula Adams books (*Cascade Necklaces* and *Netted Lace Amulet Bags*), kazuri beads, and earrings (donated by The Beaded Iris); **"Pretty in Pink" pearl knotting kit** and gift certificate for knotting lesson (donated by The Beaded Iris); large African basket with handle (donated by Baskets of Africa)

Wild Hearts Gallery

4th Annual Jewelry Showcase
Saturday, February 5, 2022
1:00 pm to 4:00 pm



Wild Hearts Gallery in Placitas (221-B, NM Highway 165) is holding their fourth annual jewelry showcase – **just in time for Valentine's Day!** Stop in to purchase something for yourself or your loved one.

Sandy Johnson and Geri Verble are the featured jewelers in the gallery from February 1 through 27. **Geri says**, "I am delighted to let you know that I have received a beautiful box of tagua nuts from Bogota, Colombia! I am in the process of creating some colorful, fun pieces of jewelry that are eco-friendly and **very lightweight.**" Finished pieces of her tagua nut necklaces can be seen on **Geri's website** – www.tribalbear.com – under "Tagua Nut Jewelry."

The gallery is open Tuesday through Friday 10:00 am to 4:00 pm, Saturday and Sunday 10:00 am to 2:00 pm.

Webmaster

Welcome to our new webmaster, Amanda Archuleta. She is a new member and the daughter of BSNM secretary, Helen Yackel. Amanda will receive a stipend for her work as webmaster. The Board is working with our Amanda to clarify what duties we expect of her.

Chinese New Year

Tuesday, February 1, 2022
Year of the Tiger

Like their eponymous zodiac animal, people born in years of the Tiger (1926, 1938, 1950, 1962, 1974, 1986, 1998, 2010, and 2022) are vigorous and ambitious, daring and courageous, enthusiastic and generous, self-confident with a sense of justice and a commitment to help others for the greater good. Tigers are courageous and active people who love a good challenge and adventure in life.

Wear red today – it's associated with luck and prosperity.



Support Our Local Businesses

A Few of My Favorite Beads: *We have all 22 colors of One G thread in the 250-yard spools.* Call (505) 974-1645 or come by to see our latest beads.

Baskets of Africa: If you don't see exactly what you want on our website, contact us and we'll search the baskets in our warehouse to see if we can find just what you're looking for. Thank you for supporting these fantastic weavers and their families. (505) 323-2315 or go to info@basketsof africa.com.

Beadweaver of Santa Fe: We are still offering a 10% discount to BSNM members.

The Beaded Iris: We are offering 10% discount to BSNM members, as well as our punch cards for future savings. **Also check out our new classes!** Come on into the store and rediscover all the beads, crystals, delicats, findings, thread, and other products you need to complete your beautiful project. **Open beading on Wednesdays.** Store hours are Mon. through Thurs. 10am to 5pm; Fri. through Sat. 10am to 4pm. We will be glad to make an appointment if these hours do not accommodate your schedule or special needs. To schedule an appointment, call 505-299-1856 or email us at beadedirisstore@aol.com.

Glorianna's Beads (Santa Fe): 70 West Marcy Street, Suite B. Phone: (505) 982-0353. Open Tues-Wed and Fri-Sun 10:30am to 4pm.

Mama's Minerals: Check out our special Valentine-themed stone jewelry and gift items. You can buy beads in bulk every day for up to 25% off. Larger discounts up to 30% off our newly restocked clearance beads. **Mama's Minerals** proudly supports local artists, featuring handmade consignment jewelry by Karl Brazzil and Claire Sweeney. www.MamasMinerals.com.

Meltdown Studio: New year, new skills. No previous experience required to take our classes. Check out our current (cigar-band ring, hollow metal beads, and more) classes at <https://www.meltdownstudio.com/group-classes-1>.

New Mexico Bead Company: New Mexico Bead Company (formerly New Mexico Bead and Fetish) currently only has online sales. They have stone beads, seed beads, fetishes, crystals, and more available on their website: <https://www.nmbead.com/>.

Santa Fe Jewelers Supply: Open 9:00am to 5:00pm. Curbside pickup, mail order, or visit our showroom today! Order on our website at www.sfjs.net day or night. Phone: 505-988-9157.

Stone Mountain Bead Gallery: We're open Mon. through Sat. from 11am to 6pm; Sun. 12:30pm to 4:30pm. Call 505-385-2200 to arrange contactless pickup. **30% off on glass beads and 20% off other items for BSNM members.** We have Swarovski crystals! Also, modern chevron beads hand made by Art Seymour.



Thomason Stone Supply: Store hours are Mon. through Sat. 9am to 5pm. You can place an order by calling us at 888-353-9934 or 505-268-9934, or by filling out a contact form on our website, <https://www.thomasonstonesupply.com/>.

Thunderbird Supply Company: Sale on red beads and wire through February 3. Valentine's Day Super Sale on Monday, February 14: Mail Order Only. Sale begins at 12am and ends at 11:59pm MTN. See our website (<https://www.thunderbirdsupply.com/>) for online and in-store specials. Store hours: Mon.-Fri. 9am-6pm; Sat. 10am-5pm.

Treasures of the Gypsy/Gypsy Raven: Treasures of the Gypsy Show Room is open by appointment, as well as for classes. Please contact Pamela Armas to schedule your appointment at 505-847-0963, or email her at gypsytreasures@cs.com

Beading Groups

Bosque Farms: Do you live in the Bosque Farms area? Join BSNM member Kathy Jost at the Bosque Farms Community Center for the **BFCC Bead Group on the 2nd and 4th Thursday of the month from 2:00 pm to 5:00 pm.** Bosque Farms Community Center is located at 950 N Bosque Loop in Bosque Farms, New Mexico. Phone: (505) 869-5133.

Placitas: Several members of BSNM meet **each Thursday from 12:30 pm to 3:30 pm at the Placitas Senior/Community Center** at 41 Camino de la Huertas in Placitas, New Mexico. Come early and have lunch with some of us!

News about The Beaded Iris

The shopping center at Wyoming and Constitution, where The Beaded Iris is located, was recently purchased by an upscale investment group out of Denver. Their plans for the shopping center are unknown at this time. However, store owner Dannelle Garcia-Grundlach will be sending the company a letter of intent to stay. **Let's hope that The Beaded Iris will stay.** The store, in various incarnations (first Southwest America, then Bead Dame, and finally The Beaded Iris), has been in that shopping center for over 50 years. *[Editor's Note: I went to high school with the daughter of the owners of Southwest America.]*

Dannelle has also bought a hepa filter air purifier for the front beading room – so everyone will feel more comfortable about spending time there.

So stop on in at The Beaded Iris. Feed your passion for seed beads or Czech glass beads or crystals or whatever gets your creative juices flowing!

Gem of the Month – Amethyst

The name **amethyst** comes from the Greek **a** (“not”) and **methustos** (“to intoxicate”), a reference to the belief that the stone protected its owner from drunkenness. The ancient Greeks and Romans wore amethyst and made drinking vessels of it in the belief that it would prevent intoxication. Why the stone was given this name is unclear, although its deep purple color resembles wine.

Amethyst is the world’s most popular purple gem. It occurs in a variety of hues from a pale slightly pinkish violet to a deep grape purple, depending on where it is found. It can form in large defined crystal points or in clusters of smaller terminations. Another typical and large form of amethyst occurs inside pockets (vugs) within volcanic rock, where an enclosed space has been created as the rock cooled. These formations have a greenish encrustation on the outside, and when split open reveal hundreds of amethyst crystals growing toward the center of the space. Entire pieces are available – and expensive – to buy; they look like crystal caves and can be as much as 3 feet (or more!) in size.

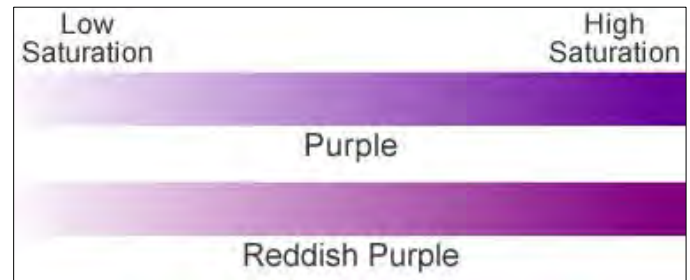


Amethyst from Brazil

Amethyst crystals grow slowly and the composition of the fluids delivering the iron and the silica needed for crystal growth can vary. The darkest color of amethyst forms when the largest amount of iron is incorporated into the growing crystal.

Due to its popularity as a gemstone in jewelry and ornamentation, several descriptive terms have been coined in the gem trade to describe the varying colors of amethyst. “Rose de France” is usually a pale pinkish lavender or lilac shade (usually the least-sought color). The most prized color is an intense violet with red flashes and is called “Siberian,” although these gems may come from Siberia, Uruguay, and Zambia. The highest-grade amethyst (called “Deep Russian”) is exceptionally rare, so when one is found, its value is dependent on the demand of collectors.

In more recent times, certain gems (usually from Bolivia) that show alternate bands of amethyst purple with citrine yellow have been named ametrine. The misleading name “Oriental amethyst” usually refers to purple sapphire.



This graphic illustrates two ranges of amethyst color. Purple and reddish purple amethyst occurs in saturations that range from a color that is barely perceptible to a color that is rich and vivid.

Today, much of the light amethyst is used to cut small calibrated stones for use in mass-market jewelry. Most of the premium reddish purple color amethyst is being used in high-end or designer jewelry. High-quality amethyst can be found in Siberia, Sri Lanka, Brazil, Uruguay, and the Far East.



Faceted amethyst

Amethyst has been prized since ancient times, used in royal jewelry such as crowns and scepters, and in the Old Testament book of **Exodus** it is mentioned as one of the stones in the breastplate of Aaron the High Priest. Amethyst was also used as a gemstone by the ancient Egyptians and was largely used in antiquity for carving intaglios. Beads of amethyst have been found in Anglo-Saxon graves in England. Ranking members of the Roman Catholic Church and Anglican bishops traditionally wear rings set with a large amethyst as part of their office. Until the 18th century, amethyst was included in the cardinal, or most valuable, gemstones (along with diamond, sapphire, ruby, and emerald), but since the discovery of extensive deposits in locations such as Brazil, it has lost most of its value. It is now considered a semiprecious stone.

Amethyst is the birthstone associated with February. It is also associated with the astrological signs of Aquarius, Pisces, Aries, and Sagittarius. It is a symbol of heavenly understanding, and of the pioneer in thought and action on the philosophical, religious, spiritual, and material planes.

This stone is popular as a purifying crystal, helping to ward off negative influences and protect from environmental stress. It is also said to calm the nervous system and the brain, easing headaches and migraines. Wear or carry amethyst to help calm

mental stress. Place it under your pillow to improve the quality of sleep. It also aids in cell regeneration (supporting your bones and joints) and is reputed to improve your skin.

According to crystal healing experts, amethyst emits a high vibration, infusing it with divine energy for purification, wisdom, balance, and tranquility. In crystal-healing layouts, place amethyst over the top of the head or on the third eye to expand conscious awareness. Eight pieces of amethyst placed around the body create a protective field. Amethyst is also believed to help ease fibromyalgia, high blood pressure, depression, fatigue, and insomnia; however, it is not a replacement for conventional medical advice.

Over and above the physical properties and benefits of amethyst, the stone's purple color is a natural tranquilizer. It is said to dispel rage, help manage fears and anger, and calm rage and anxiety. Other believed benefits of amethyst include the ability to alleviate sadness and grief and dissolving negativity.

Amethyst has a good hardness, and handling it with proper care will prevent any damage to the stone. Amethyst is sensitive to strong heat and may lose or change its color when exposed to prolonged heat or light. Polishing the stone or cleaning it by ultrasonic or steamer must be done with caution.

5 Beading Storage Ideas for the New Year

Katie Hacker
January 17, 2022

https://www.interweave.com/article/beading/5-beading-storage-ideas/?utm_campaign=Interweave%20Beadung%20%20Newsletters&utm_medium=email&utm_content=201338492&utm_source=hs_email

Every beader I know is constantly searching for the best system for organizing their beads and supplies. **We all agree that it's an evolving process that grows as our supplies and experience grows.** As the saying goes, "If someone tells you that you have enough beading supplies and you don't need any more, stop talking to them. You don't need that kind of negativity in your life." But seriously, it's possible to organize your supplies and make beautiful, beaded jewelry. Here are five beading storage ideas for the New Year.

1. Use Recycled Containers for Beading Storage

Tammy Honaman says, "Thankfully we are creative types and able to adapt many things not necessarily designed for our jewelry and beading studio organization. **I've been saving Talenti ice cream containers for a long time and finally, finally found the formula needed to remove their label.** Nothing against Talenti, their logo and label are actually cool, but I like **to see the beads I put into the jars.**" Learn Tammy's tips for removing labels in [Free How-To Bead Storage Solutions](#).

2. Be Organized, But Not Too Organized

I'm fortunate to have inherited a library card catalog for beading storage and organizing larger supplies such as beading thread, wire, and tools. **I'm okay with keeping the items loosely organized inside the drawers, because it's fairly easy to see what's inside at a glance.** If you require further levels of organization then you can sort things into small boxes inside the drawers. **Just don't get so wrapped up in the organizing process that you forget to have fun creating!**

3. Organize By Color

Edgar Lopez shares, **"I like to organize everything by color then arrange those colors side-by-side. It's easier for me when I can choose materials for a project.** Usually, I have the majority of things stored away in their containers. I keep the supplies in sight that I use most frequently. I do not like a cluttered workspace but prefer to have a lot of free space. **What is in sight are things that inspire me for whatever I'm working on at the moment."**

4. Use Modular Beading Storage

Many bead-storage and organization containers are made to accommodate different sizes of beads and supplies, with different boxes, bins, and trays that allow you to build your system as your beading stash grows. **I've moved most of my beads to these trays because the little boxes are easy to transport to and from my desk and they look tidy while in storage.** I used different sizes of boxes and bins from the same product line so they all fit together.

5. Designate a Creative Space

Kim Leahy has different workstations depending on **what she's doing.** She can be creative while developing a new kit at one worktable, for example, while keeping another area organized for filling online orders. **Most of all, she says, "Let's keep it real. Beading is fun!"** If you don't have a spare room where you can leave a work in progress, then keep a project going on a tray, card table, or someplace where you can jump right in where you left off.

However you decide to organize your supplies and your beading storage space, nearly everyone agrees that **it's best to start with a single step.** Spending 15 minutes a day will make a big difference and leave plenty of time for to get in the creative zone.



5+ Tips on Organizing Your Personal Jewelry Studio Space

Tammy Honaman

January 18, 2022

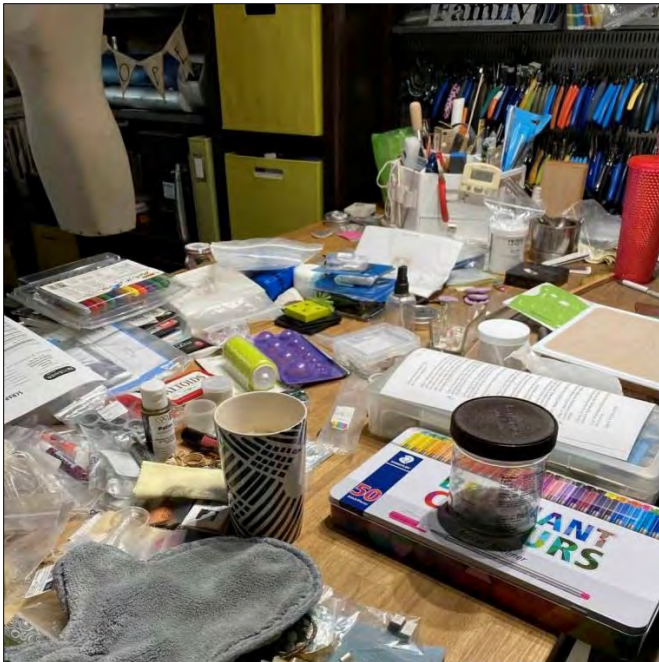
https://www.interweave.com/article/beading/organizing-jewelry-studio-space-tips/?utm_campaign=Interweave%20Beading%20%20Newsletters&utm_medium=email&utm_content=201893318&utm_source=hs_email

Spending time creating is a wonderful way to escape and enjoy some time alone, doing something you love. Simply tune out the world for a bit and immerse yourself in all of the supplies and materials you've been collecting in your jewelry studio. It's pure bliss when you can really create with abandon. And, sometimes, the simple pleasure of cleaning up can dust away those creative gaps we all face from time to time.

Honamess

When I'm on a path to create, no matter the reason, I tend to get a bit out of hand with the materials I pull out and the space I take over. And, that's nothing in comparison to the mess I leave behind as I move to my next greatest project ever!

Everywhere I look there are remnants of a past project, a previous passion, a long-forgotten favorite lampwork bead, spools of beading wire, an errant toggle bar, and so on. I even have a box of miscellany—pieces and parts that got scooped together when I had to do a photo shoot in my jewelry studio. Some days there is just not enough time! And really, who wants to spend creative time cleaning? It is a necessary, though, as we all know.



This is an extreme example but a perfect storm. Projects in process were overlapping and vying for space, new products had just been received, and I had just unpacked from a teaching session. The dust mitt and beverages remind me this was cleaning day!

After the Storm

Accomplishing a clean space takes planning ahead, a system, and some time. **That isn't to say the system can't change as your tools, beading materials, and jewelry-making supplies change.** We must always have room for more [insert your favorite material here]! No matter where you are in your creative journey, what your passion is, or how big your space is, we all have to face the music from time to time.

And I don't know anyone who was sorry after they completed a good cleaning day.



After the dust(ing) storm, I was able to set up for a video shoot and have space to work in!

My Top 5 Tips for Organizing Your Jewelry Studio Space

1. Determine how you approach a design then organize your space around that. As an example – **do you go for "red beads" or do you start with "size 8/0 seed beads"?** Your answer could help guide you to sorting by color or by type.
2. Label everything! It might take extra time but if you approach this in small bites, before you know it, the job will be complete (until your next shopping trip!) **and you'll have a system that can evolve.**
3. Find creative ways to expand your space. Use the walls, add a bookcase then fill with baskets; anything that works within the area you have and helps contain all the things.
4. Place your most-used supplies within easy reach. Scissors, thread, needles, magnification, beading scoops...**whatever your essentials are, place them near your work area or make them portable so you can bring them to your work area.**
5. Find creative ways to dress up your jewelry studio. **A cork board for your favorite "pins," a dress form to hang your latest creation, or a wall of beads.** Whatever it is that inspires you, find a way to fit it into your view.

Placitas Library Call for Entries

March 2022 Art Exhibit – Call for Artists

Exhibition dates: March 5 through 31, 2022

"Lost and Found: A Personal Interpretation"



Lost loves, lost opportunities, lost in space! New found knowledge, new found friends, or found objects!

Artists are encouraged to define and explore the experience of loss and the joy of new discoveries.

Whether your focus is on a personal or communal experience, consider employing repurposed, rescued and reclaimed materials to enhance your narrative with **materials that have also been "lost" and then "found."**

All mediums, of course, are welcome.

Submissions accepted:

December 1, 2021–February 13, 2022

Submission forms and detailed information can be found on the PCL website:

<http://placitaslibrary.com/programs/art-exhibits/call-for-artists/artist-submission/>

Please address questions to the Art Committee at PCL.art.committee@gmail.com

February 7 is National Wear Red Day

Put on your favorite red to raise awareness about **heart disease. It's the leading cause of death among American women and men, but 80 percent of cardiac events can be prevented.** Visit www.goredforwomen.org for the latest research and information about heart disease in women.

Placitas Library Call for Entries

April 2022 Art Exhibit – Call for Artists

Exhibition dates: April 2 through 28, 2022

"Turning the Pages...Art Inspired by Books"



In the digital age of "Kindle" reading and "Audible" listening, many of us yearn for the days of picking up a book and "Turning the Pages." There is something about the feeling and artfulness of holding a book, browsing through the beautifully illustrated art, and beginning the journey of reading. This is your opportunity to be inspired by expressing your art through literature.

Some resources to inspire that journey are:

<https://www.pinterest.com/lanalang/book-art/> and <https://www.pinterest.com/lindsayjwhite/old-books-into-art/>

Submissions deadline: February 25, 2022

Artwork/Exhibit Installation: April 1, 2022

Artists Reception: April 15, 2022

Exhibit Removal: April 29, 2022

Exhibit Coordinator: Geri Verble, gverb2@comcast.net

Submission forms and detailed information can be found on the PCL website:

<http://placitaslibrary.com/programs/art-exhibits/call-for-artists/artist-submission/>

Please address questions to the Art Committee at PCL.art.committee@gmail.com

Museum of Beadwork Call for Entries

<https://www.museumofbeadwork.org/pages/enter-the-stars?fbclid=IwAR246OHmt5OdwSI0GUqSxSJ1wWtve7ZKQu8Sv7xq1OBNSNvOMZOeSFcEVr4>



Join the Museum of Beadwork in their annual Collaborative Community Project!

How it works: Each year we ask artists to contribute a beaded item of a specific theme. We install these collected items in an exhibition highlighting the power of people coming together for the purpose of community and creation. The exhibition is then on display for roughly a year. Once finished, the individual items are used in fundraising efforts for the Museum supporting the staff, development, and programs of this community-based institution.

The theme for this year is "Enter the Stars" and we would like you to make and send in a beaded star that will be part of an installation exhibit in our gallery entryway. Help us decorate this space with a sky of stars. It will be our opening year, and we want to highlight every one of you that made this opening possible as the stars you are.



Image courtesy of Deborah Ryan

We invite you, no matter your experience, style, or technique, to make a star and send it to us.

Guidelines:

- **Stars can be anywhere between 2" in any direction to 10" in any direction.**
- As the stars will be hung, 3-dimensional is best, but we are not discouraging 2D as long as they do not fold under their own weight.
- Use of an armature, framework, or solid structure to bead upon is acceptable.
- Each star needs to have a loop of material or jumping at the top for them to be hung from.
- Found materials are acceptable but we ask that the stars are at least 70% beads.
- No color requirements.

- Original designs are preferred. It is up to the beader (you) to know whether a pattern you have purchased is donatable. Please also include the name of the designer so credit can be given where it is due.
- Feel free to send us as many as you like. In fact, the more the better!

Please mail them to us no later than May 1, 2022.

When mailing, please include:

- Your star(s).
- Your name, town/state/country, and age (if you wish to share).
- Whether or not you would like to be listed as a contributing artist.
- Mail to:
Museum of Beadwork
915 Forest Avenue
Portland, Maine 04103

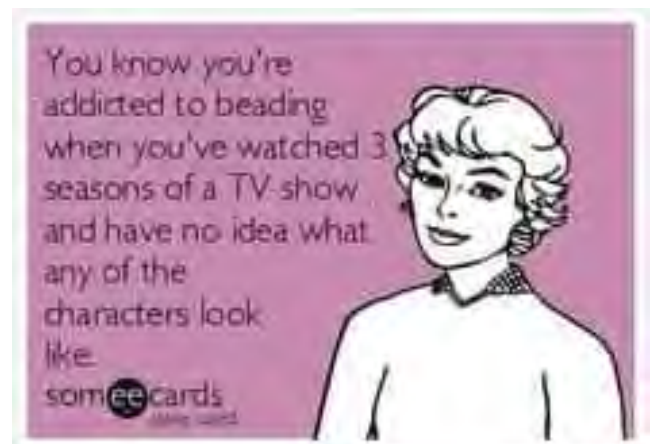
The final installation will largely depend on how many individual stars we receive.

Being in the entryway, this will be the first exhibit that visitors will see when they enter the Museum and with your help, we plan to make it shine!!

* Fine print, please read!

Upon receiving, the stars become the property of the Museum of Beadwork. They are intended to be on display at the Museum of Beadwork as an installation for roughly a year before becoming part of an annual fundraising effort for the MOB. Individual stars will not be returned.

All submissions to this project become the full property of the Museum of Beadwork and can be used by that institution in any lawful way including (but not limited to) publicity, marketing, publication, exhibitions, sale, etc. in perpetuity. All proceeds resulting from this project will go to support the Museum of Beadwork and its mission.



Tucson Show

January 29-31 thru February 1-6, 2022
Holidome & Gem Mall
4475 S Country Club Road
Tucson, Arizona 85714

Remember to pre-register for the February Tucson 2022 show and stay ahead of the crowd! Save time, don't waste it standing in line!

It's easy to pre-register online (<https://adiregisterme.com/login.php>) and receive your badges in the mail. Pre-registration closes January 14, 2022 at 5:00 pm CDT.

For discounts on the following hotels, contact Melissa Huang, 415-828-3688, melissahuang@gmail.com to book:

- Double Tree Suites by Hilton Tucson Airport
\$169 or \$179 deluxe suites
free shuttle to JOGS show (or 10-minute drive)
- Ramada by Wyndham Viscount Suites Tucson East
studio king or 2 queen beds with sofa pullout +
kitchenette + breakfast buffet for \$209
- Comfort Suites
studio suite with a king or 2 queen beds for \$139
free breakfast buffet
11.5 miles to downtown Tucson

Delta Airlines is offering a special discount for the JOGS Tucson Gem & Jewelry Show. Dates: January 21 through February 11, 2022. To get this discount, go to https://jogsshow.com/airline-discounts-for-jogs-tucson-gem-show/?utm_medium=news&utm_source=mgun-12-21-21&utm_campaign=mgun-12-21-21

Glass Exhibit at Museum of Indian Arts and Culture

May 1, 2021 through June 30, 2022

The Museum of Indian Arts and Culture
 710 Camino Lejo, Santa Fe, New Mexico
 (on Museum Hill)

Clearly Indigenous: Native Visions Reimagined in Glass is a groundbreaking exhibit of works in glass by 33 Indigenous artists, plus leading glass artist Dale Chihuly who introduced glass art to Indian Country.

Fundraiser for Barbara Butcher

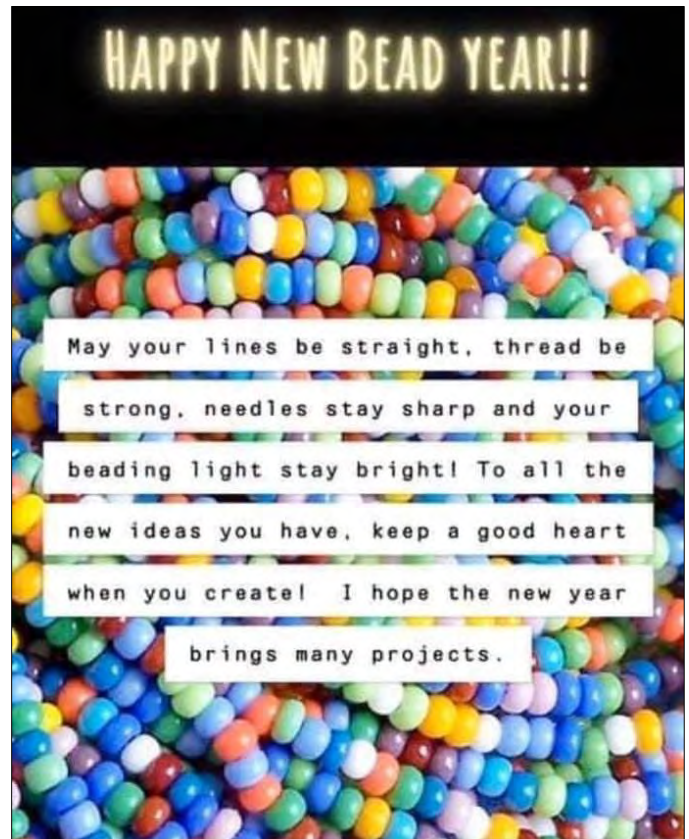
Barbara Butcher, who has been battling cancer, had a stroke earlier this year that left her with limited use of her right arm and leg. Consequently, she will probably need 24-hour assistance going forward.

To help combat this expense, Jerome Nunez of A Few of My Favorite Beads has volunteered to sell the leftover stock from Barbara's former store, The Beading Heart of Santa Fe. **Sales are cash only. All monies will go to Barbara for her medical expenses.**

You must make an appointment to purchase these beads. Please call Jerome at (505) 974-1645.

Jerome says he can accommodate appointments 7 days a week, beginning at about 11am, but says that Wednesdays are probably the best days.

All items are upstairs at Jerome's store (up a spiral staircase). If you are unable (or unwilling) to climb the stairs, Jerome said he is willing to bring boxes down to you – if you have an idea of what you are looking for.



Bead Fest 2022

August 17-20, 2022

Lancaster Marriott at Penn Square, Lancaster, PA

Please reach out to us at BeadFest@goldenpeakmedia.com for any questions or concerns.

♥♥♥♥♥♥♥♥♥♥♥♥♥♥♥♥
Happy Valentine's Day

Keep in Your Thoughts

Barbara Rosen, who recently had hand/wrist surgery
Pat Verrelle, who will be having a series of small surgeries in February

Liz Reisinger, who has a family member who is ill
Jamie Welles, whose mother had another stroke
Sally Moore, whose son passed away.

Barbara Butcher, former owner of Beading Heart of Santa Fe, who has been undergoing heavy chemotherapy and who requires additional care since her stroke

Indea Sanchez, who has been undergoing intensive chemo treatments for stage 5 gall bladder cancer

Teri Lawson, who is undergoing chemo and radiation treatments for breast cancer

If you would like to send a card or note of encouragement to any of these members, please address the envelope to them **in care of the Bead Society of New Mexico, P.O. Box 91655, Albuquerque, New Mexico 87199**, and we will ensure that they get your messages.

Happy Birthday

Sally Moore

Patti Farley – February 20

If your birthday isn't listed here, please let us know at beadsocietynm@gmail.com so we can wish you a Happy Birthday!

Get More Information on the BSNM Website

■ **Classes:** For classes taught by our business members and other non-BSNM-sponsored classes, go to <https://beadsocietyofnewmexico.wildapricot.org/Bead-Time> for dates, times, and descriptions.

To review class details and to register online, log in to the BSNM website with your email and password and go to the event page <https://beadsocietyofnewmexico.wildapricot.org/Meetings-Classes-and-Events>.

■ **Craft Shows and Other Events:** To see upcoming shows that our members are involved in, go to the Members Art Shows listing at <https://beadsocietyofnewmexico.wildapricot.org/Art-Shows>. Also, if you have an art show you are participating in, don't forget to send Teresa Kenyon (at beadsocietynm@gmail.com) the information and event link so we can include your event.

BSNM Financials Available on Website

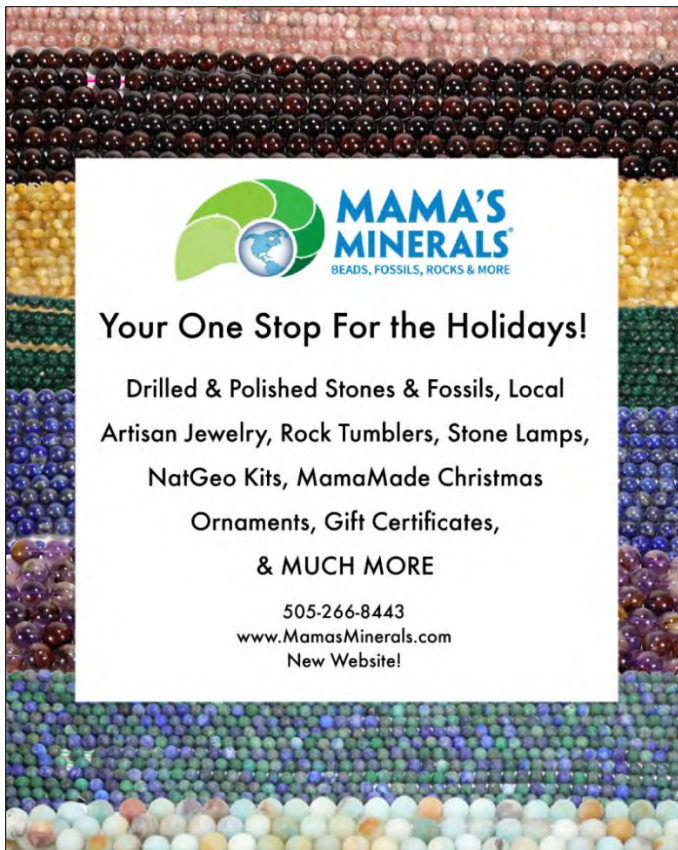
The Bead Society raised over \$465 during our January 2022 raffle. Thanks again to all of our sponsors and contributors, and to all of you who bought raffle tickets.


The monthly and annual financial reports for the Bead Society of New Mexico are now available in the "Members Only" section of the BSNM website (you must have/create an account on the website to access these documents). Go to www.beadsocietynm.org and log in to the website (click on "Log In" in the far upper right corner of the homepage; you need to register first if you haven't done so before). Hover over the "Members Only" section on the right end of the categories bar with your mouse and click on "Financials" in the drop-down menu. Then click on the document you want to read. (You may need to temporarily disable your pop-up blocker since the documents may open in a new window or tab).

2022 BSNM Calendar

The following is the calendar for BSNM meetings and events for 2022. Beginning July 2021, our general meetings changed to the 3rd Tuesday at 6pm. Dates and events are subject to change. Bead Times have been cancelled until further notice.

General meeting, 3rd Tues., 6:00pm	Board meeting, 2nd Wed., 11:30am	Classes	Special events
Jan. 18	Jan. 12		Annual gala
Feb. 15	Feb. 9	Flowing River bracelet	Annual bead swap
March 15	March 9	Sweetheart necklace	Make doo-dahs for Fiesta
April 19	April 13	Wire weaving	Fiber Arts Fiesta
May 17	May 11		
June 21	June 8	Lariat necklace	
July – no meeting	July 13		Field trip?
August 16	August 10		
Sept. 20	Sept. 14		State Fair; flea market
Oct. 18	Oct. 12		Elections
Nov. 15	Nov. 9		
Dec. – no meeting	Dec. 14		





MAMA'S MINERALS
BEADS, FOSSILS, ROCKS & MORE

Your One Stop For the Holidays!

Drilled & Polished Stones & Fossils, Local
Artisan Jewelry, Rock Tumblers, Stone Lamps,
NatGeo Kits, MamaMade Christmas
Ornaments, Gift Certificates,
& MUCH MORE

505-266-8443
www.MamasMinerals.com
New Website!



We specialize in providing care for clients who need companionship as well as for clients who need end of life care.

Help For Your Loved One:

- Medication reminders
- Cooking favorite meals
- Total personal care including bathing, dressing, and assisting with hygiene
- Changing bed linens and doing laundry
- Light housekeeping
- Assistance with transportation to doctor's appointments, errands, and shopping

9004 Menaul Blvd NE #11,
Albuquerque, NM 87112

505-798-0978

Owner: Elizabeth Sands (BSNM member)
eesands@msn.com



SoftFlex Beading Wire
Original Flex-Wire
MEDIUM

Knot Tying
Stainless Steel
Nylon Coated

Test Strength
26 lbs.

DIAMETER .019 in. (.48mm)
LENGTH 30 ft. (9m)
49 Strands

www.SoftFlexCompany.com

#softflexwire

Join the *SoftFlex* Community!

Live Design Challenges
Tutorials
BOGO Offers
Giveaways
Special Discount Offers
Live Sales

Join the "Soft Flex Very Important Beading Studio" Group on Facebook for jewelry making inspiration!

 Subscribe to our YouTube Channel for video tutorials!

www.SoftFlexCompany.com

Toll Free Phone (866) 925-3539 • U.S. Phone (707) 938-3539

Request a Sample - Email Info@SoftFlexCompany.com

SoftFlex loves to support bead societies, as they are the backbone to our beading community. We have a coupon code for BSNM members. Just enter the code **BeadSociety10** at checkout. Coupon gives 10% off of each item, but it does not apply on top of other discounts and there is a limit of 4 uses per customer. No expiration date.

We're back with all your favorite Exhibitors!!!



BEAD SHOW

March 25-27, 2022
Fri & Sat 10am-6pm,
Sun 11am-4pm

Santa Fe Community
Convention Center
201 W Marcy Street



Sign up for a class and learn a new skill!



Anne Mitchell



Laura Stamper



Kristal Wick

Check out all the details at www.WholeBead.com

Jerome Nuñez
Owner

A FEW OF MY FAVORITE BEADS
Seed Beads • Delicas
Swarovski Crystals & Pearls
Fire Polish, Daggers & More

10137 Edith Blvd. NE
Albuquerque, NM 87113

(505) 974-1645

No additional discount for BSNM members

Beads • Findings • Classes

The Beaded Iris

(505) 299-1856
1512-F Wyoming Blvd. NE (N of I-40 at Constitution)
Albuquerque, NM 87112
www.thebeadediris.com

10% discount for BSNM members

Baskets of Africa.com
info@basketsofafrica.com

1-505-323-2315 – Local
1-800-504-4656 – Toll Free

Visit Our Showroom:
Open 10-3 Mon-Fri

1714 Eubank Blvd NE
Albuquerque, NM

FAIR TRADE
FEDERATION
MEMBER

15% discount for BSNM members

STONE MOUNTAIN BEAD GALLERY
Beads, Jewelry & Handicrafts of the World

Voted Albuquerque's Best Bead Shop!

Robert Steinberg - owner

4008 Central Ave SE
Albuquerque, NM 87108 505-260-1121

Mon-Sat 11-6 Sun 12:30-4:30
www.stonemountainbeads.com

20% discount for BSNM members

Beads and Beyond by Betty
Designer
Betty Smith
bettygardens@gmail.com
520-405-8142
www.BeadsandBeyondbyBetty.com

Cynthia A. Romero
Tax Preparation & Planning
Bookkeeping & Payroll Services

(505) 296-0521
(505) 263-3646
RomeroIII@msn.com

Member NATP

Get Your BSNM Discount

To get your BSNM discount at our business members' stores, you must show your current membership card. They won't accept expired cards or membership renewal emails or a letter from your mom!

Don't lose out. Be sure you have your 2021 BSNM membership card and show it when you make a purchase.

Tim & Larry's
ELIXIR BOUTIQUE CHOCOLATES

Elixir Chocolates
6616 Gulton Ct. NE,
Suite 60
Albuquerque, NM 87109
(off Osuna Road, west of Jefferson)
Open Monday – Friday
10:00 am – 3:00 pm
Call ahead on weekends.
505-933-5125

Procedure for Submitting Articles for Publication

Producing a quality monthly publication as well as maintaining an up-to-date website and Facebook page is not an easy task. We have three people who work hard to ensure that our members have the most timely and accurate information possible. But these tasks take lots of time and can't be done properly without the assistance of our members. Please remember to follow these procedures when submitting information to be shared with the general membership:

- Send all information to beadsocietynm@gmail.com
- Please send just one topic per email and be sure to include the topic in the subject line and indicate that the topic is for publication.
- Do not send articles or information as a response to another email; send a new, separate email.
- Be sure that any artwork, etc., you send is copy-ready in a format that can easily be downloaded and copied – preferably as an attachment (JPG, TIF, or PNG, or incorporated into a Word document).
- Please send complete information. The members of the Communications Committee are not mind readers. ☺ Please provide full names of persons, full addresses and contact information, dates and times, etc.
- Information to be included in the monthly publication, either the Newsletter or Bead Blast, MUST be received no later than the 20th of the prior month. Information received after that date will be shared via social media and on the BSNM website, and used for the following month's publication if appropriate.

2022 Board of Directors

Due to the New Mexico governor's COVID-19 restrictions, The Board of Directors has been meeting on the second Wednesday of the month via Zoom.

All members are welcome to attend.

President	Barbara Rosen
First Vice President - Special Events and Workshops.....	
Second Vice President – Programs.....	Pat Verrelle
Treasurer	Elizabeth (Liz) Reisinger
Secretary	Helen Yackel
Membership Chair	Deb Cole
Newsletter Editor	Jill Bartel
Volunteer Coordinator.....	Fran Hahn (State Fair)
Member-at-Large	
Past President.....	
Webmaster.....	Amanda Archuleta
Social Media Manager	
Photographer.....	Julie Fear
Historian	
Meeting Coordinator	Elizabeth (Liz) Reisinger
Membership Recruiter.....	
Fiber Arts Council Representative.....	Jamie Welles
Fiber Arts Education Committee Representative	Elizabeth (Liz) Reisinger

Copyright © 2022 Bead Society of New Mexico. All rights reserved.

Address: Bead Society of New Mexico, P.O. Box 91655, Albuquerque, New Mexico 87199

Website: www.beadsocietynm.org

Facebook: <https://www.facebook.com/BeadSocietyNM/>

Contact email: beadsocietynm@gmail.com

You are receiving this newsletter because you opted in at beadsocietynm.org.