



BSNM Newsletter

January 2023

The mission of this newsletter is to inform our members of the activities, events, and classes in the local beading community and to provide a forum where members can share beading knowledge and techniques.

In This Issue

Message from the President
Upcoming Events
January Gala
Renew Your Membership
Donated Beads for Sale
See the World through Beads
Placitas Library Call for Artists
Support Our Local Businesses
Beading Groups
Color of the Year 2023
Bead Definitions
Birthstone Symbology
Gem of the Month
Waterford Crystal New Year's Eve Ball
Workshops at Gypsy Raven
Rio Rancho Bead Estate
Studio Space Available
Fiber Arts Council
Keep in Your Thoughts
BSNM Financials Available on Website
2023 BSNM Calendar
Art Exhibits and Craft Shows
Business Member Ads
Procedure for Submitting for Publication
2023 Board of Directors

This newsletter welcomes new ideas from members and solicits articles and items of interest. Any special events taking place in your life (birthdays, anniversaries, condolences needed, new job, moving, births, weddings, awards, trips, transitions, etc.)? All manuscripts are subject to editing. The editor does not assume responsibility for the accuracy of information contained in the articles received. Please send all contributions for the newsletter to the editor in care of the Bead Society of New Mexico.

From the President

Greetings Artisans and Business Members,

Happy New Year! I hope your holidays were filled with friends, family, good food, and fun. I spent the holidays mailing gifts to my family and baking for them, too. One of our favorite recipes, from my great grandmother, is **Mandelbrot (nut bread.)** It's similar to biscotti but not as rock hard. Still wonderful to dunk in coffee or tea.

I'm looking forward to being part of the Bead Society 2023. We are still working on the calendar, organizing classes, programs, and an outing in July. If you would like to teach a class or present a program, please let a Board member know. Or, maybe you know someone who would like to do that. We are open to suggestions, even hosting a well-known teacher/artist.

This year we will be selling beads from the estate of Juanita Finger. **Each month beginning in February, there will be jars and packages of beads for sale at great prices.** Since the Wi-Fi is difficult to connect to at the church, we kindly ask you to bring cash or a check to make your purchases.

For our January 17th meeting we travel back in time to the Victorian era for a high tea party. Come join your friends for tea and parlor games. (If desired, you may bring a guest.) We will have tea sandwiches, desserts, and of course teas from around the globe. Feel free to dress up in your best/favorite tea party outfit and/or jewelry/gloves/hat. The Bead Society will be providing the refreshments for the party.

Please remember to pay your dues. It's only \$35 a year (for individual members). You can pay at the January meeting (cash or check) or online at www.beadsocietynm.org. Or, mail your check to: Bead Society of New Mexico, Attn: Membership, P.O. Box 91655, Albuquerque, New Mexico 87199

See you at the Tea Parlor,

Barbara Rosen, BSNM President,
301-351-3303,

beadsocietynm@gmail.com, www.beadsocietynm.org,
www.facebook.com/BeadSocietyNM/



Upcoming Events

January 5

Board Meeting

Thursday, January 5, 2023 11:30 am to 1:30 pm

Please note change of date for this month

The Board will meet to conduct the business of the bead society. Board members please plan to attend.

January 17

General Meeting

**Tuesday, January 17, 2023 6:00 pm to 8:00 pm
(set-up, social time, and buying raffle tickets beginning at 5:30 pm)
Heights Cumberland Presbyterian Church, 8600 Academy Rd. NE**

We will have a brief business meeting and then party and conduct our annual fundraiser raffle.

If desired, you may bring a guest to the party. We will have tea sandwiches, desserts, and various kinds of tea. Feel free to dress up in your best/favorite tea party outfit and/or jewelry/gloves/hat. The Bead Society will be providing the refreshments for the party.

Don't forget to bring your money for raffle tickets and to renew your annual dues.

Raffle tickets for the special raffle baskets at the High Tea Party will be \$5 each or three for \$10.

Masks are optional. We must wipe down the tables and must be out of the room by 8:30 pm.



**February 4
new info**

Polymer Clay Bead-Making Class

**Saturday, February 4, 2023 1:00 am to 3:30 pm
Heights Cumberland Presbyterian Church, 8600 Academy Rd. NE**

Pam Troutman will teach this polymer clay bead-making class.

Made with polymer clay, these beads look like rolled paper. This is a great way to use up scraps of clay. Scraps from this project can also be used for hand-formed focal pieces (see photo for example).

Class fee: \$40 (no kit fee)

Students must bring their own supplies:

- Pasta machine (find in second-hand shop or at craft stores)
- Polymer clay in assorted colors (one block for the main color and scraps of different colors for the confetti pieces; students can share colors if desired)
- Piece of 12x12 inch smooth tile for cutting
- Tissue blade and 12-inch metal straight edge or ruler with metal edge
- Toothpicks and a block of floral foam to stick finished beads in for transportation home

Supplies can be purchased at most craft stores.

Students will need a toaster oven to **bake their beads at home after class.**

Students will be able to make enough beads for one necklace and earring set, and if you are super-fast, two or more sets. Baking takes 20 minutes per batch and cannot be done during class time. Jewelry making is on your own time.

Minimum class size is 5 students, or class will be rescheduled.



January Gala

The theme for our annual gala and fundraiser in January 2023 is **English High Tea Party**. If desired, dress up in your best tea-party attire, as well as jewelry, gloves, and/or hat. The tables will be decorated to emphasize the tea party theme. BSNM is providing all the refreshments. We will enjoy hot tea and finger foods (tea sandwiches, mini quiches, various kinds of cookies, nuts, etc.), and play parlor games. There are prizes for winning the games!

The tables in our meeting room will be decorated with cloth tablecloths, teapots (which someone at each table will win), and flowers.



There will also be five raffle baskets to buy chances on. For this event, tickets will be \$5 each or three for \$10. The contents of the baskets will be themed to represent the following tea-growing and -consuming areas of the world:

- China and Japan
- England and India
- Africa
- Indonesia and Vietnam
- Russia

Each basket will include tea, a mug, beads, and other goodies. Thank you to our business members who donated some of the items in the baskets: A Few of My Favorite Beads, **Baskets of Africa**, **Mama's Minerals**, and Stone Mountain Bead Gallery. These baskets **wouldn't have been possible without you.**

We look forward to seeing all of you on January 17th at the High Tea Party!

January 24 – Blessing of the Candle of the Happy Women. In Hungary, this purification ceremony is performed annually on this date. What happier women could there be than those who love beads and who gather together to share their love and knowledge of beads?

Time to Renew Your Membership

A friendly reminder to renew your annual membership to continue receiving the full benefits from BSNM (such as buying and selling at the annual swap meet; reduced-price classes; special sales from our business members; and field trips). We need your support this year for the future of the Bead Society.

Cost is \$35 for individual membership, \$45 for household membership, \$55 to \$200 for business membership (depending on desired level).

You can renew with a credit card on our website, www.beadsocietynm.org/. (This is a secure website.)

Or mail your check to:

Bead Society of New Mexico
Attention: Membership
P.O. Box 91655
Albuquerque, New Mexico 87199

Donated Beads for Sale

BSNM has recently received several donations of beads – both relatively small amounts and entire estates. The Board members and other volunteers have been going through these donations, taking inventory, and pricing the beads. We will have a portion of these beads for sale to our members at the general meetings beginning at the February 2023 meeting.

The Board's question to the membership is "to what purpose should we use the monies from the sale of these beads?" Would you like the monies to be used for a trip, to bring in a national instructor, to be donated to a charity, to conduct a bead retreat for members? If you have an idea of how you would like to see these monies spent, please contact the Board at beadsocietynm@gmail.com



Copyright Homemade Preschool.com

Hitching the Bead: See the World through Beads Large and Small

by Jessica Gordon

reprinted from *Simply Beads* magazine, October 2006

As legend has it, the island of Manhattan was purchased from the Weckquaesgeek Indians by the Dutch colonists for the bargain basement price of twenty-four dollars in beads and trinkets. Although that sum is a pittance—then and now, and although some experts say the Dutch actually bought the land from the wrong tribe—the long life of the legend is a testament to the value of beads throughout history.

Candy-colored, round and smooth, jagged and irregular, faceted and polished, gemstone and shell, metal and plastic, tiny as grains of sand or large as saucers, beads have always had a hypnotic pull.

While today's beads are mostly corralled into specialty shops and craft stores, their allure remains the same. Arranged neatly by color, organized carefully into little stadium-style square bins and hanging ornamentally by the strand, the look of them is what's most appealing. It's easy to forget that "Czech" and "Swarovski," "Indian," and "Venetian" are more than just descriptors. Each bead for sale represents a journey. Beads have bought and sold goods and land and even people. They are woven into mythology and are thought to have protective and healing powers. Collectively, they can stand metaphorically for the cultures, countries and geographies from whence they come.

For example, in Sicily you'll see that every jewelry store window showcases coral beads and cameos in every shade and shape imaginable. And any visitor to Thailand would be sure to bring home an auspicious souvenir made of jade beads.

Each country, and each region, has a bead identity, based on craftsmanship, as with Swarovski crystal and Czech glass, or based on geology, as with native American turquoise. Of course, the real beauty of beads is that they don't stay put. No matter their country of origin, they always manage to arrive far afield—they're a real global commodity.

Before we ever thought of globalization, before cell phones and the Internet brought us the incredible shrinking world, before America lovingly adopted Hello Kitty and before Volvos appeared in the Midwest, beads crossed international borders and enmeshed themselves in new cultures. In fact, as early as 1000 BC, Baltic amber made its way to China, where possessing it was sign of great wealth. To impress his guests, when any great noble gave a feast, he would have quantities of amber brought in at the end of the meal to be burned. The ensuing flames were brightened by their precious fuel and were said to give off a pleasing perfume. A noble's reputation for greatness rose with the amount of amber he could afford to waste.

So go to your favorite bead store or look through your bead stash to hitch a ride to places near and far on the backs of beads. Think of the jewelry you can make by drawing on the cultural traditions and bead significance of lands as varied as Japan, Russia, Brazil, and Egypt. You'll find that what you make are far more than simple necklaces, earrings, or bracelets—they're portals into other lands and cultures.

Placitas Library Call for Artists

The theme for the March/April 2023 exhibit at the Placitas Community Library is **"New Mexico – Sense of Place."** Magical, enchanted, complex, and at times tragic ... **New Mexico's history and environment is as diverse as its inhabitants.**

Inviting artists to contribute their interpretation and sense of place in their chosen medium.



"Desert Colors" by Alfons Schuster

Submission deadline: February 5, 2023

Exhibit: March 18 – April 27, 2023

Coordinator: Margaret Burch

For more information and artist's submission form, go to <https://placitaslibrary.com/> and click on Art Exhibits.

**"Jewelry isn't meant to make you look rich.
It's meant to adorn you.
And that's not the same thing."
— Coco Chanel, fashion designer**

Support Our Local Businesses

A Few of My Favorite Beads: Call 505-974-1645 or come by to see our latest beads.

Baskets of Africa: We have an abundance of baskets to choose from. Come see our great selection of beautiful artisan-made, fair-trade baskets. 505-323-2315 or go to info@basketsof africa.com.

Beadweaver of Santa Fe: We are still offering a 10% discount to BSNM members.

The Beaded Iris: We offer 10% discount to BSNM members, as well as our punch cards for future savings. Come on into the store and rediscover all the beads, crystals, delicats, findings, thread, and other products you need to complete your beautiful project. **Open beading on Wednesdays.** Store hours are Mon. through Thurs. 10am to 5pm; Fri. through Sat. 10am to 4pm. Sun. closed. Phone: 505-299-1856; email: beadedirisstore@aol.com.

Glorianna's Beads (Santa Fe): 70 West Marcy Street, Suite B. Phone: 505-982-0353. Open Tues-Wed and Fri-Sun 10:30am to 4pm.

Mama's Minerals: Bead Society members get 15% off on regular-priced merchandise. You can buy beads in bulk every day for up to 25% off. Larger discounts up to 30% off our newly restocked clearance beads. **Mama's Minerals** proudly supports local artists. www.MamasMinerals.com.

Meltdown Studio: Check out our **new and returning classes** (Mohave Half Moon earrings, Double Feather ring, Beginning Small Metals, Introduction to Lapidary) at <https://www.meltdownstudio.com/group-classes-1>.

New Mexico Bead Company: New Mexico Bead Company is located at 4111 Louisiana NE, Albuquerque (north of Montgomery). 505-243-2600. Website: <https://www.nmbead.com/>. Stone, glass, shell, and wood beads; fetishes; pendants; metal beads and findings.

Santa Fe Jewelers Supply: Open 9:00am to 5:00pm. Curbside pickup, mail order, or visit our showroom today! Order on our website at www.sfjs.net day or night. Phone: 505-988-9157.

Stone Mountain Bead Gallery: We're open Mon. through Sat. from 11am to 6pm; Sun. 12:30pm to 4:30pm. Call 505-385-2200 to arrange contactless pickup. **30% off for BSNM members.** Back issues of *Bead&Button* magazine are 50% off.

Thomason Stone Supply: Store hours are Mon. through Sat. 9am to 5pm (winter hours). You can place an order by calling us at 888-353-9934 or 505-268-9934, or by filling out a contact form on our website, <https://www.thomasonstonesupply.com/>.

Thunderbird Supply Company: See our website (<https://www.thunderbirdsupply.com/>) for online and in-store specials. Store hours: Mon.-Fri. 9am-6pm; Sat. 10am-5pm.


Treasures of the Gypsy/Gypsy Raven: Treasures of the Gypsy Show Room is open by appointment, as well as for classes. Please contact Pamela Armas to schedule your appointment at 505-847-0963, or email her at gypsytreasures@cs.com

Beading Groups


Laurie Tanner's house: Beginning November 18th, **every Friday at 1:00 pm.** Bring your beads, thread, needles, beading matt, etc. – whatever you need for the project you are working on. Also bring your own beverage. 3100 Camino de la Sierra NE, Albuquerque, 87111. You **must RSVP** as there is limited space. laurvert@yahoo.com

Bosque Farms: Do you live in the Bosque Farms area? Join BSNM member Kathy Jost at the Bosque Farms Community Center for the **BFCC Bead Group on the 2nd and 4th Thursday of the month from 2:00 pm to 5:00 pm.** Bosque Farms Community Center is located at 950 N Bosque Loop in Bosque Farms, New Mexico. Phone: 505-869-5133.

Placitas: This beading group is taking a break for the winter months. We'll let you know when they start meeting again.




PLACITAS Community LIBRARY



STITCHED....WOVEN....APPLIQUED
.... EMBELLISHEDPIECED

AN EXHIBITION OF TEXTILE ART

TUESDAY, NOVEMBER 22 – THURSDAY, JANUARY 5
 RECEPTION: FRIDAY, DECEMBER 9, 5:00–6:30 PM





CAROL ALLEN | ARLEY BERRYHILL | ANN BLANKENSHIP | PATTY BRACHT
 KAREN CROXTON | CRISTINA DIAZ-ARNTZEN | JULIE FEAR | CLAUDIA FLUEGGE
 PAT GOULD | GENIE GRAY | LAUREL HULL | DIANA KIRKPATRICK | BARBARA KNUPPER
 KATHY KOON | MELISSA LOWRY MOSLEY | DOLores MARTIN | CHERIE MARTIN IRWIN
 SUSAN MAZARR-PROO | LINDA NOVY-DOLL | JULES NYQUIST | KATHY O'CONNOR
 JUDITH RODERICK | LARRY SCHULTE | LEE SMALL | PAM TROUTMAN

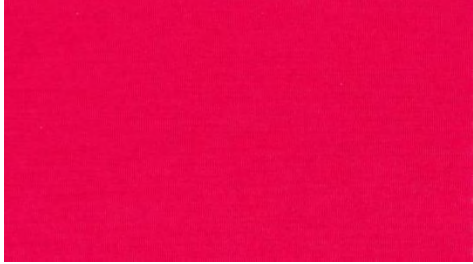
ON DISPLAY IN THE GRACE LEE COMMUNITY ROOM
 PLACITAS COMMUNITY LIBRARY, 403 N. MOUNTAIN, PLACITAS, NM

Julie Fear, Diana Kirkpatrick, and Pam Troutman have artwork in this show.

Color of the Year 2023

<https://www.pantone.com/articles/color-of-the-year/what-is-viva-magenta>

Viva Magenta is the 2023 Pantone Color of the Year. Calling it an unconventional shade for an unconventional time, Pantone says magenta is the color we need this year. It vibrates with vim and vigor. It is a shade rooted in nature descending from the red family and expressive of a new signal of strength. Viva Magenta is brave and fearless, a pulsating color whose exuberance promotes a joyous and optimistic celebration, writing a new narrative.



This year's Color of The Year is powerful and empowering. It is an animated red that revels in pure joy, encouraging experimentation and self-expression without restraint, an electrifying, and a boundless shade that is manifesting as a stand-out statement. Viva Magenta welcomes anyone and everyone with the same verve for life and rebellious spirit. It is a color that is audacious, full of wit, and inclusive of all.

Viva Magenta translates beautifully to the world of jewelry, with many corresponding beads and gemstones in the "magenta-verse." Use it as an eye-catching accent, in combination with other pinks for a monochromatic look, or as a dramatic statement color. Pantone began selecting a color (or colors) of the year in 2000. Designers and other creatives use the color to influence their color choices as they build jewelry collections, design fashion, create packaging, decorate homes, and more.

Bead Definitions

chevron beads: A multi-layered glass bead, with a zigzag pattern on the beveled ends. Chevrons were first created around 1500 by the Venetians, who called them "rosetta beads." Although the Italian originals were made in blue, red, and white glass, chevrons are now made in a variety of colors.

millefiori beads: The literal translation from the Italian is "thousand flowers." These beads originate from an ancient glassmaking technique dating back to 300 B.C. The pattern and colors of this style of bead make a stunning addition to any piece of jewelry or ornament.

Birthstone Symbology

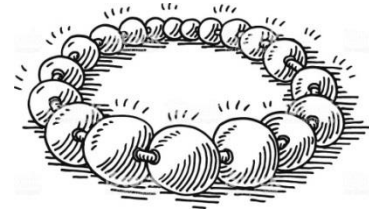
As we start a new year, you may want to change up how you bead or learn more about beads and stones. Use the following list of birthstones and their qualities to add some meaning and symbology to your beadwork.

January: garnet for protection
 February: amethyst for serenity
 March: aquamarine for healing
 April: diamond for courage
 May: emerald for love
 June: pearl for happiness
 July: ruby for strength
 August: peridot for prosperity
 September: sapphire for wisdom
 October: opal for confidence
 November: citrine for creativity
 December: turquoise for success

A Circle of Beads

According to *An Illustrated Encyclopedia of Traditional Symbols* by J. C. Cooper, a circle of beads represents continuity, perpetuity, and endless duration. So what does a gathering of bead lovers and collectors represent? A continuing love of beads, an interest in learning how beads have endured as a source of currency and ornamentation, and a desire to perpetuate this fascination by sharing it with others in the community.

Working together, we can make the Bead Society of New Mexico all these things in the coming year.



Gem of the Month – Sugilite

Sugilite (SOO-jə-lyte) is a relatively rare violet to purple-red mineral with the complex chemical structure: potassium sodium lithium iron manganese aluminum silicate. Although it crystallizes in the hexagonal system with prismatic crystals, crystals are rarely found and the mineral's form is usually massive. It is usually opaque to translucent and is lustrous when polished, which highlights the deep purple color that indicates the best specimens.

Sugilite was first discovered in 1944 by Japanese geologist Ken-ichi Sugi and M. Kutsuna on Iwagi Islet, Japan, where it is found in an aegirine syenite intrusive stock. The mineral is found in a similar environment at Mont Saint-Hilaire, Quebec, Canada. In the Wessels mine in Northern Cape Province of South Africa, sugilite is mined from a strata-bound manganese deposit. It is also reported from Liguria and Tuscany, Italy; New South Wales, Australia; and Madhya Pradesh, India.



Massive pinkish-purple sugilite containing numerous purple sugilite microcrystals. This specimen measures 3.0 x 2.8 x 1.3 centimeters and is from the Wessels Mine, Northern Cape Province, South Africa.



A specimen of gray-black manganese-bearing shale from the Kalahari Manganese Field that contains bands of fibrous sugilite. The fibrous portions of the bands produce chatoyant reflections. This specimen measures 11.2 x 10.9 x 4.7 centimeters and is from the N'Chwaning III Mine, North Cape Province, South Africa.



Three small cabochons of translucent sugilite with a wonderful purple color. They are a grade of sugilite that is often described as "gel sugilite." The cab in the center measures approximately 5 x 10 millimeters.

Cabochons, beads, and small sculptures are the most common items made from sugilite. With a Mohs hardness of 5.5 to 6.5, sugilite is best used in pendants, earrings, brooches, and other items that are not exposed to abrasion or impact. When used in rings and bracelets, sugilite should be in a mounting that protects it from damage, and the owner should be aware of the fact that it is a fragile gemstone.

The best pieces of solid sugilite are usually found in one-of-a-kind jewelry items. However, increasing amounts of sugilite are appearing in the sterling-silver-and-turquoise jewelry that is popular in the southwestern United States. It is often used in inlay designs and as small secondary stones.

Much of the material that is called "sugilite" and used to make jewelry is a natural mixture of sugilite and other minerals, sometimes with sugilite being a minor ingredient. In rocks near where sugilite is found, purple chalcedony with suspended particles of sugilite is sometimes found. This material can be beautiful and is similar to gem silica.

Imitation sugilite and composite materials made to imitate sugilite are abundant in the marketplace. These items are often sold without disclosure. Much imitation sugilite is also labeled as "synthetic." It is likely that sellers are unaware of what they are selling.

The Gemological Institute of America (GIA) reports that dyed marble and dyed quartzite have been used as sugilite imitations. GIA also reported on purple beads that were a convincing imitation of sugilite. Advanced testing of the beads revealed that they were made from dyed serpentine.



The purple material in these cabochons is made of powdered sugilite that has been pressed into a mold and bound together by resin. The cabochon on the left is an assembled stone made by artistically combining imitation sugilite and imitation opal. The cab on the left measures 20 x 50 millimeters, and the cab on the right measures 23 x 45 millimeters.

A person interested in purchasing sugilite jewelry, loose stones, or cutting rough should be very familiar with the material. The conditions of the gem that they might encounter are as follows:

1) Natural sugilite: This is a naturally occurring material that consists entirely of natural sugilite. Attractive pieces of this material should sell for the highest prices, with an attractive, uniform color being an important element of value. This material is the choice of a person who wants to purchase a wonderful product of nature.

2) A natural mixture of sugilite and other minerals: This is a naturally occurring rock made up of sugilite and other minerals. These materials can be attractive and desirable. Their color, pattern and appearance are important elements of value, but these items will sell for a lower price than equally attractive items comprised entirely of natural sugilite.

3) A man-made composite of crushed sugilite and resin (block sugilite): This is a man-made material that might be especially attractive, with color enhancement being likely. Attractive pieces of this material should sell for significantly lower prices than natural sugilite of similar color and appearance. Buy this if you like sugilite, if you like the appearance of the piece, and if you are satisfied with an item that is made from crushed sugilite bound together with resin, and probably color-enhanced. This is what you will likely receive if you are buying at the lower end of the sugilite price range. Some buyers absolutely do not want this material. They want naturally formed sugilite. But, there is nothing wrong with buying this product if you like it and your seller discloses what you are buying. Unfortunately, some sellers label this material as "sugilite" and do not know or choose not to disclose its true nature.



A block of imitation sugilite made from a resin composite. This specimen measures approximately 9.8 x 4.8 x 3.5 centimeters.

4) A natural material that is not sugilite, but has been dyed and treated to be a sugilite look-alike:

The Gemological Institute of America reports that people are making sugilite look-alikes by dyeing marble, serpentine, and quartzite. There is nothing wrong with buying these as long as you know that you are not buying sugilite, and the seller is not telling you that the item is natural sugilite.

5) A man-made material that contains no sugilite: This is a man-made material produced with the goal of being a sugilite look-alike. It could be made

from ceramic, plastic, glass, or another material. It is an imitation sugilite that should sell for a significantly lower price than similar-looking items from the categories above. There is nothing natural in this material, but if you like it there is nothing wrong with buying it. The problem occurs when the seller fails to disclose that it is a man-made imitation and is simply promoting it as "sugilite."

Buy with caution. On the basis of "sight" alone, it can be difficult to impossible to tell the difference between sugilite, rocks containing abundant sugilite, block sugilite, and some of the dyed and imitation materials. Microscopy, spectroscopy, specific gravity determination, and refractive index testing can help separate sugilite from many of its look-alikes. If you are spending serious money on a sugilite item, you should have its identity confirmed by gemological laboratory.

Sugilite offers lots of designing possibilities--whether it is beads, cabochons, inlays, and much more--and is ideal for men's and women's jewelry. Like amethyst, sugilite's variety of purples makes it go well with just about everything from gold or silver, pearls and paua shell, smoky quartz, or peridot. Sugilite is especially striking set against gold hues, as used by well-known couture jewelry companies such as Dior. Sugilite also works well for southwestern/Native American-influenced jewelry set in silver and gold mosaic inlays along with other brightly colored gemstones.



Sugilite beads

In crystal healing, sugilite's deep violet color is seen as a sign of awakening spiritual potential through the crown chakra, and an influx of wisdom to humans dedicated to caring for the planet. It brings divine love to the earth and encourages compassion for all beings. Sugilite also opens the third-eye and crown chakras, enabling deep perceptions of one's place on the earth and spiritual destiny. This stone clarifies and intensifies dreams, as well as eases insomnia, especially that caused by mental overload. Additional uses for sugilite are cancer support and easing grief.

Sugilite is known by other names, including wesselite, purple turquoise, cybelene, lavulite, luvulite, royal azel, royal lavulite, and royal lazelle.

Today, most sugilite entering the market as gem rough or mineral specimens is from a few mines in the Kalahari Manganese Field, North Cape Province, South Africa. Gem material from the Wessels Mine has been marketed under various names that include lavulite and royal azel.

Sugilite is one of the gemstones for the zodiac sign of Virgo (August 23 to September 22).

"Gift of Love" Revealed as the 2023 Waterford Crystal Times Square New Year's Eve Ball Theme

December 27, 2022

<https://finance.yahoo.com/news/gift-love-revealed-2023-waterford-180000498.html>

This holiday season, there is excitement to gather again and special memories to create with loved ones, making New Year's Eve a chance to reflect upon the year. With a new year inspiring us to look forward, Waterford reveals the newest design in their "Greatest Gifts" series: "Gift of Love." This marks the tenth year in the series of designs and themes for the Waterford Crystal Times Square New Year's Eve Ball.



Waterford Crystal Times Square New Year's Eve Ball

For over 20 years, the Waterford Crystal Times Square New Year's Eve Ball has been the symbol of New Year's Eve for people all around the world. Part of the yearly tradition includes replacing 192 of the 2,688 Waterford Crystal triangles on the Ball with designs from the yearly "Greatest Gifts" collection. This year's "Gift of Love" design will be included next to the past nine designs and last year's "Gift of Wisdom" pattern. On Friday, January 1st at 12:00 AM ET, billions of people from all around the world will tune in to witness the iconic 2023 Waterford Crystal Times Square New Year's Eve Ball drop.

"The anticipation for this year's New Year's Eve celebrations is greater than ever before and gathering with friends and family for those intimate moments are not being taken for granted," said Tom Brennan, Master Craftsman and Spokesperson, Waterford Crystal. "With Waterford's "Gift of Love" collection, we hope it inspires everyone to see 2023 as an opportunity for a fresh start and full of potential, and we're grateful the iconic Waterford Crystal Times Square New Year's Eve Ball will be part of your special moments together."

About the Greatest Gifts Collection

The Waterford Crystal Times Square New Year's Eve Ball Greatest Gifts Collection is a distinctive 10-year

issue of crystal ornaments, stemware, and giftware sharing the common thread of international generosity. Beginning with the "Gift of Imagination," in 2014 and concluding in 2023 with the "Gift of Love," each annual edition of the Greatest Gifts series depicts a "gift" – a theme of global aspiration whose value is universally treasured. Waterford designers create a signature cut crystal design for each edition which will be incorporated into the Waterford Crystal Times Square New Year's Eve Ball, such as this year's "Gift of Love" triangle.

Ball Fun Facts

- The Ball is a geodesic sphere, 12 feet in diameter, and weighs 11,875 pounds.
- The Ball is covered with a total of 2,688 Waterford Crystal triangles that vary in size, and range in length from 4¾ inches to 5¾ inches per side.
- For Times Square 2023, 192 Waterford Crystal triangles introduce the new "Gift of Love" design represented by a circle of overlapping hearts entwined together. 192 triangles are the "Gift of Wisdom" design of a central wheel with wedge cut petals of knowledge growing ever forward. 192 triangles are the "Gift of Happiness" design of a sunburst of bright cuts radiating outward like a beautiful sunny day brings warm smiles and happiness. 192 triangles are the "Gift of Goodwill" design of three pineapples signifying the traditional symbol of hospitality and goodwill. 192 triangles are the "Gift of Harmony" design of small rosette cuts flowing into each other in beautiful harmony. 192 triangles are the "Gift of Serenity" design of butterflies flying peacefully above a crystal meadow capturing the spirit of serenity. 192 triangles are the "Gift of Kindness" design of a circle of rosettes symbolizing unity with the fronds reaching out in an expression of kindness. 192 triangles are the "Gift of Wonder" design of a faceted starburst inspiring our sense of wonder. 192 triangles are the "Gift of Fortitude" design of diamond cuts on either side of a crystal pillar to represent the inner attributes of resolve, courage, and spirit necessary to triumph over adversity. The remaining 960 "Gift of Imagination" triangles are a series of intricate wedge cuts that are mirrored reflections of each other, inspiring our imagination.
- The 2,688 Waterford Crystal triangles are bolted to 672 LED (light-emitting diode) modules which are attached to the aluminum frame of the Ball.
- The Ball is illuminated by 32,256 LEDs. Each LED module contains 48 LEDs — 12 red, 12 blue, 12 green, and 12 white for a total of 8,064 of each color.
- The Ball is capable of displaying a palette of more than 16 million vibrant colors and billions of patterns that creates a spectacular kaleidoscope effect atop One Times Square.

New Workshops at Gypsy Raven Studio/Gallery

All workshops will be held at Gypsy Raven Studio/Gallery located at 111 W. Broadway, Mountainair, NM 87036. For multiple day workshops, Pamela Armas will make arrangements with local hotels with special rate discounts for those that need overnight lodging. Lunch and dinner can either be brought by the attendee or B Street Deli has a good menu for take-out.

To sign up for any of the workshops, contact Pamela Armas by email at gypsytreasures@cs.com and she will email you a form to fill out to register for class. Mail form and check made out to Pamela Armas to: Pamela Armas, PO Box 748, Mountainair, NM 87036. Phone: 505-847-0963. **Maximum of 10 students per workshop. No cancellation refunds within 72 hours of workshop.**

Fabric Collage Book

**Saturday, January 28, 2023;
10:00 am to 5:00 pm**

In this one-day workshop you will create a 12 in x 8-3/4 in. book with 3 signatures. You will experience "free-motion" embroidery technique using Treasures of the Gypsy's wonderful fabrics.

Your kit fee includes: material for book cover, Treasures of the Gypsy bits and pieces of fabric, interfacing for inside book cover, and some papers.

Cost: \$100.00 plus a \$30 kit fee (kit fee can be paid at workshop).

Workshop fee of \$100 is due January 15, 2023. Receipt of your deposit will hold your workshop place. Material list will be sent to you once you register.

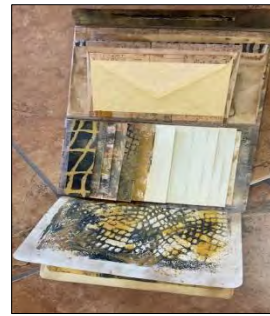


Waterfall Journal

**Saturday, February 11, 2023;
10:00 am to 5:00 pm**

In this one-day workshop you will make a 9 in. x 6 1/2 in. journal made all from paper. The book is a tri-fold rectangle composition which includes 8 pages, 4 pockets, 1 enclosed book tucked inside a large pocket, and a waterfall of pages. This is the perfect book to hold ideas, make notations, and tuck away little treasures. The light colored example is made from commercial craft paper (Tim Holtz) with coffee dyed pages. The dark colored example is made from gel print and coffee dyed papers. You can bring your choice of papers to construct your book.

Cost: \$100. Workshop fee of \$100 is due on January 11, 2023. Receipt of your workshop fee will hold your place. Material list will be sent to you once you register.



Exploring #Post Consumer Art and the Gel Plate with Robyn McClendon

**Tues., February 28 – Wed., March 1, 2023;
10:00 am – 5:00 pm**

NOTE: On the evening of Feb. 27, students (those who wish to attend) are invited to a "Meet the artist/meet the students" gathering.

Why #Post Consumer Art Project? Robyn is an artist living in the Sonoran desert of the American Southwest. She loves the desert life, the ways in which it has added to not only her strength as a being living on a giving, abundant Mother Earth but it has enhanced her visual vocabulary as the language of her emotions has deepened. She, like many of you, has always been concerned and aware of the amount of consumer waste that she personally contributes to the planet. Even sooner than the past 2 years with the global shutdowns and the need to order on line more! She couldn't bear to throw all those packaging envelopes and boxes away so she sought ways to use them in her studio during her art explorations. She shared this journey with her community and they collectively named this project #postconsumerart!



In this two-day workshop Robyn will introduce methods to work directly on the gel plate using traditional block printing inks to create decorative and textured papers with paints, inks, and spray dyes. We will take those papers and incorporate them into a book structure using paper packaging, envelopes, and cardboard boxes as the substrate. The focus is to explore creating our own papers using symbols and shapes from our personal visual vocabularies to create powerful and significant dialogues in our artwork, additionally exploring the book format "as art" and the various ways this medium is a compelling form of creative and artistic expression.

Cost: \$545 (no kit fee). Workshop fee of \$545 is due on January 10, 2023. Receipt of your workshop fee will hold your place. Material list will be sent to you once you register.

Rio Rancho Bead Estate

Jerome Nunez, of A Few of My Favorite Beads, knows of a bead estate in Rio Rancho with beads for sale at a discount. There are some stipulations to buying:

- You must call Jerome and make an appointment to go to the bead estate (it is not at his shop)
- The bead estate is only available on Tuesdays
- Limit of 3 people at a time
- Jerome will drive you to the bead estate

To make an appointment or if you have any questions, call 505-974-1645.

Studio Space Available

Business partners Sally Jewell and Sally Williams have opened a 1,700-square-foot studio in the Hoffmantown Shopping Center at Menaul and Wyoming for all fiber arts crafts. They offer guilds, groups, or individuals a meeting space, a gathering work space, or an opportunity to use the space to teach classes.

The partners are both mothers and work full time, so the space is currently open Fridays and Saturdays, but will open and host any group when requested.

The Sewing Place Abq
8252 Menaul Blvd. NE, Albuquerque, NM 87110
thesewingplaceabq@gmail.com, 505-705-2952
www.thesewingplaceabq.com

Fiber Arts Council

The Albuquerque Fiber Arts Council is looking for candidates who are interested in promoting fiber arts in New Mexico to fill board positions. If interested, please go to <https://abqfiberartscouncil.org/fiber-arts-council/> to fill out an application. (This is different than being BSNM's representative to the Council.)

The Albuquerque Fiber Arts Council was formed in 1997 to provide the opportunity for local fiber guild members to show their work to the public. It has grown from six guilds then to almost twenty. The Board of Directors has seven members who are dedicated to continuing the tradition of hosting the Albuquerque Fiber Arts Fiesta every other year. As a 501(c)3 organization, the proceeds from the Fiesta provide funding for other public shows and scholarships.

The Council is also seeking individuals interested in working on the marketing committee. If you would like to be involved and work with a great team promoting Fiber art, please email michellejackson@quiltfashions.com

Bead Store for Sale

After 30 years in retail and 50 years in jewelry, imports, and wholesale, **Robert Steinberg, owner of Stone Mountain Bead Gallery (voted Albuquerque's Best Bead Store), is selling off his huge accumulation beads, jewelry, and world handicrafts.**

Included are thousands of strands of vintage Czech beads; African trade beads; gemstone and mineral beads; Native American turquoise and heishi; and more. Also loads of silver and gemstone jewelry; Bali silver beads; wood, ceramic, glass, brass, and stone beads; Swarovski crystals; costume jewelry; seed beads by the pound; and handicrafts, art, and jewelry from Nepal, India, Tibet, Thailand, Bali, and Turkey. Collectables and statues – oriental, Native American, dragons, skulls, Buddhas, malas, and rosaries.

Quantity discounts!

Also, building for sale: retail space on Route 66/ Central Ave. in popular Nob Hill neighborhood. 5,000 square feet currently divided into two stores. Signage and huge parking lot.

Contact: Robert Steinberg
Stone Mountain Bead Gallery
4008 Central Ave. SE, Albuquerque, NM 87108
Phone: 505-260-1121
Email: rsteinberg50@comcast.net

Fundraiser for Barbara Butcher

Barbara Butcher, who has been battling cancer, had a stroke earlier this year that left her with limited use of her right arm and leg. Consequently, she will probably need 24-hour assistance going forward.

To help combat this expense, Jerome Nunez of A Few of My Favorite Beads has volunteered to sell the leftover stock from Barbara's former store, The Beading Heart of Santa Fe. **Sales are cash only. All monies will go to Barbara for her medical expenses.**

You must make an appointment to purchase these beads. Please call Jerome at (505) 974-1645.

Jerome says he can accommodate appointments 7 days a week, beginning at about 11am, but says that Wednesdays are probably the best days.

All items are upstairs at Jerome's store (up a spiral staircase). If you are unable (or unwilling) to climb the stairs, Jerome said he is willing to bring boxes down to you – if you have an idea of what you are looking for.

Put Fiber Arts Fiesta 2024 on your calendar for April 11-13, 2024!

It will be here before you know it!

Keep in Your Thoughts

Jill Bartel, whose father has been in the hospital and is now in rehab

Nina Forrest, who survived her brain surgery (she's in her eighties!)

Pat Verrelle, whose husband recently had cancer surgery

Mary Ellen Merrigan, whose husband recently received cancer treatment

Family of Joni Bold, who recently passed away

If you would like to send a card or note of encouragement to any of these members, please address the envelope to them **in care of the Bead Society of New Mexico, P.O. Box 91655, Albuquerque, New Mexico 87199**, and we will ensure that they get your messages.

Happy Birthday

Barbara Lewis – January 11

Helen Yackel – January 13

Susan Hostettler – January 15

Marsha Ronquille – January 18

Vonnie Martin – January 25

Jessica Dowell – January 25

If your birthday isn't listed here, please let us know at beadsocietynm@gmail.com so we can wish you a Happy Birthday!

Get More Information on the BSNM Website

■ **Classes:** For classes taught by our business members and other non-BSNM-sponsored classes, go to <https://beadsocietyofnewmexico.wildapricot.org/Bead-Time> for dates, times, and descriptions.

To review class details and to register online, log in to the BSNM website with your email and password and go to the event page

<https://beadsocietyofnewmexico.wildapricot.org/Meetings-Classes-and-Events>.

■ **Craft Shows and Other Events:** To see upcoming shows that our members are involved in, go to the Members Art Shows listing at <https://beadsocietyofnewmexico.wildapricot.org/Art-Shows>. Also, if you have an art show you are participating in, don't forget to send the information and event link to beadsocietynm@gmail.com so we can include your event.

BSNM Financials Available on Website

The monthly and annual financial reports for the Bead Society of New Mexico are now available in the "Members Only" section of the BSNM website (you must have/create an account on the website to access these documents). Go to www.beadsocietynm.org and log in to the website (click on "Log In" in the far upper right corner of the homepage; you need to register first if you haven't done so before). Hover over the "Members Only" section on the right end of the categories bar with your mouse and click on "Financials" in the drop-down menu. Then click on the document you want to read. (You may need to temporarily disable your pop-up blocker since the documents may open in a new window or tab).

2023 BSNM Calendar

The following is the calendar for BSNM meetings and events for 2023. **Dates and events are subject to change.**

General meeting, 3rd Tues., 6:00pm	Board meeting, 2nd Tues., 11:30am	Classes	Special events
Jan. 17	Jan. 5		Annual gala
Feb. 21	Feb. 13	Confetti polymer beads	Annual bead swap
March 21	March 14		Whole Bead Show
April 18	April 11	Basic Bead Embroidery	
May 16	May 9		
June 20	June 13		
July – no meeting	July 11		Field trip?
August 15	August 8		
Sept. 19	Sept. 12		State Fair
Oct. 17	Oct. 10		Elections
Nov. 14	Nov. 7		
Dec. – no meeting	Dec. 12		



Whole Bead Show

March 24-26, 2023

Santa Fe Community Convention Center
Santa Fe, New Mexico



Join the *Soft Flex* Community!

Live Design Challenges
Tutorials
BOGO Offers
Giveaways
Special Discount Offers
Live Sales

Join the "Soft Flex Very Important Beading Studio" Group on Facebook for jewelry making inspiration!

 Subscribe to our YouTube Channel for video tutorials!

www.SoftFlexCompany.com

Toll Free Phone (866) 925-3539 • U.S. Phone (707) 938-3539 • Free Shipping on orders over \$65 in the USA

Use coupon code **BeadSociety10** to get 10% off! • DOES NOT APPLY WITH OTHER DISCOUNTS • LIMIT 4 USES PER CUSTOMER

SoftFlex loves to support bead societies, as they are the backbone to our beading community. We have a coupon code for BSNM members. Just enter the code **BeadSociety10** at checkout. Coupon gives 10% off of each item, but it does not apply on top of other discounts and there is a limit of 4 uses per customer. No expiration date.



 **MAMA'S MINERALS**
BEADS, FOSSILS, ROCKS & MORE

Your One Stop For the Holidays!

Drilled & Polished Stones & Fossils, Local
Artisan Jewelry, Rock Tumblers, Stone Lamps,
NatGeo Kits, MamaMade Christmas
Ornaments, Gift Certificates,
& MUCH MORE

505-266-8443
www.MamasMinerals.com
New Website!





We specialize in providing care for clients who need companionship as well as for clients who need end of life care.

Help For Your Loved One:

- Medication reminders
- Cooking favorite meals
- Total personal care including bathing, dressing, and assisting with hygiene
- Changing bed linens and doing laundry
- Light housekeeping
- Assistance with transportation to doctor's appointments, errands, and shopping

9004 Menaul Blvd NE #11,
Albuquerque, NM 87112
505-798-0978

Owner: Elizabeth Sands (BSNM member)
[easands@msn.com](mailto: easands@msn.com)

dorje designs



Style, soul, and history . . .
all in a single piece of adornment.

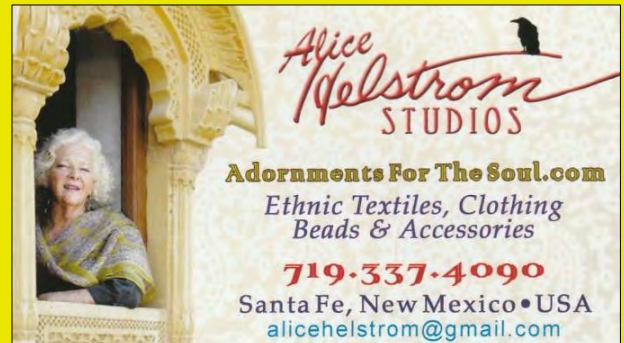
Anna Holland designs unique ethnic jewelry and tribal jewelry using contemporary, antique, and ancient beads and artifacts. Her handcrafted necklaces, bracelets, and rings are all one-of-a-kind treasures, collected and worn by women and men around the world.

<http://www.dorjedesigns.com/>
info@dorjedesigns.com



15% discount for BSNM members

Alice Helstrom Studios



10% discount for BSNM members

Treasure of El Dorado

Lewis S. Toth, Owner and Designer

Handmade Southwestern style jewelry, beadwork with semi-precious gems, corals, shells, artistic metal, and glass beads from all over the world, and fetishes imported from Philippines.

Best material and workmanship guaranteed.

Offered to you at affordable prices
for your enchantment

6508 Rancho Ladera Road NE
Albuquerque, New Mexico 87113

Phone/Fax: (505) 821-4276

email: lulutoth7@aol.com

registered New Mexico small business
since 1993

Jerome Nuñez
Owner

A FEW OF MY FAVORITE BEADS
Seed Beads • Delicas
Swarovski Crystals & Pearls
Fire Polish, Daggers & More

10137 Edith Blvd. NE
Albuquerque, NM 87113

(505) 974-1645

No additional discount for BSNM members

Beads • Findings • Classes

The Beaded Iris

(505) 299-1856
1512-F Wyoming Blvd. NE (N of I-40 at Constitution)
Albuquerque, NM 87112
www.thebeadediris.com

10% discount for BSNM members

Baskets of Africa.com
info@basketsofafrica.com

1-505-323-2315 – Local
1-800-504-4656 – Toll Free

Visit Our Showroom:
Open 10-3 Mon-Fri

1714 Eubank Blvd NE
Albuquerque, NM

FAIR TRADE
ASSOCIATION
MEMBER

15% discount for BSNM members

STONE MOUNTAIN
BEAD GALLERY

Beads, Jewelry &
Handicrafts of the World

Voted Albuquerque's Best Bead Shop!

Robert Spindling - owner

4008 Central Ave SE
Albuquerque, NM 87108 505-260-1121

Mon-Sat 11-6 Sun 12:30-4:30
www.stonemountainbeadgallery.com

30% discount for BSNM members

Beads and Beyond by Betty
Designer
Betty Smith
bettygardens@gmail.com
520-405-8142
www.BeadsandBeyondbyBetty.com

Cynthia A. Romero
Tax Preparation & Planning
Bookkeeping & Payroll Services

(505) 296-0521
(505) 263-3646
Romero111@msn.com

Member NATP

Get Your BSNM Discount

To get your BSNM discount at our business members' stores, you must show your current membership card. They won't accept expired cards or membership renewal emails or a letter from your mom!

Don't lose out. Be sure you have your 2022 BSNM membership card and show it when you make a purchase.

Procedure for Submitting Articles for Publication

Producing a quality monthly publication as well as maintaining an up-to-date website and Facebook page is not an easy task. We have three people who work hard to ensure that our members have the most timely and accurate **information possible. But these tasks take lots of time and can't be done properly without the assistance of our members.** Please remember to follow these procedures when submitting information to be shared with the general membership:

- Send all information to beadsocietynm@gmail.com
- Please send just one topic per email and be sure to include the topic in the subject line and indicate that the topic is for publication.
- Do not send articles or information as a response to another email; send a new, separate email.
- Be sure that any artwork, etc., you send is copy-ready in a format that can easily be downloaded and copied – preferably as an attachment (JPG, TIF, or PNG, or incorporated into a Word document).
- Please send complete information. The members of the Communications Committee are not mind readers. ☺ Please provide full names of persons, full addresses and contact information, dates and times, etc.
- Information to be included in the Newsletter MUST be received no later than the 20th of the prior month. Information received after that date will be shared via social media and on the BSNM website, and used for **the following month's publication if appropriate.**

2023 Board of Directors

The Board of Directors currently meets on the second Tuesday of the month in person.

Members are welcome to attend.

President	Barbara Rosen
First Vice President - Special Events and Workshops.....	
Second Vice President – Programs.....	Pat Verrelle
Treasurer	Deb Cole
Secretary	Helen Yackel
Membership Chair	Deb Cole and Barbara Rosen
Newsletter Editor	Jill Bartel
Volunteer Coordinator.....	
Member-at-Large	Laurye Tanner
Past President.....	
Webmaster.....	Amanda Archuleta
Social Media Manager	
Photographer.....	Pam Troutman
Historian	
Meeting Coordinator	Claudette Jaramillo and Mia Seitz
Membership Recruiter.....	
Fiber Arts Council Representative.....	
Fiber Arts Education Committee Representative	Elizabeth (Liz) Reisinger

Copyright © 2023 Bead Society of New Mexico. All rights reserved.

Address: Bead Society of New Mexico, P.O. Box 91655, Albuquerque, New Mexico 87199

Website: www.beadsocietynm.org

Facebook: <https://www.facebook.com/BeadSocietyNM/>

Contact email: beadsocietynm@gmail.com

You are receiving this newsletter because you opted in at beadsocietynm.org.