



# BSNM Newsletter

March 2022

The mission of this newsletter is to inform our members of the activities, events, and classes in the local beading community and to provide a forum where members can share beading knowledge and techniques.

## In This Issue

Message from the President  
Upcoming Events  
March Raffle Basket  
Renew Your Dues  
March Raffle Basket  
Volunteering with BSNM  
Jan Bond's Beads  
BSNM Fiber Arts Fiesta 2022 Challenge  
Lampwork Glass Beads  
Catching Up with Laurie Tanner  
Members' Creations  
Support Our Local Businesses  
Beading Groups  
Gem of the Month  
Personalities Plus  
Museum of Beadwork Call for Entries  
New Beadwork Books  
Art Exhibits  
Paula Adams Estate  
Keep in Your Thoughts  
BSNM Financials Available on Website  
2022 BSNM Calendar  
Procedure for Submitting for Publication  
2022 Board of Directors

This newsletter welcomes new ideas from members and solicits articles and items of interest. Any special events taking place in your life (birthdays, anniversaries, condolences needed, new job, moving, births, weddings, awards, trips, transitions, etc.)? All manuscripts are subject to editing. The editor does not assume responsibility for the accuracy of information contained in the articles received. Please send all contributions for the newsletter to the editor in care of the Bead Society of New Mexico.

## From the President

Dear Members,

I hope this message finds everyone looking forward to Spring. I know I am!

The February Bead Swap had fewer attendees than in the past. Perhaps it was COVID. Watch for more information on another Bead Swap later this year.

The Bead Society has a number of classes and presentations in the coming months that I hope will inspire you. Information is in this month's newsletter. There's also the **Whole Bead Show Santa Fe, March 24-27 at the Santa Fe Community Convention Center**. There is no fee to enter, so you can save your money to buy all the beads, baubles, and findings your hearts' desire!

At our **March 15th general meeting, Diane Castillo will give a short presentation on wire weaving**. Diane is the owner of DTC Southwest Designs and creates unique, artistic jewelry using a combination of wire weaving, gemstones, and beads. Diane will be teaching a wire weaving class in April. See Upcoming Events in this newsletter for details.

We all like to bead together, so **at our March meeting we will be making bracelets and earrings** (also known as doo-dahs) that will be sold at Fiber Arts to help support Roadrunner Foodbank. We will have some beads, findings, and wire available to work with. Please bring any beads, findings, and wire you would like to use or donate. Be sure to bring your tools (pliers, wire cutters, etc.) and a bead tray or mat to work on.

### Upcoming Classes:

- On **March 5th, Liz Sands will teach her Sweetheart Pendant and Earrings class** from 1pm to 5pm at the Heights Cumberland Presbyterian Church. There are more details and you can still sign up on our website.
- On **April 25th, Diane Castillo will teach her Wire Weaving class** from 1pm to 3pm at Mama's Minerals, 800 20th St., NW in Old Town. This is a beginner class. You can sign up at the meeting or online in the near future.

**Fiber Arts Fiesta** will be held **March April 14-15 at the Manuel Lujan Building at the New Mexico State Fairgrounds**. The Fiesta is a multi-guild effort, and did you know the Bead Society is one of the guilds? The theme for this year's Fiesta is "Fiber Fantasies." **Each guild provides General Volunteers that serve as rovers and booth sitters, and Booth Volunteers that will represent the Bead Society in our booth, talk about what we do, and demonstrate some of our skills.** And hopefully attract new members! You also have an opportunity to display your work. Send an email to [beadsocietynm@gmail.com](mailto:beadsocietynm@gmail.com) if you would like to be part of the display and someone will get back to you. You can sign-up for either or both of these at our next meeting or on our website at [www.beadsocietynm.org](http://www.beadsocietynm.org).

And lastly, **please renew your membership**. The Bead Society uses your dues to offset the expenses of running a non-profit organization and to bring you the wonderful programs that we have. If you would like to see details of our finances, login to the website, click on the Members Only link, and there you will find Treasurer's Reports.

### Happy beading!

Barbara Rosen, BSNM President, 301-351-3303,  
[beadsocietynm@gmail.com](mailto:beadsocietynm@gmail.com), [www.beadsocietynm.org](http://www.beadsocietynm.org),  
[www.facebook.com/BeadSocietyNM/](https://www.facebook.com/BeadSocietyNM/)



## Upcoming Events

**March 5**

### Sweetheart Pendant and Earrings Class

**Saturday, March 5, 2022 1:00 pm to 5:00 pm**  
**Heights Cumberland Presbyterian Church,**  
**8600 Academy Rd. NE**  
**Education Building, Room 402**

BSNM member Liz Sands will teach this beading and freestyle bead embroidery class.

**Class fee:** \$55

**Kit fee:** \$46. Kit includes one 28mm focal piece; glass flower beads (various sizes and colors); teacup beads; size 11 seed beads in red and gold; size 15 seed beads in red and gold; size 8 seed beads in red, pink, and white; white pearls; 3mm Czech fire polish beads; interface and backing; cording for necklace; two ear wires; and two head pins.

**Students need to bring:** 6-lb. FireLine in crystal; glue (Aleens tacky glue or E-6000); size 11 and 12 beading needles; scissors; wire cutters; round-nose pliers; flat-nose pliers; work surface (such as a bead mat); beading light and extension cord; toothpicks  
 Class size is limited. **Masks are required.**

**March 9**

### Board Meeting

**Wednesday, March 9, 2022 11:30 am to 1:30 pm**

The Board will meet to conduct the business of the bead society. Board members, please plan to attend.

**March 15**  
**correction!**

### General Meeting

**Tuesday, March 15, 2022 6:00 pm to 8:00 pm**  
**(set-up, social time, and buying raffle tickets beginning at 5:30 pm)**  
**Heights Cumberland Presbyterian Church, 8600 Academy Rd. NE**

We will have a brief business meeting –including a short wire-weaving presentation by Diane Castillo – and then we will make “doo-dahs” (bracelets and earrings) for the Fiber Arts Fiesta. These doo-dahs will be sold at the Fiesta for \$5 each to benefit Roadrunner Food Bank.

**You need to bring:** chain-nose pliers, round-nose pliers, wire cutters, memory wire cutters (if you have them), crimping pliers (if you have them)

**Also bring** any findings (head pins, ear wires, lobster claw clasps, crimps), stringing material, and beads you want to make with or donate.

**Personalities Plus:** Mary Ellen Merrigan will be collecting donations of new and gently used purses, jewelry, and scarves, as well as new travel-size toiletries. See article in this newsletter for more details.

**Masks are required.** We must wipe down the tables and must be out of the room by 8:30 pm.

**March 18-20**

### Treasures of the Earth Show

**Friday-Sunday, March 18-20, 2022**  
**10am to 6pm on Friday and Saturday; 10am to 5pm on Sunday**  
**New Mexico State Fairgrounds, Creative Arts Center**

Admission is \$5.00 (plus parking), except Friday is “2 DOLLAR DAY.” Children under 13 are FREE.

We'll have over 50 dealers. You will find gems (crystals, faceted, cabs, rough, and set in jewelry), decorator items, jewelry, books and supplies, beads, and lots more. We'll have a mineral ID Booth, an educational booth from the NM Bureau of Geology and Mineral Resources (a display, as well as maps, books, and guidebooks), stuff for kids, and three silent auctions per day.

**March 25-27**

### Whole Bead Show

**Friday-Sunday, March 25-27, 2022**  
**10am to 6pm on Friday and Saturday; 11am to 4pm on Sunday**  
**Santa Fe Community Convention Center, 201 W. Marcy St., Santa Fe**

**Admission** is free.

**Parking:** Santa Fe Community Convention Center Municipal Garage, 119 South Federal Place. Hours: Daily, 7 a.m. to 12 midnight. Rates: \$1 for the first hour, \$2 for the second hour and each hour after. \$12 maximum

**Masks are required to be worn at all times while indoors at the Santa Fe Community Center, regardless of vaccination status.**

Check out all the details, including a list of vendors and classes, at <https://wholebead.com/showsf22/>

## Upcoming Events

**April 14-16**

### Fiber Arts Fiesta 2022

**Friday-Sunday, April 14-16, 2022**

**New Mexico State Fairgrounds, Manuel Lujan Building**

The Albuquerque Fiber Arts Council presents Fiber Arts Fiesta, a biennial fiber art event showcasing a wide variety of fiber art exhibits, classes, vendors, and special events. BSNM finds sponsors for the awards for the beadwork entries; and provides volunteers to staff the bead exhibits, help out as rovers and booth sitters, and serve as instructors in classes attended by the public.

Local and national artists will be displaying their take on the "Fiber Fantasies" theme with work in 15 different categories. Local guild displays, an exciting array of vendors, featured artists, educational displays, and hands-on classes to help you learn a new skill or take your current skills to the next level!

**We will have volunteer sign up lists at the March general member meeting.** It is a great way to meet new people, reconnect with old acquaintances, and be thoroughly inspired by the creativity that abounds at the Fiesta.

Read the details about the BSNM education display and competitions in this newsletter. If you have any questions, please contact Liz Reisinger at [lizreisinger1@gmail.com](mailto:lizreisinger1@gmail.com) or (505) 977-3990

**April 23**

### Wire Weaving Class

**Saturday, April 23, 2022 1:00 pm to 3:00 pm**

**Mama's Minerals, 800 20th St NW, Albuquerque**

Diane Castillo will teach this wire weaving class. She is the owner and jeweler for DTC Southwest Designs. Diane has been designing unique, artistic jewelry for over 10 years. Her work combines a blend of intricate wire weaving and the use of gemstones and beads to accentuate the full artistic expression of each piece.

Have you ever wanted to try out wire weaving? Or have you thought about how wire weaving might add to your existing artistic talents? This 2-hour basic wire weaving class will cover types and characteristics of wire (including how/where to purchase), followed by practice in two basic wire-weaving techniques (coil, 3-2 weave, and variations), and the creation of a silver wire-weave heart pendant with an amethyst round, which participants will take home. If time allows, additional weave patterns will be practiced. Instructor will demonstrate and provide in a step-by-step directions and written instructions will be provided. Examples of other weave patterns will be shown in completed works by the instructor, some available for purchase. This class is for the beginner and assumes little to no knowledge of wire work.

**Class fee: \$65.**

**Kit fee: \$20.** Kit includes enough wire to practice weaves and patterns and to complete one heart pendant with amethyst round bead (and enough to complete 2nd heart pendant without bead at home). (If participants choose to purchase materials rather than kit, please bring to class one packet of 20-gauge dead-soft silver-plated wire; one packet of 26-gauge dead-soft silver-plated wire; and one 4mm drilled round bead.)

**Students need to bring:** Flat needle-nose pliers (not ridged); round-nose pliers; wire cutters (instructor will bring extra); small scissors; flat 12" ruler; small cotton cloth (wash cloth or scrap t-shirt). Optional: metal file.

Class size is limited. **Masks are required.**



**June**

### Lariat Necklace and Earrings Class

**Date, time, and location TBD**

BSNM member Nan Card will teach this gorgeous stringing project. More details to come!  
Class size is limited.

## Happy Mardi Gras

This year, Mardi Gras – the day before Lent begins – is Tuesday, March 1. Be sure to wear your purple, gold, and green beads to celebrate.



## March Raffle Basket

Be sure to buy your raffle tickets for a chance to win the **Green Goddess raffle basket**. Green is associated with gardens, spring, the countryside, and being environmentally friendly. Whatever shade of green you prefer – lime green, blue green, grey green, grass green – your inner goddess is sure to be inspired with this collection of beads, jewelry, and other items (worth at least \$75). And remember: Create like a goddess, command like a queen, work like a mother.

This basket includes:

- Vintage Swarovski crystals
- Vintage Czech crystals
- Czech glass beads, seed beads, and glass pearls
- Chinese glass beads
- Tagua nut beads (dyed)
- Mother of pearl chips (dyed)
- Stone beads
- Large moss agate cabochon
- Dichroic glass pendant by Paula Radke
- Carved ribbon jasper pendant (can also be used for bead embroidery)
- Metal bird pendant
- Two cards of silk beading cord (with attached needle)
- Chain-nose pliers
- Two necklace and earring sets (never worn; can be worn as is or deconstructed for parts)
- BSNM tote bag (lime green)

(Portions of this raffle basket were donated by Jill Bartel, Julie Fear, Deb Novak, and Pat Verrelle.)

## Renew Your Dues

**A friendly reminder to renew your annual membership to continue receiving the full benefits from BSNM (such as buying and selling at the annual swap meet; reduced-price classes; special sales from our business members; and field trips).** We need your support this year for the future of the Bead Society.

Cost is \$35 for individual membership, \$45 for household membership, \$55 to \$200 for business membership (depending on desired level).

You can renew with a credit card on our website, [www.beadsocietynm.org/](http://www.beadsocietynm.org/). (This is a secure website.)

Or mail your check to:

Bead Society of New Mexico  
Attention: Treasurer  
P.O. Box 91655  
Albuquerque, New Mexico 87199

## Volunteering with BSNM

Running an organization of this size requires volunteers with all sorts of talents. **WE NEED YOU** to step up and assist us in many different ways, yet not be so demanding of your time and energy that you would hesitate to commit. Some of you have already "signed on" when asked.

**We still need volunteers for the following:**

- Fiber Arts Fiesta
- Several BSNM Board positions

**Mentoring New Volunteers:** If you would like to volunteer for any level of participation in the group, **but you're concerned that you don't know how to do it**, (a board position perhaps), let us know and we will explain what the various jobs entail in terms of commitment, time expended, etc. And someone who knows what it takes will work with you to train you. **If you're up for it, email the Bead Society at [beadsocietynm@gmail.com](mailto:beadsocietynm@gmail.com).**

## Jan Bond Selling Her Beads

by Pat Verrelle

Jan Bond, who has been a BSNM member since 1998, is moving to Texas to live near her son and daughter-in-law. Jan has been an amazing long-time, supportive member of BSNM. Jan and Linda Reyes-Alicea have worked together through the years. Jan is a very creative and successful bead artist and she uses many mediums. Her favorite is bead embroidery and beautifully designed necklaces with precious and semi-precious stones with gold and silver.

Before she leaves Albuquerque, Jan is looking to sell her Delicas (over 4,000 grams), seed beads (over 13,000 grams), bugle beads (over 500 grams), and vintage Czech glass beads (over 6,000 grams). She is selling them for 20 cents a gram. **Jan wants to sell them in lots (such as all the seed beads or all the Delicas) rather than piecemeal – and she needs to sell everything quickly since she is leaving Albuquerque by the end of March 2022.** If you are interested, contact Jan at 505-323-2581 or [janbond40@gmail.com](mailto:janbond40@gmail.com)

Jan has left her magnificent stone collection and findings to Linda to sell in April. Linda will notify the BSNM when this will occur.

We wish Jan the best of luck in her new adventurous life with her husband Ron. I will miss her and her support!





## BSNM Challenge for Fiber Arts Education Display

### Last Chance to Enter!!

For all you procrastinators out there, you have until March 15 to finish your entry for this challenge. Remember, we are not necessarily looking for finished jewelry. "Color Fantasy" is the overall theme.

Due to space limitations for our display, pieces must be kept to a **size limit of 4"x4"x4" (maximum length, width, and height)**:

- Any **individual or combination of metallics** (gold, silver, copper, bronze, gunmetal, etc.) can be used; and if desired, pink can also be included. (No other colors are allowed as the other guilds are using the other colors.)
- Pieces must incorporate the overall display theme of "Fantasy."
- **Any technique** (such as bead weaving, stringing, mixed media) or material (such as glass, metal, fabric, leather) may be used.

### Pieces must be submitted on or before the general meeting on March 15, 2022

for consideration by the BSNM review team. Be sure your piece is clearly marked with your name, email address, phone number, and a description of the piece.

This challenge is an internal BSNM challenge and is not an official part of the Fiber Arts Fiesta 2022. Prizes will be awarded based on popular vote at the March meeting.

Following are the entries already received for this challenge. Let them inspire you to enter!



Beaded flowers and butterfly  
(silver beads and wire)



Hair barrettes (copper with gemstones)



Decoupage beads (gold, silver, and copper)



Beaded sculpture  
(brass, silver/gunmetal, copper, and pale pink)





Beaded bracelets (gold, silver, copper, and gunmetal)



Bead woven bracelets  
(combinations of gold, silver, copper, and pink)



Fantasy flower (polymer clay)



Memory wire bracelets  
(copper, silver, gold/brass, and tricolor)

## Lampwork Glass Beads

If you're interested in making, or just admiring, lampwork glass beads, the following books will get you started:

*1000 Glass Beads: Innovation & Imagination in Contemporary Glass Beadmaking* by Valerie Arsdale Shrader

*The Art & Soul of Glass Beads: 14 Bead Artists Share Their Inspiration & Methods* by Susan Ray and Richard Pearce

*Beads of Glass* by Cindy Jenkins

*Making Glass Beads* by Cindy Jenkins

*Passing the Flame – A Beadmaker's Guide to Detail and Design* by Corina Tettinger

*Contemporary Lampworking: A Practical Guide to Shaping Glass in the Flame (2 vol.set)* by Bandhu Scott Dunham

*Glass Notes: A Reference for the Glass Artist* by Henry Halem

*A Glassblower's Companion: A Compilation of Studio Equipment Designs, Essays, & Glassblowing Ideas* by Dudley F. Giverson, Fritz Dreisbach, and Linda Burdick

*Lampwork Beads: The Book* by Alice Foster Zimmerman (out of print)

"As you get older,  
you should continue to exercise.  
Or is that accessorize? Whatever."

from *If It's Not About Me, I'm Busy:*  
*Pearl's Guide to Living Large and Having a*  
*Stunning Shoe Wardrobe* by Eric Scott



## Catching Up with Laurye Tanner

photos by Pat Verrelle

Recently, Pat Verrelle visited Laurye Tanner to deliver the glass globe/sculpture that Laurye won for her entry in the 1920s jewelry challenge at the January Roaring Twenties gala. Always interested in the beadwork of other members, Pat hung out with Laurye and took photos of her bead studio and some of her work.



Laurye showing off her prize.



Laurye showing off her bead studio.



Laurye's work table, where she uses her Bead Board Extraordinaire purchased from BSNM.



Laurye's window sill provides perfect light for her creative stone necklaces.





Rising Phoenix necklace



Starfish necklace



Puffy star necklace



Laurye just finished this necklace for her friend's daughter's Quinceanera party.



Laurye's beaded wall hangings of an Indian princess, chief, and elderly couple (reflecting on how precious life really is!).



## Members' Creations

Here are some creative endeavors by our members. To share your work in the newsletter, **please send a photo and description by the 20th of the month** to [beadsocietynm@gmail.com](mailto:beadsocietynm@gmail.com).



Nancy Elliot completed her Painted Lady pendant (from a class taught by Caroline Bleil).



Pat Verrelle's foiled glass hearts bracelet and earrings – nearly finished.



A long necklace by Pat Verrelle with a large, oval quartz stone wrapped in silver as the pendant.



Jill Bartel's "Girl Talk" wrap necklace (about 60 inches long) is her entry in the White+One challenge at Fiber Arts Fiesta 2022.

## Support Our Local Businesses

**A Few of My Favorite Beads:** We have 2mm round crystals in glorious colors and 3mm rondelles in great colors. Call (505) 974-1645 or come by to see our latest beads.



**Baskets of Africa:** If you don't see exactly what you want on our website, contact us and we'll search the baskets in our warehouse to see if we can find just what you're looking for. Thank you for supporting these fantastic weavers and their families. (505) 323-2315 or go to [info@basketsafrica.com](mailto:info@basketsafrica.com).

**Beadweaver of Santa Fe:** We are still offering a 10% discount to BSNM members.

**The Beaded Iris:** We are offering 10% discount to BSNM members, as well as our punch cards for future savings. **Also check out our new classes!** Come on into the store and rediscover all the beads, crystals, delicats, findings, thread, and other products you need to complete your beautiful project. **Open beading on Wednesdays.** Store hours are Mon. through Thurs. 10am to 5pm; Fri. through Sat. 10am to 4pm. We will be glad to make an appointment if these hours do not accommodate your schedule or special needs. To schedule an appointment, call 505-299-1856 or email us at [beadedirisstore@aol.com](mailto:beadedirisstore@aol.com).

**Glorianna's Beads (Santa Fe):** 70 West Marcy Street, Suite B. Phone: (505) 982-0353. Open Tues-Wed and Fri-Sun 10:30am to 4pm.

**Mama's Minerals:** Bead Society members get 15% off on regular-priced merchandise. You can buy beads in bulk every day for up to 25% off. Larger discounts up to 30% off our newly restocked clearance beads. **Mama's Minerals** proudly supports local artists, featuring handmade consignment jewelry by Karl Brazzil and Claire Sweeney. [www.MamasMinerals.com](http://www.MamasMinerals.com).

**Meltdown Studio:** "Make it at Meltdown." No previous experience required to take our classes. Check out our current classes (Earth Day earrings, botanical amulet, multi-stone slide bracelet, and more) at <https://www.meltdownstudio.com/group-classes-1>.

**New Mexico Bead Company:** New Mexico Bead Company (formerly New Mexico Bead and Fetish) currently only has online sales. They have stone beads, seed beads, fetishes, crystals, and more available on their website: <https://www.nmbead.com/>.

**Santa Fe Jewelers Supply:** Open 9:00am to 5:00pm. Curbside pickup, mail order, or visit our showroom today! Order on our website at [www.sfjs.net](http://www.sfjs.net) day or night. Phone: 505-988-9157.

**Stone Mountain Bead Gallery:** We're open Mon. through Sat. from 11am to 6pm; Sun. 12:30pm to 4:30pm. Call 505-385-2200 to arrange contactless pickup. **30% off on glass beads and 20% off other items for BSNM members.** We have Swarovski crystals! Also, modern chevron beads hand made by Art Seymour.

**Thomason Stone Supply:** We're having our "After Tucson Sale" on March 12th from 10am-5pm. Everything (with the exception of a few "net" items) will be 10% off including the new things that won't be put out until that day. Cool stuff like shungite, kunzite, and kyanite beads! Store hours are Mon. through Sat. 9am to 5pm. You can place an order by calling us at 888-353-9934 or 505-268-9934, or by filling out a contact form on our website, <https://www.thomasonstonesupply.com/>.

**Thunderbird Supply Company: Super Sale Days – Friday, March 4 – Saturday, March 5, 2022 (in-store only).** See our website (<https://www.thunderbirdsupply.com/>) for online and in-store specials. Store hours: Mon.-Fri. 9am-6pm; Sat. 10am-5pm.

**Treasures of the Gypsy/Gypsy Raven:** Treasures of the Gypsy Show Room is open by appointment, as well as for classes. Please contact Pamela Armas to schedule your appointment at 505-847-0963, or email her at [gypsytreasures@cs.com](mailto:gypsytreasures@cs.com)

## Beading Groups

**Bosque Farms:** Do you live in the Bosque Farms area? Join BSNM member Kathy Jost at the Bosque Farms Community Center for the **BFCC Bead Group on the 2nd and 4th Thursday of the month from 2:00 pm to 5:00 pm.** Bosque Farms Community Center is located at 950 N Bosque Loop in Bosque Farms, New Mexico. Phone: (505) 869-5133.

**Placitas:** Several members of BSNM meet **each Thursday from 12:30 pm to 3:30 pm at the Placitas Senior/Community Center** at 41 Camino de la Huertas in Placitas, New Mexico. Come early and have lunch with some of us!

 **Happy**   
**St. Patrick's Day!**



## Gem of the Month – Fluorite

Fluorite (also called fluorspar) is one of the most common minerals on Earth and is the mineral form of calcium fluoride. In modern times, the word "fluorspar" is most commonly used for fluorite as the industrial and chemical commodity, while "fluorite" is used mineralogically and in most other senses.

The word fluorite is derived from the Latin verb *fluere*, meaning **to flow**. The mineral is used as a flux in iron smelting to decrease the viscosity of slag.

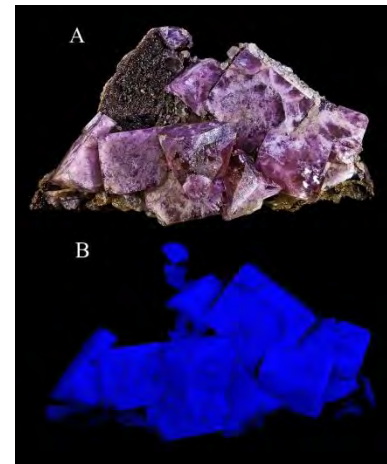
Fluorite is allochromatic, meaning that it can be tinted with elemental impurities. Fluorite comes in a wide range of colors and has consequently been dubbed "the most colorful mineral in the world." Every color of the rainbow in various shades is represented by fluorite samples, along with white, black, and clear crystals. The most common colors are purple, blue, green, yellow, or colorless. Less common are pink, red, white, brown, and black. Color zoning or banding is common. The color of the fluorite is determined by impurities, exposure to radiation, and the absence of voids of the color centers. Green-and-purple fluorite is a mixture of two of the most common colors. Every piece is individual, some with bands of the two colors, others with a flowing interplay of the different shades.



Green-and-purple fluorite



Transparent teal color fluorite with purple highlights  
Many samples of fluorite exhibit fluorescence under ultraviolet light, a property that takes its name from fluorite.



Fluorescing fluorite from Boltsburn Mine, Weardale, North Pennines, County Durham, England, UK

Pure fluorite is colorless and transparent, both in visible and ultraviolet light, but impurities usually make it a colorful mineral and the stone has ornamental and lapidary uses. Industrially, fluorite is used as a flux for smelting, and in the production of certain glasses and enamels. The purest grades of fluorite are a source of fluoride for hydrofluoric acid manufacture, which is the intermediate source of most fluorine-containing fine chemicals. Optically clear transparent fluorite lenses have low dispersion, so lenses made from it exhibit less chromatic aberration, making them valuable in microscopes and telescopes. Fluorite optics are also usable in the far-ultraviolet and mid-infrared ranges, where conventional glasses are too opaque for use.

Fluorite may be drilled into beads and used in jewelry, although due to its relative softness it is not widely used as a semiprecious stone. It is also used for ornamental carvings, with expert carvings taking advantage of the stone's zonation. Polished green-and-purple fluorite is beautifully translucent with a soft luster – especially attractive when set in jewelry.

Wear fluorite to bring peace and joy into your life and enhance relaxation. It helps to calm and relax body and mind, and ease physical or emotional stress. Green fluorite clears the mind and encourages creative **thinking in line with the heart's deepest desires.**

Fluorite is a gemstone for the zodiac sign of Pisces (February 19 through March 20).

Fluorite is mainly found in South Africa, China, Mexico, Mongolia, the United Kingdom, the United States, Canada, Tanzania, Rwanda, and Argentina.

**"Keeping house is like stringing beads  
with no knot in the end of the thread."**

**— Anonymous**

## Pursonalities Plus ABQ Creates a Better Tomorrow for Women in Need

by Mary Ellen Merrigan

Spring cleaning? In the next few weeks you can help Pursonalities Plus ABQ. The group needs gently used purses, backpacks, and scarves, as well as new travel-size toiletries for Mother's Day. **Bring any items you wish to donate to BSNM's March meeting** and Mary Ellen Merrigan will collect it for the group.

The Pursonalities Plus ABQ deadline for Mother's Day is April 15, 2022, the date of the April BSNM meeting. (For a full listing of all that goes into each purse, see the organization's Facebook page at [https://www.facebook.com/Pursonalities-Plus-ABQ-269909590192341/?ref=page\\_internal](https://www.facebook.com/Pursonalities-Plus-ABQ-269909590192341/?ref=page_internal).) BSNM's program for April features Jane Bickelman, co-founder of Pursonalities Plus ABQ. Jane has a boatload of heartwarming stories about the 6-year effort.



Each purse gets a scarf and a tag before being placed in a box for delivery to the recipient organization.

Many of you have contributed jewelry, both new and gently used. Thank you! Each purse includes a cellophane bag with earrings, necklace, and bracelet curated by BSNM's Mary Ellen Merrigan and a group of volunteers. As always, your contributions are welcomed.

For more information, go to Pursonalities Plus ABQ website at <https://www.facebook.com/Pursonalities-Plus-ABQ-269909590192341/>.



BSNM's Julie Fear (second from left) participated with the Rio Rancho Rotary Club to gather purses and donations for October's Domestic Violence Month, when Pursonalities Plus ABQ delivered almost 100 purses.



Carol, a volunteer, tags backpacks for young mothers during the Christmas donation period.



All of the work is done by volunteers in a space donated last year by Fellowship Christian Reformed Church, 4800 Indian School NE. This is the celebration last November when the Christmas goal of 500 purses was met and exceeded – in 2021, the group delivered 1,858 purses!



## Museum of Beadwork Call for Entries

<https://www.museumofbeadwork.org/pages/enter-the-stars?fbclid=IwAR246OHmt5OdwSI0GUqSxSJ1wWtve7ZKQu8Sv7xq1OBNsNvOMZQeSFcEVr4>



### Join the Museum of Beadwork in their annual Collaborative Community Project!

How it works: Each year we ask artists to contribute a beaded item of a specific theme. We install these collected items in an exhibition highlighting the power of people coming together for the purpose of community and creation. The exhibition is then on display for roughly a year. Once finished, the individual items are used in fundraising efforts for the Museum supporting the staff, development, and programs of this community-based institution.

The theme for this year is "Enter the Stars" and we would like you to make and send in a beaded star that will be part of an installation exhibit in our gallery entryway. Help us decorate this space with a sky of stars. It will be our opening year, and we want to highlight every one of you that made this opening possible as the stars you are.



Image courtesy of Deborah Ryan

We invite you, no matter your experience, style, or technique, to make a star and send it to us.

### Guidelines:

- **Stars can be anywhere between 2" in any direction to 10" in any direction.**
- As the stars will be hung, 3-dimensional is best, but we are not discouraging 2D as long as they do not fold under their own weight.
- Use of an armature, framework, or solid structure to bead upon is acceptable.
- Each star needs to have a loop of material or jump ring at the top for them to be hung from.
- Found materials are acceptable but we ask that the stars are at least 70% beads.
- No color requirements.

- Original designs are preferred. It is up to the beader (you) to know whether a pattern you have purchased is donatable. Please also include the name of the designer so credit can be given where it is due.
- Feel free to send us as many as you like. In fact, the more the better!

**Please mail them to us no later than May 1, 2022.**

When mailing, please include:

- Your star(s).
- Your name, town/state/country, and age (if you wish to share).
- Whether or not you would like to be listed as a contributing artist.
- Mail to:  
Museum of Beadwork  
915 Forest Avenue  
Portland, Maine 04103

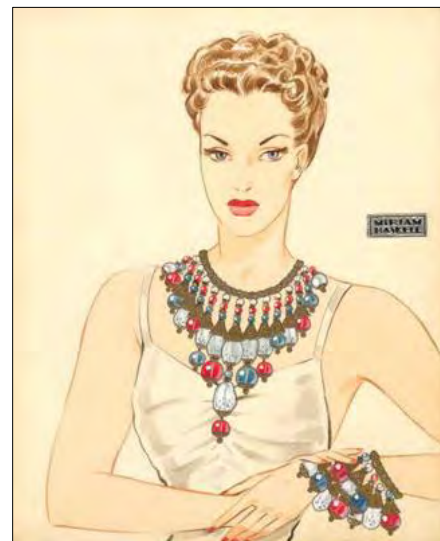
The final installation will largely depend on how many individual stars we receive.

Being in the entryway, this will be the first exhibit that visitors will see when they enter the Museum and with your help, we plan to make it shine!!

### \* Fine print, please read!

Upon receiving, the stars become the property of the Museum of Beadwork. They are intended to be on display at the Museum of Beadwork as an installation for roughly a year before becoming part of an annual fundraising effort for the MOB. Individual stars will not be returned.

All submissions to this project become the full property of the Museum of Beadwork and can be used by that institution in any lawful way including (but not limited to) publicity, marketing, publication, exhibitions, sale, etc. in perpetuity. All proceeds resulting from this project will go to support the Museum of Beadwork and its mission.



## New Beadwork Books

### ***How to Stitch 3D Peyote Beaded Stars: Tutorial for Beginners***

by Natalee Alex



This book offers detailed instructions on how to make beautiful beaded stars. In this book you will find 15 ideas for making stars with beads. They are divided into 5 triples. Each trio has a large, medium, and small star.

The designs of these stars are not only suitable for Christmas, but also for other holidays. Or you can simply wear it on your bag or as a necklace or earrings.

This book is a great gift for the beginning beadworker.

This 8.5-inch by 0.17-inch by 11-inch paperback book was independently published in January 2022. It has 72 pages. The list price is \$24.99 on Amazon.

### ***How to Stitch 3D Peyote Beaded Stars: Tutorial for Beginners***

by Natalee Alex



This book offers detailed instructions on how to make beautiful beaded stars. In this book you will find 30 ideas (10 projects in 3 sizes – large, medium, and small) for making stars with seed beads.

The designs of these stars are not only suitable for Christmas, but also for other holidays. Or you can simply wear it on your bag or as a necklace or earrings.

This book is a great gift for the beginning beadworker.

This 8.5-inch by 0.27-inch by 11-inch paperback book was independently published in January 2022. It has 113 pages. The list price is \$29.99 on Amazon.

## Paula Adams Estate

Paula Adams' beautiful beaded amulet necklaces are for sale at The Beaded Iris. All proceeds go to Paula, who is in assisted living in Albuquerque. Paula taught beading at the original Poppy Fields. Her attention to detail is very evident in her work.



## Fundraiser for Barbara Butcher

Barbara Butcher, who has been battling cancer, had a stroke earlier this year that left her with limited use of her right arm and leg. Consequently, she will probably need 24-hour assistance going forward.

To help combat this expense, Jerome Nunez of A Few of My Favorite Beads has volunteered to sell the leftover stock from Barbara's former store, The Beading Heart of Santa Fe. **Sales are cash only. All monies will go to Barbara for her medical expenses.**

**You must make an appointment to purchase these beads. Please call Jerome at (505) 974-1645.**

Jerome says he can accommodate appointments 7 days a week, beginning at about 11am, but says that Wednesdays are probably the best days.

**All items are upstairs at Jerome's store (up a spiral staircase).** If you are unable (or unwilling) to climb the stairs, Jerome said he is willing to bring boxes down to you – if you have an idea of what you are looking for.



## Keep in Your Thoughts

Linda Reyes-Alicea, whose father recently passed away  
Barbara Rosen, who is recovering hand/wrist surgery  
Pat Verrelle, who is recovering from a series of small surgeries

Jamie Welles, whose mother had another stroke

Sally Moore, whose son passed away

Barbara Butcher, former owner of Beading Heart of Santa Fe, who has been undergoing heavy chemotherapy and who requires additional care since her stroke

Indea Sanchez, who has been undergoing intensive chemo treatments for stage 5 gall bladder cancer

Teri Lawson, who is undergoing chemo and radiation treatments for breast cancer

If you would like to send a card or note of encouragement to any of these members, please address the envelope to them **in care of the Bead Society of New Mexico, P.O. Box 91655, Albuquerque, New Mexico 87199**, and we will ensure that they get your messages.

## Happy Birthday

Judi Burkhalter

Deb Cole

Elizabeth (Liz) Reisinger

If your birthday isn't listed here, please let us know at [beadsocietynm@gmail.com](mailto:beadsocietynm@gmail.com) so we can wish you a Happy Birthday!

## Get More Information on the BSNM Website

■ **Classes:** For classes taught by our business members and other non-BSNM-sponsored classes, go to

<https://beadsocietyofnewmexico.wildapricot.org/Bead-Time> for dates, times, and descriptions.

To review class details and to register online, log in to the BSNM website with your email and password and go to the event page

<https://beadsocietyofnewmexico.wildapricot.org/Meetings-Classes-and-Events>.

■ **Craft Shows and Other Events:** To see upcoming shows that our members are involved in, go to the Members Art Shows listing at <https://beadsocietyofnewmexico.wildapricot.org/Art-Shows>. Also, if you have an art show you are participating in, don't forget to send Teresa Kenyon (at [beadsocietynm@gmail.com](mailto:beadsocietynm@gmail.com)) the information and event link so we can include your event.

## BSNM Financials Available on Website

The monthly and annual financial reports for the Bead Society of New Mexico are now available in the "Members Only" section of the BSNM website (you must have/create an account on the website to access these documents). Go to [www.beadsocietynm.org](http://www.beadsocietynm.org) and log in to the website (click on "Log In" in the far upper right corner of the homepage; you need to register first if you haven't done so before). Hover over the "Members Only" section on the right end of the categories bar with your mouse and click on "Financials" in the drop-down menu. Then click on the document you want to read. (You may need to temporarily disable your pop-up blocker since the documents may open in a new window or tab).

## 2022 BSNM Calendar

The following is the calendar for BSNM meetings and events for 2022. Beginning July 2021, our general meetings changed to the 3rd Tuesday at 6pm. Dates and events are subject to change. Bead Times have been cancelled until further notice.

General meeting, 3rd Tues., 6:00pm	Board meeting, 2nd Wed., 11:30am	Classes	Special events
Jan. 18	Jan. 12		Annual gala
Feb. 15	Feb. 9	Flowing River bracelet	Annual bead swap
March 15	March 9	Sweetheart necklace	Make doo-dahs for Fiber Arts
April 19	April 13	Wire weaving	Fiber Arts Fiesta
May 17	May 11		
June 21	June 8	Lariat necklace	
July – no meeting	July 13		Field trip?
August 16	August 10		
Sept. 20	Sept. 14		State Fair; flea market
Oct. 18	Oct. 12		Elections
Nov. 15	Nov. 9		
Dec. – no meeting	Dec. 14		

## Beaders Dream Retreat

### July Virtual Beaders Dream Retreat with Betty Stephan, Jayashree Paramesh, and Shona Bevan

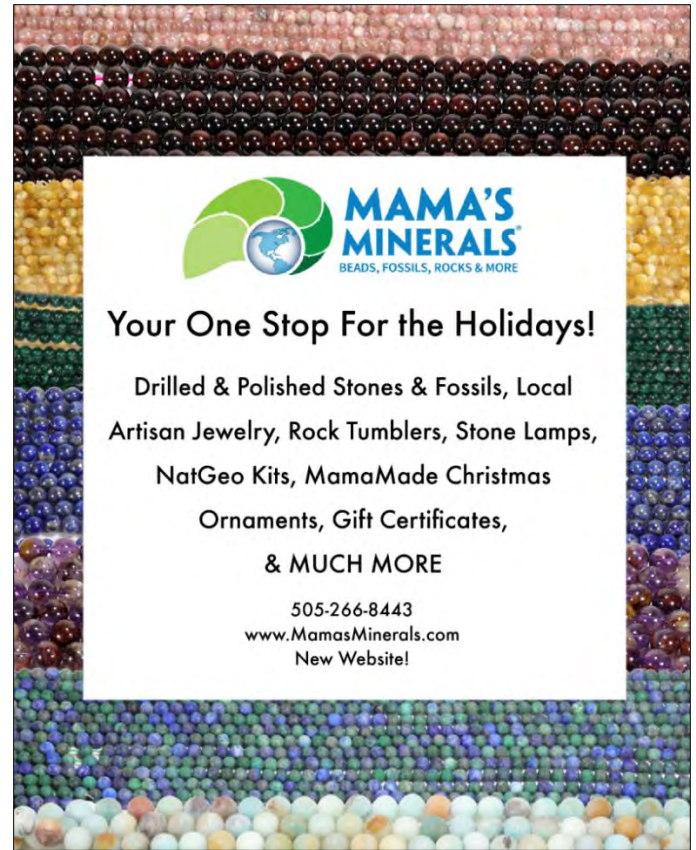
As with our past virtual retreats I am expecting we will sell out quickly, so don't delay if you'd like to join us!


Once you have selected your preference of which weekend you would like to attend you will not be able to change that. So please coordinate with your friends FIRST before submitting the form.

PLEASE - ONLY SUBMIT THE FORM ONCE!

- If you're registering on a handheld device you may need to scroll up to see the notification that we've received your form!
- If the form does not appear for you, you may need to refresh your browser.
- Registrations are processed manually in the order I receive them. PLEASE be patient with me. I will send you a reply email that will either contain a link to pay (your space is not reserved until you pay - you have 24 hours to do so - it is YOUR responsibility to locate the email from me or notify me if you can't locate it) or a note that we've sold out.
- If you have questions please send me an email to [info@BeadersDreamRetreat.com](mailto:info@BeadersDreamRetreat.com)
- DO NOT send me a note in Messenger as I may not see it.
- The registration form is on this page: <http://www.beadersdreamretreat.com/vbdr-registration-july-2022.html>

Good luck everyone!! Becky Haley



 **MAMA'S MINERALS**  
BEADS, FOSSILS, ROCKS & MORE

**Your One Stop For the Holidays!**

Drilled & Polished Stones & Fossils, Local  
Artisan Jewelry, Rock Tumblers, Stone Lamps,  
NatGeo Kits, MamaMade Christmas  
Ornaments, Gift Certificates,  
**& MUCH MORE**

505-266-8443  
[www.MamasMinerals.com](http://www.MamasMinerals.com)  
New Website!

## Glass Exhibit at Museum of Indian Arts and Culture

**May 1, 2021 through June 30, 2022**

The Museum of Indian Arts and Culture  
710 Camino Lejo, Santa Fe, New Mexico  
(on Museum Hill)

*Clearly Indigenous: Native Visions Reimagined in Glass* is a groundbreaking exhibit of works in glass by 33 Indigenous artists, plus leading glass artist Dale Chihuly who introduced glass art to Indian Country.

## Bead Fest 2022

**August 17-20, 2022**

**Lancaster Marriott at Penn Square, Lancaster, PA**

Please reach out to us at [BeadFest@goldenpeakmedia.com](mailto:BeadFest@goldenpeakmedia.com) for any questions or concerns.



We specialize in providing care for clients who need companionship as well as for clients who need end of life care.

### Help For Your Loved One:

- Medication reminders
- Cooking favorite meals
- Total personal care including bathing, dressing, and assisting with hygiene
- Changing bed linens and doing laundry
- Light housekeeping
- Assistance with transportation to doctor's appointments, errands, and shopping

9004 Menaul Blvd NE #11,  
Albuquerque, NM 87112

505-798-0978

Owner: Elizabeth Sands (BSNM member)  
[esands@msn.com](mailto:esands@msn.com)





## DESERT ROSE TRADING

Factory Outlet

Paseo Village Shopping Center 8001 Wyoming Blvd. NE Suite B-5

Albuquerque, NM 87113 • [www.desertrosedirect.com](http://www.desertrosedirect.com)

Open Mon - Sat 10a - 5p • 505.821.6723

**We're Opening**  
**February 28 - March 26**

**Jewelry Up to 70% off**  
**Select Home Decor up to 60% Off**  
**Bead Strands 30% Off**

Check Back For Weekly Giveaways

Receive A Free Stretch Bracelet When You Spend \$150 Or More

\*While Supplies Last

### March Giveaway

Sign Up Online

For A Chance To Win

The Alicia Turquoise

Statement Necklace & Earring Set

Drawing held Friday March 25 at 10 am

for details please visit our factory outlet page at  
[www.desertrosedirect.com/factoryoutlet.html](http://www.desertrosedirect.com/factoryoutlet.html)



## Join the *SoftFlex* Community!

Live Design Challenges

Tutorials

BOGO Offers

Giveaways

Special Discount Offers

Live Sales



Join the "Soft Flex Very Important Beading Studio" Group on Facebook for jewelry making inspiration!

Subscribe to our YouTube Channel for video tutorials!

[www.SoftFlexCompany.com](http://www.SoftFlexCompany.com)

Toll Free Phone (866) 925-3539 • U.S. Phone (707) 938-3539 • Free Shipping on orders over \$65 in the USA

Use coupon code **BeadSociety10** to get 10% off! • DOES NOT APPLY WITH OTHER DISCOUNTS • LIMIT 4 USES PER CUSTOMER

SoftFlex loves to support bead societies, as they are the backbone to our beading community. We have a coupon code for BSNM members. Just enter the code **BeadSociety10** at checkout. Coupon gives 10% off of each item, but it does not apply on top of other discounts and there is a limit of 4 uses per customer. No expiration date.



# We're back with all your favorite Exhibitors!!!



## BEAD SHOW

March 25-27, 2022  
Fri & Sat 10am-6pm,  
Sun 11am-4pm

Santa Fe Community  
Convention Center  
201 W Marcy Street



Sign up for a class and learn a new skill!



Anne Mitchell



Laura Stamper



Kristal Wick

Check out all the details at [www.WholeBead.com](http://www.WholeBead.com)



Jerome Nuñez  
Owner

**A FEW OF MY FAVORITE BEADS**  
Seed Beads • Delicas  
Swarovski Crystals & Pearls  
Fire Polish, Daggers & More

10137 Edith Blvd. NE  
Albuquerque, NM 87113

(505) 974-1645

No additional discount for BSNM members

Beads • Findings • Classes

*The Beaded Iris*

(505) 299-1856  
1512-F Wyoming Blvd. NE (N of I-40 at Constitution)  
Albuquerque, NM 87112  
www.thebeadediris.com

10% discount for BSNM members

**Baskets of Africa.com**  
info@basketsofafrica.com

1-505-323-2315 – Local  
1-800-504-4656 – Toll Free

Visit Our Showroom:  
Open 10-3 Mon-Fri

1714 Eubank Blvd NE  
Albuquerque, NM

FAIR TRADE  
FEDERATION  
MEMBER

15% discount for BSNM members

STONE MOUNTAIN  
BEAD GALLERY

Beads, Jewelry &  
Handicrafts of the World

Voted Albuquerque's Best Bead Shop!

Robert Steinberg - owner

4008 Central Ave SE  
Albuquerque, NM 87108 505-260-1121

Mon-Sat 11-6 Sun 12:30-4:30  
www.stonemountainbeads.com

20% discount for BSNM members

**Beads and Beyond by Betty**  
Designer  
Betty Smith  
bettygardens@gmail.com  
520-405-8142  
www.BeadsandBeyondbyBetty.com

*Cynthia A. Romero*

Tax Preparation & Planning  
Bookkeeping & Payroll Services

(505) 296-0521  
(505) 263-3646  
RomeroIII@msn.com

Member NATP

### Get Your BSNM Discount

To get your BSNM discount at our business members' stores, you must show your current membership card. They won't accept expired cards or membership renewal emails or a letter from your mom!

Don't lose out. Be sure you have your 2022 BSNM membership card and show it when you make a purchase.

Tim & Larry's  
**ELIXIR**  
BOUTIQUE  
CHOCOLATES

### Elixir Chocolates

6616 Gulton Ct. NE,  
Suite 60  
Albuquerque, NM 87109  
(off Osuna Road, west of  
Jefferson)

Open Monday – Friday  
10:00 am – 3:00 pm  
Call ahead on weekends.  
505-933-5125

## Procedure for Submitting Articles for Publication

Producing a quality monthly publication as well as maintaining an up-to-date website and Facebook page is not an easy task. We have three people who work hard to ensure that our members have the most timely and accurate information possible. But these tasks take lots of time and can't be done properly without the assistance of our members. Please remember to follow these procedures when submitting information to be shared with the general membership:

- Send all information to [beadsocietynm@gmail.com](mailto:beadsocietynm@gmail.com)
- Please send just one topic per email and be sure to include the topic in the subject line and indicate that the topic is for publication.
- Do not send articles or information as a response to another email; send a new, separate email.
- Be sure that any artwork, etc., you send is copy-ready in a format that can easily be downloaded and copied – preferably as an attachment (JPG, TIF, or PNG, or incorporated into a Word document).
- Please send complete information. The members of the Communications Committee are not mind readers. ☺ Please provide full names of persons, full addresses and contact information, dates and times, etc.
- Information to be included in the monthly publication, either the Newsletter or Bead Blast, MUST be received no later than the 20th of the prior month. Information received after that date will be shared via social media and on the BSNM website, and used for the following month's publication if appropriate.

## 2022 Board of Directors

Due to the New Mexico governor's COVID-19 restrictions, The Board of Directors has been meeting on the second Wednesday of the month via Zoom.

*All members are welcome to attend.*

President .....	Barbara Rosen
First Vice President - Special Events and Workshops.....	
Second Vice President – Programs.....	Pat Verrelle
Treasurer .....	Elizabeth (Liz) Reisinger
Secretary .....	Helen Yackel
Membership Chair .....	Deb Cole
Newsletter Editor .....	Jill Bartel
Volunteer Coordinator.....	Fran Hahn (State Fair)
Member-at-Large .....	
Past President.....	
Webmaster.....	Amanda Archuleta
Social Media Manager .....	
Photographer.....	Julie Fear
Historian .....	
Meeting Coordinator .....	Elizabeth (Liz) Reisinger
Membership Recruiter.....	
Fiber Arts Council Representative.....	Jamie Welles
Fiber Arts Education Committee Representative .....	Elizabeth (Liz) Reisinger

Copyright © 2022 Bead Society of New Mexico. All rights reserved.

Address: Bead Society of New Mexico, P.O. Box 91655, Albuquerque, New Mexico 87199

Website: [www.beadsocietynm.org](http://www.beadsocietynm.org)

Facebook: <https://www.facebook.com/BeadSocietyNM/>

Contact email: [beadsocietynm@gmail.com](mailto:beadsocietynm@gmail.com)

You are receiving this newsletter because you opted in at [beadsocietynm.org](http://beadsocietynm.org).