



BSNM Newsletter

March 2023

The mission of this newsletter is to inform our members of the activities, events, and classes in the local beading community and to provide a forum where members can share beading knowledge and techniques.

In This Issue

Message from the President
Upcoming Events
Welcome New Members
Raffle and Door Prize Winners
Library Exhibit
Membership Cards
Donated Beads for Sale
Colors for Spring/Summer 2023
Support Our Local Businesses
Beading Groups
New Bead Embroidery Book
Polymer Bead Class Recap
Gem of the Month
Beading Trends
Jewelry Trends
Pam and Charlotte's Bead Cruise Recap
Community Beading Project
Workshops at Gypsy Raven
Fiber Arts Council
Keep in Your Thoughts
BSNM Financials Available on Website
2023 BSNM Calendar
Sandia Heights Call for Artists
Business Member Ads
Procedure for Submitting for Publication
2023 Board of Directors

This newsletter welcomes new ideas from members and solicits articles and items of interest. Any special events taking place in your life (birthdays, anniversaries, condolences needed, new job, moving, births, weddings, awards, trips, transitions, etc.)? All manuscripts are subject to editing. The editor does not assume responsibility for the accuracy of information contained in the articles received. Please send all contributions for the newsletter to the editor in care of the Bead Society of New Mexico.

From the President

Hello Members,

We have had some wild weather lately. Warm, spring-like weather, then cold and snow, then intense wind (up to 75 miles per hour in the metro area!). Spring is only 3 weeks away (March 20). **And don't forget that Daylight Saving Time begins on Sunday, March 12 (turn your clocks ahead 1 hour).**

Welcome to our new members Nikia Angel, Sandra-Lin Chavez, and Mary Sharp-Davis. We hope you will enjoy our upcoming meetings and classes.

The swap meeting at the February meeting was terrific. Thank you to business members Alice Helstrom (Alice Helstrom Studios), Anna Holland (Dorje Designs), and Robert Steinberg (Stone Mountain Bead Gallery) for bringing such fabulous stuff for us to buy. Several people turned in their gift certificates in exchange for beads from the large bead donation, in addition to buying beads. We will continue to have beads from bead estates donated to BSNM for sale at the general meetings.

Be sure to check out the **upcoming classes** (in Upcoming Events in this newsletter and on the BSNM website): **Pam Troutman's Basic Bead Embroidery class in April** and **Julie Fear's Stacked Right Angle Wrap Bracelet class in June.**

The Board has been listening to you. We heard that you wanted more classes in the general meetings. So, **at the April general meeting member Helen Yackel will be teaching a simple macramé necklace.** More information in next month's newsletter. Watch for other classes at meetings during 2023.

BSNM will have a display at the Cherry Hills Library during May 2023. We are working on a theme and what kind of items we will display. **We need someone to work with the Board to coordinate and organize items for display.** We are also looking for someone to teach a class at the library on Saturday, May 20. Something simple that all skill levels could achieve.

BSNM will have a booth at the **Placitas Flea Market on Saturday, June 24.** Be thinking about what you can donate to raise money for the Bead Society. We will also need volunteers to work the booth. More info to come.

In preparation for writing this message, I was looking at holidays in March. Of course there is the First Day of Spring and **St. Patrick's Day (March 17).** But there is also **National Peanut Butter Lover's Day (March 1), What If Dogs and Cats Had Opposable Thumbs Day (March 3),** and **National Poultry Day (March 19 – hug your chicken!).** And, of course, March is National Craft Month.

Have a great month and see you soon!

Barbara Rosen, BSNM President, 301-351-3303,

beadsocietynm@gmail.com, www.beadsocietynm.org,
www.facebook.com/BeadSocietyNM/



Upcoming Events

March 14

Board Meeting

Tuesday, February 14, 2023 11:30 am to 1:30 pm

The Board will meet to conduct the business of the bead society. Board members please plan to attend.

March 17-19

Treasures of the Earth

Friday-Sunday, March 17-19, 2023

Friday & Saturday 10:00 am to 6:00 pm; Sunday 10:00 am to 5:00 pm
Creative Arts Building, Expo New Mexico (State Fairgrounds), Albuquerque, NM
enter through Gate 3 at San Pedro and Copper

Admission: \$2 on Friday; \$5 on Saturday and Sunday; free for kids under 13

Door prizes, raffle, silent auction, kids' table, displays, and more!
 Over 50 dealers selling everything from amethyst cathedrals to zebra rock, rocks and minerals inexpensive to moderately priced. You will find gems (crystals, faceted, cabs, rough, and set in jewelry), decorator items, and jewelry, books and supplies, beads, and lots more. We'll have a mineral ID booth, an educational booth from the NM Bureau of Geology and Mineral Resources (display and maps, books, and guidebooks), stuff for kids, and three silent auctions per day.

www.agmc.info



March 21

General Meeting

Tuesday, March 21, 2023 6:00 pm to 8:00 pm
(set-up, social time, and buying raffle tickets beginning at 5:30 pm)
Heights Cumberland Presbyterian Church, 8600 Academy Rd. NE

Get acquainted with Anna Holland of Dorje Designs. Anna will introduce herself and discuss her design and beading process, as well as her collection of ethnic beads. Her specialty is multi-strand necklaces using ethnic beads and pieces. She will also have a selection of beads and finished jewelry for display.

Anna will be teaching a multi-strand finishing class later in the year.

Masks are optional. We must wipe down the tables and must be out of the room by 8:30 pm.

March 24-26

Whole Bead Show

Friday-Sunday, March 24-26, 2023
Friday-Saturday 10:00 am – 6:00 pm, Sunday 11:00 am – 4:00 pm
Santa Fe Community Convention Center, 201 W Marcy Street, Santa Fe, NM

Admission is free (no tickets needed)

This show is open to the general public. No pre-registration is required or offered.

Wholesale: Bring a copy of your state-issued resale license to purchase as a wholesale buyer.

Parking: Santa Fe Community Convention Center Municipal Garage, 119 South Federal Place
 Hours: daily, 7:00 am to 12 midnight

Rates: \$1 for the first hour, \$2 for the second hour and each hour after. \$12 maximum

For a list of vendors, go to <https://wholebead.com/showssf23/>



Upcoming Events

April 8

Basic Bead Embroidery Class

Saturday, April 8, 2023

1:00 pm to 4:00 pm

Heights Cumberland Presbyterian Church, 8600 Academy Rd. NE

This is a technique class. Pam Troutman will teach you how to bead around a cab with backstitch, how to raise the bezel with peyote stitch, finish the back with Ultrasuede, choose your edge stitch, then add a beaded bail. You will finish your simple pendant project in class.

Class fee: \$30

Kit fee: \$20

Pam will have kits to choose from in class for \$20 each, but if you'd like to make your own, the supplies needed are:

- Deep domed round or oval cabochon 0.25 to 0.5 inches high and 1 to 2 inches wide glued to Stiff Stuff or stiffened felt with a half-inch edge of backing on all sides of the cab.
- Size 11, 6, and 8 seed beads (tubular shape or Delicas preferred but not required) – please bring anything except Chinese-made beads, as these are not consistent in shape or size.
- Ultrasuede backing

Students need to bring:

- Beading needles
- Choice of beading thread
- Scissors sharp enough to cut thread/Fireline and stiff material
- Beading mat
- Light, magnifier, or anything else you use for close beadwork

Once you learn the technique, you can use smaller beads in future projects (size 11 and 15) and bead embroider shaped cabochons with lower domes. Instructor will talk about adding picot edging, which can be done in class if students are quick, or at home depending on which finished edging style the student chooses.

Sign up on the BSNM website: www.beadsocietynm.org



June 10

Stacked Right-Angle Wrap Bracelet Class

Saturday, June 10, 2023

1:00 pm to 4:00 pm

Heights Cumberland Presbyterian Church, 8600 Academy Rd. NE

Julie Fear will teach you how to make a double or triple wrapped bracelet using a variation of right-angle weave. Some experience in bead weaving is helpful. **Class is limited to 12 students.**

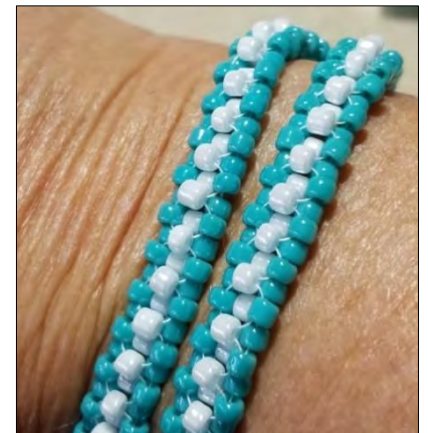
Cost: to be announced

Students need to bring:

- A total of approx. 20-21 grams of size 8 beads in 2 or 3 colors
- A small amount of size 11 beads (about 16 beads) to attach your clasp
- 1 clasp (I prefer a strong magnetic clasp)
- 6-lb. Fireline in smoke or crystal depending on your bead colors (or your preferred material)
- Beading needle size 11 or 12
- Bead mat
- Additional light source, if needed
- Magnifiers, if needed

Julie will have some kits available that will include enough beads for a triple wrap and clasp only. Students will have your choice of 2 or 3 colors of size 8 beads. The bracelet will have a small, very strong magnetic clasp. Students should be able to finish the bracelet in the class or be well along so finishing it at home will be easy.

Sign up on the BSNM website: www.beadsocietynm.org



Welcome Members

Welcome to new members Nikia Angel, Sandra-Lin Chavez, and Mary Sharp-Davis.

Winner, Winner

Congratulations to **Amy Bracher**, who won the A Passion for Beads raffle basket at the February meeting.

Congratulations to **Caroline Bleil**, who won the door prize (a selection of beads) at the February meeting.

Correction

Apologies to Betsey for misspelling her name in the February newsletter. It should be Betsey Ventrella.

Library Exhibit

BSNM will have an exhibit at the Cherry Hills Library for the month of May in 2023. We need someone to work with the Board to coordinate and organize the items for this display.

We will also be presenting a class on beads with a make-and-take bracelet (stretchy or memory wire). BSNM will provide kits for the class. We need someone to volunteer to present this class. Please let us know at beadsocietynm@gmail.com

What kind of exhibit do you think the Bead Society should present? All jewelry? Jewelry and non-jewelry? Should we have a bead challenge to solicit items for the display? Please send the Board your thoughts and ideas at beadsocietynm@gmail.com

(This is strictly an exhibit – no selling – similar to the displays we've had in years past in the library at the South Broadway Cultural Center.)

Date on Your Membership Card

If you have already received your 2023 membership card, please make sure the expiration date is December 31, 2023. You can correct your card if necessary.

Donated Beads for Sale

BSNM has recently received several donations of beads – both relatively small amounts and entire estates. The Board members and other volunteers have been going through these donations, taking inventory, and pricing the beads. **We will have a portion of these beads for sale (at very good prices!) to our members at the general meetings beginning at the February 2023 meeting.**

Several members have made suggestions about how to spend the money from the sale of these beads. These suggestions include a resin class with Susan Lenart Kazmer, a 2- to 3-day retreat with instructors, and a trip to Madrid or Gallup. If you have an idea of how you would like to see these monies spent, please contact the Board at beadsocietynm@gmail.com

Jewelry Definitions

from *An Illustrated Dictionary of Jewelry*
by Harold Newman

egg pendant. A pendant in the form of a miniature egg made of gold and decorated with enameling and gemstones worn suspended from a necklace (known as a "necklace egg") or a bracelet. Examples were produced by Carl Faberge suggestive of his famous jeweled Easter eggs made for the Russian czars. Some of these pendants were executed by his workmaster, A. Thielemann.

lava jewelry. Articles of jewelry, usually a mounted cameo or intaglio, made of the lava from Mt. Vesuvius and carved in Italy. The pieces are of a variety of colors, usually pale shades of greys and browns, and the surface is matte. It was a popular form of inexpensive jewelry of the 19th century.



Colors for Spring/Summer 2023

<https://www.pantone.com/articles/fashion-color-trend-report/new-york-fashion-week-spring-summer-2023>

According to Pantone Color Institute experts, the colors for Spring/Summer 2023 New York reflect how our experience of the past few years has influenced our relationship with color. Embracing a fearless approach that ranges from chaos to quiet, we strive forward with a color palette that celebrates a newfound freedom and the excitement of trying something new. Colors and color combinations that lend themselves to experimentation and quirky contrasts highlight our desire for individualism encouraging us to express ourselves in unexpected ways.

"Colors for Spring/Summer 2023 are recalibrated for the new era we are entering. Blending escapism with reality, wholesomeness, and joy, we embrace the exploration of extreme contrast in mood and color" said Leatrice Eiseman, Executive Director of the Pantone Color Institute. **"There is utility and basicness to this season's color story, while at the same time, there is an uplifting vital sense of play that comes through."**

These are a range of contrasting colors encouraging experimentation and individualistic expression.



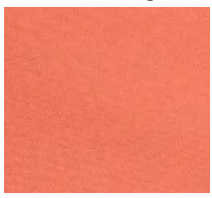
Pantone 18-1664: Fiery Red – a super charged red tone signaling an energetic intensity



Pantone 18-2143: Beetroot Purple – an emboldened fuchsia hue depicting the fruits of nature



Pantone 15-1335: Tangelo – a tangy, tasty vitamin-enriched orange (think carnelian, Mexican fire agate, orange chalcedony, red Botswana agate)



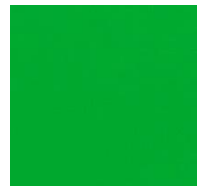
Pantone 15-1530: Peach Pink – a nurturing peach tone invites you in for a warm embrace (think strawberry quartz)



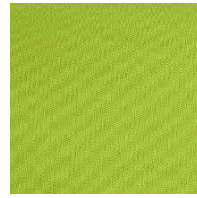
Pantone 14-0756: Empire Yellow – a luminescent yellow that radiates joyfulness (think citrine, yellow jade)



Pantone 12-1708: Crystal Rose – a clear pink conveying modern romance (think rose quartz, Peruvian opal, pink thulite)



Pantone 16-6340: Classic Green – a nourishing green imbued with health giving qualities



Pantone 13-0443: Love Bird – an exotic green with a lively character (think peridot, prehnite, some colors of jade, gaspeite)



Pantone 16-4036: Blue Perennial – a stand-out blue that spikes the palette (think sodalite, kyanite)



Pantone 14-4316: Summer Song – a clean blue tone that expresses relaxation and tranquility



Support Our Local Businesses

A Few of My Favorite Beads: Call 505-974-1645 or come by to see our latest beads. We carry seed beads, crystals, and other bead items for your projects.

Baskets of Africa: We have an abundance of baskets to choose from. Come see our great selection of beautiful artisan-made, fair-trade baskets. Call 505-323-2315 for appointment or go to info@basketsofafrica.com.

Beadweaver of Santa Fe: We are still offering a 10% discount to BSNM members.

The Beaded Iris: We offer 10% discount to BSNM members, as well as our punch cards for future savings. Come on into the store and rediscover all the beads, crystals, delicas, findings, thread, and other products you need to complete your beautiful project. **Open beading on Wednesdays.** Store hours are Mon. through Thurs. 10am to 5pm; Fri. through Sat. 10am to 4pm. Sun. closed. Phone: 505-299-1856; email: beadedirisstore@aol.com.

Glorianna's Beads (Santa Fe): 70 West Marcy Street, Suite B. Phone: 505-982-0353. Open Tues-Wed and Fri-Sun 10:30am to 4pm.

Mama's Minerals: Bead Society members get 15% off on regular-priced merchandise. You can buy beads in bulk every day for up to 25% off. We will be moving this spring to 12th Street and Menaul, right across from the Indian Pueblo Cultural Center. www.MamasMinerals.com.

Meltdown Studio: Check out our **new and returning classes** (Chevron Crown Ring, Desert Rose Ring, Botanical Amulet, Earth Day Earrings, Multi-Stone Slide Bracelet, Intro to Small Metals) at <https://www.meltdownstudio.com/group-classes-1>.

New Mexico Bead Company: New Mexico Bead Company is located at 4111 Louisiana NE, Albuquerque (north of Montgomery). 505-243-2600. Website: <https://www.nmbead.com/>. Come and see our new 8mm round stone beads and stone fetish beads.

Santa Fe Jewelers Supply: Open 9:00am to 5:00pm. Curbside pickup, mail order, or visit our showroom today! Order on our website at www.sfjs.net day or night. Phone: 505-988-9157.

Stone Mountain Bead Gallery: We're open Mon. through Sat. from 11am to 6pm; Sun. 12:30pm to 4:30pm. Call 505-385-2200 to arrange contactless pickup. **30% off for BSNM members.** Back issues of *Bead&Button* magazine are 50% off.

Thomason Stone Supply: Store hours are Mon. through Sat. 9am to 5pm (winter hours). **Sale Day is March 11. 10% off everything with very few exceptions.** You can place an order by calling us at 888-353-9934 or 505-268-9934, or by filling out a contact form on our website, <https://www.thomasonstonesupply.com/>.

Thunderbird Supply Company: See our website (<https://www.thunderbirdsupply.com/>) for online and in-store specials. Store hours: Mon.-Fri. 9am-6pm; Sat. 10am-5pm.

Treasures of the Gypsy/Gypsy Raven: Treasures of the Gypsy Show Room is open by appointment, as well as for classes. Please contact Pamela Armas to schedule your appointment at 505-847-0963, or email her at gypsytreasures@cs.com

Beading Groups

Laurye Tanner's house: Beginning November 18th, **every Friday at 1:00 pm.** Bring your beads, thread, needles, beading matt, etc. – whatever you need for the project you are working on. Also bring your own beverage. 3100 Camino de la Sierra NE, Albuquerque, 87111. You **must RSVP** as there is limited space. laurvert@yahoo.com

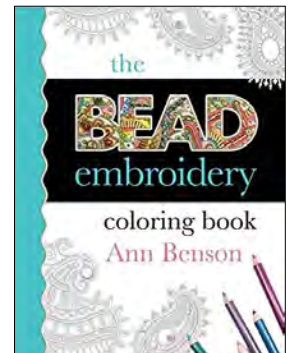
Bosque Farms: Do you live in the Bosque Farms area? Join BSNM member Kathy Jost at the Bosque Farms Community Center for the **BFCC Bead Group on the 2nd and 4th Thursday of the month from 2:00 pm to 5:00 pm.** Bosque Farms Community Center is located at 950 N Bosque Loop in Bosque Farms, New Mexico. Phone: 505-869-5133.

Placitas: This beading group is taking a break for the winter months. We'll let you know when they start meeting again.

New Bead Embroidery Book

The Bead Embroidery Coloring Book
by Ann Benson

Ann Benson shares the professional methods and practices that will bring your bead embroidery to a whole new level. Using her unique design and technological skills, Ann brings you over one hundred designs, motifs, and templates that you can develop according to your own color taste and end use. Combine, crop, repeat, recolor and resize, it's all up to you!



Explore the many materials and surfaces on which you can do bead embroidery. Learn how to apply your design onto your chosen surface using different techniques, from simple sketching to high-end technology. Professional finishing techniques and edgings will make your pieces shine. Discover ways to incorporate non-traditional materials into your designs, including fibers, paper craft elements, and hidden treasures from your local hardware store. There's no limit to what you can use and no limit to what you can achieve. Ann will be your guide.

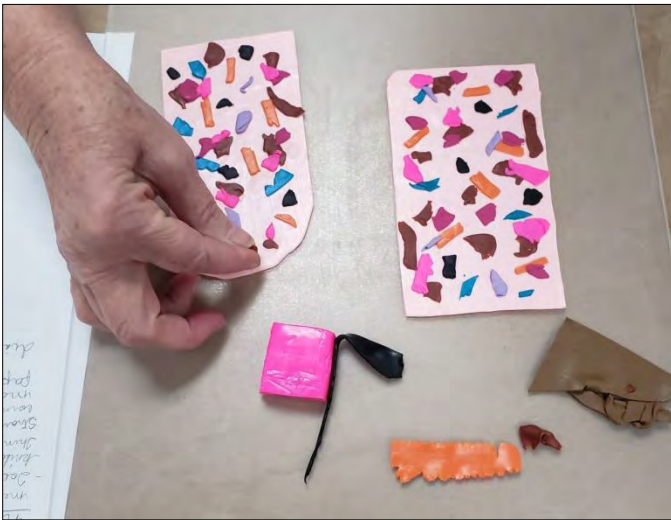
This 8.5-inch by 0.42-inch by 11-inch paperback book was published by Ann Benson Publishing in January 2023. It has 156 pages. The list price is \$29.95 on Amazon.

Polymer Bead Class Recap

Pam Troutman had five students for her polymer clay confetti beads class in February: Mary Neel, Claudette Jaramillo, Kay Bennett, Linda Gregory, and Linda's daughter, Amanda Walters. Following are photos of the class and some of their beads in progress.



The students hard at work creating their confetti clay.



Placing the confetti bits on the base clay.



Decorated clay ready to be run through the pasta machine to combine the elements.



Using a metal ruler to straighten the edges of the clay and cut narrow triangular strips to be rolled into beads.



Strips of clay are rolled around a toothpick to create a bead (similar to making paper beads).



The shape of the final bead (round or oval) depends on the width of the base of the triangular strip of clay.

Gem of the Month – Aventurine

Aventurine is a translucent form of microcrystalline quartz (the mineral class of chalcedony) containing particles of mica (usually chromium-rich fuchsite, a variety of muscovite mica), which gives this stone its sparkly appearance. This effect is known as "aventurescence."

The most common color of aventurine is green, but it can also be orange, yellow, red, pink, brown, white, gray, or blue. Flakes of lepidolite mica can impart a pink, red or purple color. Hematite and goethite can produce pink, orange, red, and brown aventurine. Muscovite and ilmenite can produce gray, yellowish, or silvery aventurine. Aventurine feldspar, or sunstone, can be confused with orange and red aventurine quartzite, although the former is generally of a higher transparency.



Aventurine is used for a number of applications, including landscape stone, building stone, aquaria, monuments, and jewelry.



A brightly polished cabochon cut from a piece of light green aventurine.

Because aventurine is a rock (rather than a mineral), its physical properties vary: its specific gravity may lie between 2.64-2.69 and its hardness is somewhat lower than single-crystal quartz at around 6.5. Darker specimens tend to have more mica particles, and lighter stones are more opaque. When polished, aventurine has a smooth and silky feel.

The name *aventurine* derives from the Italian "avventura" meaning "by chance." This is an allusion to the lucky discovery of aventurine glass, or goldstone, at some point in the 18th century. One story runs that this kind of glass was originally made accidentally at Murano by a workman who let some copper filings fall into the molten glass. From the Murano glass, the name passed to the mineral, which displayed a rather similar appearance. Although it was known first, goldstone is now a common imitation of

aventurine and sunstone. Goldstone is distinguished visually from the latter two minerals by its coarse flecks of copper, dispersed within the glass in an unnaturally uniform manner. It is usually a golden brown, but may also be found in blue, green, purple, and clear.



A blue specimen of aventurescent quartz from India. This specimen is about 10 centimeters across.

Aventurine and translucent quartz without aventurescence are often dyed bright colors. Dye is used to produce low-cost cabochons with bright colors that are often seen in inexpensive jewelry. The name "aventurine" can be inappropriate, but it is used for its greater appeal in the marketplace when compared to "translucent quartz" or other more appropriate names.



Aventurine with very faint aventurescence and common quartz are often dyed to produce brightly colored cabochons and other items. The dyed cabochons in the photo above were sold as "aventurine" by several different vendors.

Shoppers should be aware that not all stones sold as "aventurine" are worthy of the name. Be cautious, especially when you see outrageous colors.

In crystal healing, green aventurine is used to clear away negative emotional patterns and support the heart chakra. It also calms powerful feelings in the lower abdomen, such as anger, centered in the solar plexus chakra. Aventurine encourages the expression of gratitude, hope, and positive approaches to life. This stone can also help with anxiety, fatigue, easing guilt, and trauma recovery.

Aventurine is a birthstone for the zodiac sign of Libra (September 23 – October 22).

India is by far the most important commercial producer of aventurine. Brazil is the second-place producer. Russia, Spain, Austria, and Tanzania produce smaller amounts of aventurine.

Beading Trends Seen at the Tucson 2023 Show

by Katie Hacker, February 24, 2023

https://www.interweave.com/article/jewelry/beading-and-jewelry-trends-contributors-2023-tucson-shows/?oly_enc_id=7354A2943523A3R

We asked some of our fellow travelers—and contributors to Interweave.com—for their top beading and jewelry trend picks and tips for using them. Work these beauties into your beading and jewelry projects this year.

Julie Sanford was excited to see that hard-to-find and highly sought-after **ocean jasper** was back in play this year. She admits, "It's great news for collectors but quantities were selling out fast! Plus, **Ethiopian opal** did not disappoint this year! There were literally piles of dazzling prismatic rough and finished gems on tables all over town. It's easy to get caught up digging through the raw gems, lit up by Tucson sunshine!"

Cynthia Thornton, owner of Green Girl Studios, offers that shoppers were interested in the subtler colors of semiprecious stones, such as **moonstone, sunstone, moss aquamarine, and kyanite**. **Micro faceted stones in small sizes** also seemed to be flying out, according to several stone dealers. She says the mala trend is still going strong, with 8mm round semiprecious beads selling out.

Nealay Patel says, "It was love at first sight with the watery colors of this **ametrine** and I just had to have it. I love the authenticity of gemstones, especially because they really help to elevate my designs to the next level as a serious maker. I know how working with bold colors outside of our regular palette can be intimidating, so my advice is to start with 'watered down' colors and translucent materials to help ease your transition to working with a stronger color palette."

It's always fun to look for something a little bit different in Tucson. **Water buffalo horn** is a good example of the trend toward using sustainable materials in jewelry. Water buffalo are farm-raised, and every part of the animal is used for farming, nourishment, and other necessities—nothing goes to waste. Nealay says matte water buffalo horn beads are rich and authentic in feeling and appearance.

Seed bead makers are in their element this year with **long, colorful fringe earrings**. Danielle Wickes spotted many shoppers wearing them and received compliments, as well as inquiries into making them. Danielle recommends getting started with Terra Intensive Colors at johnbead.com.

Danielle also spotted a lot of **macramé with gemstones** on display and being worn by shoppers at the shows. She wore a macramé pendant made by Ukrainian artist @martajewelry and many folks stopped her to ask about it. Danielle also says, "I don't have a photo of this trend, but I did notice a lot of interest in classes from folks who stopped at the John Bead Corp. booth. Visitors were asking where they can go to learn, both in person and online."

Wire-wrapped jewelry is a beautiful way to show off your newest trendy stones. Wrap Maker pliers from The BeadSmith debuted in Tucson and were invented by Jim McIntosh to make it easier to make wire-wrapped and banded work. Leslie Rogalski, Creative Director for The

BeadSmith and former Interweave editor, says, "With metal remaining popular in enriching our work, the right tool for the right job should be a mantra, not a trend!"

Jewelry Trends for Spring 2023

by Gabby Axner, February 15, 2023

https://www.interweave.com/article/jewelry/spring-2023-jewelry-trends/?oly_enc_id=7354A2943523A3R

Trends are always on the move, so it's no wonder that while last season's jewelry trends are certainly not out of style, there are several new trends that have popped up recently. After doing some investigating of my own, I have compiled some Spring 2023 jewelry trends that are worth trying out and won't disappear anytime soon.

Cocktail Rings

Do you remember those large heart rings that you could get for kids? Now, you can welcome the adult version of those rings into your life. Cocktail rings are becoming increasingly popular, and this is something I am looking forward to. Large stones can be beveled in gold to help emphasize the color of the stone. This trend may be a bit out there for some, but it is worth trying! Statement rings can be adapted to your own tastes—all you really need is to showcase an eye-catching stone and you're good to go!

Lost and Found

A trend that I am particularly excited to see is the incorporation of found objects into jewelry. These found objects can range from vintage and antique charms to ethically sourced animal bones or insect wings. The possibilities for this trend seem endless, from antique charms given a new life in a modern design to jewelry using insect wings or even animal teeth. The found objects jewelry trend also leans into the statement trend in jewelry.

Clay Jewelry

Clay jewelry continues to be popular, and for good reason. This jewelry is often lightweight, making it perfect for statement pieces and for overall wear. I have seen clay jewelry in many forms, but lightweight polymer clay earrings are an especially popular option, as it allows for those who may have sensitive ears to wear statement earrings. Polymer clay comes in many colors and finishes and can be made into fun patterned hoops, dangles, or studs. The versatility of clay allows it to adapt to other trends and stay relevant. The material is also fairly affordable, making it a great trend for anyone to try.

Cuff Bracelets

Rethink cuff bracelets, because they are coming back into style once again. **It's been some time since I've seen chunky cuffs in stores, but I'm happy they're back!** Cuff bracelets add a lot to an outfit and are pretty easy when it comes to styling. To fully embrace this trend, you may want to go for a brass or gold finish and layer a few other bracelets.

Pam and Charlotte Go to Sea to Learn Jewelry Techniques

by Pam Troutman

On February 10th, over 60 people set forth from the Port of Los Angeles on Royal Caribbean's Navigator of the Seas headed for the Mexican Riviera. As we cruise, students take classes from national instructors. (See the 2023 Itinerary below for more details.)

Pam Troutman and Charlotte Souter were two of these hearty souls. This was Pam's 5th cruise and Charlotte's 2nd with the Bead Cruise Group. Caroline Bleil has also been on more than a half dozen cruises with this group and her most recent cruise was last year.

Instructors for this cruise were: Lisa Pavelka, Kinga Nichols Bledsoe, Liisa Turunen, Beki Haley, Marcia Balonis, and Cassandra Spicer. Bead weaving, bead embroidery, polymer clay, resin, and Viking knit were the types of classes available.

2023 ITINERARY

Friday, Feb. 10th

7pm • Meet & Greet and Pendant Swap

Saturday, Feb. 11th

9am-4pm • Full Day Classes
7pm-9:30pm • Open Beading

Sunday, Feb. 12th

12:30pm-8pm • Cabo San Lucas
1:30pm-6:30pm • Group Excursion to Todo Santos
9am-4pm • Open Beading
7:30pm to 9:30pm • Bead Bazaar

Monday, Feb. 13th

8am-6pm • Mazatlan
9am-9:30pm • Open Beading
7pm-10pm • ½ Day Class w/Lisa Pavelka

Tuesday, Feb. 14th

8am-6pm • Puerto Vallarta
9am-9:30pm Open Beading

Wednesday, Feb. 15th

9am-4pm • Add-On Full Day Class with Lisa Pavelka
9am-Noon • ½ Day Classes with Beki, Kinga & Liisa
1pm-4pm • Bonus Class A
7pm-9:30pm • Open Beading

Thursday, Feb. 16th

9am-Noon • Bonus Class B
1pm-4pm • Bonus Class C
7pm-8pm • Cocktail Party • Star Lounge
8pm-9:30pm • Design Contest

Friday, Feb. 17th

7am • Arrival to Los Angeles

If you are interested in saving up for such an excursion, here is what it will cost you:

- \$350 for a full day class of your choosing and a half day class of your choice. Each additional half day class is around \$55. Not required if companion is not taking classes.
- \$750 and up for one person to share a cabin with someone else (depends on **what kind of view you'd like**). Pam likes a cabin with portals on the third deck.
- \$250 taxes and gratuities
- \$125 Travel Guard insurance
- Airfare to port city and home (about \$350), hotel stay the night before (\$200, but only half that if you share a room), meals while at hotel, transportation to and from ship (\$100), and bead money (**anyone's guess!**)
- **You'll get all of the food, fun, and entertainment** of a luxury cruise along with a fabulous bead retreat. Classes, workshops, open beading sessions, a cocktail party, gift bags, door prizes, a bead bazaar, and more.

Basically, it all adds up, and \$2000 is the least you will need. That is for 7 nights on the ship with all-you-can-eat-and-see pleasures. There is so much to do on the ship that you don't ever have to go into the ports, but then you'd miss the excursions and shopping. Pam managed to spend only \$100 on souvenirs and only \$150 on beads, kits, and tools. Such willpower!

To learn more about this cruise and to get in on the next cruise (March 15 – 23rd, 2024), visit the Bead Cruise Facebook group at <https://www.facebook.com/groups/386658911353362> or their website, <http://www.beadcruise.com/>. Visit their website to also see photos of class projects.



Two of the classes that Pam took were the Viking knit with crystals bracelet class (Swarovski crystals are strung on the wire before creating the Viking knit) and the fauz dichroic glass jewelry class (resin and metallic veneer are layered onto polymer clay to create a dichroic effect).

**Today is the day
I spread my creative wings.**

Community Beading Project

Join the Museum of Beadwork's annual Collaborative Community Project!

How it works: Each year we ask artists to contribute a beaded item of a specific theme. We install these collected items in an exhibition highlighting the power of people coming together for the purpose of community and creation. The exhibition is then on display for roughly a year. Once finished the individual items are used in fundraising efforts for the Museum support the staff, development, and programs of this community-based institution.



The theme for this year is **"Grandifolia"** and we would like you to make and send us a beaded leaf that will be part on an installation exhibit in our gallery. We will be creating branches that all the leaves will be wired/attached to and then use those to form a canopy or tree. Help us create a canopy of leaves for all visitors to gather under!

We invite you, no matter your experience, style, or technique, to make a leaf and send it to us.

Guidelines:

- Leaves can be anywhere between 2 inches in any direction to 12 inches in any direction.
- As the leaves will be wired to branches in all directions, 3-dimensional is best, but we are not discouraging 2-dimensional as long as they do not fold under their own weight.
- Use of an armature, framework, or solid structure to bead upon is acceptable.
- **Each leaf needs to have a sturdy "stem"** (for example, wire) protruding beyond the beadwork. This is how we will attach them to the branches we are creating for the installation.
- Found materials are acceptable but we ask that the leaves are at least 70% beads.
- No color requirements.
- Single leaves, clusters, or even vines are great. Leaves based on trees, shrubs, annuals/perennials, or the imagination are perfect.

- Original designs only. Due to copyrights that some patterns have, we must require that designs are created by you or that you have express permission to use them for this project.
- Feel free to send us as many leaves as you like. In fact, the more the better!

Please mail your leaves to us no later than May 30, 2023. When mailing, please include:

- Your leaves.
- Your name, town/state/country, and age (if you wish to share)
- Whether or not you would like to be listed as a contributing artist.

Mail to:

Museum of Beadwork
915 Forest Avenue
Portland, Maine 04103

The final installation will largely depend on how many individual leaves we receive.

Fine Print – Please Read!

Upon receiving, the leaves become the property of the Museum of Beadwork. They are intended to be on display at the Museum of Beadwork as an installation for roughly a year before becoming part of an annual fundraising effort for the Museum. Individual leaves will not be returned.

All submissions to this project become the full property of the Museum of Beadwork and can be used by that institution in any lawful way including (but not limited to) publicity, marketing, exhibitions, sale, etc., in perpetuity. All proceeds resulting from this project will go to support the Museum of Beadwork and its mission.

The more you create,
the more creative you are.

– Kate Drew-Wilkerson

"I won't buy any more beads until I use up all the beads I have at home", I said.

Then I laughed and laughed...

someecards
user card



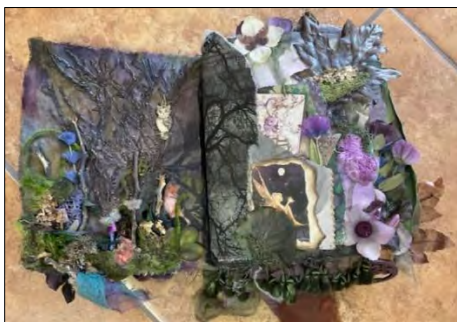
New Workshops at Gypsy Raven Studio/Gallery

All workshops will be held at Gypsy Raven Studio/Gallery located at 111 W. Broadway, Mountainair, NM 87036. For multiple day workshops, Pamela Armas will make arrangements with local hotels with special rate discounts for those that need overnight lodging. Lunch and dinner can either be brought by the attendee or B Street Deli has a good menu for take-out.

To sign up for any of the workshops, contact Pamela Armas by email at gypsytreasures@cs.com and she will email you a form to fill out to register for class. Mail form and check made out to Pamela Armas to: Pamela Armas, P.O. Box 748, Mountainair, NM 87036. Phone: 505-847-0963. **Maximum of 10 students per workshop. No cancellation refunds within 72 hours of workshop.**

"Into the Forest" with Teresa Stoa

Thurs., March 23 – Sun., March 26, 2023
10:00 am – 5:00 pm each day



In the enchanted forest lives a dark and mysterious fairy named "Astoria." She gathers the vegetation of the forest to create potions and herbs which she shares with the animal life and other forest creatures. Teresa will guide you to paint and texture the pages for this book to depict the layers of the forest that protect its magical inhabitants. Teresa will show you how to add images and embellishments to your pages, many of which she will supply. For those of you who know Teresa she will provide in your kit an abundance of materials and treasures for your book.

Four-day workshop cost: \$400 plus a \$30 kit fee (kit fee can be paid at workshop). Workshop fee of \$400 is due by February 10, 2023. Receipt of your workshop fee will hold your workshop place. Material list will be sent to you once you register.

"Bohemian Travels Book"

Thurs., April 13 – Sun., April 16, 2023
10:00 am – 5:00 pm each day

In this four-day workshop you will create a 9x7-inch leather-covered, beaded-edge book cover with five removable pages. These pages have hand painted backgrounds and are covered with beautiful images and embellishments. Just imagine that Bohemian life! Gypsy Pamela will guide you in laying out collaged pages with images, treasures, and more.



Four-day workshop cost: \$450 plus a \$30 kit fee (kit fee can be paid at workshop). Deposit of \$250 is due March 1, 2023 to hold your place. Balance of \$200 is due April 1, 2023. Material list will be sent to you once you register.

"Slow Stitch Book"

Saturday, May 6, 2023 10:00 am – 5:00 pm

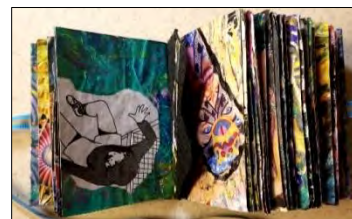


In this one-day workshop you can create one or two of these small books. The covers of these books are made from coffee-dyed fabric and embellished with a lot of unique stitches and treasures. Each book has three signatures bound to the cover with the coptic stitch. Bring your playful SPIRIT for a day of fun!

One-day workshop cost: \$100 plus a \$30 kit fee (kit fee can be paid at workshop, Gypsy Pamela will have kits for each student to make 2 books). Workshop fee of \$100 is due by April 6, 2023 to hold your place. Material list will be sent to you once you register.

"Buttonhole Book" with Jacques Dorier

Saturday, May 20, 2023 10:00 am – 5:00 pm



Jacques will share with you all of the techniques to create a 3x4-inch book with a buttonhole spine that shows the different sections of the book. Students will need to prepare in ADVANCE the book pages. Jacques will send each student a text with a video on how to prepare these pages once the student is registered for the class.

One-day workshop cost: \$110. Workshop fee of \$110 is due April 20, 2023 to hold your place. Material list will be sent to you once you register.

Rio Rancho Bead Estate

Jerome Nunez, of A Few of My Favorite Beads, knows of a bead estate in Rio Rancho with beads for sale at a discount. There are some stipulations to buying:

- You must call Jerome and make an appointment to go to the bead estate (it is not at his shop)
- The bead estate is only available on Tuesdays
- Limit of 3 people at a time
- Jerome will drive you to the bead estate

To make an appointment or if you have any questions, call 505-974-1645.

Studio Space Available

Business partners Sally Jewell and Sally Williams have opened a 1,700-square-foot studio in the Hoffmantown Shopping Center at Menaul and Wyoming for all fiber arts crafts. They offer guilds, groups, or individuals a meeting space, a gathering work space, or an opportunity to use the space to teach classes.

The partners are both mothers and work full time, so the space is currently open Fridays and Saturdays, but will open and host any group when requested.

The Sewing Place Abq
8252 Menaul Blvd. NE, Albuquerque, NM 87110
thesewingplaceabq@gmail.com, 505-705-2952
www.thesewingplaceabq.com

Fiber Arts Council

The Albuquerque Fiber Arts Council is looking for candidates who are interested in promoting fiber arts in New Mexico to fill board positions. If interested, please go to <https://abqfiberartscouncil.org/fiber-arts-council/> to fill out an application. (This is different than being BSNM's representative to the Council.)

The Albuquerque Fiber Arts Council was formed in 1997 to provide the opportunity for local fiber guild members to show their work to the public. It has grown from six guilds then to almost twenty. The Board of Directors has seven members who are dedicated to continuing the tradition of hosting the Albuquerque Fiber Arts Fiesta every other year. As a 501(c)3 organization, the proceeds from the Fiesta provide funding for other public shows and scholarships.

The Council is also seeking individuals interested in working on the marketing committee. If you would like to be involved and work with a great team promoting Fiber art, please email michellejackson@quiltfashions.com

Bead Store for Sale

After 30 years in retail and 50 years in jewelry, imports, and wholesale, **Robert Steinberg, owner of Stone Mountain Bead Gallery (voted Albuquerque's Best Bead Store), is selling off his huge accumulation beads, jewelry, and world handicrafts.**

Included are thousands of strands of vintage Czech beads; African trade beads; gemstone and mineral beads; Native American turquoise and heishi; and more. Also loads of silver and gemstone jewelry; Bali silver beads; wood, ceramic, glass, brass, and stone beads; Swarovski crystals; costume jewelry; seed beads by the pound; and handicrafts, art, and jewelry from Nepal, India, Tibet, Thailand, Bali, and Turkey. Collectables and statues – oriental, Native American, dragons, skulls, Buddhas, malas, and rosaries.

Quantity discounts!

Also, building for sale: retail space on Route 66/ Central Ave. in popular Nob Hill neighborhood. 5,000 square feet currently divided into two stores. Signage and huge parking lot.

Contact: Robert Steinberg
Stone Mountain Bead Gallery
4008 Central Ave. SE, Albuquerque, NM 87108
Phone: 505-260-1121
Email: rsteinberg50@comcast.net

Fundraiser for Barbara Butcher

Barbara Butcher, who has been battling cancer, had a stroke earlier this year that left her with limited use of her right arm and leg. Consequently, she will probably need 24-hour assistance going forward.

To help combat this expense, Jerome Nunez of A Few of My Favorite Beads has volunteered to sell the leftover stock from Barbara's former store, The Beading Heart of Santa Fe. **Sales are cash only. All monies will go to Barbara for her medical expenses.**

You must make an appointment to purchase these beads. Please call Jerome at (505) 974-1645.

Jerome says he can accommodate appointments 7 days a week, beginning at about 11am, but says that Wednesdays are probably the best days.

All items are upstairs at Jerome's store (up a spiral staircase). If you are unable (or unwilling) to climb the stairs, Jerome said he is willing to bring boxes down to you – if you have an idea of what you are looking for.

Put Fiber Arts Fiesta 2024 on your calendar for April 11-13, 2024!

It will be here before you know it!

Keep in Your Thoughts

Jill Bartel, whose father will be having surgery on March 1 and whose mother is moving into assisted living
Jamie Welles, whose mother passed away

If you would like to send a card or note of encouragement to any of these members, please address the envelope to them **in care of the Bead Society of New Mexico, P.O. Box 91655, Albuquerque, New Mexico 87199**, and we will ensure that they get your messages.

Happy Birthday

Judi Burkhalter

Elizabeth Reisinger

If your birthday isn't listed here, please let us know at beadsocietynm@gmail.com so we can wish you a Happy Birthday!

Get More Information on the BSNM Website

■ **Classes:** For classes taught by our business members and other non-BSNM-sponsored classes, go to <https://beadsocietyofnewmexico.wildapricot.org/Bead-Time> for dates, times, and descriptions.

To review class details and to register online, log in to the BSNM website with your email and password and go to the event page <https://beadsocietyofnewmexico.wildapricot.org/Meetings-Classes-and-Events>.

■ **Craft Shows and Other Events:** To see upcoming shows that our members are involved in, go to the Members Art Shows listing at <https://beadsocietyofnewmexico.wildapricot.org/Art-Shows>. Also, if you have an art show you are participating in, don't forget to send the information and event link to beadsocietynm@gmail.com so we can include your event.



BSNM Financials Available on Website

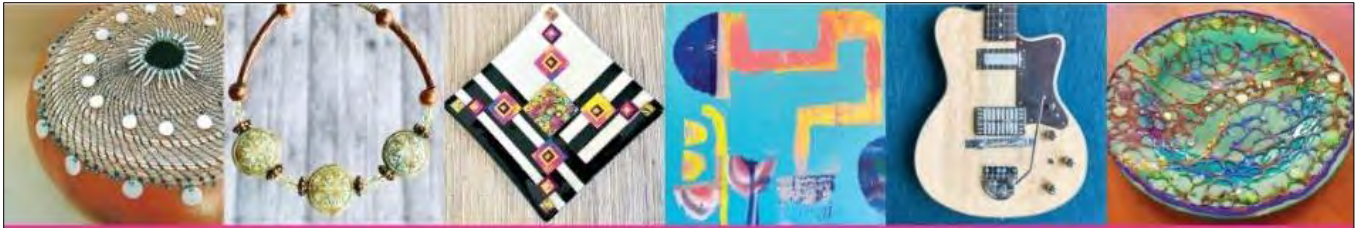
The monthly and annual financial reports for the Bead Society of New Mexico are now available in the "Members Only" section of the BSNM website (you must have/create an account on the website to access these documents). Go to www.beadsocietynm.org and log in to the website (click on "Log In" in the far upper right corner of the homepage; you need to register first if you haven't done so before). Hover over the "Members Only" section on the right end of the categories bar with your mouse and click on "Financials" in the drop-down menu. Then click on the document you want to read. (You may need to temporarily disable your pop-up blocker since the documents may open in a new window or tab).

2023 BSNM Calendar

The following is the calendar for BSNM meetings and events for 2023. **Dates and events are subject to change.**

General meeting, 3rd Tues., 6:00pm	Board meeting, 2nd Tues., 11:30am	Classes	Special events
Jan. 17	Jan. 5		Annual gala
Feb. 21	Feb. 13	Confetti Polymer Beads	Annual bead swap
March 21	March 14		Whole Bead Show
April 18	April 11	Basic Bead Embroidery	
May 16	May 9		Cherry Hills Library exhibit
June 20	June 13	Stacked Right Angle Wrap Bracelet	Placitas Flea Market
July – no meeting	July 11	Crystals in Epoxy Clay Pendant	Field trip?
August 15	August 8	Macramé with Leather & Pearls	
Sept. 19	Sept. 12		State Fair
Oct. 17	Oct. 10		Elections
Nov. 14	Nov. 7		
Dec. – no meeting	Dec. 12		

As of February 28, 2023



SAND | A
HE | GHTS
ART | STS™

CALL FOR ARTISTS

Sandia Heights Artists will present their 20th annual Studio Tour September 9-10, 2023.

This year promises to be our largest tour ever with lots of special events such as our Preview Night. We are now accepting applications for Guest Artists to join the tour and bring a diversity of art to the public.

Please visit our web site for the application:

sandiaheightsartists.com

For Questions, please call:

(505) 856-0195

All entries must be received by APRIL 1st



National instructor Hannah Rosner will be teaching two classes at The Beaded Iris on Monday, March 27, 2023.

You must contact The Beaded Iris to sign up.

Bead Society members will receive 10% off the cost of the class.



**Bead Embroidered Iris
Pendant or Ornament**

**Zoom or in-person class
at The Beaded Iris
Albuquerque, NM**

**Monday March 27 2023
10am-3pm MST**



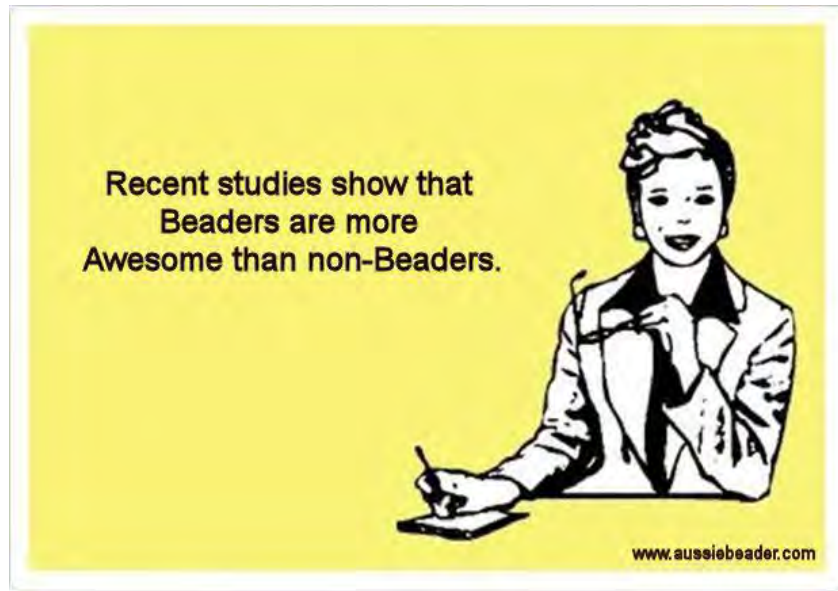
**Crystal Beaded Bead
Capture a rivoli using two hole beads
Intermediate level class**

**In person or zoom class at
The Beaded Iris
Albuquerque, NM**

Monday, March 27, evening



The Crystal Beaded Bead class begins at 6:00 pm.



DESERT ROSE TRADING
Paseo Village Shopping Center
8001 Wyoming Blvd. NE Suite B-5 Albuquerque, NM
Open Mon - Sat 10a - 5p 505-821-6723

**We Are Opening!!!
Feb 27 - March 25
Come See The Sparkle!**

Jewelry Up To 70% Off
Select Home Decor Up To 60% Off
Bead Strands 30% Off

www.desertrosedirect.com/factoryoutlet.html



Join the *Soft Flex* Community!

Live Design Challenges
Tutorials
BOGO Offers
Giveaways
Special Discount Offers
Live Sales








Join the "Soft Flex Very Important Beading Studio" Group on Facebook for jewelry making inspiration!

 Subscribe to our YouTube Channel for video tutorials!

www.SoftFlexCompany.com

Toll Free Phone (866) 925-3539 • U.S. Phone (707) 938-3539 • Free Shipping on orders over \$65 in the USA

Use coupon code **BeadSociety10** to get 10% off! • DOES NOT APPLY WITH OTHER DISCOUNTS • LIMIT 4 USES PER CUSTOMER

SoftFlex loves to support bead societies, as they are the backbone to our beading community. We have a coupon code for BSNM members. Just enter the code **BeadSociety10** at checkout. Coupon gives 10% off of each item, but it does not apply on top of other discounts and there is a limit of 4 uses per customer. No expiration date.




MAMA'S MINERALS
 BEADS, FOSSILS, ROCKS & MORE

Your One Stop For the Holidays!

Drilled & Polished Stones & Fossils, Local
Artisan Jewelry, Rock Tumblers, Stone Lamps,
NatGeo Kits, MamaMade Christmas
Ornaments, Gift Certificates,
& MUCH MORE

505-266-8443
www.MamasMinerals.com
New Website!



We specialize in providing care for clients who need companionship as well as for clients who need end of life care.

Help For Your Loved One:

- Medication reminders
- Cooking favorite meals
- Total personal care including bathing, dressing, and assisting with hygiene
- Changing bed linens and doing laundry
- Light housekeeping
- Assistance with transportation to doctor's appointments, errands, and shopping

9004 Menaul Blvd NE #11,
Albuquerque, NM 87112

505-798-0978

Owner: Elizabeth Sands (BSNM member)

easands@msn.com

dorje designs



Style, soul, and history . . .
all in a single piece of adornment.

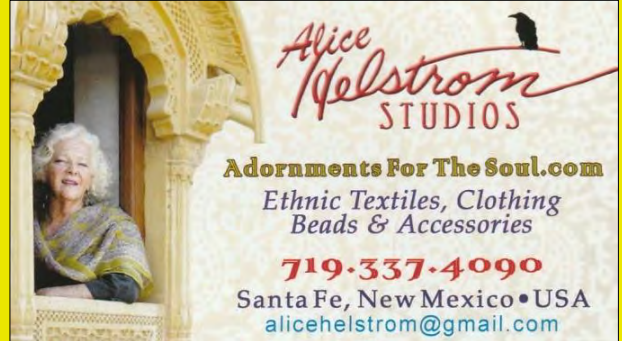
Anna Holland designs unique ethnic jewelry and tribal jewelry using contemporary, antique, and ancient beads and artifacts. Her handcrafted necklaces, bracelets, and rings are all one-of-a-kind treasures, collected and worn by women and men around the world.

<http://www.dorjedesigns.com/>
info@dorjedesigns.com



10% discount for BSNM members

Alice Helstrom Studios



Visit our new store:

The Design Center
418 Cerrillos Road, Santa Fe, NM

10% discount for BSNM members

Treasure of El Dorado

Lewis S. Toth, Owner and Designer

Handmade Southwestern style jewelry, beadwork with semi-precious gems, corals, shells, artistic metal, and glass beads from all over the world, and fetishes imported from Philippines.

Best material and workmanship guaranteed.

Offered to you at affordable prices
for your enchantment

6508 Rancho Ladera Road NE
Albuquerque, New Mexico 87113

Phone/Fax: (505) 821-4276

email: lulutoth7@aol.com

registered New Mexico small business
since 1993

Jerome Nuñez
Owner

A FEW OF MY FAVORITE BEADS
Seed Beads • Delicas
Swarovski Crystals & Pearls
Fire Polish, Daggers & More

10137 Edith Blvd. NE
Albuquerque, NM 87113

(505) 974-1645

No additional discount for BSNM members

Beads • Findings • Classes

The Beaded Iris

(505) 299-1856
1512-F Wyoming Blvd. NE (N of I-40 at Constitution)
Albuquerque, NM 87112
www.thebeadediris.com

10% discount for BSNM members

Baskets of Africa.com
info@basketsofafrica.com

1-505-323-2315 – Local
1-800-504-4656 – Toll Free

Visit Our Showroom:
Open 10-3 Mon-Fri

1714 Eubank Blvd NE
Albuquerque, NM

FAIR TRADE
AGREEMENT
MEMBER

15% discount for BSNM members

STONE MOUNTAIN
BEAD GALLERY

Beads, Jewelry &
Handicrafts of the World

Voted Albuquerque's Best Bead Shop!

Robert Spindling - owner

4008 Central Ave SE
Albuquerque, NM 87108 505-260-1121

Mon-Sat 11-6 Sun 12:30-4:30
www.stonemountainbeadgallery.com

30% discount for BSNM members

Beads and Beyond by Betty
Designer
Betty Smith
bettygardens@gmail.com
520-405-8142
www.BeadsandBeyondbyBetty.com

Cynthia A. Romero

Tax Preparation & Planning
Bookkeeping & Payroll Services

(505) 296-0521
(505) 263-3646
Romero111@msn.com

Member NATP

Get Your BSNM Discount

To get your BSNM discount at our business members' stores, you must show your current membership card. They won't accept expired cards or membership renewal emails or a letter from your mom!

Don't lose out. Be sure you have your 2022 BSNM membership card and show it when you make a purchase.

Procedure for Submitting Articles for Publication

Producing a quality monthly publication as well as maintaining an up-to-date website and Facebook page is not an easy task. We have three people who work hard to ensure that our members have the most timely and accurate information possible. But these tasks take lots of time and can't be done properly without the assistance of our members. Please remember to follow these procedures when submitting information to be shared with the general membership:

- Send all information to beadsocietynm@gmail.com
- Please send just one topic per email and be sure to include the topic in the subject line and indicate that the topic is for publication.
- Do not send articles or information as a response to another email; send a new, separate email.
- Be sure that any artwork, etc., you send is copy-ready in a format that can easily be downloaded and copied – preferably as an attachment (JPG, TIF, or PNG, or incorporated into a Word document).
- Please send complete information. The members of the Communications Committee are not mind readers. ☺ Please provide full names of persons, full addresses and contact information, dates and times, etc.
- Information to be included in the Newsletter MUST be received no later than the 20th of the prior month. Information received after that date will be shared via social media and on the BSNM website, and used for the following month's publication if appropriate.

2023 Board of Directors

The Board of Directors currently meets on the second Tuesday of the month in person.

Members are welcome to attend.

President	Barbara Rosen
First Vice President - Special Events and Workshops.....	
Second Vice President – Programs.....	Pat Verrelle
Treasurer	Deb Cole
Secretary	Helen Yackel
Membership Chair	Deb Cole and Barbara Rosen
Newsletter Editor	Jill Bartel
Volunteer Coordinator.....	
Member-at-Large	Laurye Tanner
Past President.....	
Webmaster.....	Amanda Archuleta
Social Media Manager	
Photographer.....	Pam Troutman
Historian.....	
Meeting Coordinator	Claudette Jaramillo and Mia Seitz
Membership Recruiter.....	
Fiber Arts Council Representative.....	
Fiber Arts Education Committee Representative	Elizabeth (Liz) Reisinger

Copyright © 2023 Bead Society of New Mexico. All rights reserved.

Address: Bead Society of New Mexico, P.O. Box 91655, Albuquerque, New Mexico 87199

Website: www.beadsocietynm.org

Facebook: <https://www.facebook.com/BeadSocietyNM/>

Contact email: beadsocietynm@gmail.com

You are receiving this newsletter because you opted in at beadsocietynm.org.