



# BSNM Newsletter

May 2022

The mission of this newsletter is to inform our members of the activities, events, and classes in the local beading community and to provide a forum where members can share beading knowledge and techniques.

## In This Issue

Message from the President  
Upcoming Events  
May Raffle Basket  
Raffle & Door Prize Winners  
Volunteering with BSNM  
Follow-up to April Meeting  
Beaded Flower Book  
Shaped Beads  
Support Our Local Businesses  
Beading Groups  
Classes at Mama's Minerals  
Recap of Fiber Arts Fiesta 2022  
Gem of the Month  
Placitas Library Call for Entries  
Art Exhibits  
Bead Store for Sale  
Paula Adams Estate  
Keep in Your Thoughts  
BSNM Financials Available on Website  
2022 BSNM Calendar  
Procedure for Submitting for Publication  
2022 Board of Directors

This newsletter welcomes new ideas from members and solicits articles and items of interest. Any special events taking place in your life (birthdays, anniversaries, condolences needed, new job, moving, births, weddings, awards, trips, transitions, etc.)? All manuscripts are subject to editing. The editor does not assume responsibility for the accuracy of information contained in the articles received. Please send all contributions for the newsletter to the editor in care of the Bead Society of New Mexico.

## From the President

Dear Members,

Spring is here, which means high winds and unfortunately wild fires. Please stay safe. Even so, the trees are leafing out, the hummingbirds have returned, and flowers are blooming. I hope everyone had a joyous Easter, Passover, and Ramadan.

I am very grateful to the BSNM members who volunteered at the 2022 Fiber Arts Fiesta. It was a blast! There were so many creative artists and so many beautiful things to look at. One of my favorites was a white-on-white quilt, with a winged angel in the center and hundreds of sewn-on crystals.

A special thank you to Jamie Welles and Elizabeth Reisinger who stepped up even during their family emergencies. I'd also like to thank Laurie Tanner who greeted people that stopped by the BSNM booth, demonstrated beading, and even taught a beginning beader how to string a necklace. Other volunteers included Julie Fear, Helen Yackel, Mary Ellen Merrigan, Nan Card, Jill Bartel, Liz Reisinger, Susan Ryan, Amy Bracher, and Mary Ann Cordova. A huge thank you to all of you.

Our donation of jewelry for the Fiber Arts Fiesta charity – Roadrunner Foodbank – was also greatly appreciated. As of Saturday afternoon, all the earrings and bracelets had been purchased!

Thanks to Diane Castillo for teaching the wire weaving class. The class was informative, fun, and the participants had a great time.

Thanks also to Jane Bickelman and Mary Ellen Merrigan for their presentation on Personalities Plus at our April meeting. The organization is all volunteers, and all items collected are prepared and presented to the recipient organizations (programs for women out of domestic violence, sex trade, homelessness, incarceration, sexual assault, etc.).

**Our meeting on Tuesday, May 17 at 1 pm will be lunch at the Sawmill Market in Old Town and then a shopping excursion to Mama's Minerals** (across the street). **Mama's** is giving Bead Society members a very generous 30% discount only on that day. Please remember to bring your membership card.

Upcoming events include:

- Paper bead-making class
- Lariat necklace class
- Private tour of the Turquoise Museum

Sign up for the classes online at our website: [www.beadsocietynm.org](http://www.beadsocietynm.org)

Sign up for the Turquoise Museum is coming soon.

Remember keep calm and keep beading!

See you soon!

Barbara Rosen, BSNM President, 301-351-3303,  
[beadsocietynm@gmail.com](mailto:beadsocietynm@gmail.com), [www.beadsocietynm.org](http://www.beadsocietynm.org),  
[www.facebook.com/BeadSocietyNM/](https://www.facebook.com/BeadSocietyNM/)



## Upcoming Events

<b>May 11</b>	<p style="text-align: center;"><b>Board Meeting</b></p> <p style="text-align: center;"><b>Wednesday, May 11, 2022 11:30 am to 1:30 pm</b></p> <p>The Board will meet to conduct the business of the bead society. Board members, please plan to attend.</p>
<b>May 14</b>	<p style="text-align: center;"><b>Paper Bead Class</b></p> <p style="text-align: center;"><b>Saturday, May 14, 2022 1:30 pm to 3:30 pm</b></p> <p style="text-align: center;"><b>Heights Cumberland Presbyterian Church, 8600 Academy Rd. NE</b></p> <p>Local artist Sue Kapp will teach paper-bead making, including finishing techniques. Sue will teach you how to roll paper to make three shapes of beads. (And you will receive instructions on how to make other shapes.) The paper to make the beads will be pre-cut for you, and Sue will bring acrylic paints and glaze to finish the beads.</p> <p><b>Class fee:</b> \$40  <b>Kit fee:</b> \$10          Class size is limited.</p>
<b>May 17</b> <b>different</b> <b>location</b>	<p style="text-align: center;"><b>General Meeting</b></p> <p style="text-align: center;"><b>Tuesday, May 17, 2022 1:00 pm</b></p> <p style="text-align: center;"><b>Sawmill Market, 1909 Bellamah Ave. NW, Albuquerque</b>          (north of Old Town and across the street from the north end of Mama's Minerals parking lot)</p> <p>The general meeting will be lunch at the Sawmill Market followed by shopping at Mama's Minerals – where members will receive <b>a special 30% discount</b> off their purchases. <b>There will not be a formal group meeting at Mama's Minerals.</b> Appropriate mask wearing, social distancing, and sanitizing are recommended at both venues.</p> 
<b>May</b>	<p style="text-align: center;"><b>Shrinky Dink Class</b></p> <p style="text-align: center;"><b>Date, time, and location TBD</b></p> <p>BSNM member Liz Sands will teach this fun technique. More details to come!          Class size is limited.</p>
<b>June 11</b>	<p style="text-align: center;"><b>Lariat Necklace Class</b></p> <p style="text-align: center;"><b>Saturday, June 11, 2022 1:00 pm to 4:00 pm</b></p> <p style="text-align: center;"><b>location TBD</b></p> <p>BSNM member Nan Card will teach this gorgeous stringing project. Join Nan in making this lariat necklace! It is made with a large leaf toggle and 6 strands of size 11 seed beads in your color choices from your stash. If you prefer, you can make the necklace using 4 strands of size 8 seed beads. Nan has a good supply of silver-tone and gold-tone leaf toggles you can buy for \$2 each. The leaf has a small loop at the opposite end from the large loop to attach 6 strands using the same beads you use for the ends of the long strands for double the fun at the bottom of the lariat when you wear it!</p> <p><b>Class fee:</b> no cost  <b>Kit fee:</b> \$2 for leaf toggle  <b>Students need to bring:</b> size 11 seed beads (or size 8 seed beads) in coordinating colors – enough to make 6 strands (or 4 strands) at least 24 inches long; sparkling and interesting beads to complement the color of each strand such as bugle beads, twisted bugles, 4mm crystals in any shape, etc.; teardrops or daggers for the bottom of the strands; stringing material (such as FireLine, Beadalon, or SoftFlex); appropriate size needle, if needed; crimps, if needed; scissors or cutters; pliers, if needed; bead mat; beading lamp, if desired; magnifier, if needed.          Class size is limited to 15 students.</p> 

## Upcoming Events

### July

### Field Trip to Turquoise Museum

#### Date and time TBD

The Turquoise Museum has agreed to give BSNM an exclusive 3-hour tour of the museum, as well as a silversmithing demonstration and a turquoise cutting demonstration.

Price: \$21 per person (this is a special price for us; regularly \$26)

We must have your reservation (and payment) by July 1 so we can reserve the museum.

## May Raffle Basket

Be sure to buy your raffle tickets for a chance to win the **Bead True Blue raffle basket**. These blue beads will make you anything but blue. Beads in many sizes and shades of blue in glass and stone will allow you to be true to your creativity. (Basket worth at least \$75.)

This basket includes:

- Vintage and contemporary Czech glass beads
- Czech glass seed beads and bugle beads
- Artisan-made lampwork fish bead
- Artisan-made lampwork long oval bead
- Large fused glass cabochon
- Tagua nut beads (dyed)
- Blue lace agate beads
- Sodalite beads and chips
- Mountain jade beads (dyed)
- Stone beads
- Card of nylon beading cord (with attached needle)
- Sterling silver hook-and-eye clasps (10 sets)
- Two Krobo bead bracelets donated by Baskets of Africa (can be worn as is or deconstructed)
- Kenyan beaded box donated by Baskets of Africa
- Jewelry organizer
- Vinyl grocery/tote bag

(Portions of this raffle basket were donated by Jill Bartel, Julie Fear, Deb Novak, Barbara Rosen, and Pam Troutman.)

## Raffle Basket & Door Prize Winners

**Shari Lucero** (visitor to the BSNM meeting and a volunteer for Personalities Plus) won the April raffle basket – Lavender Fields – containing beads in a variety of materials and shades of purple, as well as other goodies.



Jill Bartel presents Shari Lucero with the Lavender Fields raffle basket.

**Nan Card** won the April door prize – a selection from BSNM's stash of bead and jewelry books.

## Volunteering with BSNM

Running an organization of this size requires volunteers with all sorts of talents. **WE NEED YOU** to step up and assist us in many different ways (several Board positions need to be filled), yet not be so demanding of your time and energy that you would hesitate to commit. **Some of you have already "signed on" when asked.**

We need some additional Board members. Currently, the BSNM Board meets on the second Wednesday of each month from 11:30 am to 1:30 pm via Zoom. However, we are flexible if that day and time needs to be shifted to accommodate the schedule of new Board members.

If you would like to volunteer for any level of participation in the group, but you're concerned that you don't know how to do it, (a board position perhaps), let us know and we will explain what the various jobs entail in terms of commitment, time expended, etc. And someone who knows what it takes will work with you to train you. **If you're up for it,** email the Bead Society at [beadsocietytnm@gmail.com](mailto:beadsocietytnm@gmail.com).

**"The most important thing I can tell you about aging is this: If you really feel that you want to have an off-the-shoulder blouse and some big beads and thong sandals and a dirndl skirt and a magnolia in your hair, do it. Even if you're wrinkled."**

**– Maya Angelou**



## Follow-up to April 2022 BSNM Program

by Mary Ellen Merrigan

Our April speaker, Jane Bickelman (co-founder of Pursonalities Plus ABQ), had an amazing surprise shortly after presenting the program to BSNM. As she directed members of Albuquerque Police Department to load and deliver Mother's Day purses for delivery, KOB-TV4 showed up. It was the Pay-It-4-Ward crew...and Jane won the award! She had been nominated for the honor by dedicated volunteer Janette Wiggins (the volunteer who prepares the scripture tags for the purses). Jane received \$400 from the show, which will go a long way toward purchasing needed toiletries for the cause that is near and dear to her heart. The Pay-It-4-Ward segment will air on KOB-TV4 on Monday, May 2, 2022.

Jane also sends a special thank you to each BSNM member who has helped gather purses, donated jewelry or toiletries, and otherwise generously supported Pursonalities Plus ABQ. In her words, "You're all special, caring angels. We're so grateful."



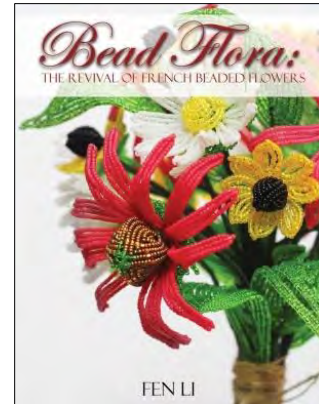
Jane Bickelman and Mary Ellen Merrigan show off some of the donations made to Pursonalities Plus.



When I think I've lost my marbles  
And I've become so stressed  
I am always reminded  
That I am truly blessed  
Here's something to remind you  
If you're thinking this way, too  
You can't lose all your marbles  
'Cause I saved this one for you.

## Beaded Flower Book

*Bead Flora: The Revival of French Beaded Flowers*  
by Fen Li



Something as simple as just seed beads and wire can be transformed into flowers. Learn the old-world art of French beaded flowers with revitalized techniques and patterns from a master designer.

From the foreword: "The French beaded flora is breathtaking, in more ways than one. Developing your skills in flower beading, you will in fact be carrying forward a tradition rooted in the Middle Ages, starting in Venetian glassworks, winding through European monasteries and courts, and eventually crossing the Atlantic. With Fen's inviting book before your eyes, and her classically inspired yet subtly innovative patterns, you will be learning the craft from a successful bead artist who continues to revitalize the artform. Enjoy! – by Ragnar Levi, collector of beaded flowers and author of *Flowers Forever: Bead Craft from France and Venice*.

This book is a guided course starting from the VERY beginning. Instructions are very clear and easy to understand! AND there are videos for all the beginning projects (you download them or watch them on line).

Fen starts the book with a brief history of beaded flowers, and then gets right into the supplies and materials you'll need to get started, giving you just enough information about exactly what materials you need without it being overwhelming. There are links in the back with more resources.

This 8.5-inch by 0.27-inch by 11-inch paperback book was published by Bead Flora Studio in January 2019. It has 114 pages. The list price is \$26.95 on Amazon.



## Bead Buzz: Shaped Beads from Concept to Creation

by Katie Hacker, April 14, 2020

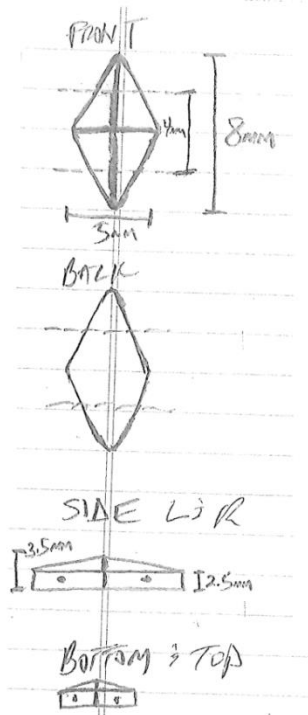
[https://www.interweave.com/article/beading/shaped-beads-concept-to-creation/?utm\\_campaign=Interweave%20Beading%20%20Newsletters&utm\\_medium=email&utm\\_content=211296948&utm\\_source=hs\\_email](https://www.interweave.com/article/beading/shaped-beads-concept-to-creation/?utm_campaign=Interweave%20Beading%20%20Newsletters&utm_medium=email&utm_content=211296948&utm_source=hs_email)



Shaped beads came onto the scene almost a decade ago, and they've sparked our imagination ever since. From squares to diamonds to shells and more, these diminutive two-hole (or more) beads are feats of engineering that inspire creativity. The variety of shapes and colors has absolutely exploded, along with patterns for every style of beaded jewelry.

### The Birth of DiamonDuos

Harold Medina and Avital Rubin of [www.beadmasterusa.com](http://www.beadmasterusa.com) have developed several shaped beads, but they're especially proud of the DiamonDuo. At the time, there weren't many dimensional two-hole beads on the market. Harold explains, "For the facets, we worked very closely with the factory. We wanted it to look like a Ferrari, low to the ground. But, it's tricky to maintain the integrity of the bead structure because of the holes. We worked very closely with a factory in the Czech Republic to achieve the high-end look we wanted."



A rough drawing of shaped beads in the design phase by beadmasterusa.

Typically, prototypes begin with a rough drawing like the one above. Sometimes, three-dimensional models are made. Harold admits that their original DiamonDuo sample was a mock-up made out of cardboard. "We needed to see something physical, not just the drawing. We passed it around the office and got everyone's comments." Avital adds, "When Harold went to the Czech Republic, he took the cardboard model in his carry-on because he was so protective of it." The factory provided a CAD (computer-aided-design) drawing and insight into the feasibility of producing the shape.

### Fixing Issues with Shaped Beads

Some shapes won't work because the bead won't support the hole, or because there would be too much breakage during manufacturing. If these issues can be resolved and the design is approved, then the factory runs a prototype batch. These beads are scrutinized for quality and sent to beadwork designers for experimentation and suggestions. The finished bead design incorporates any necessary refinements.

There are two mold makers in the Czech Republic and a limited number of factories to make the beads, so production time can vary from 2 to 5 months. The expense of developing a shaped bead can reach into tens of thousands of dollars, with copyrighting the design, registering the trademark, production, shipping, and marketing.

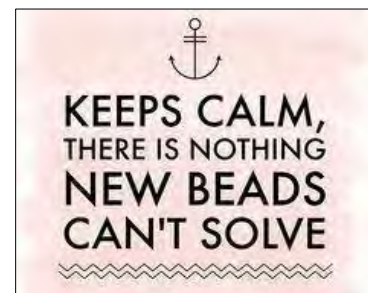
### Get the Wheels Turning

Avital enjoys seeing a new shaped bead inspire people. She says, "We were introducing a new two-hole bead at the Tucson gem shows and a teenage girl came to our demonstration. You could just see her face light up and her wheels start turning." Harold agrees, "This is a very rewarding experience. We have a rule that we never produce a shape that already exists. If we're going to take a risk, we want it to bring something to the world."

Harold says, "In the end, it's a bead. It's not curing an illness. But, it still feels good to create something and see it go out into the world."

As you weave, stitch, or string shaped beads together, take a minute to consider the long process and many hands that brought them to your beading mat.

They're tiny treasures made from imagination, ingenuity, and glass to help you create inventive beadwork and share it with your friends, family, and community.



## Support Our Local Businesses

**A Few of My Favorite Beads:** Call (505) 974-1645 or come by to see our latest beads.

**Baskets of Africa:** Whether you're looking for a new dash of color around the house, something to help you tote and carry, or just a clever way to organize your stuff – we have an abundance of baskets to choose from. Come see our great selection of beautiful artisan made, fair trade baskets. (505) 323-2315 or go to [info@basketsofafrica.com](mailto:info@basketsofafrica.com).

**Beadweaver of Santa Fe:** We are still offering a 10% discount to BSNM members.

**The Beaded Iris:** We are offering 10% discount to BSNM members, as well as our punch cards for future savings. **Also check out our new classes!** Come on into the store and rediscover all the beads, crystals, delicats, findings, thread, and other products you need to complete your beautiful project. **Open beading on Wednesdays.** Store hours are Mon. through Thurs. 10am to 5pm; Fri. through Sat. 10am to 4pm. We will be glad to make an appointment if these hours do not accommodate your schedule or special needs. To schedule an appointment, call 505-299-1856 or email us at [beadedirisstore@aol.com](mailto:beadedirisstore@aol.com).

**Glorianna's Beads (Santa Fe):** 70 West Marcy Street, Suite B. Phone: (505) 982-0353. Open Tues-Wed and Fri-Sun 10:30am to 4pm.

**Mama's Minerals:** Bead Society members get 15% off on regular-priced merchandise. You can buy beads in bulk every day for up to 25% off. Larger discounts up to 30% off our newly restocked clearance beads. **Mama's Minerals** proudly supports local artists, featuring handmade consignment jewelry by Karl Brazzil and Claire Sweeney. [www.MamasMinerals.com](http://www.MamasMinerals.com).

**Meltdown Studio:** New classes available in May (ornamental cocktail ring, double geode cuff bracelet, night sky ring band, and paperclip chain) at <https://www.meltdownstudio.com/group-classes-1>.

**New Mexico Bead Company:** New Mexico Bead Company has a **new brick-and-mortar home** and is open to the public: 4111 Louisiana NE, Albuquerque (near the Uptown area). (505) 243-2600 Website: <https://www.nmbead.com/>.

**Santa Fe Jewelers Supply:** Open 9:00am to 5:00pm. Curbside pickup, mail order, or visit our showroom today! Order on our website at [www.sfjs.net](http://www.sfjs.net) day or night. Phone: 505-988-9157.

**Stone Mountain Bead Gallery:** We're open Mon. through Sat. from 11am to 6pm; Sun. 12:30pm to 4:30pm. Call 505-385-2200 to arrange contactless pickup. **30% off on glass beads and 20% off other items for BSNM members.** We have Swarovski crystals! Also, modern chevron beads hand made by Art Seymour.

**Thomason Stone Supply:** Store hours are Mon. through Sat. 9am to 5pm. You can place an order by calling us at 888-353-9934 or 505-268-9934, or by filling out a contact form on our website, <https://www.thomasonstonesupply.com/>.

**Thunderbird Supply Company:** See our website (<https://www.thunderbirdsupply.com/>) for online and in-store specials. Store hours: Mon.-Fri. 9am-6pm; Sat. 10am-5pm.

**Treasures of the Gypsy/Gypsy Raven:** Treasures of the Gypsy Show Room is open by appointment, as well as for classes. Please contact Pamela Armas to schedule your appointment at 505-847-0963, or email her at [gypsytreasures@cs.com](mailto:gypsytreasures@cs.com)

## Beading Groups

**Bosque Farms:** Do you live in the Bosque Farms area? Join BSNM member Kathy Jost at the Bosque Farms Community Center for the **BFCC Bead Group on the 2nd and 4th Thursday of the month from 2:00 pm to 5:00 pm.** Bosque Farms Community Center is located at 950 N Bosque Loop in Bosque Farms, New Mexico. Phone: (505) 869-5133.

**Placitas:** Several members of BSNM meet **each Thursday from 12:30 pm to 3:30 pm at the Placitas Senior/Community Center** at 41 Camino de la Huertas in Placitas, New Mexico. Come early and have lunch with some of us!

## Classes at Mama's Minerals

**Sunday, May 1, 2022:**

**Preserved Insect Terrarium Globe Class 1-5pm**

Are you super into natural décor? Bugs? Funky yet graceful handmade art? Create a small terrarium globe featuring a real preserved beetle, crystals from Mama's Minerals, and other craft supplies, all supplies are included, but if you have some small (less than 1") supplies you love feel free to bring 'em!

**Saturday, May 14, 2022:**

**Basic Necklace & Earring Class 10am-1pm**

Necklaces! Earrings! Do you love stones, beads, fossils or gems? Ever wish you could wear those beloved objects? Learn to create your own professional quality jewelry. Practice using tools, stones and beads. Add to your own jewelry box, make fabulous gifts, or begin your own jewelry business.

BYOB! (bring your own beads) ... **simple findings will be provided.** There will be time for shopping during the class - all bead purchases during class will be 20% off.

**Sunday, May 29, 2022:**

**Basic Necklace & Earring Class 11am-1pm**

Necklaces! Earrings! Do you love stones, beads, fossils or gems? Ever wish you could wear those beloved objects? Learn to create your own professional quality jewelry. Practice using tools, stones and beads. Add to your own jewelry box, make fabulous gifts, or begin your own jewelry business.

BYOB! (bring your own beads) ... **simple findings will be provided.** There will be time for shopping during the class - all bead purchases during class will be 20% off.



## Recap of Fiber Arts Fiesta 2022

photos by Barbara Rosen and Rebecca Wardlow

In case you didn't make it to the Fiber Arts Fiesta this year, here are some photos of the BSNM booth and BSNM's portion of the education display ("Color Fantasies").



Visitors to the BSNM booth



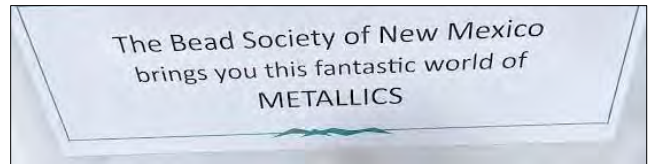
Volunteer Laurye Tanner (from the back) demonstrates beadwork for a visitor



Volunteer Nan Card points out some of the amazing beadwork in the BSNM booth



Volunteers Susan Ryan and Amy Bracher



Sign for the BSNM education display



BSNM education display: metallics. Signs within the display provided information about the metals gold, silver, pewter, copper, and bronze.



A number of smaller beaded items were corralled in a shadowbox

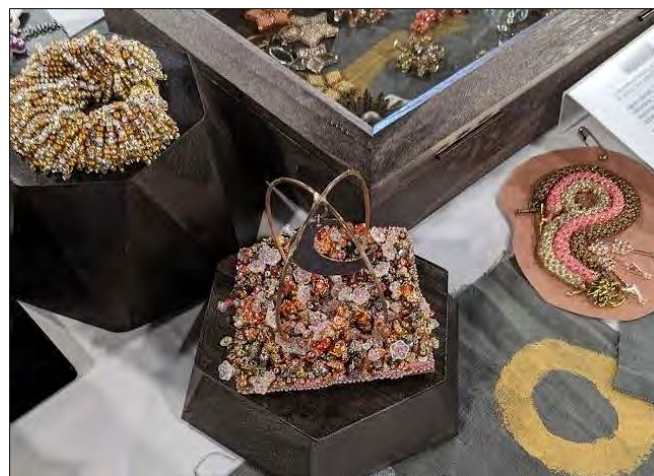




Close-up of the BSNM education display. Thanks to everyone who contributed their talents and beadwork to make the display a success – including Patti Farley (set of four memory-wire bracelets) and Helen Yackel (two copper wire and gemstone hair clips). Thanks also to Mary Ellen Merrigan for creating the hand-painted fabrics used in the display.



Clockwise from right: silver bouquet by Collette Chamberlain; framed mixed metal beadwork by Liz Reisinger; copper necklace by Mary Ann Cordova



Clockwise from upper left: mixed metals beaded "cha-cha" bracelet by Laurye Tanner; beaded bracelets (with some pink!) by Liz Reisinger; moon garden beaded sculpture by Mary Ellen Merrigan



Mixed metal necklace and a pink beaded dog (made from Mardi Gras beads!)



Hand-painted and decoupage beads by Jill Bartel



## Gem of the Month – Chrysocolla

Chrysocolla is a blue green crystal with a high copper content. It is translucent to opaque with a vitreous to dull luster. This stone is a hydrated phyllosilicate mineral often found in botryoidal (grapelike) or rounded masses, vein fillings, or crusts. It forms in the oxidation zones of copper ore bodies. Chrysocolla is a minor ore of copper and forms in association with quartz, limonite, azurite, malachite, cuprite, and other secondary copper minerals.

A 2006 study has produced evidence that chrysocolla may be a microscopic mixture of the copper hydroxide mineral spertiniite, amorphous silica, and water.



Botryoidal chrysocolla from the L'Etoile du Congo Mine, Lubumbashi, Haut-Katanga, DR Congo



Powder-blue chrysocolla as stalactitic growths and as a thin carpet in vugs inside a boulder of nearly solid tyrolite from the San Simon Mine, Iquique Province, Chile (size: 14.1 x 8.0 x 7.8 cm)



Banded white to blue green chrysocolla from Bisbee, Arizona (size: 12.2 x 5.5 x 5.2 cm)

The name comes from the ancient Greek *chrysos* and *kolla* – meaning "gold" and "glue" – in allusion to the name of the material used to solder gold.

Due to being somewhat more common than turquoise, its wide availability, and vivid, beautiful blue and blue-green colors, chrysocolla has been popular for use as a gemstone for carvings and ornamental use since antiquity. It is often used in silversmithing and goldsmithing in place of turquoise and is relatively easy to work and shape. Chrysocolla exhibits a wide range of Mohs hardness ranging from 2 through 7, which is dependent on the amount of silica incorporated into the stone when it is forming. Generally, dark navy blue chrysocolla is too soft to be used in jewelry, while cyan, green, and blue-green chrysocolla can have a hardness approaching 6, similar to turquoise. Chrysocolla chalcedony (also referred to as gem silica) is a heavily silicified form of chrysocolla that forms in quartz deposits and can be very hard and approach a hardness of 7.

Chrysocolla has often been called "multi-colored turquoise" and, until recently, was not considered a gemstone in its own right. It has since become a favored stone for jewelry, symbolizing prosperity, luck, and fortitude.

For thousands of years, chrysocolla has been known throughout the world as a stone of calming reconciliation and reassurance. In ancient Egypt, it was called the "wise stone" because it shielded and encouraged the mind during negotiations. Those who wore it generally came up with clever compromises and resolutions. This stone also has the ability to help people who are violent to become more sensitive and tolerant which is why, as an ambassador, Cleopatra wore chrysocolla jewelry everywhere she went.

In crystal healing, chrysocolla links the energy of the heart chakra upward toward the throat, the center of expression. It helps to facilitate clear emotional expression and the communication of the heart's desire. A powerful physical healing stone, chrysocolla supports the function of the thyroid gland, as well as easing throat problems. Chrysocolla is also a healing crystal for asthma and high blood pressure. This stone is also helpful in dealing with anger and trauma recovery.

Chrysocolla promotes level headedness, encouraging clarity of thought, and a neutral, calm attitude during turbulence by purifying the home, environment, and the mind. Use it to decrease nervousness and irritability.

Chrysocolla is a birthstone for the zodiac sign of Gemini (May 21 to June 20).

Chrysocolla can be found wherever large copper deposits occur, such as Africa, Mexico, and the U.S. state of Arizona (where it is sometimes called Apache chrysocolla). Chrysocolla from the state of Arizona is a mixture of chrysocolla, turquoise, jasper, lapis, malachite, and quartz crystal minerals.

## Placitas Library Call for Entries

### July/August 2022 Art Exhibit – Call for Artists

Exhibition Dates: July 16 to August 25, 2022

### Shades of Red

The color **RED** has the potential to touch all our senses: the taste of a tart cherry, the brilliance of a flaming sunset, the sound of an explosion, the smell of a rose, the tingle of passion and seduction, or perhaps the sensation of a slap across the face!

For our July/August exhibition, the art committee requests artists consider how the power of red activates our senses, especially during July and August, the hottest days of the year.

#### Important Dates:

**Submission Deadline: June 3**

Artwork/Exhibit Installation: July 15

Artists Reception: July 29

Exhibit Removal: August 26

Exhibit Coordinators: Colleen Gregoire & Linda Hughes

Please visit link for submission form and exhibit guidelines: <https://placitaslibrary.com/programs/art-exhibits/call-for-artists/artist-submission/>

Please address questions to the Art Committee at [PCL.art.committee@gmail.com](mailto:PCL.art.committee@gmail.com)



## Mysterious Inner Worlds

recommended by Mary Ann Cordova

**February 18 – July 2, 2022**

**University of New Mexico Art Museum  
203 Cornell Dr. NE, Albuquerque, NM 87106  
(at Popejoy Hall on UNM campus)**

*Mysterious Inner Worlds* is the first solo exhibition in New Mexico featuring Anila Quayyum Agha. The exhibition features four sculptures activated by light, including the large-scale light installation titled *Intersections* (2014) and the debut of the sculpture *Steel Garden (Red)* (2021), as well as two-dimensional pieces that include **beads**.

Agha combines forms from Islamic architecture with her own concepts about patterns of sacred and worldly spaces. Her work ranges in scale from monumental installations to intricate embroidered drawings. She is inspired by her personal experiences as a woman and an immigrant from Pakistan, arriving in the US just before September 2001, as well as her concerns about the environment. **Agha's work engages more broadly** with the dynamic and contradictory relationships among immigrant experiences as well as the intersectionality of gender, religion, labor, and social codes.



Anila Quayyum Agha (American, b. Pakistan 1965). *Captive Shadows II (Black and Purple)*, 2021. Encaustic, cut paper, embroidery and beads on paper, 30 x 30".

For more information about the exhibit, go to <https://artmuseum.unm.edu/exhibition/mysterious-inner-worlds/>

The University of New Mexico Art Museum is free, open to the public, and here to inspire. From housing the largest collection of art in New Mexico, to bringing cutting edge contemporary artists to Albuquerque and offering workshops that invite everyone to create, we are dedicated to art and its power to ignite and connect us.



## Bead Store for Sale

After 30 years in retail and 50 years in jewelry, imports, and wholesale, **Robert Steinberg, owner of Stone Mountain Bead Gallery (voted Albuquerque's Best Bead Store) is selling off his huge accumulation beads, jewelry, and world handicrafts.**

Included are thousands of strands of vintage Czech beads; African trade beads; gemstone and mineral beads; Native American turquoise and heishi; and more. Also loads of silver and gemstone jewelry; Bali silver beads; wood, ceramic, glass, brass, and stone beads; Swarovski crystals; costume jewelry; seed beads by the pound; and handicrafts, art, and jewelry from Nepal, India, Tibet, Thailand, Bali, and Turkey. Collectables and statues – oriental, Native American, dragons, skulls, Buddhas, malas, and rosaries.

Quantity discounts!

Also, building for sale: retail space on Route 66/ Central Ave. in popular Nob Hill neighborhood. 5,000 square feet currently divided into two stores. Signage and huge parking lot.

Contact: Robert Steinberg  
Stone Mountain Bead Gallery  
4008 Central Ave. SE, Albuquerque, NM 87108  
Phone: 505-260-1121  
Email: [rsteinberg50@comcast.net](mailto:rsteinberg50@comcast.net)

## Glass Exhibit at Museum of Indian Arts and Culture

**May 1, 2021 through June 30, 2022**

The Museum of Indian Arts and Culture  
710 Camino Lejo, Santa Fe, New Mexico  
(on Museum Hill)

*Clearly Indigenous: Native Visions Reimagined in Glass* is a groundbreaking exhibit of works in glass by 33 Indigenous artists, plus leading glass artist Dale Chihuly who introduced glass art to Indian Country.

## Bead Fest 2022

**August 17-20, 2022**

**Lancaster Marriott at Penn Square, Lancaster, PA**

Please reach out to us at [BeadFest@goldenpeakmedia.com](mailto:BeadFest@goldenpeakmedia.com) for any questions or concerns.

## Paula Adams Estate

Paula Adams' beautiful beaded amulet necklaces are for sale at The Beaded Iris. All proceeds go to Paula, who is in assisted living in Albuquerque. Paula taught beading at the original Poppy Fields. Her attention to detail is very evident in her work.



## Fundraiser for Barbara Butcher

Barbara Butcher, who has been battling cancer, had a stroke earlier this year that left her with limited use of her right arm and leg. Consequently, she will probably need 24-hour assistance going forward.

To help combat this expense, Jerome Nunez of A Few of My Favorite Beads has volunteered to sell the leftover stock from Barbara's former store, The Beading Heart of Santa Fe. **Sales are cash only. All monies will go to Barbara for her medical expenses.**

**You must make an appointment to purchase these beads. Please call Jerome at (505) 974-1645.**

Jerome says he can accommodate appointments 7 days a week, beginning at about 11am, but says that Wednesdays are probably the best days.

All items are upstairs at Jerome's store (up a spiral staircase). If you are unable (or unwilling) to climb the stairs, Jerome said he is willing to bring boxes down to you – if you have an idea of what you are looking for.

## Keep in Your Thoughts

Liz Reisinger, whose mother recently passed away

Betty Smith, who is recovering from hand surgery and a recent car crash where her car was T-boned and rolled over – and she walked away from the crash!

Linda Reyes-Alicea, whose father recently passed away

Barbara Rosen, who is recovering from hand/wrist surgery

Pat Verrelle, who is recovering from a series of small surgeries

Sally Moore, whose son passed away

Barbara Butcher, former owner of Beading Heart of Santa Fe, who has been undergoing heavy chemotherapy and who requires additional care since her stroke

Indea Sanchez, who has been undergoing intensive chemo treatments for stage 5 gall bladder cancer

Teri Lawson, who is undergoing chemo and radiation treatments for breast cancer

If you would like to send a card or note of encouragement to any of these members, please address the envelope to them **in care of the Bead Society of New Mexico, P.O. Box 91655, Albuquerque, New Mexico 87199**, and we will ensure that they get your messages.

## Happy Birthday

Happy Birthday to members with a birthday in April.

If your birthday isn't listed here, please let us know at [beadsocietynm@gmail.com](mailto:beadsocietynm@gmail.com) so we can wish you a Happy Birthday!

## Get More Information on the BSNM Website

■ **Classes:** For classes taught by our business members and other non-BSNM-sponsored classes, go to

<https://beadsocietyofnewmexico.wildapricot.org/Bead-Time> for dates, times, and descriptions.

To review class details and to register online, log in to the BSNM website with your email and password and go to the event page

<https://beadsocietyofnewmexico.wildapricot.org/Meetings-Classes-and-Events>.

■ **Craft Shows and Other Events:** To see upcoming shows that our members are involved in, go to the Members Art Shows listing at

<https://beadsocietyofnewmexico.wildapricot.org/Art-Shows>. Also, if you have an art show you are participating in, don't forget to send Teresa Kenyon (at

[beadsocietynm@gmail.com](mailto:beadsocietynm@gmail.com)) the information and event link so we can include your event.

## BSNM Financials Available on Website

The monthly and annual financial reports for the Bead Society of New Mexico are now available in the "Members Only" section of the BSNM website (you must have/create an account on the website to access these documents). Go to [www.beadsocietynm.org](http://www.beadsocietynm.org) and log in to the website (click on "Log In" in the far upper right corner of the homepage; you need to register first if you haven't done so before). Hover over the "Members Only" section on the right end of the categories bar with your mouse and click on "Financials" in the drop-down menu. Then click on the document you want to read. (You may need to temporarily disable your pop-up blocker since the documents may open in a new window or tab).

## 2022 BSNM Calendar

The following is the calendar for BSNM meetings and events for 2022. Dates and events are subject to change. Bead Times have been cancelled until further notice.

General meeting, 3rd Tues., 6:00pm	Board meeting, 2nd Wed., 11:30am	Classes	Special events
Jan. 18	Jan. 12		Annual gala
Feb. 15	Feb. 9	Flowing River bracelet	Annual bead swap
March 15	March 9	Sweetheart necklace	Make doo-dahs for Fiber Arts
April 19	April 12	Wire weaving	Fiber Arts Fiesta
May 17	May 11	Paper beads	Mama's Minerals
June 21	June 8	Lariat necklace	
July – no meeting	July 13		Field trip
August 16	August 10		
Sept. 20	Sept. 14		State Fair; flea market
Oct. 18	Oct. 12		Elections
Nov. 15	Nov. 9		
Dec. – no meeting	Dec. 14		





## Join the *Soft Flex* Community!

Live Design Challenges  
Tutorials  
BOGO Offers  
Giveaways  
Special Discount Offers  
Live Sales








Join the "Soft Flex Very Important Beading Studio" Group on Facebook for jewelry making inspiration!


 Subscribe to our YouTube Channel for video tutorials!

**www.SoftFlexCompany.com**

Toll Free Phone (866) 925-3539 • U.S. Phone (707) 938-3539 • Free Shipping on orders over \$65 in the USA

Use coupon code **BeadSociety10** to get 10% off! • DOES NOT APPLY WITH OTHER DISCOUNTS • LIMIT 4 USES PER CUSTOMER

SoftFlex loves to support bead societies, as they are the backbone to our beading community. We have a coupon code for BSNM members. Just enter the code **BeadSociety10** at checkout. Coupon gives 10% off of each item, but it does not apply on top of other discounts and there is a limit of 4 uses per customer. No expiration date.



## Your One Stop For the Holidays!

Drilled & Polished Stones & Fossils, Local  
Artisan Jewelry, Rock Tumblers, Stone Lamps,  
NatGeo Kits, MamaMade Christmas  
Ornaments, Gift Certificates,  
& MUCH MORE

505-266-8443  
www.MamasMinerals.com  
New Website!



We specialize in providing care for clients who need companionship as well as for clients who need end of life care.

**Help For Your Loved One:**

- Medication reminders
- Cooking favorite meals
- Total personal care including bathing, dressing, and assisting with hygiene
- Changing bed linens and doing laundry
- Light housekeeping
- Assistance with transportation to doctor's appointments, errands, and shopping

9004 Menaul Blvd NE #11,  
Albuquerque, NM 87112  
505-798-0978

Owner: Elizabeth Sands (BSNM member)  
[easands@msn.com](mailto: easands@msn.com)



Jerome Nuñez  
Owner

**A FEW OF MY FAVORITE BEADS**  
Seed Beads • Delicas  
Swarovski Crystals & Pearls  
Fire Polish, Daggers & More

10137 Edith Blvd. NE  
Albuquerque, NM 87113

(505) 974-1645

No additional discount for BSNM members

Beads • Findings • Classes

*The Beaded Iris*

(505) 299-1856  
1512-F Wyoming Blvd. NE (N of I-40 at Constitution)  
Albuquerque, NM 87112  
www.thebeadediris.com

10% discount for BSNM members

**Baskets of Africa.com**  
info@basketsofafrica.com

1-505-323-2315 – Local  
1-800-504-4656 – Toll Free

Visit Our Showroom:  
Open 10-3 Mon-Fri

1714 Eubank Blvd NE  
Albuquerque, NM

FAIR TRADE  
FEDERATION  
MEMBER

15% discount for BSNM members

**STONE MOUNTAIN BEAD GALLERY**  
Beads, Jewelry & Handicrafts of the World

Voted Albuquerque's Best Bead Shop!

Robert Steinberg - owner

4008 Central Ave SE  
Albuquerque, NM 87108 505-260-1121

Mon-Sat 11-6 Sun 12:30-4:30  
www.stonemountainbeads.com

20% discount for BSNM members

**Beads and Beyond by Betty**  
Designer  
Betty Smith  
bettygardens@gmail.com  
520-405-8142  
www.BeadsandBeyondbyBetty.com

*Cynthia A. Romero*  
Tax Preparation & Planning  
Bookkeeping & Payroll Services

(505) 296-0521  
(505) 263-3646  
RomeroIII@msn.com

Member NATP

### Get Your BSNM Discount

To get your BSNM discount at our business members' stores, you must show your current membership card. They won't accept expired cards or membership renewal emails or a letter from your mom!

Don't lose out. Be sure you have your 2022 BSNM membership card and show it when you make a purchase.

Tim & Larry's  
**ELIXIR BOUTIQUE CHOCOLATES**

### Elixir Chocolates

6616 Gulton Ct. NE,  
Suite 60  
Albuquerque, NM 87109  
(off Osuna Road, west of Jefferson)  
Open Monday – Friday  
10:00 am – 3:00 pm  
Call ahead on weekends.  
505-933-5125



## Procedure for Submitting Articles for Publication

Producing a quality monthly publication as well as maintaining an up-to-date website and Facebook page is not an easy task. We have three people who work hard to ensure that our members have the most timely and accurate information possible. But these tasks take lots of time and can't be done properly without the assistance of our members. Please remember to follow these procedures when submitting information to be shared with the general membership:

- Send all information to [beadsocietynm@gmail.com](mailto:beadsocietynm@gmail.com)
- Please send just one topic per email and be sure to include the topic in the subject line and indicate that the topic is for publication.
- Do not send articles or information as a response to another email; send a new, separate email.
- Be sure that any artwork, etc., you send is copy-ready in a format that can easily be downloaded and copied – preferably as an attachment (JPG, TIF, or PNG, or incorporated into a Word document).
- Please send complete information. The members of the Communications Committee are not mind readers. ☺ Please provide full names of persons, full addresses and contact information, dates and times, etc.
- Information to be included in the monthly publication, either the Newsletter or Bead Blast, MUST be received no later than the 20th of the prior month. Information received after that date will be shared via social media and on the BSNM website, and used for the following month's publication if appropriate.

## 2022 Board of Directors

Due COVID-19 precautions, The Board of Directors has been meeting on the second Wednesday of the month via Zoom.

*All members are welcome to attend.*

President .....	Barbara Rosen
First Vice President - Special Events and Workshops.....	
Second Vice President – Programs.....	Pat Verrelle
Treasurer .....	Elizabeth (Liz) Reisinger
Secretary .....	Helen Yackel
Membership Chair .....	Deb Cole
Newsletter Editor .....	Jill Bartel
Volunteer Coordinator.....	Fran Hahn (State Fair)
Member-at-Large .....	
Past President.....	
Webmaster.....	Amanda Archuleta
Social Media Manager .....	
Photographer.....	Julie Fear
Historian .....	
Meeting Coordinator .....	Elizabeth (Liz) Reisinger
Membership Recruiter.....	
Fiber Arts Council Representative.....	Jamie Welles
Fiber Arts Education Committee Representative .....	Elizabeth (Liz) Reisinger

Copyright © 2022 Bead Society of New Mexico. All rights reserved.

Address: Bead Society of New Mexico, P.O. Box 91655, Albuquerque, New Mexico 87199

Website: [www.beadsocietynm.org](http://www.beadsocietynm.org)

Facebook: <https://www.facebook.com/BeadSocietyNM/>

Contact email: [beadsocietynm@gmail.com](mailto:beadsocietynm@gmail.com)

You are receiving this newsletter because you opted in at [beadsocietynm.org](http://beadsocietynm.org).