



BSNM Newsletter

September 2022

The mission of this newsletter is to inform our members of the activities, events, and classes in the local beading community and to provide a forum where members can share beading knowledge and techniques.

In This Issue

Message from the President
Upcoming Events
New Members
September Raffle Basket
Library Exhibit
Jewelry Challenge
Studio Space Available
Volunteering with BSNM
Rio Rancho Bead Estate
Dichroic Glass
2023 BSNM Elections
Support Our Local Businesses
Beading Groups
State Fair Intake
Turquoise United Wrap-Up
Fiber Arts Council
Gem of the Month
Keep in Your Thoughts
BSNM Financials Available on Website
2022 BSNM Calendar
Workshops at Gypsy Raven
Placitas Library Call for Entries
Art Exhibits and Craft Shows
Business Member Ads
Procedure for Submitting for Publication
2022 Board of Directors

This newsletter welcomes new ideas from members and solicits articles and items of interest. Any special events taking place in your life (birthdays, anniversaries, condolences needed, new job, moving, births, weddings, awards, trips, transitions, etc.)? All manuscripts are subject to editing. The editor does not assume responsibility for the accuracy of information contained in the articles received. Please send all contributions for the newsletter to the editor in care of the Bead Society of New Mexico.

From the President

Hello Members,

I've smelled chili roasting here in Corrales, which means it's almost Fall. What's your favorite part of Fall? Pumpkins, cooler weather, pumpkin spice anything/everything?

I heard that the August meeting was a success and that it helped you with your State Fair entries. A big thank you to members Mary Ellen Merrigan and Jerome Nunez for putting this fantastic program together! There are many beautiful beaded pieces at the State Fair. Judging was on Monday, August 29. For the results of the judging, check the State Fair website in the next few weeks. Good luck to all who entered!

A big **shout-out and thank you** to all who stepped up to do the intake at the State Fair! It could not have been done without each and every one of you. It was heartening to be with so many members. It was a lot of work and there was a lot of laughter, and food! Please think about volunteering for other events.

The September 20th general meeting is going to be a lot of fun. Member Liz Sands will teach us how to make and use Shrinky Dinks. Once thought of as a craft for children, Shrinky Dinks can be used for making jewelry, home décor, key chains, and more. I can't wait!

I'd also like to thank Pat Verrelle, Claudette Jaramillo, Caroline Bleil, and Deb Cole for representing the Bead Society and staffing our booth at the recent Turquoise United convention. It was a huge success and I hear there's going to be another convention next year. Stay tuned for more information.

Elections are a necessary part of running any organization and ours will be held at the October meeting. We need new people with new ideas to help the Bead Society grow and thrive. **Please think about accepting a position on the Board.** Many jobs require very little time or work. Not all positions are voting positions, so you don't have to attend the Board meetings. It doesn't matter if you are a new member or have been in the Bead Society for years. **We need you!**

October also means it's time for the Bead Society's Halloween party. Feel free to wear a costume, or not. We will have a special entertainer at the party. Details to come.

See you at the September meeting. In the meantime, Stay Calm and Bead On.

Barbara Rosen, BSNM President, 301-351-3303,

beadsocietynm@gmail.com, www.beadsocietynm.org,
www.facebook.com/BeadSocietyNM/



Upcoming Events

September 13**Board Meeting****Tuesday, September 13, 2022 11:30 am to 1:30 pm**

The Board will meet to conduct the business of the bead society. Board members, please plan to attend.

September 19**Pick Up Day for New Mexico State Fair****Monday, September 19, 2022****9:00 am to 5:00 pm****Creative Arts Building, NM State Fairgrounds**

Pick up your State Fair entries.

We also need volunteers for returning items to their owners. Sign up on the BSNM website.**September 20****General Meeting****Tuesday, September 20, 2022 6:00 pm to 8:00 pm****(set-up, social time, and buying raffle tickets beginning at 5:30 pm)****Heights Cumberland Presbyterian Church, 8600 Academy Rd. NE**

BSNM member Liz Sands will be teaching us how to make Shrinky Dink (shrink plastic) flower shapes that we can then make into earrings.

Most of us remember playing with Shrinky Dinks as kids – coloring fun shapes and watching them twist and curl in the oven until finally shrinking down to a tiny perfect little shape. At the September meeting we are going to revisit that joy by creating shrink art earrings. Come choose, outline, color, and trim your flowers. Then watch the magic begin as you shrink them into shape. Add some fun beads and you have your special pair of earrings.

What you need to bring:

- Pencil
- Sharp scissors
- Pliers and wire cutters you would normally use for making jewelry
- Any beads (colors and shapes, especially flower shapes – see photo for example) you want to use in making the earrings
- Heat gun, if you have one

The rest of the supplies will be provided for you.



Shrink plastic flowers



Finished shrink plastic earrings

Please bring your State Fair entries for show-and-tell – especially if you won a ribbon!Masks are optional. We must wipe down the tables and must be out of the room by 8:30 pm.**October 18****General Meeting****Tuesday, October 18, 2022 6:00 pm to 8:00 pm****(set-up, social time, and buying raffle tickets beginning at 5:30 pm)****Heights Cumberland Presbyterian Church, 8600 Academy Rd. NE**

We will hold our annual Board elections (see the article in this newsletter for a description of the available positions).

We will also have our annual Halloween party (costumes are optional). BSNM will provide some food, but we need you to sign up to bring additional treats.

Be sure to bring your entry for the Orange and Black Jewelry Challenge.Masks are optional. We must wipe down the tables and must be out of the room by 8:30 pm.

September Raffle Basket

Be sure to buy your raffle tickets (only available at the general meeting) for a chance to win the **Bead World raffle basket**. Beads are a form of adornment around the world and in almost every culture. Feel like a world traveler with this collection of beads and other items (worth at least \$100).

This basket includes:

- Seed beads and Delicas – Japan
- Vintage Swarovski crystals – Austria
- Glass pearls – Czech Republic
- Vintage glass beads – Czech Republic
- Vintage plastic beads – Germany
- Polymer clay bead – United States
- Lampwork glass bead – United States
- Lampwork glass bead – Afghanistan
- Amber nuggets – Africa or Dominican Republic
- Kazuri ceramic beads and pendant – Kenya
- Batik bone beads – Africa
- Krobo recycled glass beads – Ghana
- Krobo recycled glass bead bracelets – Ghana (donated by Baskets of Africa)
- Strand of recycled glass beads – Indonesia
- “Cinnabar” beads – China
- Inlaid metal pendant – India
- Agate and metal bead – Tibet/Nepal
- Carved jade pendant – China
- Strand of black onyx chips
- Vintage brass chains (new “old stock”)
- Triangular bead scoop
- Map-themed project/tool/pencil case
- Travel jewelry case
- Custom designed, bead-themed mouse pad
- Custom designed, bead-themed tote bag
- Grey plastic organizer basket

(Portions of this raffle basket were donated by Jill Bartel, Barbara Rosen, and Pam Troutman.)

Library Exhibit

Cherry Hills Library has contacted BSNM and asked if we would like to create a display in one of their glass cases for December 2022. They would also welcome demonstrations/workshop during that month.

Of course we said yes! We are getting all the details from the library and will let you know as we know more.

(This is strictly an exhibit – no selling – similar to the displays we’ve had in years past in the library at the South Broadway Cultural Center.)

September is Eye Health & Safety Month.

Be kind to your eyes. Always bead in adequate light – and use a magnifier/magnifying glasses if you need them. Rest your eyes periodically while beading.

Orange and Black Jewelry Challenge

Orange and black doesn’t have to mean Halloween. Monarch butterflies, American redstarts, Baltimore orioles, and puffins (birds), tigers, and clown fish are all orange and black. In addition, orange symbolizes the warmth of autumn and the last of harvest season, while black represents the cold, dark, and long winter to come. So your challenge is to create a piece of orange and black jewelry (Halloween-themed or not).

Rules:

1. All submissions must have been completed since the October 2021 BSNM general meeting.
2. You must create a piece/set of jewelry (such as necklace, earrings, and/or bracelet).
3. **At least 50% of the finished project must be black and orange.** This can be beads and/or jewelry elements (cabochons, rhinestones, chain, pendants, charms, etc.) incorporated into the design. Other colors may be added as desired.
4. You may add any elements such as paint, decoupage, and/or found objects you need to complete your design.
5. Your **finished project must be brought to the October 2022 general meeting** where members will vote on the entries.
6. Judging will be based on creativity in presentation and materials, and mastery in craftsmanship. Judging will also be based in part on how closely the entries followed the rules. Prizes will be awarded!

Happy beading and good luck with the challenge! Try to use this challenge to broaden your beading horizons. Learn something new or try something different!



Studio Space Available

Business partners Sally Jewell and Sally Williams have opened a 1,700-square-foot studio in the Hoffmantown Shopping Center at Menaul and Wyoming for all fiber arts crafts. They offer guilds, groups, or individuals a meeting space, a gathering work space, or an opportunity to use the space to teach classes.

The partners are both mothers and work full time, so the space is currently open Fridays and Saturdays, but will open and host any group when requested.

The Sewing Place Abq
8252 Menaul Blvd. NE, Albuquerque, NM 87110
thesewingplaceabq@gmail.com, 505-705-2952
www.thesewingplaceabq.com

Volunteering with BSNM

Running an organization of this size requires volunteers with all kinds of talents. **WE NEED YOU** to step up and assist us in many different ways, yet not be so demanding of your time and energy that you would hesitate to commit.

We need some additional Board members. There are 13 Board positions for the Bead Society – most of which are not filled. There are currently 6 Board members – most of whom are doing double duty to keep the Bead Society functioning.

Currently, the BSNM Board meets on the second Tuesday of each month from 11:30 am to 1:30 pm via Zoom or in person. However, we are flexible if that day and time needs to be shifted to accommodate the schedule of new Board members.

If you would like to volunteer for any level of participation in the group, but you're concerned that you don't know how to do it, (a board position perhaps), let us know and we will explain what the various jobs entail in terms of commitment, time expended, etc. And someone who knows what it takes will work with you to train you. **If you're up for it**, email the Bead Society at beadsocietynm@gmail.com.

Rio Rancho Bead Estate

Jerome Nunez, of A Few of My Favorite Beads, knows of a bead estate in Rio Rancho with beads for sale at a discount. There are some stipulations to buying:

- You must call Jerome and make an appointment to go to the bead estate (it is not at his shop)
- The bead estate is only available on Tuesdays
- Limit of 3 people at a time
- Jerome will drive you to the bead estate

To make an appointment or if you have any questions, call 505-974-1645.

Congratulations

Congratulations to Pam Troutman for getting her talk on jewelry care and repair advertised in the August 2022 issue of the *New Mexico Marketplace* magazine. The photo that accompanies the article shows Pam helping Linda Gregory at one of Pam's classes.

How is Dichroic Glass Made?

"Dichroic" is defined as the property of having more than one color, especially when viewed from different angles. Dichroic-coated glass is produced by a process called "thin-film physics." This process is normally used as an interference filter in scientific measuring or correcting applications. To get this effect, thin layers of metallic oxides are deposited upon the surface of the glass in a high-temperature, vacuum furnace.

The glass to be coated is carefully cleaned, and then fastened to a rotating arm in the top of the furnace chamber. The materials used for coating are placed in a crucible on the bottom of the furnace. Air inside of the chamber is removed with a vacuum pump, and the chamber is heated to 300°F. The metallic oxides used for the coating are vaporized by an electron beam, and the glass is evenly coated with many thin layers. The resulting color is determined by the individual oxide compositions and the coatings sequence. Since the total thickness is so minute (3 to 5 millionths of an inch), the coating must be supported on some stable substance. Glass is used when the final product is going to be worked into beads or other shapes. It is transparent, stable, withstands relatively high temperatures, and is not affected by moisture, solvents, or most acids.

Dichroic coatings transmit certain wavelengths of light, while reflecting others, thus creating an interference-effect similar to the iridescence observed in nature's fire opal, dragonfly wings, and hummingbird feathers. The transmitted color is different than the reflected color, and when the light rays pass straight through the glass they are less effected by refraction (or bent) than when passing at an angle, which makes the light travel a greater distance through the glass. It is this distance that causes a color shift (change from one color to another). When dichroic glass is viewed at even slightly different angles, you will see a variety of different colors as you rotate it.

Once the dichroic glass is created, it can be melted in a flame and wrapped around a mandrel to create beads. Or the glass can be worked in any number of ways (such as fusing) to produce incredible works of art.



BSNM 2023 Elections

The BSNM elections are next month! All positions on the 2023 Board are open for anyone who wants to run. We encourage everyone to consider volunteering to help the Bead Society.

For the current version of the bylaws, which contains the complete duties of the officers, go to www.beadsocietynm.org and log in to the website (you may need to register first if you haven't done so before). Click on the Members Only section in the upper right corner and then click on the Bylaws box on the left side of the page that opens (you may need to temporarily disable your pop-up blocker since the PDF opens in a new window or tab). In the bylaws you can read about every position on the Board and decide which one best suits your abilities and your time. The following is a brief description of the duties of the Board positions:

President (currently Barbara Rosen) – Preside at all general and Board meetings; oversee committees; sign contracts with the Treasurer; provide a president's column for the newsletter

1st Vice President-Classes and Special Events – Coordinate instructors and students for bead society-sponsored workshops; create brochures and flyers for workshops, when required; assist with special events in which BSNM participates

2nd Vice President-Programs (currently Pat Verrelle) – Plan and arrange programs for the general meetings and for each Bead Time session

Treasurer (currently Liz Reisinger) – Be custodian of all BSNM funds; keep an itemized account of all receipts and disbursements; submit a budget for Board discussion and approval; make payments in accordance with the budget upon receipt of receipts and completed reimbursement forms; prepare monthly financial reports; file taxes and renew business license

Secretary (currently Helen Yackel) – Record the proceedings of the Board meetings and the October general election meeting; send minutes to Board members in a timely fashion; conduct general correspondence of BSNM regarding business-related items

Membership Chair (currently Deb Cole) – Collect dues and distribute membership cards; collect monies for raffle tickets at general meetings; process online renewals for members and new members; maintain accuracy of Gmail and BSNM website databases of members

Membership Recruiter – Oversee and form a Welcome Committee; visit bead stores, shows, and events for the purpose of recruiting new members

Newsletter Editor (currently Jill Bartel) – Solicit, edit, and write articles for the Newsletter; maintain business member ads for publication; publish newsletter via email to all members

Volunteer Coordinator – Coordinate volunteer recruitment and scheduling for events where BSNM has a table/booth or where the BSNM's assistance has been requested; ensure membership applications and business cards are available for these events

Member-at-Large – Be responsible for representing the suggestions and concerns of the general membership to the Board

Webmaster (currently Amanda Archuleta) – Manage the content posted on the BSNM website; maintain the technical contracts for website, including eCommerce, webhosting, and event coordination applications

Social Media Manager – Maintain the BSNM Facebook page and other social networking accounts; add BSNM events to Facebook page; monitor Facebook activity for messages, likes, and unauthorized links to commercial pages

Meeting Coordinator (currently Liz Reisinger) – Recruit volunteers to bring refreshments to the general meetings; set up and monitor the show-and-tell tables; assist with setting up and taking down tables and chairs, if necessary; make sure there are paper plates, napkins, forks, etc., for each meeting

Photographer (currently Julie Fear) – Take photographs at meetings and events, including all contest entries and winners; provide photos to Webmaster, Social Media Manager, and Newsletter Editor for publication

Historian – Maintain speakers' records; keep "lessons learned" documentation (record classes taught, when, and by whom)

We also need a **representative to the Albuquerque Fiber Arts Council** and a **representative to the Fiber Arts Education Committee**. These individuals (or it could be one person) attend the council/committee meetings and report back to the BSNM Board.

Please decide to run for office. You will be very instrumental in continuing the growth of the BSNM and making the necessary changes to stay relevant and helping us to stay on an upward trajectory. It is an honorable thing to sacrifice some time for something you care about and believe in and that benefits others.



Support Our Local Businesses

A Few of My Favorite Beads: Call (505) 974-1645 or come by to see our latest beads.

Baskets of Africa: Whether you're looking for a new dash of color around the house, something to help you tote and carry, or just a clever way to organize your stuff – we have an abundance of baskets to choose from. Come see our great selection of beautiful artisan made, fair trade baskets. (505) 323-2315 or go to info@basketsofafrica.com.

Beadweaver of Santa Fe: We are still offering a 10% discount to BSNM members.

The Beaded Iris: We are offering 10% discount to BSNM members, as well as our punch cards for future savings. Come on into the store and rediscover all the beads, crystals, delicats, findings, thread, and other products you need to complete your beautiful project.
Open beading on Wednesdays. Store hours are Mon. through Thurs. 10am to 5pm; Fri. through Sat. 10am to 4pm. We will be glad to make an appointment if these hours do not accommodate your schedule or special needs. To schedule an appointment, call 505-299-1856 or email us at beadedirisstore@aol.com.

Glorianna's Beads (Santa Fe): 70 West Marcy Street, Suite B. Phone: (505) 982-0353. Open Tues-Wed and Fri-Sun 10:30am to 4pm.

Mama's Minerals: Bead Society members get 15% off on regular-priced merchandise. You can buy beads in bulk every day for up to 25% off. Larger discounts up to 30% off our newly restocked clearance beads. Mama's Minerals proudly supports local artists.
www.MamasMinerals.com.

Meltdown Studio: Check out our **new and returning classes** (Hexagon Corset Ring, Beginning Small Metals, Intro to Lapidary, Interchangeable Hoops, Spinner Ring, Stamped Cuff Bracelet Set) at <https://www.meltdownstudio.com/group-classes-1>.

New Mexico Bead Company: New Mexico Bead Company has a **new brick-and-mortar home** and is open to the public: 4111 Louisiana NE, Albuquerque (near the Uptown area). (505) 243-2600. Website: <https://www.nmbead.com/>.

Santa Fe Jewelers Supply: Open 9:00am to 5:00pm. Curbside pickup, mail order, or visit our showroom today! Order on our website at www.sfjs.net day or night. Phone: 505-988-9157.

Stone Mountain Bead Gallery: We're open Mon. through Sat. from 11am to 6pm; Sun. 12:30pm to 4:30pm. Call 505-385-2200 to arrange contactless pickup. **20% off for BSNM members.** We have Swarovski crystals! Also, modern chevron beads hand made by Art Seymour.

Thomason Stone Supply: Store hours are Mon. through Sat. 9am to 5pm. You can place an order by calling us at 888-353-9934 or 505-268-9934, or by filling out a contact form on our website, <https://www.thomasonstonesupply.com/>.

Thunderbird Supply Company: See our website (<https://www.thunderbirdsupply.com/>) for online and in-store specials. Store hours: Mon.-Fri. 9am-6pm; Sat. 10am-5pm.

Treasures of the Gypsy/Gypsy Raven: Treasures of the Gypsy Show Room is open by appointment, as well as for classes. Please contact Pamela Armas to schedule your appointment at 505-847-0963, or email her at gypsytreasures@cs.com **Check out our new workshop!**

Beading Groups

Bosque Farms: Do you live in the Bosque Farms area? Join BSNM member Kathy Jost at the Bosque Farms Community Center for the **BFCC Bead Group on the 2nd and 4th Thursday of the month from 2:00 pm to 5:00 pm.** Bosque Farms Community Center is located at 950 N Bosque Loop in Bosque Farms, New Mexico. Phone: (505) 869-5133.

Placitas: Several members of BSNM meet **each Thursday from 12:30 pm to 3:30 pm at the Placitas Senior/Community Center** at 41 Camino de la Huertas in Placitas, New Mexico. Come early and have lunch with some of us!

Saturday, September 3

9 am to 1 pm

FREE admission

SID CUTTER PILOT
PAVILION

BALLOON FIESTA PARK
ALBUQUERQUE

**Sell Stuff.
Donate Stuff.
Buy Stuff.**

1. reserve your table(s) on our website
2. clean out your stash
3. set up your table (or drop off your stuff as a donation) Friday afternoon Sept 3

2022

**DE-STASH
SALE**

New & lightly
used craft
supplies, tools
and fabric

abqmodernquiltguild.com
or scan QR Code for info




State Fair Intake

Thanks to all the individuals who helped with intake for the Jewelry & Beadwork competition at the 2022 New Mexico State Fair. (I would try to name all of you, but **I'd probably leave someone out** – so please believe that we greatly appreciate your time and efforts.) Pictured below are a few of this year's volunteers.



Mary K Phillips, Pat Verrelle, and Deb Cole cleaning the display cases



Laurye Tanner, Helen Yackel, and Nan Card are ready to sign in the exhibitors

We had over 50 individuals enter items in the competition this year. Probably three-quarters of them entered more than one item into the competition. Of course, our challenge was determining the section (age/experience level) and class (type of beadwork) for each person and item. But we got to see a wide variety of jewelry, and even signed up a new member or two.

Our youngest competitor this year is Caroline Wood – the only entry in Section 435 – Pre-Teen. Her beaded necklace is very lovely and sparkly.

By the time you read this newsletter, the judging of the Jewelry & Beadwork competition will have been completed. (Thank you, thank you, thank you to our judges.) And the ribbons will have been awarded. Best of Show is awarded only in classes where there are three (3) or more entries, according to State Fair criteria.

On judging day we awarded the Betty Whiteman Best in Show ribbon (a large turquoise-and-silver rosette). The criterion for this award is as follows:

The Betty Whiteman Best in Show award is given to an outstanding Bead Society of New Mexico individual. The person is an active member who volunteers, often leading events, and participates in challenges. They represent the values and work to fulfill the mission of BSNM.

This award is to honor former member Betty Whiteman (who we believe helped start the Bead Society of New Mexico – if any of our long-standing members remember anything differently, please let us know).

This is the first year we will also award the Kenny Halstead Creativity ribbon (a large red-and-yellow rosette). The criterion for this award is as follows:

The Kenny Halstead Creativity award is given to the beadwork, jewelry, or mixed media piece that exhibits outstanding creativity and uniqueness.

This award is to honor former member Kenny Halstead, his creativity in beadwork and mixed media, and his encouragement to other members to enter their work in the Jewelry & Beadwork competition at the New Mexico State Fair.



Caroline Wood showing off her sparkly necklace that she entered in the State Fair.
(photo printed with permission of her parents)



Pat Verrelle (middle) said, "It was a blast decorating the cases with Barbara (Rosen, left) and Helen (Yackel, right), and just as much a challenge with those hard-earned ribbons and gorgeous entries and jewelry. **I can't wait for the BSNM members to see the results!!**"

Turquoise United Wrap-Up

Apparently the BSNM booth at the Turquoise United Gem Show was a hit. People enjoyed seeing our display of beadwork – **and that's saying a lot** considering the fabulous displays of turquoise in the other booths! Thank you to those members who allowed their jewelry and other items to be displayed.



Claudette Jaramillo hanging out in the BSNM booth.

Thank you also to Caroline Bleil, Deb Cole, Claudette and Norman Jaramillo, and Pat Verrelle for setting up the BSNM booth and sitting there through two hot days to show off our members talents. They occasionally took a break to attend a symposium session or to fondle and purchase some of the gorgeous turquoise in the other booths.



Symposium panel: G.L. Miller, turquoise expert (from Albuquerque); Jo Dan Lowry, one of the top 10 experts on turquoise the world (from Albuquerque); Dr. Aaron Palke, Senior Manager of Research for GIA (regulates all diamond and precious gems).

Jo Dan Lowry of Albuquerque is preparing a new grading system for turquoise worldwide for the Gemological Institute of America (GIA) and to train the regulators at GIA. Jacob Lowry, director of the Turquoise Museum in Albuquerque, was the host and director for Turquoise United. He was entertaining and informative, hosting very productive symposium

sessions, which were presented on the museum's grounds.



Deb Cole purchasing natural Fox Turquoise nuggets (which is no longer mined).



Caroline Bleil was thrilled with her rough turquoise purchased from a New York turquoise dealer.



Claudette Jaramillo was so excited about buying a chunk of rough turquoise from an Iranian turquoise mine from the same New York dealer. She will be stabilizing, cutting, and polishing her turquoise.



Pat Verrelle showing off some varasite slabs from one of the vendors.



Cabochons from the oldest turquoise mine in the world, which is in Iran. They have determined that turquoise was being mined there before the Egyptian pyramids were built.

Another exciting aspect of the weekend was the opportunity to meet and talk with Jay King, of Jay King Designs. His jewelry is sold on HSN and at his factory outlet in Albuquerque, Desert Rose Trading. Viewing the jewelry on display at the BSNM booth was "a walk down memory lane" said Jay King: One of the necklaces on display was one his designs from about 15 years ago.



Jill Erickson, manager for Desert Rose Trading; Claudette Jaramillo; Caroline Bleil; and Jay King, of Jay King Designs, hang out at the BSNM booth.

Fiber Arts Council

The Albuquerque Fiber Arts Council is looking for candidates who are interested in promoting fiber arts in New Mexico to fill board positions. If interested, please go to <https://abqfiberartscouncil.org/fiber-arts-council/> to fill out an application. (This is different than being BSNM's representative to the Council.)

The Albuquerque Fiber Arts Council was formed in 1997 to provide the opportunity for local fiber guild members to show their work to the public. It has grown from six guilds then to almost twenty. The Board of Directors has seven members who are dedicated to continuing the tradition of hosting the Albuquerque Fiber Arts Fiesta every other year. As a 501(c)3 organization, the proceeds from the Fiesta provide funding for other public shows and scholarships.

The Council is also seeking individuals interested in working on the marketing committee. If you would like to be involved and work with a great team promoting Fiber art, please email michellejackson@quiltfashions.com

2022 HARVEST CRAFT FAIR & PLANT SALE

FRI, SEPTEMBER 23
SAT, SEPTEMBER 24 9 am to 4 pm

Autumn & Holiday Themed Vendors!
Fun & Food! Gourd Painting!
Chile Ristra Demo!
Mums & Autumn Bedding Plants

ALBUQUERQUE GARDEN CENTER
10120 Lomas Blvd NE (Inside Los Altos Park)
AlbuquerqueGardenCenter.org
505-296-6020

Visit our
Unique Garden Shop!

Council of Albuquerque Garden Clubs is a 501(c)(3) non-profit organization

Jill Bartel will have a booth at this show.

Gem of the Month – Tourmaline

Tourmalines are precious stones displaying a unique splendor of colors. According to an ancient Egyptian legend, this is the result of on its long journey from the earth's heart up towards the sun, tourmaline traveled along a rainbow, collecting all the colors. That is why it is called the "rainbow gemstone."

However, the name "tourmaline" was derived from the Sinhalese expression *turamali*, which translates as "stone of mixed colors." The name itself refers to the unique spectrum of colors displayed by this gemstone.

In order to understand this multitude of colors, you need to know a little gemology. Most people consider tourmaline to be a single mineral. But in fact, it is a group named for several different, but closely related complex aluminum-borosilicate minerals that vary in composition. Tourmaline is a crystalline silicate mineral group in which boron is compounded with elements such as aluminum, iron, magnesium, sodium, lithium, or potassium.

Tourmaline is piezoelectric – meaning that heating or squeezing a crystal will create a different electrical charge at each end of the stone, one positive and one negative. Tourmaline crystals generally form in igneous or metamorphic rocks.

Elbaite is the gemstone tourmaline and comes in many varied and beautiful colors. The slightest changes in chemical composition result in completely different colors of stone. In fact, tourmaline crystals showing one color are quite rare; generally, a crystal displays several shades and colors. Depending on the angle of view, the color will be different or at least show a different intensity. The deepest color always appears along the main axis.

The color of tourmaline can vary from clear to pink, rosy-red, yellow, honey, green, blue, violet, brown, and black. Black is the most common. The different shades of colored tourmalines have been assigned different names in the gemstone trade:

Red tourmalines are called *rubellite*, provided it shows the same fine ruby-red shade in daylight and in artificial light. If the color changes with the source of light, then it is called a pink tourmaline.

Blue (light blue to bluish green) tourmalines are called *indicolite*.

Dark yellow/golden-brown to dark brown tourmalines are called *dravite*.

Black to brownish black tourmalines are called *schorl*. Although too opaque to be used as a gemstone, schorl is used as an ornamental stone when found as inclusions in quartz, a stone called *tourmalinated quartz*.

Green tourmalines are called *verdelite*. However, if its fine, emerald-like green is caused by traces of chromium, the stone is called *chromium-tourmaline*.

Yellow tourmalines have no "special" name. Stones of brilliant color come from Malawi.

Colorless tourmalines are called *achroite*, from a Greek word meaning "colorless."

Stacked color tourmalines, where the color zones are arranged on top of the other, are called *Paraigeios tourmaline* or *rainbow tourmaline*.

These are by no means all the names that tourmaline has achieved: there are still to be mentioned the bi-colored and multi-colored stones. For example, slices taken from tourmaline crystals with a red heart and green border are called watermelon tourmaline; slices with a clear heart and a black border are called *Moor's head tourmaline*.

Pink to red tourmaline often has more visible inclusions than green to blue varieties.



A slice of watermelon tourmaline

Brightly colored Ceylonese gem tourmalines were brought to Europe in great quantities by the Dutch East India Company to satisfy a demand for curiosities and gems. Tourmaline was sometimes called the "Ceylonese Sri Lankan Magnet" because it could attract and then repel hot ashes due to its pyroelectric properties.

Tourmaline is said to enhance one's understanding, increase self-confidence, and amplify one's psychic energies. The stone is also said to neutralize negative energies (whether from people or from the environment), dispel fear and grief, and aid in concentration and communication. It is also supposed to be useful in relaxing the body and mind, and to help in the treatment of infectious diseases, anxiety, blood poisoning, arthritis, and heart disease. Wear or carry black tourmaline to help you stay grounded and focused on the present moment and to counter electromagnetic stress. Pink and watermelon tourmalines are used to soothe the heart and the emotions.

Tourmalines are mined everywhere in the world. There are important occurrences in Brazil, Sri Lanka, and South and Southwest Africa. The stone is also found in Nigeria, Zimbabwe, Kenya, Tanzania, Mozambique, Madagascar, Pakistan, and Afghanistan. Tourmalines are also found in the United States, most notably in Maine and California. Although there are rich occurrences of tourmaline all over the world, good qualities and fine colors are only rarely offered on the market.

Tourmaline is a birthstone for October. It is also the gem of the eighth wedding anniversary.

Bead Store for Sale

After 30 years in retail and 50 years in jewelry, imports, and wholesale, **Robert Steinberg, owner of Stone Mountain Bead Gallery (voted Albuquerque's Best Bead Store) is selling off his huge accumulation beads, jewelry, and world handicrafts.**

Included are thousands of strands of vintage Czech beads; African trade beads; gemstone and mineral beads; Native American turquoise and heishi; and more. Also loads of silver and gemstone jewelry; Bali silver beads; wood, ceramic, glass, brass, and stone beads; Swarovski crystals; costume jewelry; seed beads by the pound; and handicrafts, art, and jewelry from Nepal, India, Tibet, Thailand, Bali, and Turkey. Collectables and statues – oriental, Native American, dragons, skulls, Buddhas, malas, and rosaries.

Quantity discounts!

Also, building for sale: retail space on Route 66/ Central Ave. in popular Nob Hill neighborhood. 5,000 square feet currently divided into two stores. Signage and huge parking lot.

Contact: Robert Steinberg
Stone Mountain Bead Gallery
4008 Central Ave. SE, Albuquerque, NM 87108
Phone: 505-260-1121
Email: rsteinberg50@comcast.net

Paula Adams Estate

Paula Adams' beautiful beaded amulet necklaces are for sale at The Beaded Iris. All proceeds go to Paula, who is in assisted living in Albuquerque. Paula taught beading at the original Poppy Fields. Her attention to detail is very evident in her work.



Albuquerque Fall Gem, Mineral & Jewelry Show



September 30 – October 2, 2022

Open daily 9:00 am to 5:00 pm

**Creative Arts Building, Expo NM State Fairgrounds,
300 San Pedro NE, 87108**

FREE ADMISSION! Parking is \$7

Enter at Gate 3 @ San Pedro and Copper.

60 dealers, mineral specimens, rough, slabs, jewelry, cabochons, beads, fossils, petrified wood, tools, equipment.

Contact: Jay Penn, 505-883-4195, jaypenn246@gmail.com,
<http://abqfallshow.wix.com/abq-fall-show>

Fundraiser for Barbara Butcher

Barbara Butcher, who has been battling cancer, had a stroke earlier this year that left her with limited use of her right arm and leg. Consequently, she will probably need 24-hour assistance going forward.

To help combat this expense, Jerome Nunez of A Few of My Favorite Beads has volunteered to sell the leftover stock from Barbara's former store, The Beading Heart of Santa Fe. **Sales are cash only. All monies will go to Barbara for her medical expenses.**

You must make an appointment to purchase these beads. Please call Jerome at (505) 974-1645.

Jerome says he can accommodate appointments 7 days a week, beginning at about 11am, but says that Wednesdays are probably the best days.

All items are upstairs at Jerome's store (up a spiral staircase). If you are unable (or unwilling) to climb the stairs, Jerome said he is willing to bring boxes down to you – if you have an idea of what you are looking for.

Keep in Your Thoughts

Amanda Archuleta, who is having surgery

The family of Suzanne Allen, who recently passed away
Claudette Jaramillo, whose daughter recently passed away
Barbara Butcher, former owner of Beading Heart of Santa Fe, who has been undergoing heavy chemotherapy and who requires additional care since her stroke

If you would like to send a card or note of encouragement to any of these members, please address the envelope to them **in care of the Bead Society of New Mexico, P.O. Box 91655, Albuquerque, New Mexico 87199**, and we will ensure that they get your messages.

Happy Birthday

Happy Birthday to our members with a birthday in September.

If your birthday isn't listed here, please let us know at beadsocietynm@gmail.com so we can wish you a Happy Birthday!

Get More Information on the BSNM Website

■ **Classes:** For classes taught by our business members and other non-BSNM-sponsored classes, go to <https://beadsocietyofnewmexico.wildapricot.org/Bead-Time> for dates, times, and descriptions.

To review class details and to register online, log in to the BSNM website with your email and password and go to the event page <https://beadsocietyofnewmexico.wildapricot.org/Meetings-Classes-and-Events>.

■ **Craft Shows and Other Events:** To see upcoming shows that our members are involved in, go to the Members Art Shows listing at <https://beadsocietyofnewmexico.wildapricot.org/Art-Shows>. Also, if you have an art show you are participating in, don't forget to send Teresa Kenyon (at beadsocietynm@gmail.com) the information and event link so we can include your event.

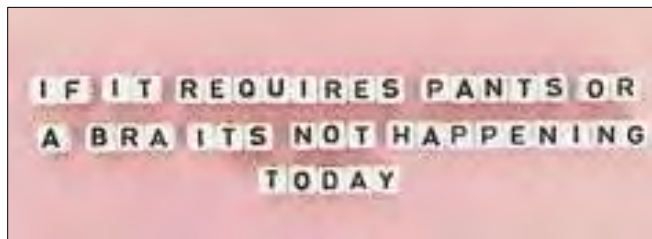
BSNM Financials Available on Website

The monthly and annual financial reports for the Bead Society of New Mexico are now available in the "Members Only" section of the BSNM website (you must have/create an account on the website to access these documents). Go to www.beadsocietynm.org and log in to the website (click on "Log In" in the far upper right corner of the homepage; you need to register first if you haven't done so before). Hover over the "Members Only" section on the right end of the categories bar with your mouse and click on "Financials" in the drop-down menu. Then click on the document you want to read. (You may need to temporarily disable your pop-up blocker since the documents may open in a new window or tab).

2022 BSNM Calendar

The following is the calendar for BSNM meetings and events for 2022. **Beginning June 2022, our Board meetings changed to the 2nd Tuesday at 11:30am.** Dates and events are subject to change. Bead Times have been cancelled until further notice.

General meeting, 3rd Tues., 6:00pm	Board meeting, 2nd Tues., 11:30am	Classes	Special events
Jan. 18	Jan. 12		Annual gala
Feb. 15	Feb. 9	Flowing River bracelet	Annual bead swap
March 15	March 9	Sweetheart necklace	Make doo-dahs for Fiber Arts
April 19	April 12	Wire weaving	Fiber Arts Fiesta
May 17	May 11	Paper beads	Mama's Minerals
June 21	June 7	Lariat necklace	
July – no meeting	July 12		Field trip
August 16	August 9		
Sept. 20	Sept. 13		State Fair
Oct. 18	Oct. 11		Elections
Nov. 15	Nov. 8		
Dec. – no meeting	Dec. 13		



Workshops at Gypsy Raven Studio/Gallery

All workshops will be held at Gypsy Raven Studio/Gallery located at 111 W. Broadway, Mountainair, NM 87036. For multiple day workshops Pamela Armas will make arrangements with local hotels with special rate discounts for those that need overnight lodging. Lunch and dinner can either be brought by the attendee or at B Street Deli, which has a good menu for take-out.

With COVID and its variants still with us, we are being very careful and cleaning all surfaces before and after the workshops. We are making sure each person has their own 6-foot table for social distancing and masks are optional (per State of New Mexico).

To sign up for any of the workshops, contact Pamela Armas by email at gypsytreasures@cs.com and she will email you a form to fill out to register for class. Mail form and check made out to Pamela Armas to: Pamela Armas, PO Box 748, Mountainair, NM 87036. Phone: 505-847-0963. **Maximum of 10 students per workshop. No cancellation refunds within 72 hours of workshop.**

A Whimsical Halloween Wall Hanging

Friday-Sunday, September 30, October 1 & 2, 2022 – three-day workshop

Time: 10:00 am – 5:00 pm

In this workshop you will create a small wall hanging measuring approx. 10 inches x 13.5 inches featuring a selection of Halloween die-cuts that will fit within a finished 3-inch x 3-inch squares. There will be 12 squares total to display these images. Halloween images are made by Scott Lyon of Hush Hush Gallery. You will add a multi-strand tassel bordering each side of your wall hanging with a selection of beads that you bring to class.



Your kit fee includes: all wall hanging fabric, inner batting for interfacing, ornate wire armature for wall hanging, whimsical Halloween die cuts.

Bring to Class:

Scissors

Ruler

Pencil/paper for notes

Fabri-Tac glue

Sewing machine ready to go

Black and orange thread

Extra sewing machine needles (just in case)

Assorted hand sewing needles

Beading needles

Lots and lots of beads with larger holes (oranges, blacks, Halloween beads) for the beaded tassel (Don't be afraid to bring too much! More is better!)

Gypsy will have for sale (at her cost) the size 8 beads that you will need to bead around each of the 12 squares.

Cost: \$250.00 plus a \$30 kit fee (kit fee can be paid at workshop). Deposit of \$100 is due August 15, 2022. Receipt of your deposit will hold your workshop place. Material list will be sent to you once you register.

Grounded in Clay Exhibit

through May 29, 2023

Museum of Indian Arts & Culture

710 Camino Lejo, Museum Hill, Santa Fe

\$7 for NM residents; free admission for NM residents the first Sunday of each month; Wednesday admission free for NM seniors with ID

The "Grounded in Clay: The Spirit of Pueblo Pottery" exhibit is a rare exhibition curated by the Native American Communities it represents. Organized by **Santa Fe's School for Advanced Research and the New York-based Vilcek Foundation**, it give voice to more than 60 individual members of 21 tribal communities. These members chose and wrote about artistically or culturally unique pots spanning 1,000 years.

The show shifts traditional curatorial models by combining individual voices from the Native communities where the pots were made. Elysia Poon, **Indian Arts Research Director**, said "In many cases, the curators picked pots that weren't even from their own community. It resulted in a much more complex and rich mixture than we imagined. There is no single curatorial voice."

For example, one curator chose a circa 1890 Zuni stew bowl because of its geometric design featuring lightning strikes to bring blessings to crops. Another chose a 1972 Joseph Lonewolf (Santa Clara Pueblo) seed jar with contemporary designs for its innovation.

Dating from precontact to the present day, the featured pots connect and contrast the lives of people living in pueblo communities spanning from New **Mexico's 19 Rio Grande pueblos to the West Texas** community of Ysleta del Sur to the Hopi of Arizona. Curators of various ages, backgrounds, and professions chose and wrote about one or more works.

LIFE'S HIDDEN TREASURES



October/November Art Exhibit – Call for Artists

Submission Deadline: September 2, 2022

Exhibition Dates: October 1–November 10, 2022

LIFE'S HIDDEN TREASURES can be found in the friends and family that surround us every day, the wonderful destinations that provide solace and renewal, or events that surprise us with the unexpected.

There are the life changing moments that illuminate and elevate our awareness of what is seen and unseen; with time, these become the treasured experiences of our being for years to come....

For our October/November exhibition at the library, the PCL Art Committee invites you to submit works that reflect the hidden treasures that you have discovered through your own personal experiences.

Submission forms and detailed information can be found on the PCL website:
<http://placitaslibrary.com/programs/art-exhibits/call-for-artists/artist-submission/>

Please address questions to the Art Committee at PCL.art.committee@gmail.com



PLACITAS *Community* **LIBRARY**



SANDIA HEIGHTS ARTISTS™

19th Annual Studio Tour September 17&18, 2022

SATURDAY & SUNDAY (10 a.m. - 5 p.m.)

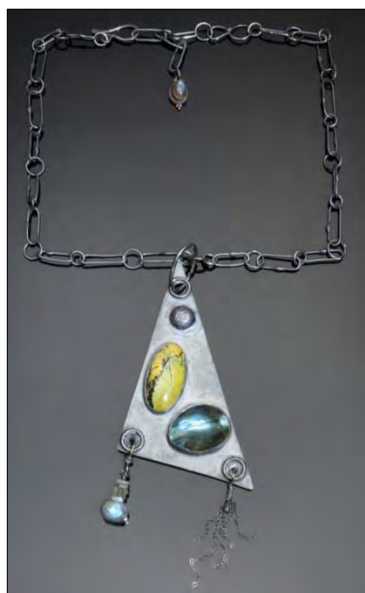
SandiaHeightsArtists.com



The event will feature 36 artists in 14 different tour stops.

For participating artists or to download a brochure with map, go to <https://SandiaHeightsArtists.com>.

Mary Ellen Merrigan (BSNM member) and Lynda Burch are at Stop #6 on the tour.





DESERT ROSE TRADING
Factory Outlet
Paseo Village Shopping Center
8001 Wyoming Blvd. NE Suite B-5 Albuquerque, NM
Open Mon - Sat 10a - 5p 505-821-6723

We're Opening!!!
Sept 12 - Oct 8
Jewelry Up To 70% Off
Home Decor Up To 60% Off
Select Bead Strands 50% Off

Giveaways & Flash Sales
www.desertrosedirect.com/factoryoutlet.html



Whole Bead Show 2023 Show Dates

Tucson, Arizona – January 27-30, 2023
The Annabelle Studio

Santa Fe, New Mexico – March 24-26, 2023
Santa Fe Community Convention Center

Las Vegas, Nevada – June 2-4, 2023
Palace Station



Join the *Soft Flex* Community!

Live Design Challenges
Tutorials
BOGO Offers
Giveaways
Special Discount Offers
Live Sales








Join the "Soft Flex Very Important Beading Studio" Group on Facebook for jewelry making inspiration!


 Subscribe to our YouTube Channel for video tutorials!

www.SoftFlexCompany.com

Toll Free Phone (866) 925-3539 • U.S. Phone (707) 938-3539 • Free Shipping on orders over \$65 in the USA

Use coupon code **BeadSociety10** to get 10% off! • DOES NOT APPLY WITH OTHER DISCOUNTS • LIMIT 4 USES PER CUSTOMER

SoftFlex loves to support bead societies, as they are the backbone to our beading community. We have a coupon code for BSNM members. Just enter the code **BeadSociety10** at checkout. Coupon gives 10% off of each item, but it does not apply on top of other discounts and there is a limit of 4 uses per customer. No expiration date.



Your One Stop For the Holidays!

Drilled & Polished Stones & Fossils, Local
Artisan Jewelry, Rock Tumblers, Stone Lamps,
NatGeo Kits, MamaMade Christmas
Ornaments, Gift Certificates,
& MUCH MORE

505-266-8443
www.MamasMinerals.com
New Website!



We specialize in providing care for clients who need companionship as well as for clients who need end of life care.

Help For Your Loved One:

- Medication reminders
- Cooking favorite meals
- Total personal care including bathing, dressing, and assisting with hygiene
- Changing bed linens and doing laundry
- Light housekeeping
- Assistance with transportation to doctor's appointments, errands, and shopping

9004 Menaul Blvd NE #11,
Albuquerque, NM 87112
505-798-0978

Owner: Elizabeth Sands (BSNM member)
[easands@msn.com](mailto: easands@msn.com)

dorje designs



Style, soul, and history . . .
all in a single piece of adornment.

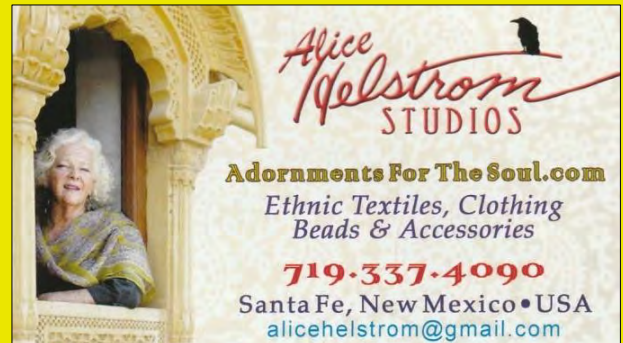
Anna Holland designs unique ethnic jewelry and tribal jewelry using contemporary, antique, and ancient beads and artifacts. Her handcrafted necklaces, bracelets, and rings are all one-of-a-kind treasures, collected and worn by women and men around the world.

<http://www.dorjedesigns.com/>
info@dorjedesigns.com



15% discount for BSNM members

Alice Helstrom Studios



10% discount for BSNM members

Treasure of El Dorado

Lewis S. Toth, Owner and Designer

Handmade Southwestern style jewelry,
beadwork with semi-precious gems, corals,
shells, artistic metal, and glass beads
from all over the world,
and fetishes imported from Philippines.

Best material and workmanship guaranteed.

Offered to you at affordable prices
for your enchantment

6508 Rancho Ladera Road NE
Albuquerque, New Mexico 87113

Phone/Fax: (505) 821-4276

email: lulutoth7@aol.com

registered New Mexico small business
since 1993

Jerome Nuñez
Owner

A FEW OF MY FAVORITE BEADS
Seed Beads • Delicas
Swarovski Crystals & Pearls
Fire Polish, Daggers & More

10137 Edith Blvd. NE
Albuquerque, NM 87113

(505) 974-1645

No additional discount for BSNM members

Beads • Findings • Classes

The Beaded Iris

(505) 299-1856
1512-F Wyoming Blvd. NE (N of I-40 at Constitution)
Albuquerque, NM 87112
www.thebeadediris.com

10% discount for BSNM members

Baskets of Africa.com
info@basketsofafrica.com

1-505-323-2315 – Local
1-800-504-4656 – Toll Free

Visit Our Showroom:
Open 10-3 Mon-Fri

1714 Eubank Blvd NE
Albuquerque, NM

FAIR TRADE
FEDERATION
MEMBER

15% discount for BSNM members

STONE MOUNTAIN
BEAD GALLERY

Beads, Jewelry &
Handicrafts of the World

Voted Albuquerque's Best Bead Shop!

Robert Steinberg - owner

4008 Central Ave SE
Albuquerque, NM 87108 505-260-1121

Mon-Sat 11-6 Sun 12:30-4:30
www.stonemountainbeads.com

20% discount for BSNM members

Beads and Beyond by Betty
Designer
Betty Smith
bettygardens@gmail.com
520-405-8142
www.BeadsandBeyondbyBetty.com

Cynthia A. Romero

Tax Preparation & Planning
Bookkeeping & Payroll Services

(505) 296-0521
(505) 263-3646
RomeroIII@msn.com

Member NATP

Get Your BSNM Discount

To get your BSNM discount at our business members' stores, you must show your current membership card. They won't accept expired cards or membership renewal emails or a letter from your mom!

Don't lose out. Be sure you have your 2022 BSNM membership card and show it when you make a purchase.

Tim & Larry's
ELIXIR
BOUTIQUE
CHOCOLATES

Elixir Chocolates

6616 Gulton Ct. NE,
Suite 60
Albuquerque, NM 87109
(off Osuna Road, west of
Jefferson)

Open Monday – Friday
10:00 am – 3:00 pm
Call ahead on weekends.
505-933-5125

Procedure for Submitting Articles for Publication

Producing a quality monthly publication as well as maintaining an up-to-date website and Facebook page is not an easy task. We have three people who work hard to ensure that our members have the most timely and accurate information possible. **But these tasks take lots of time and can't be done properly without the assistance of our members.** Please remember to follow these procedures when submitting information to be shared with the general membership:

- Send all information to beadsocietynm@gmail.com
- Please send just one topic per email and be sure to include the topic in the subject line and indicate that the topic is for publication.
- Do not send articles or information as a response to another email; send a new, separate email.
- Be sure that any artwork, etc., you send is copy-ready in a format that can easily be downloaded and copied – preferably as an attachment (JPG, TIF, or PNG, or incorporated into a Word document).
- Please send complete information. The members of the Communications Committee are not mind readers. ☺ Please provide full names of persons, full addresses and contact information, dates and times, etc.
- Information to be included in the Newsletter MUST be received no later than the 20th of the prior month. Information received after that date will be shared via social media and on the BSNM website, and used for the following month's publication if appropriate.

2022 Board of Directors

The Board of Directors meets on the second Tuesday of the month via Zoom or in person.

All members are welcome to attend.

President	Barbara Rosen
First Vice President - Special Events and Workshops	
Second Vice President – Programs	Pat Verrelle
Treasurer	Elizabeth (Liz) Reisinger
Secretary	Helen Yackel
Membership Chair	Deb Cole
Newsletter Editor	Jill Bartel
Volunteer Coordinator	
Member-at-Large	
Past President	
Webmaster	Amanda Archuleta
Social Media Manager	
Photographer	Julie Fear
Historian	
Meeting Coordinator	Elizabeth (Liz) Reisinger
Membership Recruiter	
Fiber Arts Council Representative	
Fiber Arts Education Committee Representative	Elizabeth (Liz) Reisinger

Copyright © 2022 Bead Society of New Mexico. All rights reserved.

Address: Bead Society of New Mexico, P.O. Box 91655, Albuquerque, New Mexico 87199

Website: www.beadsocietynm.org

Facebook: <https://www.facebook.com/BeadSocietyNM/>

Contact email: beadsocietynm@gmail.com

You are receiving this newsletter because you opted in at beadsocietynm.org.