



# BSNM Newsletter

November 2022

The mission of this newsletter is to inform our members of the activities, events, and classes in the local beading community and to provide a forum where members can share beading knowledge and techniques.

## In This Issue

Message from the President  
Upcoming Events  
BSNM Donating Beads  
New Member  
November Raffle Basket  
Library Exhibit  
Renew Your Membership  
Raffle Basket Winner  
BSNM Election Results  
Jewelry Challenge Winners  
Flea Market Recap  
Support Our Local Businesses  
Beading Groups  
Gem of the Month  
Using Buttons in Jewelry  
Beaded Square Project  
Rio Rancho Bead Estate  
Studio Space Available  
Fiber Arts Council  
Keep in Your Thoughts  
BSNM Financials Available on Website  
2022 BSNM Calendar  
Art Exhibits and Craft Shows  
Classes at The Beaded Iris  
Business Member Ads  
Procedure for Submitting for Publication  
2022 Board of Directors

This newsletter welcomes new ideas from members and solicits articles and items of interest. Any special events taking place in your life (birthdays, anniversaries, condolences needed, new job, moving, births, weddings, awards, trips, transitions, etc.)?

All manuscripts are subject to editing. The editor does not assume responsibility for the accuracy of information contained in the articles received.

Please send all contributions for the newsletter to the editor in care of the Bead Society of New Mexico.

## From the President

Greetings Artists,

I'd like to thank the members who came to the October meeting for the Bead Society elections. Current members of the Board of Directors were unanimously re-elected. Laurye Tanner has become the Member-At-Large who is responsible for representing the suggestions and concerns of the general membership to the Board. Claudette Jaramillo has become the meeting coordinator. Claudette's duties include setting up the room for meetings and making arrangements for refreshments.

Good news! The Placitas Flea Market was a success. Even though it was cold and rainy, we were able to raise over \$500. Thank you to the volunteers that made it a fun and profitable day.

Also, the very large bead donation, from Juanita Finger, is being priced and readied to be sold to you. (Thank you to the ladies who are involved in this effort.) Beginning next year, there will be a selection of beads at each meeting that you can purchase. There are a lot of seed beads of all sizes, crystals, findings, and more. These have been priced much lower than wholesale. You can pay by cash, check, or credit card.

The general membership meeting in November will be devoted to making jewelry for Operation Christmas Child. The jewelry we make will be added to shoe boxes filled with personal hygiene items, toys, clothing, etc., for young girls and teens in disadvantaged situations, worldwide. Bring your tools, stringing material, findings, and beads. BSNM will furnish some supplies (beads and findings), as well as refreshments! Mrs. Sharon Cook, a representative for Operation Christmas Child will be our speaker. They have been so appreciative of our efforts in the past and I know we will not disappoint this year.

Remember, there is no meeting in December except for the Board meeting.

I wish all of you a very happy holiday season. I hope it's filled with family, friends, fun, and food! See you in 2023.

Barbara Rosen, BSNM President, 301-351-3303,

[beadsocietynm@gmail.com](mailto:beadsocietynm@gmail.com), [www.beadsocietynm.org](http://www.beadsocietynm.org),  
[www.facebook.com/BeadSocietyNM/](https://www.facebook.com/BeadSocietyNM/)



## Upcoming Events

<b>November 8</b>	<p style="text-align: center;"><b>Board Meeting</b></p> <p style="text-align: center;"><b>Tuesday, November 8, 2022 11:30 am to 1:30 pm</b></p> <p>The Board will meet to conduct the business of the bead society. Board members, old and new, please plan to attend.</p>
<b>November 15</b>	<p style="text-align: center;"><b>General Meeting</b></p> <p style="text-align: center;"><b>Tuesday, November 15, 2022 6:00 pm to 8:00 pm</b>  <b>(set-up, social time, and buying raffle tickets beginning at 5:30 pm)</b>  <b>Heights Cumberland Presbyterian Church, 8600 Academy Rd. NE</b></p> <p>Beading together is always enjoyable, and that is what we will do at our November meeting when we make jewelry (necklaces, bracelets, and earrings) for Operation Christmas Child. The jewelry will be included in shoeboxes that go to young girls and teens in disadvantaged situations, worldwide. Mrs. Sharon Cook, the local coordinator for Operation Christmas Child, will give a presentation.</p> <p><b>What to bring:</b> beads, stringing material, and findings to make necklaces, bracelets, and/or earrings, as well as any tools you need.</p> <p>BSNM will provide some beads and findings.</p> <p>Masks are optional. We must wipe down the tables and <u>must</u> be out of the room by 8:30 pm.</p>
<b>December 13</b>	<p style="text-align: center;"><b>Board Meeting</b></p> <p style="text-align: center;"><b>Tuesday, December 13, 2022 11:30 am to 1:30 pm</b></p> <p>The Board will meet to conduct the business of the bead society. Board members, old and new, please plan to attend.</p>
<b>December</b>	<p style="text-align: center;"><b>General Meeting</b></p> <p style="text-align: center;"><b>There is no general meeting in December due to the holidays.</b></p> <p>The Bead Society of New Mexico wishes all its members and their families a happy and safe Holiday Season and a wonderful New Year. See you all in January!</p>



Amy Bracher and Susan Hager are in the Halloween spirit at the October meeting.  
(Thanks to all who brought treats to the meeting.)

## BSNM Donating Beads to Special Needs

At the State Fair this year, Pat Verrelle met Jonas Lieb, the Assistant Program Director for Providence Support Service. Providence provides services to seven special-needs group homes in Albuquerque. Their clients are some of the people who enter jewelry in the Disabled section of the Jewelry-Beadwork division at the State Fair.

BSNM is donating beads and findings to Providence to distribute to their clients – many of whom are interested in beading and making jewelry.

**If you would like to contribute, please bring your items to the November meeting. We are looking for glass and plastic beads with a good-sized hole (not smaller than a size 6 seed bead), stringing material, and base-metal findings.**

## Welcome New Member

Welcome to new member Mia Seitz, who met BSNM members at the Placitas flea market and was encouraged to join

## November Raffle Basket

Be sure to buy your raffle tickets (only available at the general meeting) for a chance to win the **Chocolate Latte raffle basket**. Dark brown and creamy tan beads suggest chocolate and coffee with cream. Get inspired to create your jewelry while enjoying a cup of coffee or your favorite hot beverage in your custom-designed mug (basket worth at least \$100).

This basket includes:

- Czech glass seed beads
- Vintage and contemporary Czech glass beads
- Czech glass pearls
- Chinese lampwork glass beads
- Artisan lampwork glass bead
- Peyote beaded bead
- Tagua nut beads
- Strand of tigereye chips
- Strand of tourmaline beads
- Mookite beads
- Bronzite beads
- Jasper beads
- Agate and jasper freeform cabochons
- Horn pendants (2)
- Metal beads
- Silk string material with attached needle
- Beaded necklace, bracelet, and earrings set
- Stone (jasper or marble) bowl
- Custom-designed, bead-themed coffee mug
- Custom-designed, bead-themed coasters
- Plastic organizer basket

(Portions of this raffle basket were donated by Jill Bartel, Fran Hahn, Deb Novak, Mary K Phillips, Barbara Rosen, and Pam Troutman.)

## Library Exhibit: Oops!

There was a communication error about the exhibit at the Cherry Hills Library. They want our exhibit for the month of May in 2023 (not December 2022). Not necessarily a bad thing – gives us more time to plan.

What kind of exhibit do you think the Bead Society should present? All jewelry? Jewelry and non-jewelry? Should we have a bead challenge to solicit items for the display? Please send the Board your thoughts and ideas at [beadsocietynm@gmail.com](mailto:beadsocietynm@gmail.com)

We are also encouraged to present a class or workshop on beads and/or jewelry making. A bracelet-making class (stretchy or memory wire) has been suggested, with BSNM providing kits for the class. Any other suggestions? Would anyone like to conduct a class or a demo? Please let us know at [beadsocietynm@gmail.com](mailto:beadsocietynm@gmail.com)

(This is strictly an exhibit – no selling – similar to the displays we've had in years past in the library at the South Broadway Cultural Center.)

## Time to Renew Your Membership

Now is the time to renew your BSNM membership (\$35 for individual membership, \$45 for household membership, \$55 to \$200 for business membership). You can renew with a credit card on our website, <https://beadsocietyofnewmexico.wildapricot.org/> or by sending a check to Bead Society of New Mexico, P.O. Box 91655, Albuquerque, New Mexico 87199.

## Raffle Basket Winner

Pat Verrelle won the Golden Touch raffle basket at the October meeting. Pat, whose birthday was the day following the meeting, said it was a great birthday present.

## BSNM Election Results

Thank you to all the returning Board members who agreed to continue serving BSNM and welcome to our new Board members. All Board members officially begin their duties on January 1, 2023. However, new Board members are encouraged to attend the November 2022 and December 2022 Board meetings. The BSNM Board currently meets on the second Tuesday of each month from 11:30 am to 1:30 pm via Zoom or in person. However, we are flexible if that day and time needs to be shifted to accommodate the schedule of any new Board members.

The BSNM Board for 2023 is as follows:

**President:** Barbara Rosen

**1st Vice President-Classes and Special Events:** vacant

**2nd Vice President-Programs:** Pat Verrelle

**Treasurer:** Deb Cole

**Secretary:** Helen Yackel

**Membership Chair:** Barbara Rosen

**Membership Recruiter:** vacant

**Newsletter Editor:** Jill Bartel

**Volunteer Coordinator:** vacant

**Member-at-Large:** Laurye Tanner

**Webmaster:** Amanda Archuleta

**Social Media Manager:** vacant

**Meeting Coordinator:** Claudette Jaramillo and Mia Seitz

**Photographer:** Pam Troutman

**Historian:** vacant

**Fiber Arts Education Committee representative:** Liz Reisinger

We also need a **representative to the Albuquerque Fiber Arts Council**. This individual would attend the council meetings and report back to the BSNM Board.



## Orange and Black Jewelry Challenge Winners

photos by Pat Verrelle

Thank you to all the members who participated in our most recent bead challenge. It was great fun seeing everyone's interpretation of "orange and black."

At the October meeting, members voted on their favorite entry and prizes were awarded. Caroline Bleil won first prize (\$25) for her Halloween-themed bead embroidery necklace. (Lots of comments were made about the black cat cabochon she used.) Laurye Tanner won second prize (\$15) for her Cellini spiral necklace in orange, black, and purple.



Bead embroidery necklace with beaded neck chain by Caroline Bleil



Cellini spiral necklace by Laurye Tanner



Necklace featuring glass butterfly, carved stone leaves, bead embroidery, and stringing by Pam Troutman.



Sparkly beads (of course!) in black and orange are featured in this necklace by Pat Verrelle.



Crystals in black, orange, and yellow make up this necklace and earrings set by Deb Cole.



A fused glass pendant, seed beads, and cording are featured in this necklace and bracelet set by Twyla Caudill. She even brought a rabbit skin to display them on!



A dichroic fused glass pendant, onyx beads, and a variety of contemporary and vintage glass beads coordinate in this necklace by Jill Bartel.



Sue Mealy used her new Shrinky Dink skills to make this clever pumpkin and bat pendant on a cord.





## Flea Market Recap

photos by Barbara Rosen

Many thanks to our great volunteers (including Caroline Bleil, Twyla Caudill, Claudette Jaramillo, Barbara Rosen, and Pat Verrelle) for braving the cold and rain to sell beads and other donated items in the BSNM booth at the Placitas flea market. Business was brisk, despite the rain. **Pat says, "It was wet, but so much fun!"**



Some of the beads for sale at the BSNM booth.



Barbara Rosen helping a customer shop for beads.



Caroline Bleil and Twyla Caudill trying to stay warm and dry while helping out in the BSNM booth.



Everyone dressed warmly – but the rain hadn't started yet.



Claudette Jaramillo and Pat Verrelle having a good time selling beads.



Pam Troutman braved the cold and wet to buy beads!



## Support Our Local Businesses

**A Few of My Favorite Beads:** Call (505) 974-1645 or come by to see our latest beads.

**Baskets of Africa:** Whether you're looking for a new dash of color around the house, something to help you tote and carry, or just a clever way to organize your stuff – we have an abundance of baskets to choose from. Come see our great selection of beautiful artisan made, fair trade baskets. (505) 323-2315 or go to [info@basketsofafrica.com](mailto:info@basketsofafrica.com).

**Beadweaver of Santa Fe:** We are still offering a 10% discount to BSNM members.

**The Beaded Iris: Check out our new classes by Nan Card.** We offer 10% discount to BSNM members, as well as our punch cards for future savings. Come on into the store and rediscover all the beads, crystals, delicas, findings, thread, and other products you need to complete your beautiful project. **Open beading on Wednesdays.** Store hours are Mon. through Thurs. 10am to 5pm; Fri. through Sat. 10am to 4pm. Sun. closed. Phone: 505-299-1856; email: [beadedirisstore@aol.com](mailto:beadedirisstore@aol.com).

**Glorianna's Beads (Santa Fe):** 70 West Marcy Street, Suite B. Phone: (505) 982-0353. Open Tues-Wed and Fri-Sun 10:30am to 4pm.

**Mama's Minerals:** Bead Society members get 15% off on regular-priced merchandise. You can buy beads in bulk every day for up to 25% off. Larger discounts up to 30% off our newly restocked clearance beads. Mama's Minerals proudly supports local artists. [www.MamasMinerals.com](http://www.MamasMinerals.com).

**Meltdown Studio:** Check out our **new and returning classes** [Gemstone Statement Hoops, Intro to Lapidary, Christmas Cactus (Southwestern Style) pendant] at <https://www.meltdownstudio.com/group-classes-1>.

**New Mexico Bead Company:** New Mexico Bead Company is located at 4111 Louisiana NE, Albuquerque (north of Montgomery). (505) 243-2600. Website: <https://www.nmbead.com/>. Stone, glass, shell, and wood beads; fetishes; pendants; metal beads and findings.

**Santa Fe Jewelers Supply:** Open 9:00am to 5:00pm. Curbside pickup, mail order, or visit our showroom today! Order on our website at [www.sfjs.net](http://www.sfjs.net) day or night. Phone: 505-988-9157.

**Stone Mountain Bead Gallery:** We're open Mon. through Sat. from 11am to 6pm; Sun. 12:30pm to 4:30pm. Call 505-385-2200 to arrange contactless pickup. **30% off for BSNM members.** Back issues of *Bead&Button* magazine are 50% off.

**Thomason Stone Supply:** Store hours are Mon. through Sat. 9am to 5pm. You can place an order by calling us at 888-353-9934 or 505-268-9934, or by filling out a contact form on our website, <https://www.thomasonstonesupply.com/>.

**Thunderbird Supply Company:** See our website (<https://www.thunderbirdsupply.com/>) for online and in-store specials. Store hours: Mon.-Fri. 9am-6pm; Sat. 10am-5pm.

**Treasures of the Gypsy/Gypsy Raven:** Treasures of the Gypsy Show Room is open by appointment, as well as for classes. Please contact Pamela Armas to schedule your appointment at 505-847-0963, or email her at [gypsytreasures@cs.com](mailto:gypsytreasures@cs.com)

## Beading Groups

**Bosque Farms:** Do you live in the Bosque Farms area? Join BSNM member Kathy Jost at the Bosque Farms Community Center for the **BFCC Bead Group on the 2nd and 4th Thursday of the month from 2:00 pm to 5:00 pm.** Bosque Farms Community Center is located at 950 N Bosque Loop in Bosque Farms, New Mexico. Phone: (505) 869-5133.

**Placitas:** Several members of BSNM meet **each Thursday from 12:30 pm to 3:30 pm at the Placitas Senior/Community Center** at 41 Camino de la Huertas in Placitas, New Mexico. Come early and have lunch with some of us!

## Bead-Related Quotes

"Not on one strand are all life's jewels strung."

— William Morris

Better a diamond with a flaw than a pebble without.

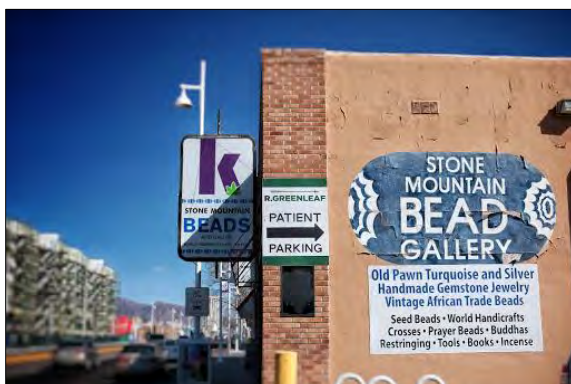
— Chinese Proverb

"Life is short, be sparkly!"

— Margot Potter

"Jewelry takes people's minds off your wrinkles."

— Sonja Henie



## Gem of the Month – Citrine

The name citrine comes from an old French word, “citron,” meaning lemon. This gemstone ranges in color from the palest yellow to a dark amber called “Madeira” because of its resemblance to the red wine. The finest citrine color is a saturated yellow to reddish orange free of brownish tints.

Although the darker, more orange colors of citrine have generally been the most valued color, in modern times many people prefer the bright, lemony shades which mix better with pastel colors. Citrine is one of the most affordable gemstones, thanks to the durability and availability of this golden quartz. Golden citrine is often mistaken for yellow or golden topaz, but topaz is more expensive.

Natural citrine is rare. Most of the citrine that is available on the market today is heat-treated amethyst. Natural citrine is pale yellow to pale orange (from traces of iron), much lighter than the heat-treated material, which is dark orange-brown to reddish-brown. All of the heat-treated material has a red tint, while natural citrine does not. The amethyst's original hue can determine the richness of the resulting citrine's yellow color.



Tumbled and faceted citrine



There is little mention of citrine used as a gemstone prior to the first century B.C. The Romans were thought to be the first to wear citrine, crafting it into rounded cabochons set into jewelry, often rings. Citrine became more popular during the Romantic Period, when artisans often favored these warm-colored gems to enhance gold jewelry.



This ornate Victorian citrine brooch is thought to be from the 1860s. (Robert Weldon, courtesy Linda Zorozek)

Today citrine is available in all types of jewelry (pendants, earrings, rings, etc.) – attractive to wear because of the soft golden luster.

Sister stone to the purple quartz known as amethyst, citrine crystals are found in igneous, metamorphic, and sedimentary rocks. It is believed that some citrine may have actually begun as amethyst, but heat from nearby molten rock changed it to the yellow form of quartz. Citrine crystals can form together with amethyst or smoky quartz to form a bi-colored quartz called ametrine. Citrine is known to change color when subjected to heat and is routinely heated in the jewelry-making process to intensify its color. Citrine permanently changes color if left in the sunlight for several hours, hence citrine jewelry should be kept away from prolonged exposure to strong light or heat.

People once carried citrine as a protective talisman against the plague, bad skin, and evil thoughts. Citrine, like all forms of quartz, was believed to have magical powers and was worn as a talisman against evil thoughts and snake venom. It was also considered to have medicinal properties and was commonly used as a remedy for urinary and kidney ailments.

A gift of citrine is symbolic for hope and strength. With its sunny brightness, this gemstone is ideal for helping anyone to get through the tough times in life! Citrine is believed to help the heart, kidney, digestive tract, liver and muscles. It promotes creativity and inspiration, helps personal clarity, and eliminates self-destructive tendencies. Citrine also symbolizes light-heartedness, joy, and happiness. Citrine is a great protective talisman with its ability to calm and soothe. **This stone also energizes the mind, stimulating one's thoughts.**

In chakra layouts, citrine is associated with the solar plexus. In healing, citrine is used to bring the energy field, or aura, of the person into alignment with the physical. Stress and traumatic events can cause depletion, and the energizing qualities of citrine help restore balance. Citrine is said to help with digestive problems, skin issues, and water retention. This stone is also said to encourage assertiveness, build confidence, ease jealousy, and improve self-esteem.

The sparkling beauty of the crystal also attracts abundance, so place it in the home to encourage a better flow of material energy.

Citrine is found in Brazil, Madagascar, Spain, Canada, France, USA (California, Colorado, North Carolina, Georgia, and Nevada), Russia, and Zambia. Brazil is the main source of citrine.

Citrine was adopted as the official birthstone for the month of November by the American National Association of Jewelers in 1912. It is also one of the gemstones for the zodiac sign of Virgo (August 23 through September 22). Citrine is the accepted gem for the 13th wedding anniversary.



## But Have You Used Buttons Like This Before? Using Buttons in Jewelry

by Tammy Honaman, October 14, 2022

[https://www.interweave.com/article/jewelry/creative-ways-use-buttons-in-jewelry/?utm\\_campaign=Interweave%20Jewelry%20%20Newsletters&utm\\_medium=email&utm\\_content=230085758&utm\\_source=hs\\_email](https://www.interweave.com/article/jewelry/creative-ways-use-buttons-in-jewelry/?utm_campaign=Interweave%20Jewelry%20%20Newsletters&utm_medium=email&utm_content=230085758&utm_source=hs_email)

Buttons are a very common, everyday item but in the hands of a maker, they can be so much more than a simple fastener. When made BY a maker, buttons have even greater potential and greater appeal (in my opinion). To follow are a few different ways makers have used buttons in jewelry which might have you seeing buttons in a whole new light.

### Buttons as Beads

Sharilyn Miller uses waxed linen and a simple knot to add buttons to a wire bracelet, elevating the look of the design. Beads cap off the tails of the thread, unifying the vintage-button embellishment with the rest of the design.



A simple stitch connects buttons to a bracelet, adding whimsy and flare. Victorian Cuff by Sharilyn Miller, *Step by Step Wire*, February/March 2013

### Buttons as Earrings

Denise Peck adds buttons to a length of wire for a quick and easy pair of earrings. Imagine all the gifts you can make with this one design. If you sell your work at in-person shows, this would be a great way to create personalized jewelry. Let your customer pick out their favorite buttons then send them away with a finished pair in no time.



Button earrings by Denise Peck, *Step by Step Wire*, 2010

### Buttons as Clasps

A shank button is used as a clasp in this beaded bracelet. The button was incorporated seamlessly into the beadwork by passing the thread through the shank, the beadwork, and the shank again. This type of thread path hides the thread in the beadwork, limiting exposure and wear and tear. For complete instructions read: [How to Make a Right-Angle Weave Seed Bead Bracelet with Ice Resin and Image Transfer Button Clasp](#).



The button clasps in this beaded design were created from a button base, image transfer, inclusions, and resin.

### Buttons as Focals

As Kinga Nichols shows in her designs, buttons make a great focal in bead embroidery designs. If you find a favorite button to feature in a similar type of design and the button has a shank, carefully use cutters to remove. [TIP: When cutting the shank away, cover the material to prevent the pieces from flying away. File the cut ends so they are smooth and the surface as flat as possible.]



Let your collection of buttons and other components draw you in as you seek to create a harmonious beaded piece with layers of dimensionality.

If you have a unique button you covet, consider using a two-part silicone mold material to capture the shape of the button, then use clay (try metal clay!) to recreate the button in a new form. This will allow you to save your favorite but also make something special with the replica.

In a Q&A with Alice Sprintzen, she shares where she finds the found objects used in her designs. "There is no scarcity of materials for the found-object jeweler. My eyes are automatically drawn to the tossed-away and mostly overlooked. Find treasures easily at garage sales, flea markets, antique stores. I have a scout team of friends who augment my supply. They delight in seeing one of their finds in a completed work." For more from the interview, read "[Upcycled Jewelry: Alice Sprintzen Shares her Style, Design Aesthetic, and How-To](#)."

## Beaded Square Project

<https://www.museumofbeadwork.org/pages/beaded-square-project>

The Beaded Square Project is a collaborative community project where each participant created a 6-inch-by-6-inch square of beadwork. These individual squares were mailed to the Museum of Beadwork to build a bead-based "quilt." The project highlights the shared experiences of isolation, quarantine, and the many societal changes that occurred during 2020.

The idea originated from artist Nancy Josephson and a group of her alumnae students and grew out of a desire to commune on a joint project while safely sheltering. It visualizes the individual and communal experience of artists around the globe during this distinct moment in history.

The deadline for submissions was March 19th, 2021, marking 1 year in lockdown. During this time the Museum received a total of 541 individual squares from 18 countries worldwide. The squares represent a vast range of technique, ability, subject matter, background story, and emotional response.

The diversity of our participants encompasses various ethnicities and religions, all genders, and a wide range of ages with our youngest recorded artist being 11 and our oldest being 95. There was also an online community of over 1,200 people communicating and supporting each other, not just in reference to their artwork, but also in making it through lockdown in the various forms that took in different places throughout the globe.

### So, what's next for the project?

The squares are being housed at the Museum where we are beginning the process of accessioning, photography, curation, and final construction of the exhibit that will be on view once we are open to the public in 2022.

In July 2021, we received a grant for \$10,000 to go towards materials for building the exhibit. While these grant funds will certainly get the exhibit started, we need funds for outfitting and installing an electrical system, signage, an interactive media component, and costs of labor. Please consider making a tax-deductible towards this incredible project.

### Beaded Square Project Database

All 541 squares will be included in the final installation at the Museum of Beadwork once we are open. Photos of the squares are available on our webpage (<https://www.museumofbeadwork.org/pages/beaded-square-project>): click on a square for its number, artist's name, title, and short description. Following are images of a few of the squares, including ones by BSNM's own Pam Troutman and Maggie Morawietz.



**by Pam Troutman, Rio Rancho NM.** "My submission expresses the joy in nature that many people experienced when they stepped outside their normal daily routines to have to find something to do when they could not go to work, shopping, and other indoor activities."



**by Maggie Morawietz, Albuquerque NM.** *Towards the Sun.* "In my creative work I like to combine different techniques - here bead embroidery joins a chased copper flower."



by Monica Posnick (Monica The Great), Chanhassen MN, *Bee Tile.* "I did a bee tile because I'm a beekeeper"





by Sandra Charlap, Orange NJ, **SMILE**. "Mother always told me-- ' smile and it will be better', so I smiled and I'm still waiting."



by Sherry Serafini, Sligo PA. "Sometimes reality is too complex. Art takes us away to another realm and brings us an unexplained peace."



Vasyl And Olena Nemyrovski, Ukraine. "Our work is dedicated to the tragic events of the COVID-19 pandemic, which took hundreds of thousands of lives around the world."

In the center of the composition, there are three lit candles in memory of the event, and the figure of Virgin Mary, who prays for the salvation of our souls, as well as three doves - symbol for lives lost to COVID.



by Eva Louise Witt, Falmouth ME. "A portrait of my family stuck at home. Winter 2020 - 2021."



by Melanie Christie, San Jose CA, **Mourning Flower**. "I made this piece in memory of my mother-in-law, Mary D. Christie, who died from COVID-19 on May 4th, 2020. As a part of the larger project, it will stand as a memorial for all of the victims of this pandemic."



## Rio Rancho Bead Estate

Jerome Nunez, of A Few of My Favorite Beads, knows of a bead estate in Rio Rancho with beads for sale at a discount. There are some stipulations to buying:

- You must call Jerome and make an appointment to go to the bead estate (it is not at his shop)
- The bead estate is only available on Tuesdays
- Limit of 3 people at a time
- Jerome will drive you to the bead estate

To make an appointment or if you have any questions, call 505-974-1645.

## Studio Space Available

Business partners Sally Jewell and Sally Williams have opened a 1,700-square-foot studio in the Hoffmantown Shopping Center at Menaul and Wyoming for all fiber arts crafts. They offer guilds, groups, or individuals a meeting space, a gathering work space, or an opportunity to use the space to teach classes.

The partners are both mothers and work full time, so the space is currently open Fridays and Saturdays, but will open and host any group when requested.

The Sewing Place Abq  
8252 Menaul Blvd. NE, Albuquerque, NM 87110  
[thesewingplaceabq@gmail.com](mailto:thesewingplaceabq@gmail.com), 505-705-2952  
[www.thesewingplaceabq.com](http://www.thesewingplaceabq.com)

## Fiber Arts Council

The Albuquerque Fiber Arts Council is looking for candidates who are interested in promoting fiber arts in New Mexico to fill board positions. If interested, please go to <https://abqfiberartscouncil.org/fiber-arts-council/> to fill out an application. (This is different than being BSNM's representative to the Council.)

The Albuquerque Fiber Arts Council was formed in 1997 to provide the opportunity for local fiber guild members to show their work to the public. It has grown from six guilds then to almost twenty. The Board of Directors has seven members who are dedicated to continuing the tradition of hosting the Albuquerque Fiber Arts Fiesta every other year. As a 501(c)3 organization, the proceeds from the Fiesta provide funding for other public shows and scholarships.

The Council is also seeking individuals interested in working on the marketing committee. If you would like to be involved and work with a great team promoting Fiber art, please email [michellejackson@quiltfashions.com](mailto:michellejackson@quiltfashions.com)

## Bead Store for Sale

After 30 years in retail and 50 years in jewelry, imports, and wholesale, **Robert Steinberg, owner of Stone Mountain Bead Gallery (voted Albuquerque's Best Bead Store), is selling off his huge accumulation beads, jewelry, and world handicrafts.**

Included are thousands of strands of vintage Czech beads; African trade beads; gemstone and mineral beads; Native American turquoise and heishi; and more. Also loads of silver and gemstone jewelry; Bali silver beads; wood, ceramic, glass, brass, and stone beads; Swarovski crystals; costume jewelry; seed beads by the pound; and handicrafts, art, and jewelry from Nepal, India, Tibet, Thailand, Bali, and Turkey. Collectables and statues – oriental, Native American, dragons, skulls, Buddhas, malas, and rosaries.

Quantity discounts!

Also, building for sale: retail space on Route 66/ Central Ave. in popular Nob Hill neighborhood. 5,000 square feet currently divided into two stores. Signage and huge parking lot.

Contact: Robert Steinberg  
Stone Mountain Bead Gallery  
4008 Central Ave. SE, Albuquerque, NM 87108  
Phone: 505-260-1121  
Email: [rsteinberg50@comcast.net](mailto:rsteinberg50@comcast.net)

## Fundraiser for Barbara Butcher

Barbara Butcher, who has been battling cancer, had a stroke earlier this year that left her with limited use of her right arm and leg. Consequently, she will probably need 24-hour assistance going forward.

To help combat this expense, Jerome Nunez of A Few of My Favorite Beads has volunteered to sell the leftover stock from Barbara's former store, The Beading Heart of Santa Fe. **Sales are cash only. All monies will go to Barbara for her medical expenses.**

**You must make an appointment to purchase these beads. Please call Jerome at (505) 974-1645.**

Jerome says he can accommodate appointments 7 days a week, beginning at about 11am, but says that Wednesdays are probably the best days.

**All items are upstairs at Jerome's store (up a spiral staircase).** If you are unable (or unwilling) to climb the stairs, Jerome said he is willing to bring boxes down to you – if you have an idea of what you are looking for.

**Put Fiber Arts Fiesta 2024 on your calendar for April 11-13, 2024!**  
**It will be here before you know it!**



## Keep in Your Thoughts

Leah Ready, whose husband recently passed away  
 Pam Troutman, whose mother recently passed away  
 Bobbie Yoakum, whose mother recently entered hospice  
 The family of Paula Adams, who recently passed away  
 Amanda Archuleta, who recently had surgery

If you would like to send a card or note of encouragement to any of these members, please address the envelope to them **in care of the Bead Society of New Mexico, P.O. Box 91655, Albuquerque, New Mexico 87199**, and we will ensure that they get your messages.

## Happy Birthday

Anita Collins – November 2

Sandy Johnson – November 3

Mary Ann Cordova – November 7

Fran Hahn – November 19

Nan Card – November 20

Kelly Buttermann – November 25

Jan McComas

If your birthday isn't listed here, please let us know at [beadsocietynm@gmail.com](mailto:beadsocietynm@gmail.com) so we can wish you a Happy Birthday!

## Get More Information on the BSNM Website

■ **Classes:** For classes taught by our business members and other non-BSNM-sponsored classes, go to <https://beadsocietyofnewmexico.wildapricot.org/Bead-Time> for dates, times, and descriptions.

To review class details and to register online, log in to the BSNM website with your email and password and go to the event page

<https://beadsocietyofnewmexico.wildapricot.org/Meetings-Classes-and-Events>.

■ **Craft Shows and Other Events:** To see upcoming shows that our members are involved in, go to the Members Art Shows listing at <https://beadsocietyofnewmexico.wildapricot.org/Art-Shows>. Also, if you have an art show you are participating in, don't forget to send Teresa Kenyon (at [beadsocietynm@gmail.com](mailto:beadsocietynm@gmail.com)) the information and event link so we can include your event.

## BSNM Financials Available on Website

The monthly and annual financial reports for the Bead Society of New Mexico are now available in the "Members Only" section of the BSNM website (you must have/create an account on the website to access these documents). Go to [www.beadsocietynm.org](http://www.beadsocietynm.org) and log in to the website (click on "Log In" in the far upper right corner of the homepage; you need to register first if you haven't done so before). Hover over the "Members Only" section on the right end of the categories bar with your mouse and click on "Financials" in the drop-down menu. Then click on the document you want to read. (You may need to temporarily disable your pop-up blocker since the documents may open in a new window or tab).

## 2022 BSNM Calendar


The following is the calendar for BSNM meetings and events for 2022. **Beginning June 2022, our Board meetings changed to the 2nd Tuesday at 11:30am.** Dates and events are subject to change. Bead Times have been cancelled until further notice.

General meeting, 3rd Tues., 6:00pm	Board meeting, 2nd Tues., 11:30am	Classes	Special events
Jan. 18	Jan. 12		Annual gala
Feb. 15	Feb. 9	Flowing River bracelet	Annual bead swap
March 15	March 9	Sweetheart necklace	Make doo-dahs for Fiber Arts
April 19	April 12	Wire weaving	Fiber Arts Fiesta
May 17	May 11	Paper beads	Mama's Minerals
June 21	June 7	Lariat necklace	
July – no meeting	July 12		Field trip
August 16	August 9		
Sept. 20	Sept. 13		State Fair
Oct. 18	Oct. 11		Flea market, Elections
Nov. 15	Nov. 8		
Dec. – no meeting	Dec. 13		

## Whole Bead Show

March 24-26, 2023

Santa Fe Community Convention Center  
 Santa Fe, New Mexico




# Asbury Christmas Bazaar

**Saturday, November 5, 2022**  
**9:00 AM - 3:00 PM**

**Asbury United Methodist Church**  
10,000 Candelaria Road NE

*Over 65 crafters*  
*Bake Sale • Homemade Pies*  
*Breakfast & Lunch Burritos*

**39th Year!**



**Jill Bartel has a booth at this craft show.**

## Placitas Holiday Market

**Saturday-Sunday, November 19-20, 2022**

**10am - 5pm both days**

**Free Admission**

**Follow the RED signs to the candy canes marking the market sites.**

You will find art, crafts, food, and drink, as well as benefit the good works of local community groups and charities.

Maps will be available at all venue sites and online. For more information and the downloadable map, go to <https://www.placitasholidaymarket.com/>

### **Participating Sites:**

**Site #1 – Wild Hearts Gallery**, Homestead Village Shopping Center, 220-B NM 165

**Site #2 – Placitas Community Library**, 453 NM 165


**Site #3 – Placitas Winery**, 26 Camino de los Pueblitos

**Site #4 – Historic Las Placitas Presbyterian Church**, 7 Paseo de San Antonio

**Site #5 – Historic San Antonio Mission**, 43 Paseo San Antonio

**Site #6 – Placitas Community Senior Center**, 41 Camino de Las Huertas

**Julie Fear has a booth at this event.**




## Heights First Church of the Nazarene

Craft Show! Fundraiser

8401 Paseo Del Norte NE, Alb. NM 87122

Date: November 19th, 2022

Time: 9:00 am to 4:00 pm



**Jill Bartel has a booth at this craft show.**

## New Mexico Arts & Crafts Festival

**Saturday, November 19, 2022**

**10am-4pm**

**UNM Continuing Education**  
**1634 University Blvd. NE**

**Free Admission**

Looking for a fun holiday experience and the opportunity to purchase unique and meaningful gifts this holiday season? Come shop for unique, locally handmade gifts from New Mexico artists and vendors!

Supporting our local creatives and dedicated small businesses not only directly contributes to our community by keeping money in the New Mexico economy, but it also creates a more personalized gift giving experience this holiday season.

Local vendors, craft workshops, live performances, and food trucks

For more information, go to <http://ce.unm.edu/arts-festival/>



## What's Blooming at the Beaded Iris



### Beading with Nan Card



#### Flat Spiral

Date: Saturday, October 15  
Time: 10:00 to 1:00  
Cost: \$10.00 (see supply list)  
Nan Card



#### African Helix

Date: Saturday, October 22  
Time: 10:00 to 1:00  
Cost: \$10.00 (see supply list)  
Nan Card



#### Cellini Spiral

Date: Saturday, November 12  
Time: 10:00 to 1:00  
Cost: \$10.00 (see supply list)  
Nan Card



#### Ruffled Links

Date: Saturday, November 12  
Time: 10:00 to 1:00  
Cost: \$10.00 (see supply list)  
Nan Card



A non-refundable payment of \$10.00 will be due at time of registration. Registration is required for ALL classes as Nan will need to know how many sets of instructions to print. Registration will also guarantee you a spot in class.

Thank you.



## Join the *Soft Flex* Community!

Live Design Challenges  
Tutorials  
BOGO Offers  
Giveaways  
Special Discount Offers  
Live Sales








Join the "Soft Flex Very Important Beading Studio" Group on Facebook for jewelry making inspiration!


 Subscribe to our YouTube Channel for video tutorials!

**[www.SoftFlexCompany.com](http://www.SoftFlexCompany.com)**

Toll Free Phone (866) 925-3539 • U.S. Phone (707) 938-3539 • Free Shipping on orders over \$65 in the USA

Use coupon code **BeadSociety10** to get 10% off! • DOES NOT APPLY WITH OTHER DISCOUNTS • LIMIT 4 USES PER CUSTOMER

SoftFlex loves to support bead societies, as they are the backbone to our beading community. We have a coupon code for BSNM members. Just enter the code **BeadSociety10** at checkout. Coupon gives 10% off of each item, but it does not apply on top of other discounts and there is a limit of 4 uses per customer. No expiration date.



### Your One Stop For the Holidays!

Drilled & Polished Stones & Fossils, Local  
 Artisan Jewelry, Rock Tumblers, Stone Lamps,  
 NatGeo Kits, MamaMade Christmas  
 Ornaments, Gift Certificates,  
 & MUCH MORE

505-266-8443  
[www.MamasMinerals.com](http://www.MamasMinerals.com)  
 New Website!



We specialize in providing care for clients who need companionship as well as for clients who need end of life care.

**Help For Your Loved One:**

- Medication reminders
- Cooking favorite meals
- Total personal care including bathing, dressing, and assisting with hygiene
- Changing bed linens and doing laundry
- Light housekeeping
- Assistance with transportation to doctor's appointments, errands, and shopping

9004 Menaul Blvd NE #11,  
 Albuquerque, NM 87112  
 505-798-0978

Owner: Elizabeth Sands (BSNM member)  
[eesands@msn.com](mailto:eesands@msn.com)



# dorje designs



Style, soul, and history . . .  
all in a single piece of adornment.

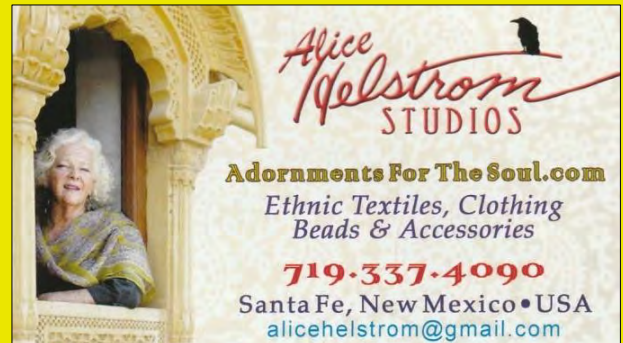
Anna Holland designs unique ethnic jewelry and tribal jewelry using contemporary, antique, and ancient beads and artifacts. Her handcrafted necklaces, bracelets, and rings are all one-of-a-kind treasures, collected and worn by women and men around the world.

<http://www.dorjedesigns.com/>  
[info@dorjedesigns.com](mailto:info@dorjedesigns.com)



15% discount for BSNM members

## Alice Helstrom Studios



10% discount for BSNM members

## Treasure of El Dorado

Lewis S. Toth, Owner and Designer

Handmade Southwestern style jewelry,  
beadwork with semi-precious gems, corals,  
shells, artistic metal, and glass beads  
from all over the world,  
and fetishes imported from Philippines.

Best material and workmanship guaranteed.

Offered to you at affordable prices  
for your enchantment

6508 Rancho Ladera Road NE  
Albuquerque, New Mexico 87113

Phone/Fax: (505) 821-4276

email: [lulutoth7@aol.com](mailto:lulutoth7@aol.com)

registered New Mexico small business  
since 1993

Jerome Nuñez  
Owner

**A FEW OF MY FAVORITE BEADS**  
Seed Beads • Delicas  
Swarovski Crystals & Pearls  
Fire Polish, Daggers & More

10137 Edith Blvd. NE  
Albuquerque, NM 87113

(505) 974-1645

No additional discount for BSNM members

Beads • Findings • Classes

*The Beaded Iris*

(505) 299-1856  
1512-F Wyoming Blvd. NE (N of I-40 at Constitution)  
Albuquerque, NM 87112  
www.thebeadediris.com

10% discount for BSNM members

**Baskets of Africa.com**  
info@basketsofafrica.com

1-505-323-2315 – Local  
1-800-504-4656 – Toll Free

Visit Our Showroom:  
Open 10-3 Mon-Fri

1714 Eubank Blvd NE  
Albuquerque, NM

FAIR TRADE  
FEDERATION  
MEMBER

15% discount for BSNM members

STONE MOUNTAIN  
BEAD GALLERY

Beads, Jewelry &  
Handicrafts of the World

Voted Albuquerque's Best Bead Shop!

Robert Steinberg - owner

4008 Central Ave SE  
Albuquerque, NM 87108 505-260-1121

Mon-Sat 11-6 Sun 12:30-4:30  
www.stonemountainbeads.com

30% discount for BSNM members

**Beads and Beyond by Betty**  
Designer  
Betty Smith  
bettygardens@gmail.com  
520-405-8142  
www.BeadsandBeyondbyBetty.com

*Cynthia A. Romero*

Tax Preparation & Planning  
Bookkeeping & Payroll Services

(505) 296-0521  
(505) 263-3646  
RomeroIII@msn.com

Member NATP

### Get Your BSNM Discount

To get your BSNM discount at our business members' stores, you must show your current membership card. They won't accept expired cards or membership renewal emails or a letter from your mom!

Don't lose out. Be sure you have your 2022 BSNM membership card and show it when you make a purchase.

Tim & Larry's  
**ELIXIR**  
BOUTIQUE  
CHOCOLATES

### Elixir Chocolates

6616 Gulton Ct. NE,  
Suite 60  
Albuquerque, NM 87109  
(off Osuna Road, west of  
Jefferson)  
Open Monday – Friday  
10:00 am – 3:00 pm  
Call ahead on weekends.  
505-933-5125



## Procedure for Submitting Articles for Publication

Producing a quality monthly publication as well as maintaining an up-to-date website and Facebook page is not an easy task. We have three people who work hard to ensure that our members have the most timely and accurate information possible. **But these tasks take lots of time and can't be done properly without the assistance of our members.** Please remember to follow these procedures when submitting information to be shared with the general membership:

- Send all information to [beadsocietynm@gmail.com](mailto:beadsocietynm@gmail.com)
- Please send just one topic per email and be sure to include the topic in the subject line and indicate that the topic is for publication.
- Do not send articles or information as a response to another email; send a new, separate email.
- Be sure that any artwork, etc., you send is copy-ready in a format that can easily be downloaded and copied – preferably as an attachment (JPG, TIF, or PNG, or incorporated into a Word document).
- Please send complete information. The members of the Communications Committee are not mind readers. ☺ Please provide full names of persons, full addresses and contact information, dates and times, etc.
- Information to be included in the Newsletter MUST be received no later than the 20th of the prior month. Information received after that date will be shared via social media and on the BSNM website, and used for the following month's publication if appropriate.

## 2022 Board of Directors

The Board of Directors meets on the second Tuesday of the month via Zoom or in person.

*All members are welcome to attend.*

President .....	Barbara Rosen
First Vice President - Special Events and Workshops.....	
Second Vice President – Programs.....	Pat Verrelle
Treasurer .....	Deb Cole
Secretary .....	Helen Yackel
Membership Chair .....	Deb Cole
Newsletter Editor .....	Jill Bartel
Volunteer Coordinator.....	
Member-at-Large .....	
Past President.....	
Webmaster.....	Amanda Archuleta
Social Media Manager .....	
Photographer.....	Julie Fear
Historian .....	
Meeting Coordinator .....	
Membership Recruiter.....	
Fiber Arts Council Representative .....	
Fiber Arts Education Committee Representative .....	Elizabeth (Liz) Reisinger

Copyright © 2022 Bead Society of New Mexico. All rights reserved.

Address: Bead Society of New Mexico, P.O. Box 91655, Albuquerque, New Mexico 87199

Website: [www.beadsocietynm.org](http://www.beadsocietynm.org)

Facebook: <https://www.facebook.com/BeadSocietyNM/>

Contact email: [beadsocietynm@gmail.com](mailto:beadsocietynm@gmail.com)

You are receiving this newsletter because you opted in at [beadsocietynm.org](http://beadsocietynm.org).